



Uninstaller Guide for EAM Solutions by Utopia

Release 1909

Document History

The following table provides an overview of the most important document changes and approvals.

Version	Date	Description	Name
1.0	03-10-2019	Initial version	Jyoti Prasad Das

Approval History

Version	Date	Description	Name
1.0	03-10-2019	Approved version	Lyle Snyder

Table of Contents

Introduction	4
Challenge	4
Solution	4
Key Points	4
Delete EAM Components	4

Introduction

This is a guide that needs to be followed for uninstalling UGI components for MDG EAM 1909 solution offered by Utopia.

Challenge

The add on uninstallation was not successful earlier because of dependent DDIC objects (such as Table, Structure) and entries respect to Utopia namespace that get generated post model activation.

Solution

The issue is addressed through a report created with customer namespace to remove entries and dependent objects before addon uninstallation.

Key Points

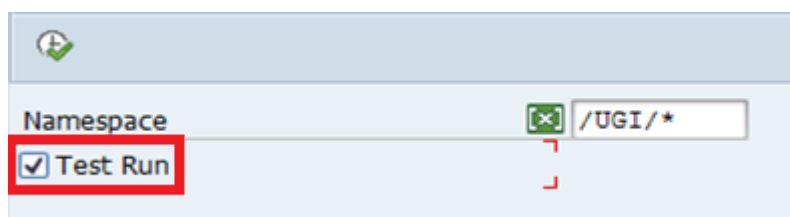
The following key points should be remembered:

1. The uninstallation should be carried out for component that is added last (following Last in First Out order).
2. This document is specific to uninstallation of UGI Release 1909.
3. Uninstallation process is not reversible, including the prerequisites steps mentioned in this report.
4. Customer should take a backup of the system prior to running the Uninstall.
5. Any prerequisite component dependent on UGI for example, Fiori (UGIOD01, UGIEAM01, UGI7, etc.) should be uninstalled via SAINT prior to uninstalling UGI.
6. Any Custom (Z objects) referencing UGI are customer-specific and needs to be handled exclusively by customer. Hence, they are not part of this report and document scope.

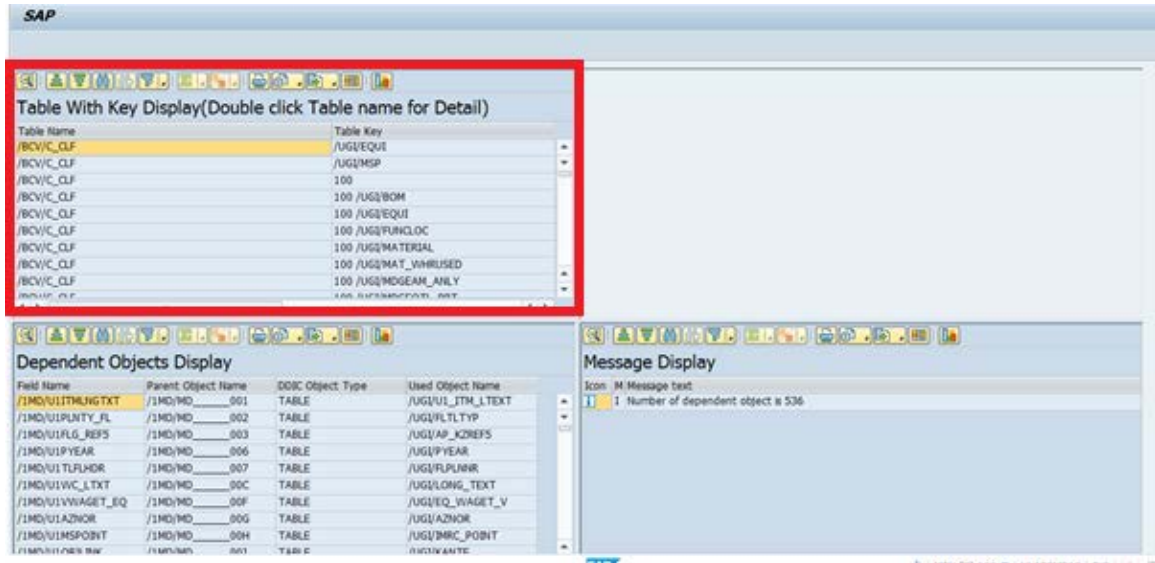
Delete EAM Components

Use the following steps for deleting EAM (UGI) components.

1. Before executing the manual steps to remove the component, apply the OSS Note [2843907](#).
2. Go to selection screen of Z report - Z_ADDON_CLEANUP_EAM_COMP
3. Select /UGI/* namespace using F4 and execute with Test Run to check if any dependent objects or entries are there.

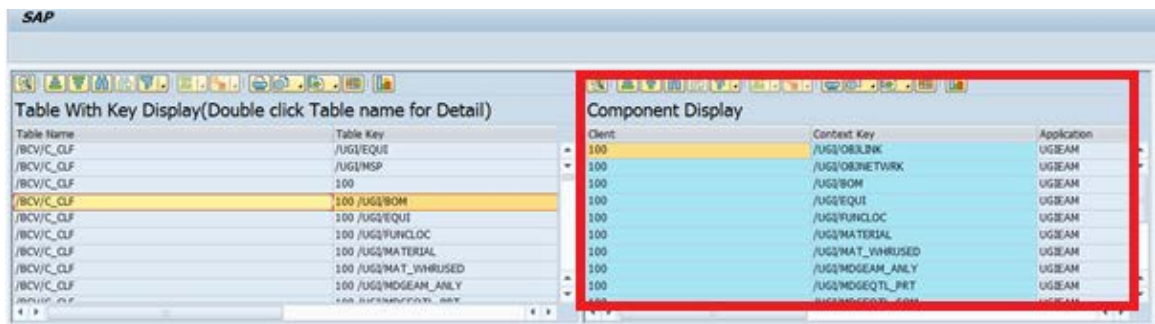


4. Review the entries shipped in the BC-Sets and objects with respect to UGI namespace. The tables, key values contained in the BC-Sets and dependent DDIC object names are displayed as in following screen.

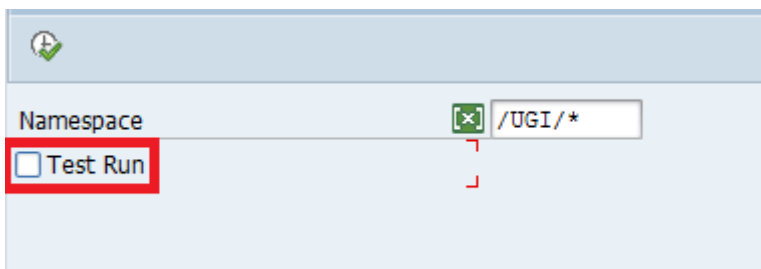


- Double-Click on the table name, detailed level records are displayed in the top right of the screen as displayed.

Note: This is an optional step used to review the entries for respective table.



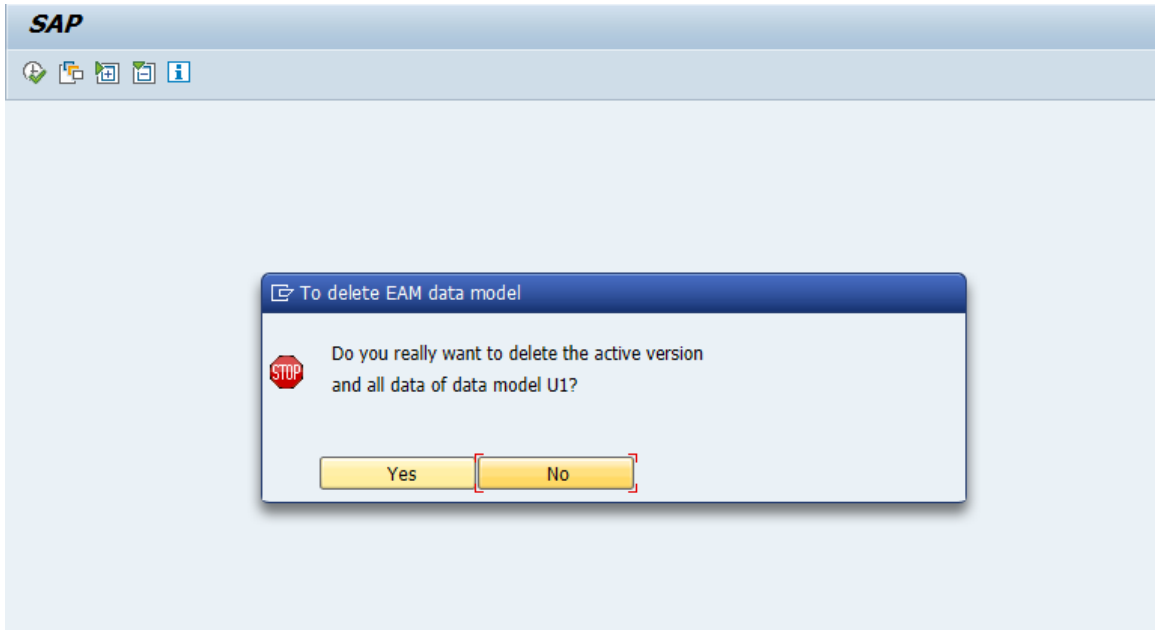
- Go back and Execute the report without test mode for manual object removal and record deletion.



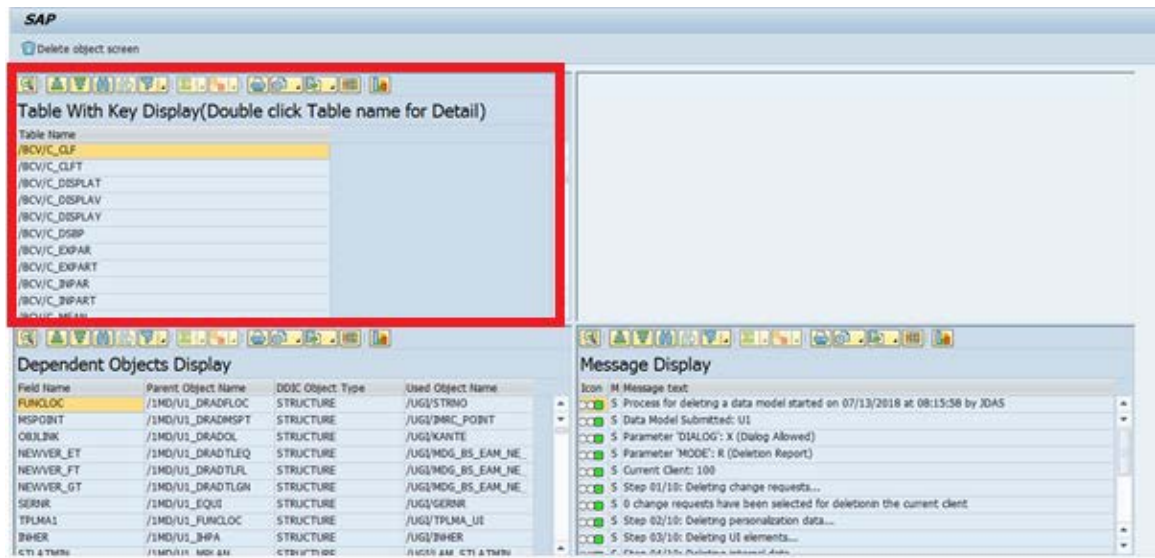
Pop up is displayed for user confirmation.

- Click Yes.

The following pop up appears to confirm Data model deletion.

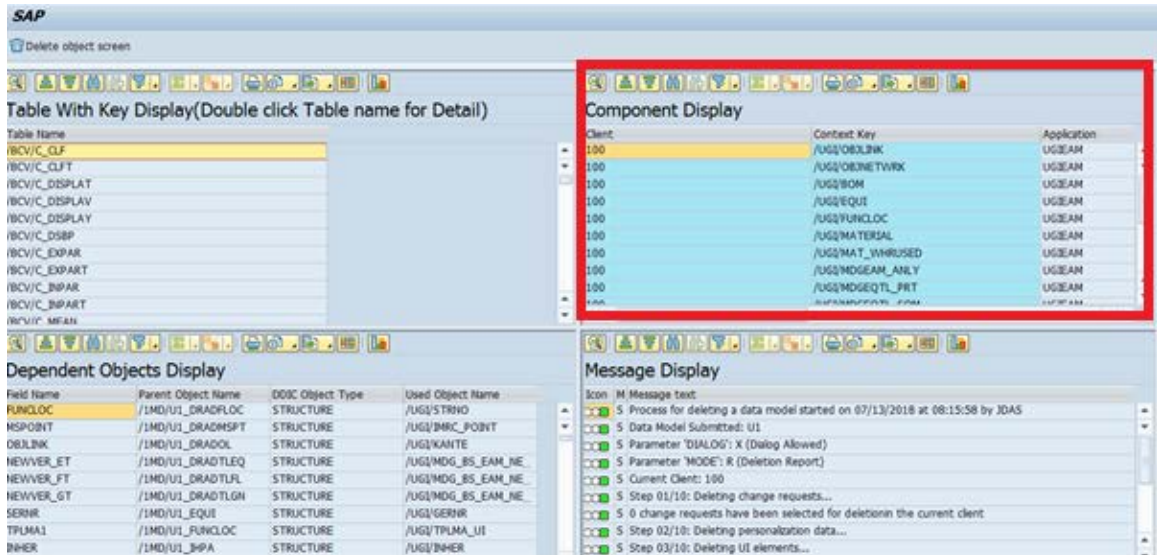


- Click “Yes” to delete the model and view the table names which have undergone deletion.

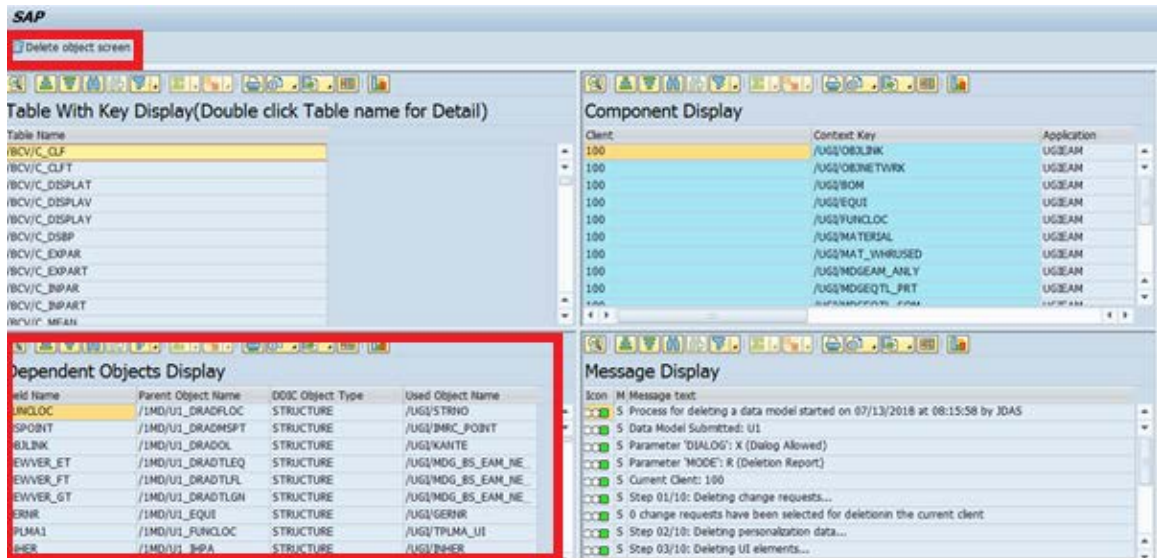


- Double-Click on the table name to view the deleted entries on top right container.

Note: This is a step to validate the entries that are removed from the table.



- Review the dependent objects and Select the Entries and click on the “Delete Object Screen” button at the top to delete objects manually.



- Select the relevant dependent objects causing conflict and click the “Delete Object” button at the top.

Delete Dependent Objects

Delete Object

Field Name	Parent Object Name	DDIC Object Type	Used Object Name
FUNCLC	/1MD/U1_DRADFLOC	STRUCTURE	/UGI/STRNO
MSPOINT	/1MD/U1_DRADMSP	STRUCTURE	/UGI/IMRC_POINT
OBJLINK	/1MD/U1_DRADOL	STRUCTURE	/UGI/KANTE
NEWVER_ET	/1MD/U1_DRADTLEQ	STRUCTURE	/UGI/MDG_BS_EAM_NEWEST...
NEWVER_FT	/1MD/U1_DRADTLFL	STRUCTURE	/UGI/MDG_BS_EAM_NEWEST...
NEWVER_GT	/1MD/U1_DRADTLGN	STRUCTURE	/UGI/MDG_BS_EAM_NEWEST...
SERNR	/1MD/U1_EQUI	STRUCTURE	/UGI/GERNR
TPLMA1	/1MD/U1_FUNCLC	STRUCTURE	/UGI/TPLMA_UI
INHER	/1MD/U1_IHPA	STRUCTURE	/UGI/INHER
STLATMIN	/1MD/U1_MPLAN	STRUCTURE	/UGI/LAM_STLATMIN
TPLNR_MS	/1MD/U1_MSPOINT	STRUCTURE	/UGI/TPLNR_GEN
OBJLINK	/1MD/U1_OBJLINK	STRUCTURE	/UGI/KANTE
STLATDEG	/1MD/U1_OBJNETWRK	STRUCTURE	/UGI/LAM_STLATDEG
ITMLNGTXT	/1MD/U1_PMBOMHDR	STRUCTURE	/UGI/U1_ITM_LTEXT
TL_LTXIND	/1MD/U1_TLEQHDR	STRUCTURE	/UGI/XFELD
TPLNR2FTH	/1MD/U1_TFLHDR	STRUCTURE	/UGI/TPLNR_GEN
TL_LTXIND	/1MD/U1_TLGNHDR	STRUCTURE	/UGI/XFELD
VGE02	/1MD/U1_WORKCNTR	STRUCTURE	/UGI/U1_WC_VGE02
/1MD/U1LONGTEXT	/SMD/MD____000V	TABLE	/UGI/LONGTXT
/1MD/U1LONGTEXTT	/SMD/MD____000W	TABLE	/UGI/LONGTXT
/1MD/U1LONGTXT	/SMD/MD____000X	TABLE	/UGI/LONGTXT
/1MD/U1LONG_TEXT	/SMD/MD____000Y	TABLE	/UGI/LONGTXT
/1MD/U1LONG_TXT	/SMD/MD____000Z	TABLE	/UGI/U1_OL_LTEXT
/1MD/U1LTX	/SMD/MD____0014	TABLE	/UGI/U1_MSP_LTEXT
/1MD/U1LTX_OL	/SMD/MD____0017	TABLE	/UGI/U1_OL_LTEXT
/1MD/U1MRMAXI	/SMD/MD____001A	TABLE	/UGI/MRMAXI
/1MD/U1MRMINI	/SMD/MD____001C	TABLE	/UGI/MRMINI

OBJLINK	/1MD/U1_OBJLINK	STRUCTURE	/UGI/KANTE
STLATDEG	/1MD/U1_OBJNETWRK	STRUCTURE	/UGI/LAM_STLATDEG
ITMLNGTXT	/1MD/U1_PMBOMHDR	STRUCTURE	/UGI/U1_ITM_LTEXT
TL_LTXIND	/1MD/U1_TLEQHDR	STRUCTURE	/UGI/XFELD
TPLNR2FTH	/1MD/U1_TFLHDR	STRUCTURE	/UGI/TPLNR_GEN
TL_LTXIND	/1MD/U1_TLGNHDR	STRUCTURE	/UGI/XFELD
VGE02	/1MD/U1_WORKCNTR	STRUCTURE	/UGI/U1_WC_VGE02
/1MD/U1LONGTEXT	/SMD/MD____000V	TABLE	/UGI/LONGTXT
/1MD/U1LONGTEXTT	/SMD/MD____000W	TABLE	/UGI/LONGTXT
/1MD/U1LONGTXT	/SMD/MD____000X	TABLE	/UGI/LONGTXT
/1MD/U1LONG_TEXT	/SMD/MD____000Y	TABLE	/UGI/LONGTXT
/1MD/U1LONG_TXT	/SMD/MD____000Z	TABLE	/UGI/U1_OL_LTEXT
/1MD/U1LTX	/SMD/MD____0014	TABLE	/UGI/U1_MSP_LTEXT
/1MD/U1LTX_OL	/SMD/MD____0017	TABLE	/UGI/U1_OL_LTEXT
/1MD/U1MRMAXI	/SMD/MD____001A	TABLE	/UGI/MRMAXI
/1MD/U1MRMINI	/SMD/MD____001C	TABLE	/UGI/MRMINI

Information

Deletion is successful.

12. After successful deletion, proceed with add on uninstallation for UGI component using SAINT.