

SAP Solution Brief

SAP Solutions for Enterprise Information Management

SAP Master Data Governance, Enterprise Asset Management Extension by Utopia

Objectives

Solution

Benefits

Quick Facts

Keep Enterprise Assets Productive with Effective Master Data Governance



The Best-Run Businesses Run SAP®

Base maintenance plans on trusted information

Base maintenance plans on trusted information

To stay productive, you must base plant and equipment management decisions on data you can trust. With the SAP® Master Data Governance application, enterprise asset management extension by Utopia, you can create and manage asset master data in the plant maintenance process centrally. The result: [effective asset lifecycle management that keeps assets running productively.](#)

Organizations in asset-heavy industries – including oil and gas, chemicals, utilities, mills, and mining – must run their plants and equipment at optimum capacity to be profitable. Enterprise asset management solutions help companies maximize plant equipment uptime. However, success depends on one crucial element: accurate information.

Too often, manual updating of information across multiple, disparate applications leads to omissions and inaccuracies. As a result, maintenance, repair, and operations (MRO)

work is inadequate or delayed, decreasing uptime, increasing health and safety risks, and reducing productivity.

With the enterprise asset management extension, you can centrally manage master data related to your plant and equipment assets from within the plant maintenance process. Drawing on this single source of accurate information helps speed up the transition between build and operational phases for assets and helps ensure your assets stay up and running.



Create a predefined master data model for enterprise assets

Create a predefined master data model for enterprise assets

Make data maintenance straightforward and efficient

Achieve accurate, time-based reporting

Control access and track changes

Manage enterprise asset data proactively

The enterprise asset management extension provides a predefined model for standard data objects used in enterprise asset management. This helps ensure your asset master data is accurate and up-to-date throughout the asset lifecycle, from design through construction, operation, and maintenance to decommission.

You can define a multilevel functional and equipment hierarchy within your environment using relevant master data objects, such as equipment and functional location master data – a key requirement in asset-heavy industries.

A predefined model for enterprise asset master data objects means accurate master data, which leads to increased productivity.



Make data maintenance straightforward and efficient

Create a predefined master data model for enterprise assets

Make data maintenance straightforward and efficient

Achieve accurate, time-based reporting

Control access and track changes

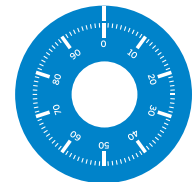
Manage enterprise asset data proactively

With the extension for SAP Master Data Governance, master data maintenance is faster and more intuitive. With a few clicks, you can view the entire list of master data for enterprise asset management and drill down to a specific data object. You can then either work on an individual data object or select a range of information for updating. The software also enables you to define business rules to validate data input, which helps ensure data accuracy and completeness.

In addition, you can set up the appropriate authorizations to enforce security and workflows across your business.

Using the flexible user interface, you can customize user screens – or define your own – to suit particular business requirements or end-user preferences. This helps make the data maintenance process as straightforward and efficient as possible, saving time and minimizing errors.

With the enterprise asset management extension, you can set up the appropriate authorizations to enforce security and workflows across your business.



Achieve accurate, time-based reporting

Create a predefined master data model for enterprise assets

Make data maintenance straightforward and efficient

Achieve accurate, time-based reporting

Control access and track changes

Manage enterprise asset data proactively

Sophisticated functionality for detailed reports, such as time-dependent and period-dependent versioning, enables you to maintain data charts for different time periods simultaneously. For example, you may wish to produce a report on the master data of a particular piece of equipment used during two consecutive quarters and see what has changed. This is important because reliable, accurate, and standardized master data is the foundation for performing maintenance budgeting, predictive maintenance, and benchmarking.

This clear and accurate reporting provides transparency and traceability across all your asset management operations. It also supports informed decisions in areas such as maintenance planning.

Manage your assets more effectively, based on accurate, up-to-date information.



Control access and track changes

Create a predefined master data model for enterprise assets

Make data maintenance straightforward and efficient

Achieve accurate, time-based reporting

Control access and track changes

Manage enterprise asset data proactively

You can configure the change authorization processes to suit your needs. In this way, you can help ensure that there are no changes to asset management master data without a valid business reason and that the person who makes the change has full clearance to do so.

The software also enables you to keep detailed records of who makes changes and when. This helps your managers control the master-data change process better. It also provides a verifiable audit trail for governance purposes and helps you ensure compliance with regulations such as ISO14224.



Stay in control of your master data with SAP software.



Manage enterprise asset data proactively

Create a predefined master data model for enterprise assets

Make data maintenance straightforward and efficient

Achieve accurate, time-based reporting

Control access and track changes

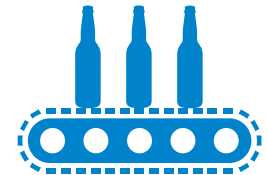
Manage enterprise asset data proactively

The enterprise asset management extension provides a repository for enterprise asset master data. This enables you to manage your data centrally, establishing a standardized data model across your asset management operations.

With a centralized solution in place, you need only make any required changes to one set of data rather than updating multiple applications. This improves consistency and helps ensure that everyone involved in enterprise asset management is referencing the most recent and accurate information.

The solution allows you to manage your enterprise asset management information on the same platform that you use to manage master data for finance, materials management, and supplier and customer relations. And by linking all master data, you can standardize and streamline data governance processes across the enterprise.

Establish a standardized data model across all asset management operations.



Increase productivity and improve safety

Increase productivity and improve safety

With all asset management applications using full and up-to-date information right from the start of the build phase, you can minimize costly delays due to information gaps when the applications become operational. And once assets are up and running, the extension helps you ensure that they stay running and productive by avoiding shutdowns caused by poor maintenance or missing parts.

Better maintenance planning reduces spares and parts costs, with advanced scheduling eliminating the need for costly expedited delivery. In addition, improved visibility of maintenance requirements helps you ensure that nothing is missed, enhancing safety across your operations. Finally, you eliminate the need for time-consuming walk-down audits prior to turnarounds.

Drive efficiency and boost profits through better maintenance planning.





Objectives

Solution

Benefits

Quick Facts

Summary

With the SAP® Master Data Governance application, enterprise asset management extension by Utopia, you can centralize and streamline your data governance processes for enterprise asset management. Better master data governance results in more accurate and complete information on which to base your maintenance planning. This helps you reduce downtime, which increases productivity and boosts profits, while improving safety.

Objectives

- Eliminate inaccuracies and omissions in master data for asset management
- Improve the quality of information for managing the asset lifecycle
- Speed up the transition between build and operational phases for assets
- Reduce downtime due to maintenance issues

Solution

- Creation and maintenance of asset master data from within the asset management process
- Solution that can be tailored to your business, with a configurable data model and user interface
- Enforced business rules through approval workflows and data validation functionality

Benefits

- Keep master data consistent, up-to-date, and accurate across the organization
- Increase productivity by keeping assets up and running
- Reduce costs through more-efficient spares and parts management
- Improve safety through more-accurate equipment data

Learn more

To find out more, go to www.sap.com/pc/tech/enterprise-information-management/software/overview.html.



© 2014 SAP SE or an SAP affiliate company. All rights reserved.

No part of this publication may be reproduced or transmitted in any form or for any purpose without the express permission of SAP SE or an SAP affiliate company.

SAP and other SAP products and services mentioned herein as well as their respective logos are trademarks or registered trademarks of SAP SE (or an SAP affiliate company) in Germany and other countries. Please see <http://www.sap.com/corporate-en/legal/copyright/index.epx#trademark> for additional trademark information and notices. Some software products marketed by SAP SE and its distributors contain proprietary software components of other software vendors.

National product specifications may vary.

These materials are provided by SAP SE or an SAP affiliate company for informational purposes only, without representation or warranty of any kind, and SAP SE or its affiliated companies shall not be liable for errors or omissions with respect to the materials. The only warranties for SAP SE or SAP affiliate company products and services are those that are set forth in the express warranty statements accompanying such products and services, if any. Nothing herein should be construed as constituting an additional warranty.

In particular, SAP SE or its affiliated companies have no obligation to pursue any course of business outlined in this document or any related presentation, or to develop or release any functionality mentioned therein. This document, or any related presentation, and SAP SE's or its affiliated companies' strategy and possible future developments, products, and/or platform directions and functionality are all subject to change and may be changed by SAP SE or its affiliated companies at any time for any reason without notice. The information in this document is not a commitment, promise, or legal obligation to deliver any material, code, or functionality. All forward-looking statements are subject to various risks and uncertainties that could cause actual results to differ materially from expectations. Readers are cautioned not to place undue reliance on these forward-looking statements, which speak only as of their dates, and they should not be relied upon in making purchasing decisions.



The Best-Run Businesses Run SAP®