



Uninstall Guide for RFM Solutions by Utopia

Release 9.2

Document History

The following table provides an overview of the most important document changes and approvals.

Version	Date	Description	Author/Reviewer
1.0	03/05/2019	Initial version	Jyoti Prasad Das/Gowri SendhillKumar

Approval History

Version	Date	Description	Name
1.0	03/05/2019	Initial Version	Lyle Snyder

Table of Contents

Introduction.....	4
Key Points.....	4
Uninstall Retail and Fashion Management.....	4
Delete RFM Components (UGI4).....	4
Uninstall Retail Mass Processing (UGIRMP).....	8
Delete RMP Components.....	8

Introduction

This guide should be followed for uninstalling UGI4 and UGIRMP components for MDG RFM 9.2 solution offered by Utopia.

Key Points

The following key points should be adhered to:

1. The uninstallation should be carried out for component that is added last (following Last In First Out order).
2. If UGIRMP component is present, then it must be uninstalled prior to the RFM component (UGI4) uninstallation. Please refer to the [UGIRMP Uninstall section](#) below.
3. This document is specific to uninstallation of Release 920.
4. The uninstallation process is not reversible, including the prerequisites steps mentioned in the report.
5. Customer should take a backup of the system prior to performing the Uninstall.
6. Any prerequisite components dependent on UGI4, for example; Fiori (UGIOD02, UGIRUI02) should be uninstalled via SAINT first.
7. Any Custom (Z objects) referencing UGI4 or UGIRMP are customer specific and need to be handled exclusively by the customer. Hence, they are not part of the report and document scope.

Uninstall Retail and Fashion Management

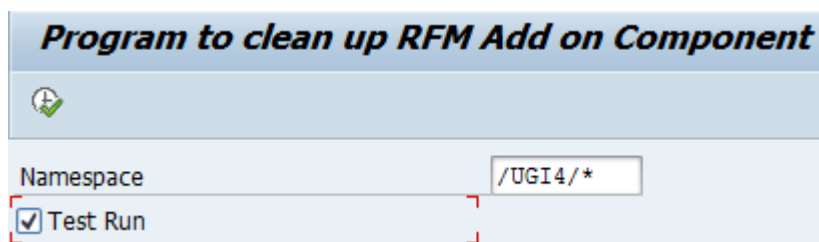
Delete RFM Components (UGI4)

If UGIRMP component is present, then it must be uninstalled prior to uninstalling the RFM component (UGI4). Please refer to the [UGIRMP Uninstall section](#) below.

Before executing the manual steps to remove the component, apply OSS Note – [2787290](#): UGI RFM - Report for Uninstallation of UGI4, UGIRMP Component.

Use the following steps for deleting RFM (UGI4) components.

1. Go to selection screen Z report - Z_ADDON_CLEANUP.
2. Select /UGI4/* namespace using F4 and execute with Test Run.

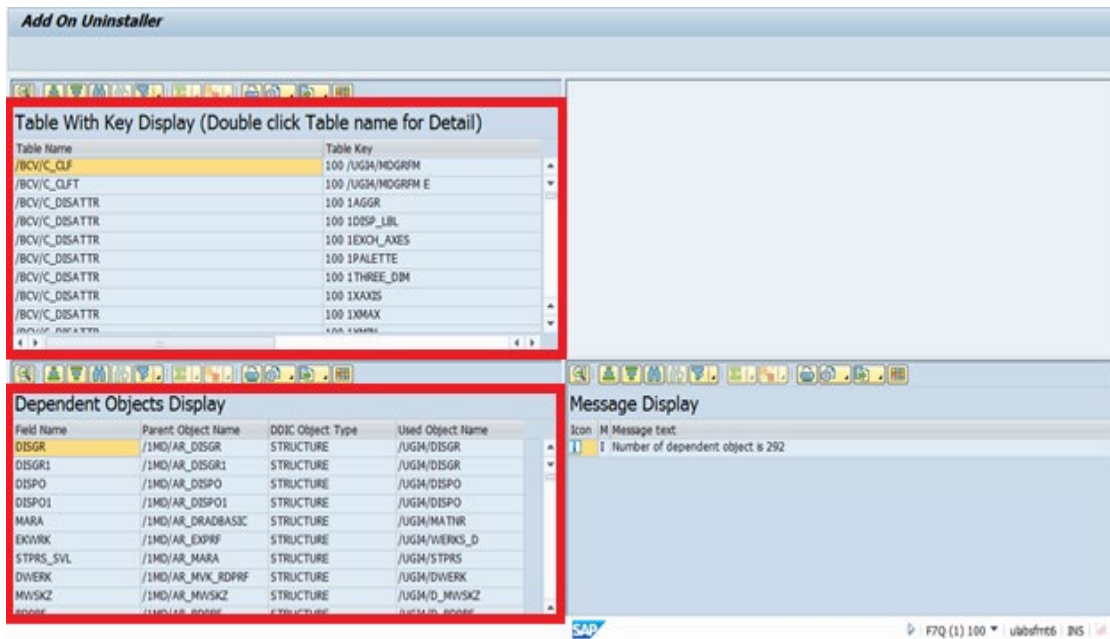


Program to clean up RFM Add on Component

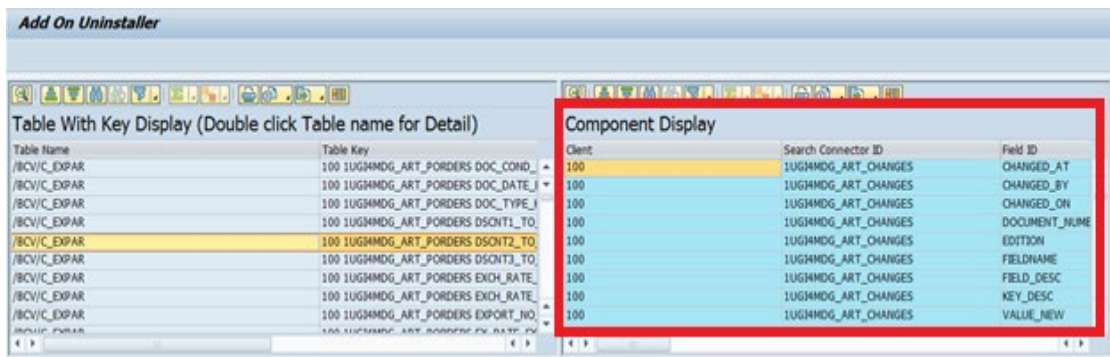
Namespace: /UGI4/*

Test Run

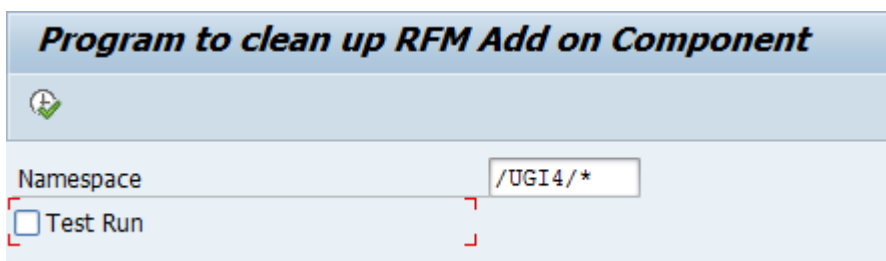
3. Review the entries shipped in the BC sets and objects with respect to UGI4 namespace. The tables, key values contained in the BC Sets and dependent DDIC object names are displayed as below.



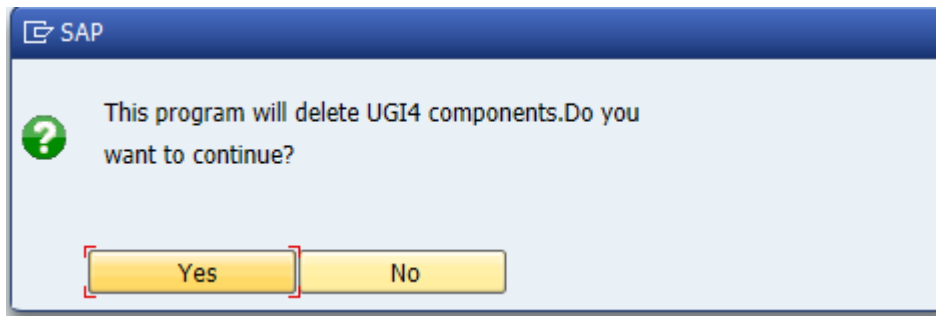
- Double-click Table name, detailed level records are displayed as shown in the following screen.
Note: This is an optional step used to review the entries for respective table.



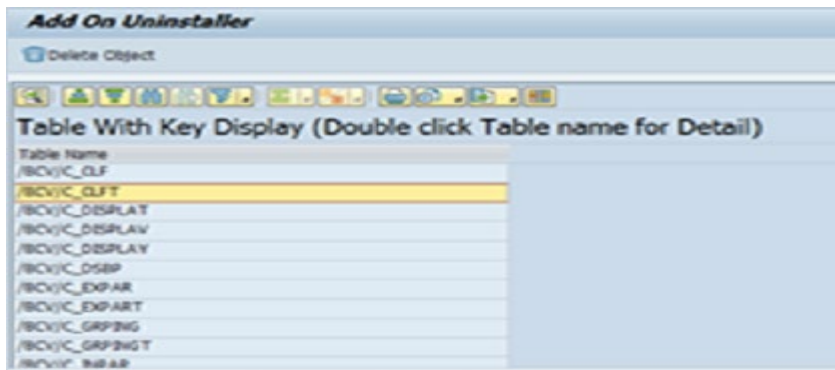
- Go back and execute the report without the test mode for manual object removal and record deletion.



A pop-up is displayed for user confirmation.

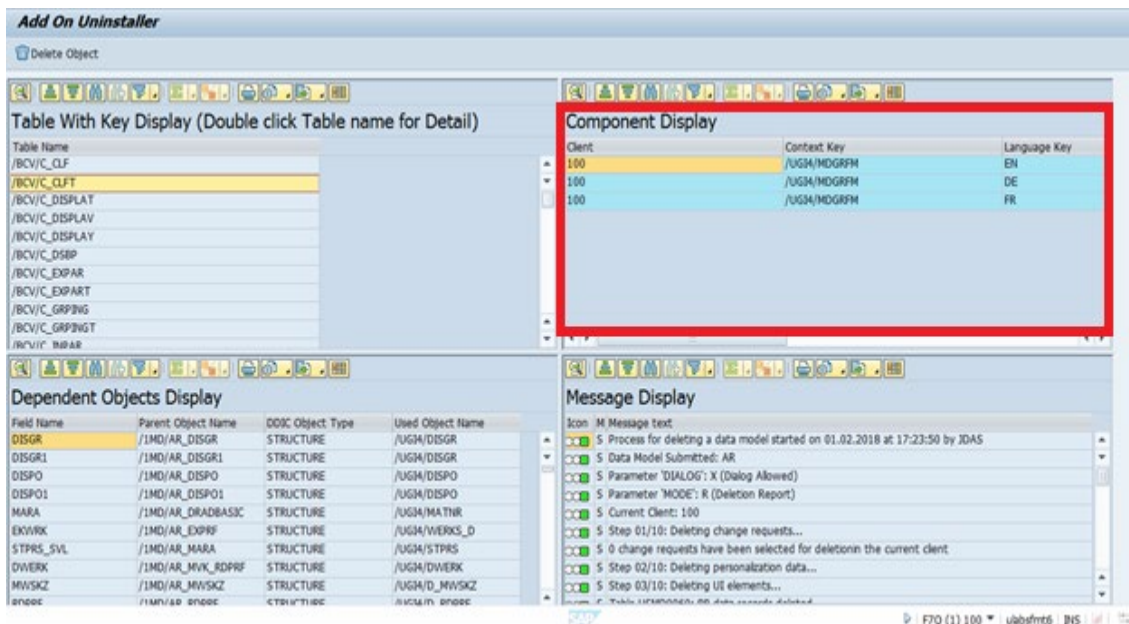


- Click "Yes" to get the table names that have undergone entry deletion.



- Double click on the table name to view the deleted entries.

Note: This is a step to validate the entries that are removed from the table.



- Review the dependent objects.
- Click "Delete object" to delete objects manually.

Add On Uninstaller

Delete Object

Table With Key Display (Double click Table name for Detail)

Table Name
/BCV/C_CLF
/BCV/C_CLFT
/BCV/C_DISPAT
/BCV/C_DISPLAY
/BCV/C_DSEB
/BCV/C_EXPAR
/BCV/C_EXPART
/BCV/C_GRPING
/BCV/C_GRPINGT
/BCV/C_MBAR

Component Display

Client	Context Key	Language Key
100	/UG4/MDGRFM	EN
100	/UG4/MDGRFM	DE
100	/UG4/MDGRFM	FR

Dependent Objects Display

Field Name	Parent Object Name	DDIC Object Type	Used Object Name
DISGR	/1MD/AR_DISGR	STRUCTURE	/UG4/DISGR
DISGR1	/1MD/AR_DISGR1	STRUCTURE	/UG4/DISGR
DISPO	/1MD/AR_DISPO	STRUCTURE	/UG4/DISPO
DISPO1	/1MD/AR_DISPO1	STRUCTURE	/UG4/DISPO
MARA	/1MD/AR_DRADBASIC	STRUCTURE	/UG4/MATNR
EKWRK	/1MD/AR_EXPRF	STRUCTURE	/UG4/WERKS_D
STPRS_SVL	/1MD/AR_MARA	STRUCTURE	/UG4/STPRS
DWERK	/1MD/AR_MVK_RDPF	STRUCTURE	/UG4/DWERK
MWSKZ	/1MD/AR_MWSKZ	STRUCTURE	/UG4/D_MWSKZ

Message Display

Icon M Message Text

- 5 Process for deleting a data model started on 01.02.2018 at 17:23:50 by JDAS
- 5 Data Model Submitted: AR
- 5 Parameter 'DIALOG': X (Dialog Allowed)
- 5 Parameter 'MODE': R (Deletion Report)
- 5 Current Client: 100
- 5 Step 01/10: Deleting change requests...
- 5 0 change requests have been selected for deletion on the current client
- 5 Step 02/10: Deleting personalization data...
- 5 Step 03/10: Deleting UI elements...

F7Q (1) 100 | uab5fms | BWS |

10. Select the relevant dependent objects causing conflict and click "Delete".

Delete Dependent Objects

Delete

Field Name	Parent Object Name	DDIC Object Type	Used Object Name
DISGR	/1MD/AR_DISGR	STRUCTURE	/UG4/DISGR
DISGR1	/1MD/AR_DISGR1	STRUCTURE	/UG4/DISGR
DISPO	/1MD/AR_DISPO	STRUCTURE	/UG4/DISPO
DISPO1	/1MD/AR_DISPO1	STRUCTURE	/UG4/DISPO
MARA	/1MD/AR_DRADBASIC	STRUCTURE	/UG4/MATNR
EKWRK	/1MD/AR_EXPRF	STRUCTURE	/UG4/WERKS_D
STPRS_SVL	/1MD/AR_MARA	STRUCTURE	/UG4/STPRS
DWERK	/1MD/AR_MVK_RDPF	STRUCTURE	/UG4/DWERK
MWSKZ	/1MD/AR_MWSKZ	STRUCTURE	/UG4/D_MWSKZ
RDPRF	/1MD/AR_RDPRF	STRUCTURE	/UG4/D_RDPRF
RNDPR	/1MD/AR_RNDPR	STRUCTURE	/UG4/D_RDPRF
/1MD/ARRNDPR	/1MD/MD_____05K	TABLE	/UG4/D_RDPRF
/1MD/ARDISGR1	/1MD/MD_____05M	TABLE	/UG4/DISGR
/1MD/ARDISGR	/1MD/MD_____05N	TABLE	/UG4/DISGR
/1MD/ARDISPO	/1MD/MD_____05Q	TABLE	/UG4/DISPO
/1MD/ARDISPO1	/1MD/MD_____05T	TABLE	/UG4/DISPO
/1MD/ARWRF_WSHCO	/1MD/MD_____05U	TABLE	/UG4/WRF_CARE_CODE_REGI...
/1MD/ARRDPRF	/1MD/MD_____05X	TABLE	/UG4/D_RDPRF
/1MD/AREKWRK	/1MD/MD_____061	TABLE	/UG4/WERKS_D
/1MD/ARMVK_RDPRF	/1MD/MD_____066	TABLE	/UG4/D_RDPRF
/1MD/ARMARA	/1MD/MD_____067	TABLE	/UG4/MATNR
/1MD/ARMWSKZ	/1MD/MD_____068	TABLE	/UG4/D_MWSKZ
/1MD/ARBWTAR_ST	/1MD/MD_____06C	TABLE	/UG4/BWTAR_D
/1MD/ARORG_FACT	/1MD/MD_____06E	TABLE	/UG4/ORG_ART_FACTOR
/1MD/ARTXTMVKE	/1MD/MD_____06G	TABLE	/UG4/MDG_BS_ART_MVKEST...
/1MD/ARSCHGT	/1MD/MD_____06I	TABLE	/UG4/SCHGT

Delete Dependent Objects

Field Name	Parent Object Name	DDIC Object Type	Used Object Name
DISGR	/1MD/AR_DISGR	STRUCTURE	/UGI4/DISGR
DISGR1	/1MD/AR_DISGR1	STRUCTURE	/UGI4/DISGR
DISPO	/1MD/AR_DISPO	STRUCTURE	/UGI4/DISPO
DISPO1	/1MD/AR_DISPO1	STRUCTURE	/UGI4/DISPO
MARA	/1MD/AR_DRADBASIC	STRUCTURE	/UGI4/MATNR
EKWRK	/1MD/AR_EXPRF	STRUCTURE	/UGI4/WERKS_D
STPRS_SVL	/1MD/AR_MARA	STRUCTURE	/UGI4/STPRS
DWERK	/1MD/AR_MVK_RDPRF	STRUCTURE	/UGI4/DWERK
MWSKZ	/1MD/AR_MWSKZ	STRUCTURE	/UGI4/D_MWSKZ
RDPRF	/1MD/AR_RDPRF	STRUCTURE	/UGI4/D_RDPRF
RNDPR	/1MD/AR_RNDPR	STRUCTURE	/UGI4/D_RDPRF
/1MD/ARRNDPR	/1MD/MD_____05K	TABLE	/UGI4/D_RDPRF
/1MD/ARDISGR1	/1MD/MD_____05M	TABLE	/UGI4/DISGR
/1MD/ARDISGR	/1MD/MD_____05N	TABLE	/UGI4/DISGR
/1MD/A			/UGI4/DISPO
/1MD/A			/UGI4/DISPO
/1MD/A			/UGI4/WRF_CARE_CODE_REGI...
/1MD/A			/UGI4/D_RDPRF
/1MD/A			/UGI4/WERKS_D
/1MD/A			/UGI4/D_RDPRF
/1MD/A			/UGI4/MATNR
/1MD/AR_MWSKZ	/1MD/MD_____008	TABLE	/UGI4/D_MWSKZ
/1MD/ARBWTAR_ST	/1MD/MD_____06C	TABLE	/UGI4/BWTAR_D
/1MD/ARORG_FACT	/1MD/MD_____06E	TABLE	/UGI4/ORG_ART_FACTOR
/1MD/ARTXTMVKE	/1MD/MD_____06G	TABLE	/UGI4/MDG_BS_ART_MVKEST...
/1MD/ARSchGT	/1MD/MD_____06I	TABLE	/UGI4/SCHGT
/1MD/ARTEXT_SEO	/1MD/MD_____06I	TABLE	/UGI4/SEO

Information: Deletion is successful.

- After successful deletion, proceed with add on uninstallation for UGI4 component using SAINT.

Uninstall Retail Mass Processing (UGIRMP)

This section provides information for uninstalling UGIRMP components of RMP (solution offered by Utopia).

Delete RMP Components

Before executing the manual steps to remove the component, apply the OSS Note – [2787290](#): UGI RFM - Report for Uninstallation of UGI4, UGIRMP Component

Use the following steps for deleting RMP (UGIRMP) components.

- Go to selection screen Z report - Z_ADDON_CLEANUP_RMP.
- Select /UGIRMP/* namespace using F4 and execute "Test Run".

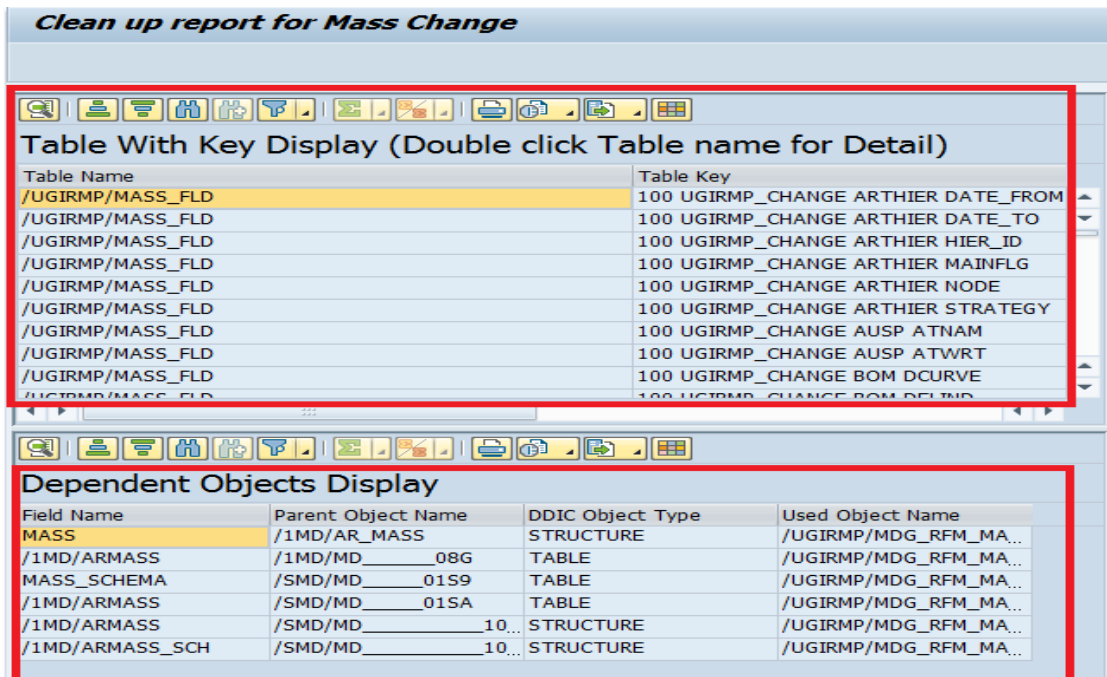
Mass Change Clean up report

Namespace

Test Run

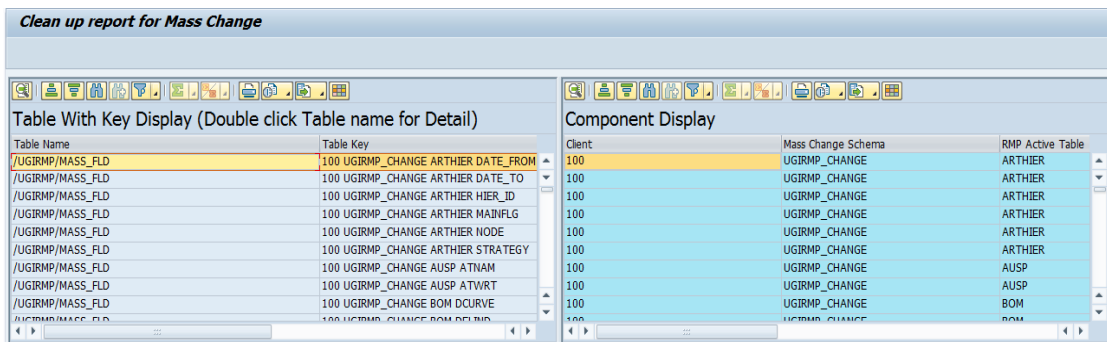
- Review the entries shipped in the BC sets and objects with respect to UGIRMP namespace.

The tables, key values contained in the BC Sets and dependent DDIC object names are displayed as in the following screen.

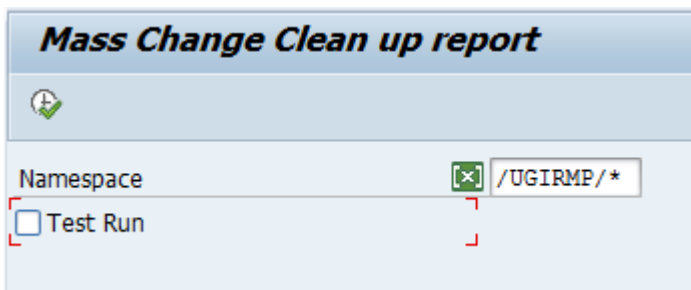


- Double-click Table name, detailed level records are displayed as shown in the following screen.

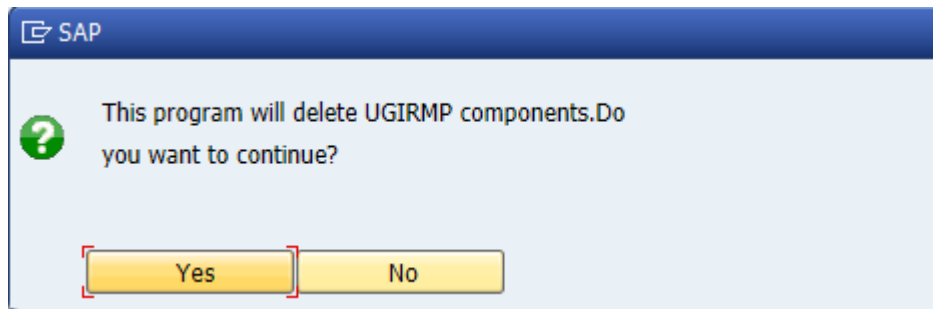
Note: This is an optional step used to review the entries for respective table.



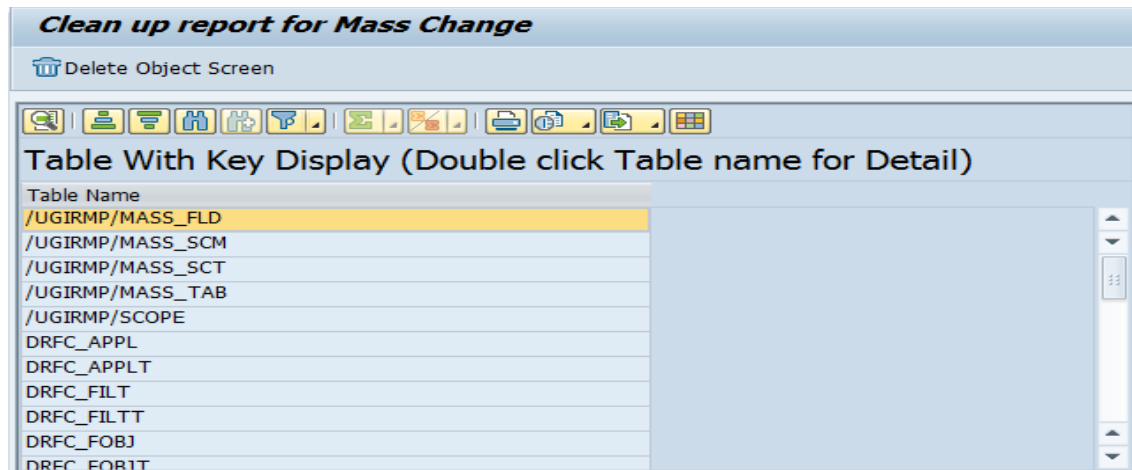
- Go back and execute the report without the test mode for manual object removal and record deletion.



A pop-up is displayed for user confirmation.

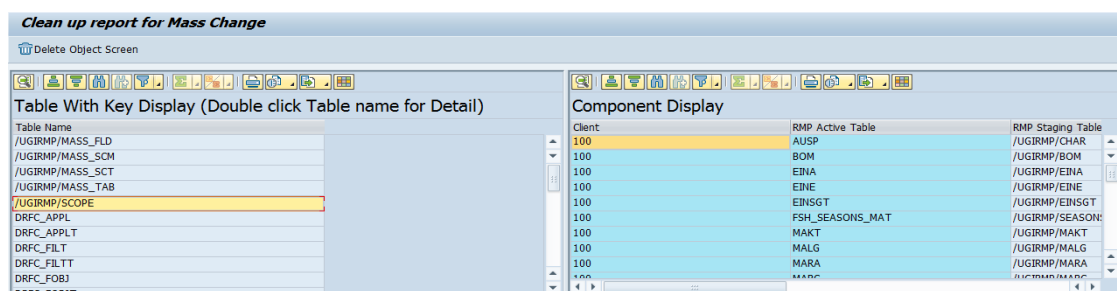


- Click "Yes" to get the table names that have undergone entry deletion.

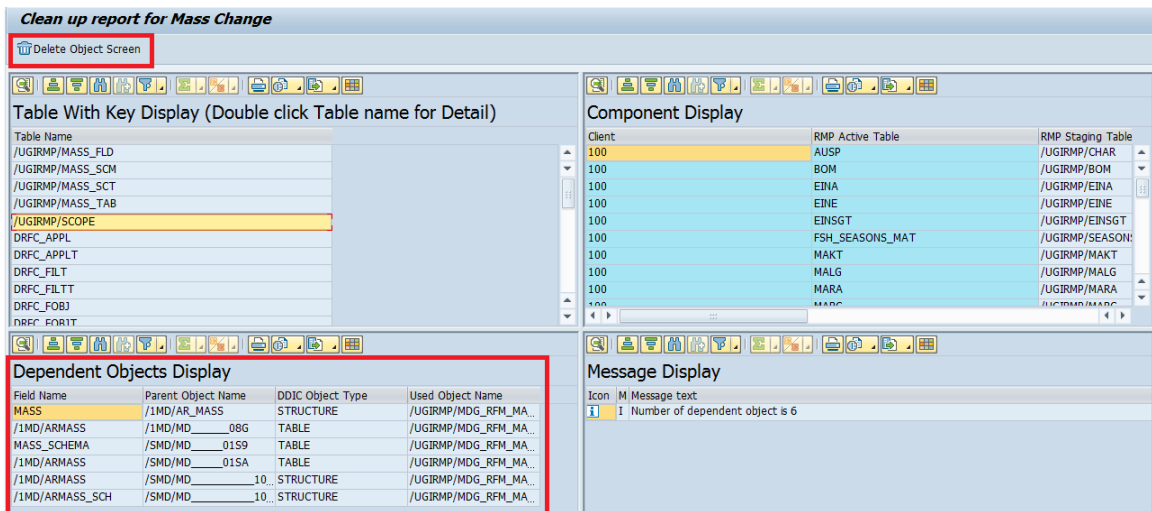


- Double click on the table name to view the deleted entries.

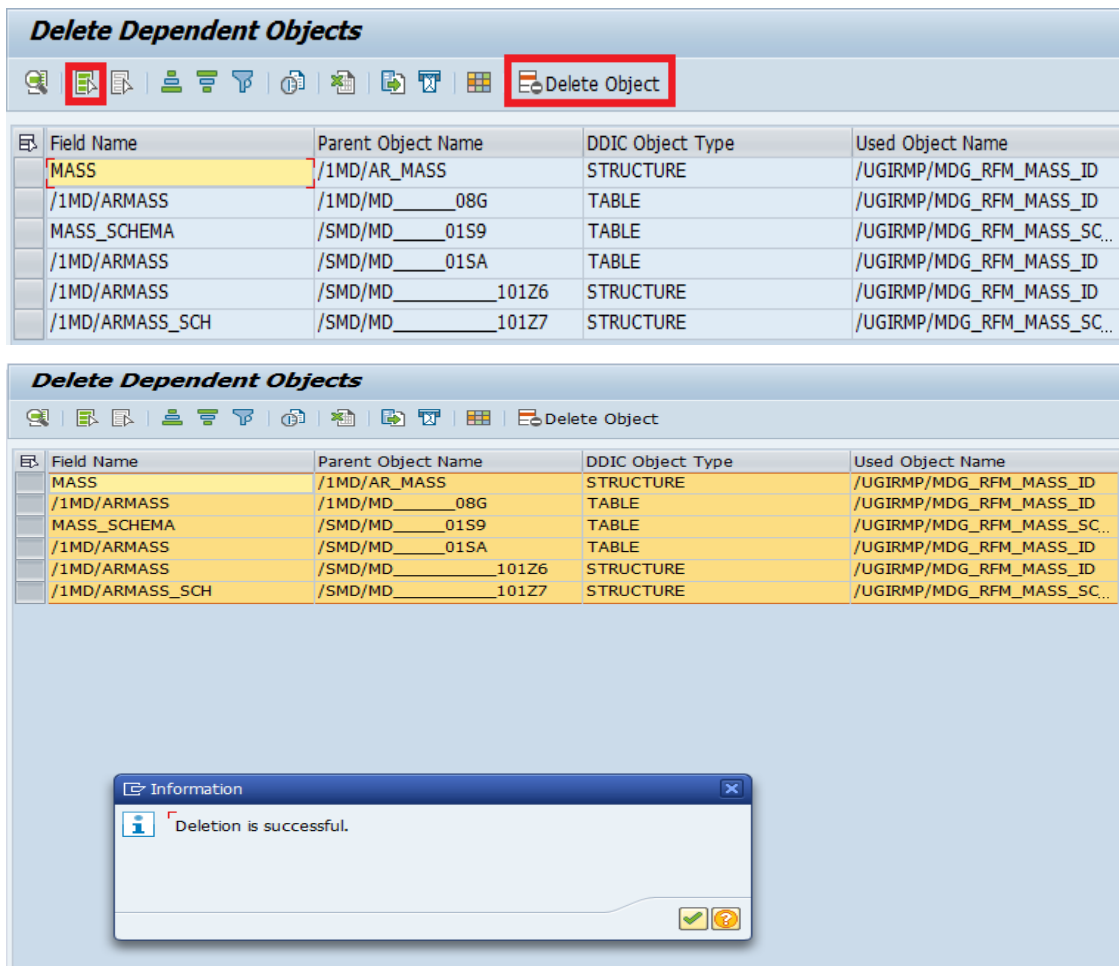
Note: This is a step to validate the entries that are removed from the table.



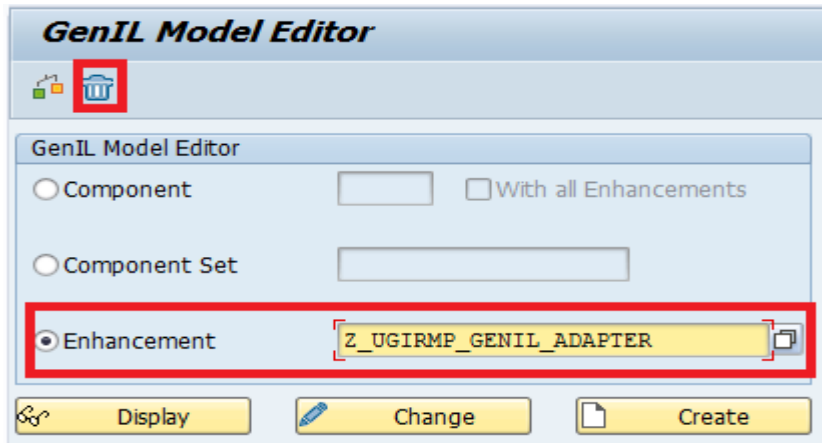
- Review the dependent objects.
- Click "Delete object" to delete objects manually.



10. Select the relevant dependent objects causing conflict and click “Delete”.



11. Run transaction code - /nGENIL_MODEL_BROWSER to delete the custom enhancement – Z_UGIRMP_GENIL_ADAPTER.



12. Proceed with add on uninstallation for UGIRMP component using SAINT.