



Configuration Guide for uXLoader for RFM Solutions by Utopia

Release 9.2

Document History

The following table provides an overview of the most important document changes and approvals.

Version	Date	Description	Name
1.0	05-04-2019	Initial version	Kumar Saurav

Approval History

Version	Date	Description	Name
1.0	05-04-2019	Approved version	Lyle E Snyder

Table of Contents

Introduction.....	4
Installing Solution Setup for uXLoader.....	4
Logging and Exploring into uXLoader.....	5
uXLoader User Interface (UI) Elements.....	5
Explore the uXLoader GUI elements.....	6
Logging into uXLoader	7
Appendix I: RFC Details for RFM/FMS Objects.....	10
Appendix II: ODATA Service Names.....	10
Appendix III: BC-Sets	11
Appendix IV: Displaying Product information.....	11
Appendix V: Uninstalling uXLoader.....	11
Appendix VI: Troubleshooting.....	12
Installation errors.....	12
Prerequisites for uXLoader.....	13
Error messages.....	13
Error in Data.....	14

Introduction

uXLoader is a customized add-on tool in Microsoft Excel, which allows you to upload large volumes of data seamlessly and process the uploaded data using Microsoft Excel. In other words, uXLoader helps you to upload master data in SAP MDG directly through Excel for Retail and Fashion Management System.


The unique features of this tool are listed as in the following:

- Uploads Master Data into SAP MDG
- Uploads large volume of data with Excel-based predefined templates
- Creates and updates master data simultaneously

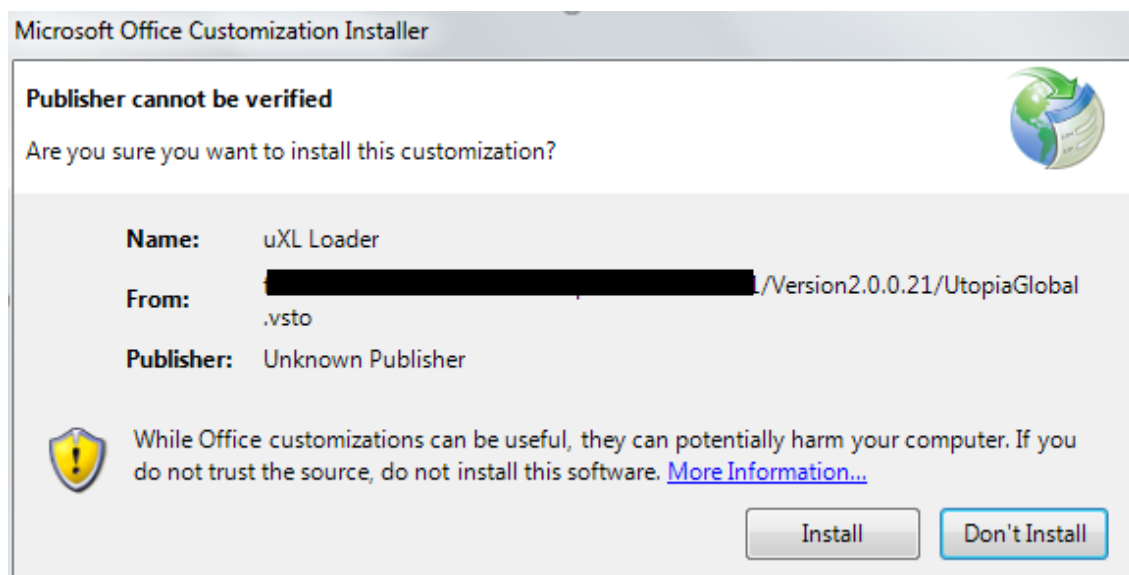
Installing Solution Setup for uXLoader

This section describes the process of installing the uXLoader. You can also use the same steps, if you already have a version installed and want to upgrade to the latest release.

Use the following steps to set up Utopia add-on in Excel and the install the uXLoader.

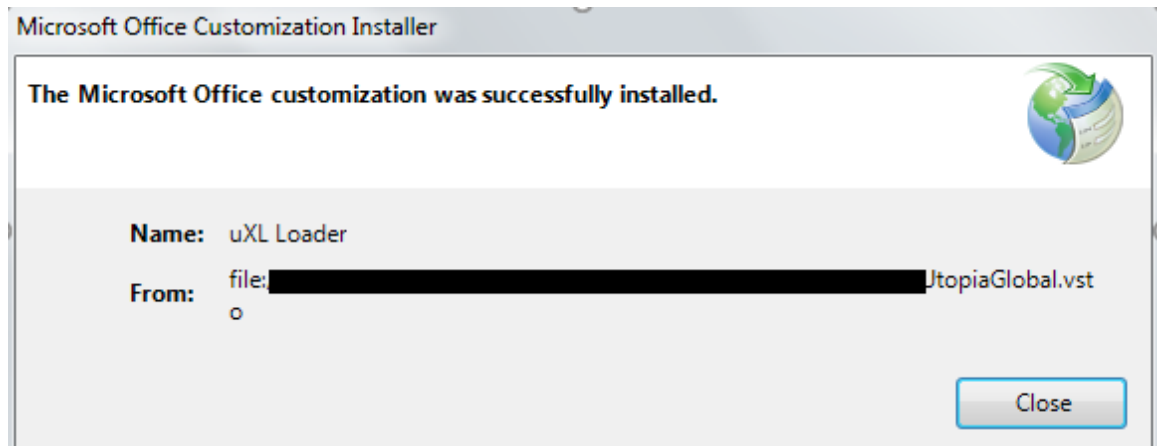
1. Navigate to the folder on your system where the Utopia Solution Setup file is saved and extracted.
2. Click  to run the installer.

The system displays the Microsoft Office Customization Installer screen as in the following screen.



3. Click "Install" button.

A "The Microsoft Office customization was successfully installed" message is displayed.



i Note

The successful installation displays the Utopia add-on menu option in the Excel sheet.

If you have any specific uXLoader version installed on your machine, you must uninstall the existing version before installing the latest version. Otherwise, the system displays a message another uXLoader version is already installed. See [Appendix IV: Uninstalling uXLoader](#).

Logging and Exploring into uXLoader

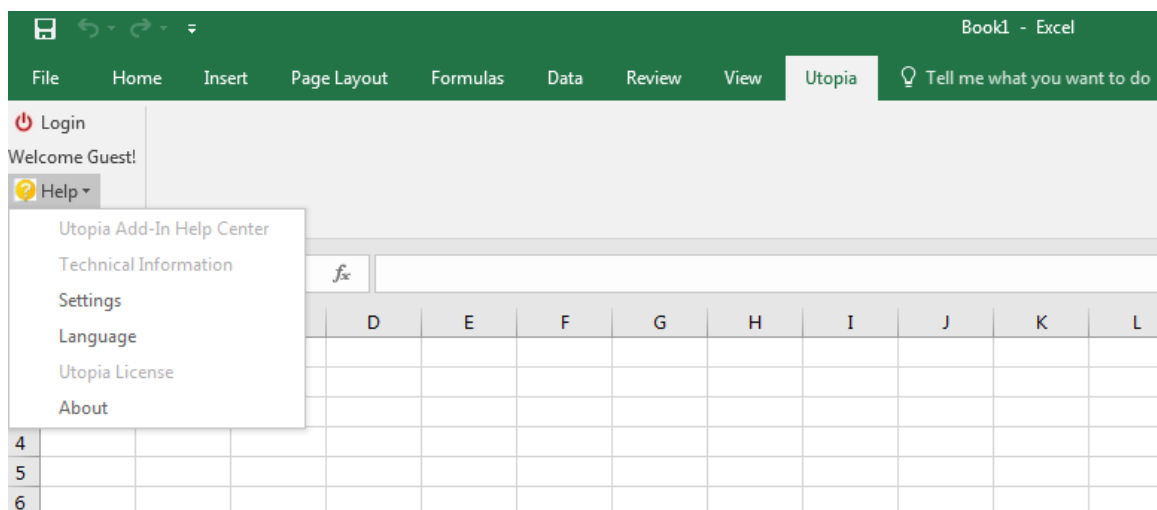
This section describes the process of logging into uXLoader and describes its UI elements.

i Note

You should have SAP Login enabled on the system before running application.

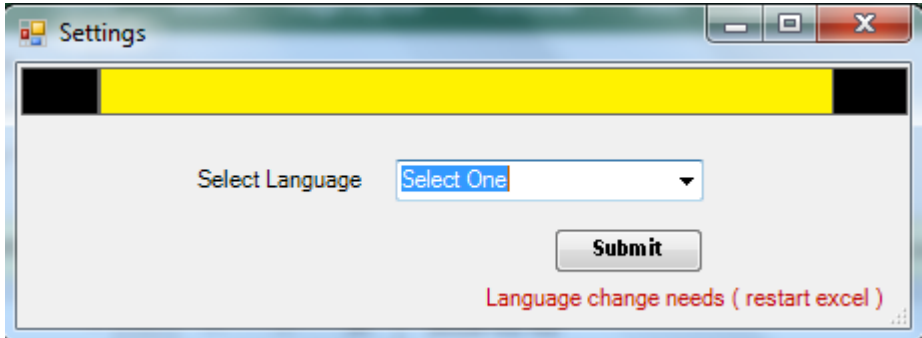
uXLoader User Interface (UI) Elements

This section illustrates the significant uXLoader user interface elements.



Explore the uXLoader GUI elements

This table lists the significant GUI elements that you might be looking for in the uXLoader:

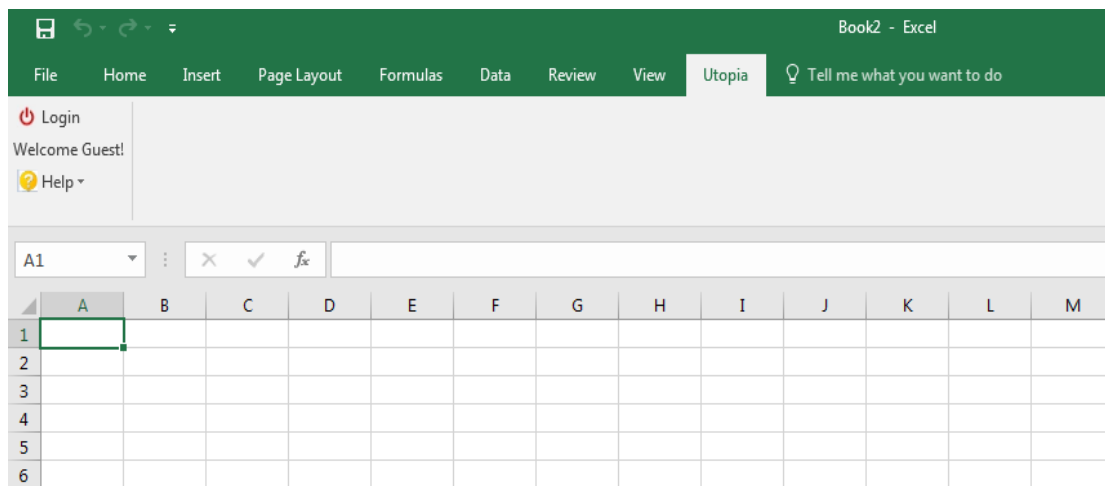
Function	Menu Option
Activate the following options: <ul style="list-style-type: none"> Login button, Welcome <User> Help drop-down 	Utopia Tab
Displays the popup to enter the system details and the login credentials	Login
Displays the default message before login	Welcome Guest!
Displays the following drop-down list: <ul style="list-style-type: none"> Utopia Add-in Help Center Technical Information Settings Language Utopia License About 	Help
	Utopia Add-in Help Center (inactive for this release)
	Technical Information (inactive for this release)
Displays the login information for the selected object	Settings
Displays the version and copyright information	About
Language gives the multi-language support. Currently English and German languages are supported. Click on language button before you log in to Excel.	Language
 <p>Select desired Language and click on submit. Excel will be closed. Reopen the Excel. The menus and popups will be displayed in the language that is chosen.</p>	
Data Fields Selection (Hide/Unhide)	Control Panel
Test-Runs/Validates data	Check
Processes data through MDG to create CR(s)	Submit
Prepares the data file to create CR(s)	Data Sheet

Function	Menu Option
Displays success or failure messages	Return Sheet
Displays if there are any errors in the data that has been maintained in Excel data sheet	Log Trace

Logging into uXLoader

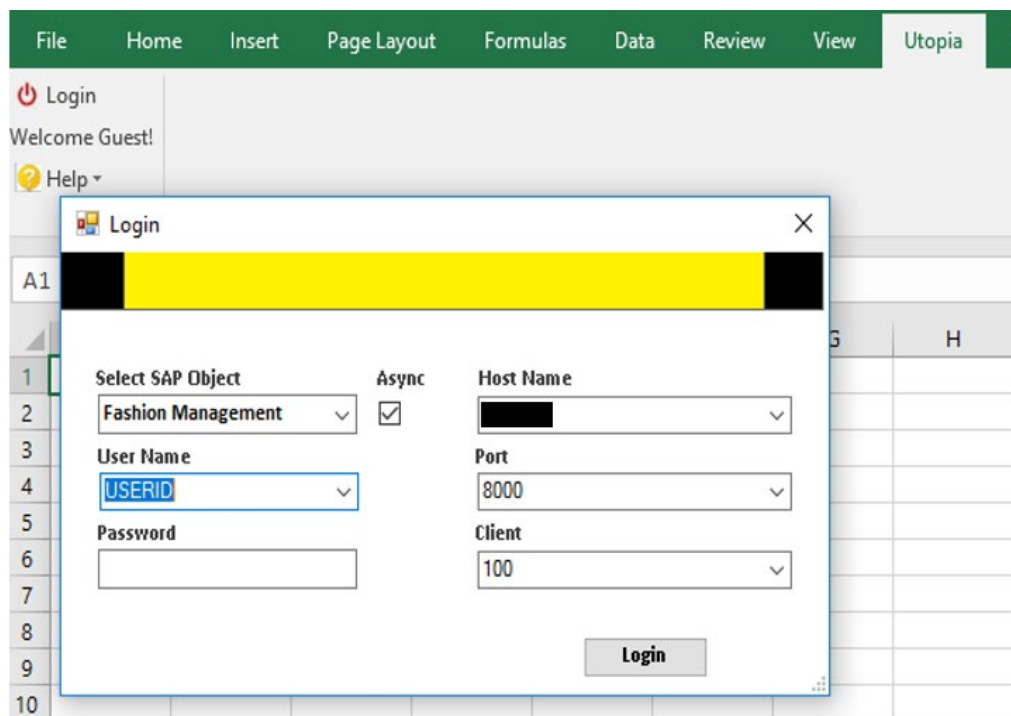
Use the following steps to log in the uXLoader.

1. Launch uXLoader.



2. Click "Login".

The system displays the "Login" popup.



3. Enter the details for the fields as described in the following table:

Field	Description
Select SAP Object	Drop-down n list displays the list of supported objects
User Name	Enter SAP user name
Password	Enter the password
Host Name	Enter the host name
Port	Enter the port name
Client	Enter the client
“Login” button	Click “Login” button to access work on Excel template. The system displays the Welcome! <User> message and Submit Data sheet to process.

Login

Select SAP Object: Fashion Management, Retail Fashion Management, Fashion Management

Async:

Host Name: [Redacted]

Port: 8000

Client: 100

Password: [Empty]

Login

Login

Select SAP Object: Fashion Management

Async:

Host Name: [Redacted]

Port: 8000

Client: 100

User Name: USERID

Password: #####

Login

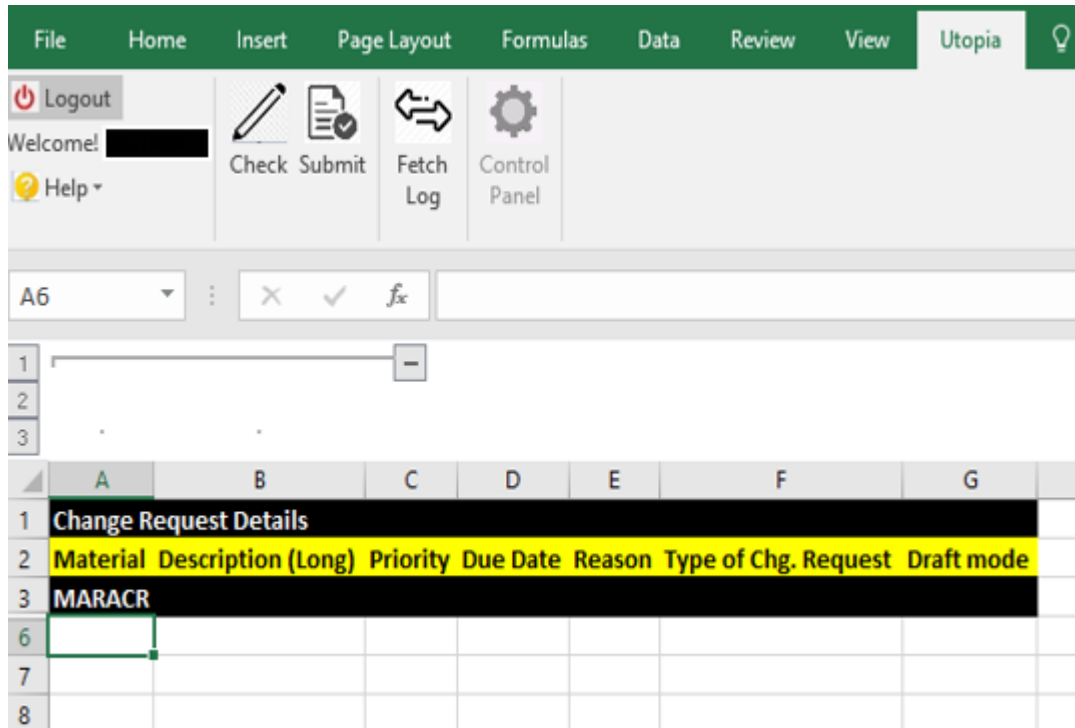
The system generates template for selected object during login to prepare data from row number 6 onwards.

Note: Each work sheet represents an Entity

Sample template attached below.



Async UXLoader Template.xlsx



1	A	B	C	D	E	F	G
1	Change Request Details						
2	Material	Description (Long)	Priority	Due Date	Reason	Type of Chg. Request	Draft mode
3	MARACR						
6							
7							
8							

Appendix I: RFC Details for RFM/FMS Objects

This section describes the FMS details for an MDG entity.

S No	Entity	RFC Name
1	RFM	/UGIRFMXL/_ARTICLE_CR_CREATE
2	FMS	/UGIRFMXL/_FMS_CR_CREATE

Appendix II: ODATA Service Names

The following table lists the different ODATA service names for the corresponding objects:

Object Name	Service Name (Asynchronous)	Service Name (Synchronous)
RFM	/UGIRFMXL/RFM_SOP_TAB_PROC	/UGIRFMXL/RFM_SOP_TAB_PROC
FMS	/UGIRFMXL/FMS_SOP_TAB_PROC	/UGIRFMXL/FMS_SOP_TAB_PROC

Service Name (Asynchronous)	Entity Name	Entity Object	Header Set
/UGIRFMXL/RFM_SOP_TAB_PROC	MaterialHeader	MaterialHeader	MaterialSet
/UGIRFMXL/FMS_SOP_TAB_PROC	MaterialHeader	MaterialHeader	MaterialSet

Service Name (Synchronous)	Entity Name	Entity Object	Header Set
/UGIRFMXL/RFM_SOP_TAB_PROC	MaterialHeader	MaterialHeader	MaterialSet
/UGIRFMXL/FMS_SOP_TAB_PROC	MaterialHeader	MaterialHeader	MaterialSet

uXLoader RFM Additional Services

S No	Object	Service
1	RFM – Service for Value Help Details	/UGIRFMXL/UTILITIES

Appendix III: BC-Sets

uXLoader RFM BC-Sets:

Activate the following BC Sets for RFM.

- /UGIRFMXL/F4_UTILITIES_920 is created to capture value help table entries of table /UGIRFMXL/_V_F4.

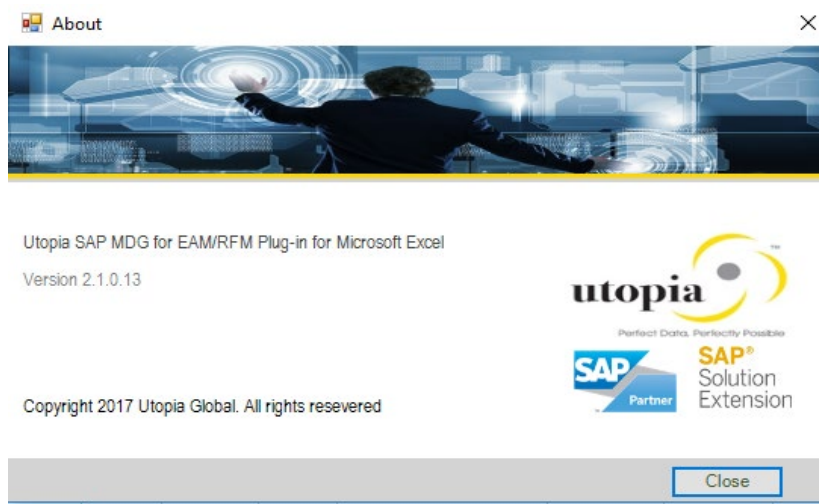
Appendix IV: Displaying Product information

The About option in the uXLoader displays the details of the installed version and the copyright information of the product.

Use the following steps to display the product information.

- Login to uXLoader. Refer [Logging into uXLoader](#) for more information.
- Click on Help dropdown and select About.

Version of the uXLoader and copyright information are displayed as in the following screen.



Appendix V: Uninstalling uXLoader

Before upgrading to the latest uXLoader version, you must first uninstall the current version from the system.

To uninstall the existing version, use the following steps.

1. Click Start.
2. Navigate to Control Panel > Programs and Features > uXL Loader > Right-click on uXL Loader and select Uninstall.

Organize		Uninstall			
Name	Publisher	Installed On	Size	Version	
uXL Loader	UtopiaGlobal Inc	5/25/2017		1.0.0.16	
Adobe Acrobat Reader DC	Adobe Systems Incorporated	5/21/2017	455 MB	17.009.20044	
Microsoft OneDrive	Microsoft Corporation	5/21/2017	84.8 MB	17.3.6799.0327	
TeamViewer 12	TeamViewer	5/17/2017	60.8 MB	12.0.72365	

i Note

Refer to [Installing Solution Setup for uXLoader](#) for more information.

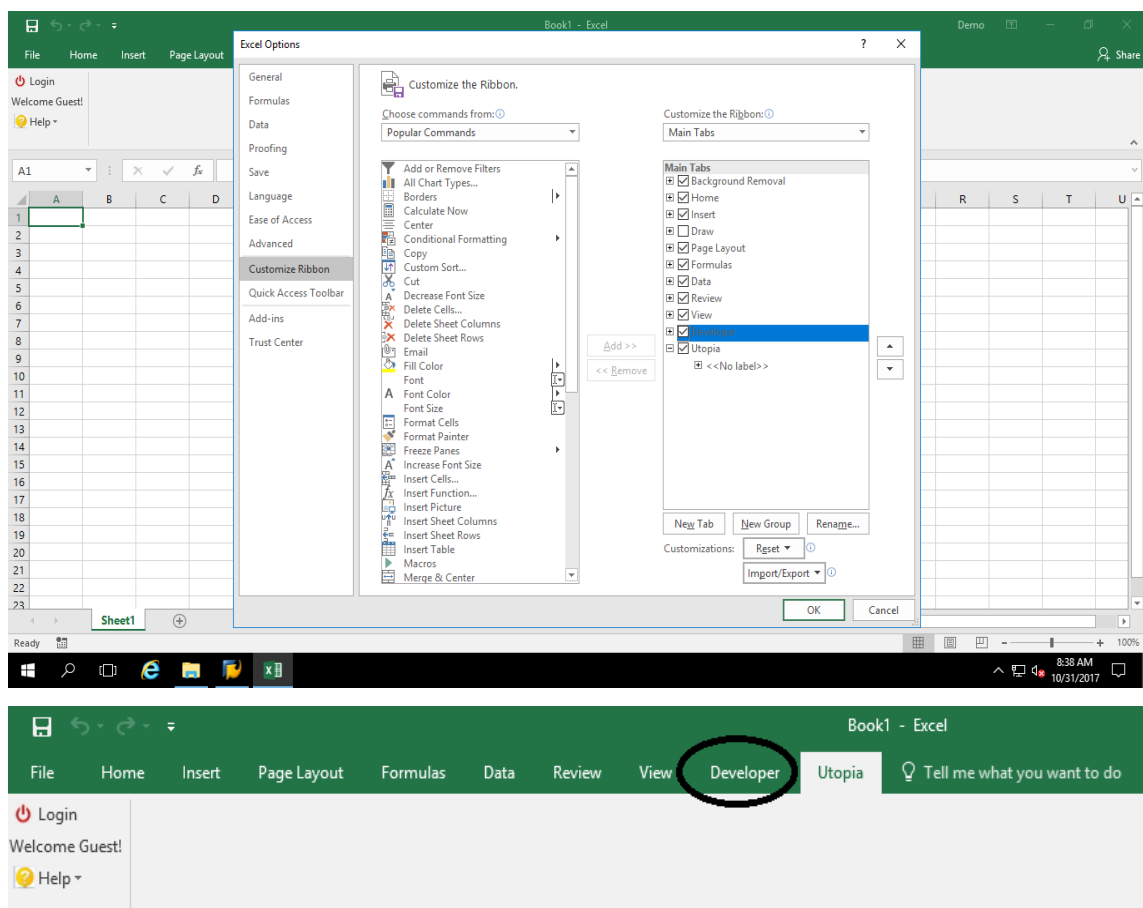
Appendix VI: Troubleshooting

This troubleshooter section provides a listing of common errors, the reasons why you are getting these errors and the solution to help you fix these issues that you may experience while using uXLoader.

- [Installation errors](#)
- [Error messages](#)
- [Error in Data](#)

Installation errors

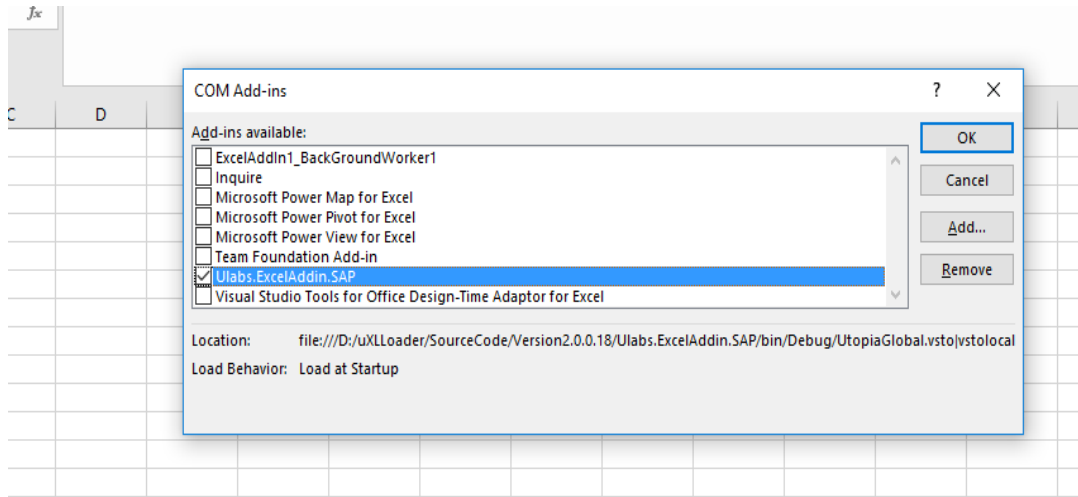
1. The “Login” button in Utopia tab remains invisible, after installation of uXLoader.
 - Reason 1: The “Developer” tab needs to be enabled in Excel Ribbon tab.
Resolution: In File -> Options -> Add-ins -> Enable the Developer tab at Excel Ribbon at Customize Ribbon option.



Once the button is visible, the option can be unchecked.

- Reason 2: Ulabs.ExcelAddin.SAP option in Add-in feature might have been disabled at COM Add-ins option.

Resolution: In File -> Options -> Add-ins -> Manage -> Select COM Add-ins. Uncheck the Ulabs.ExcelAddin.SAP and close the Excel. Then again check the same. Login button will be visible.



2. No response from Excel when you click the “Login” button.

- Reason: The SAP GUI has not been installed or the host file is missing.

Resolution: Install SAP GUI and make sure the host file is installed at the following location C:\Windows\System32\drivers\etc. Verify the prerequisites as detailed:

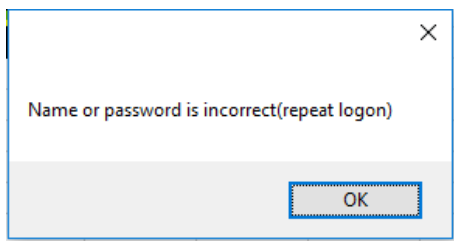
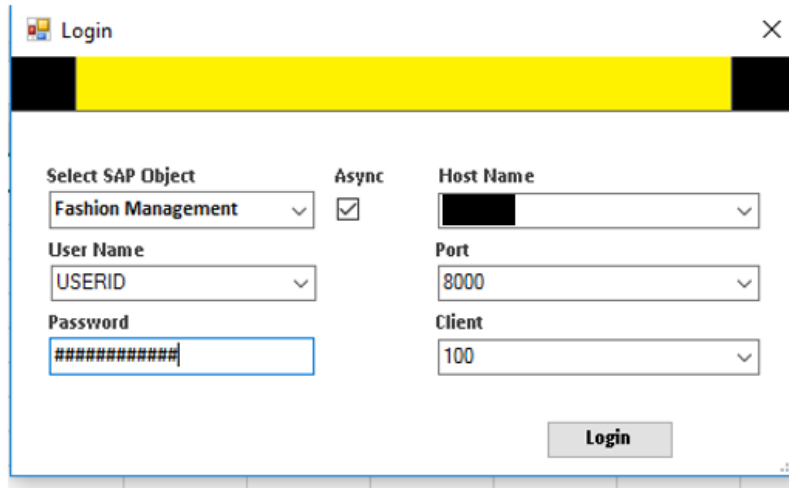
Prerequisites for uXLoader

- Microsoft Office Excel with Add-in feature enabled
- SAP GUI
- Visual Studio 2010 Runtime(x64)
Host file needed to be available at C:\Windows\System32\drivers\etc to proper login into the system
- uXLogon_Objects.ini file need to be available at C:\Users\<User>\AppData\Roaming\SAP\Common to select object from logon form.

Error messages

Error messages displayed as in the following screen: “Name or password is incorrect (repeat logon)”

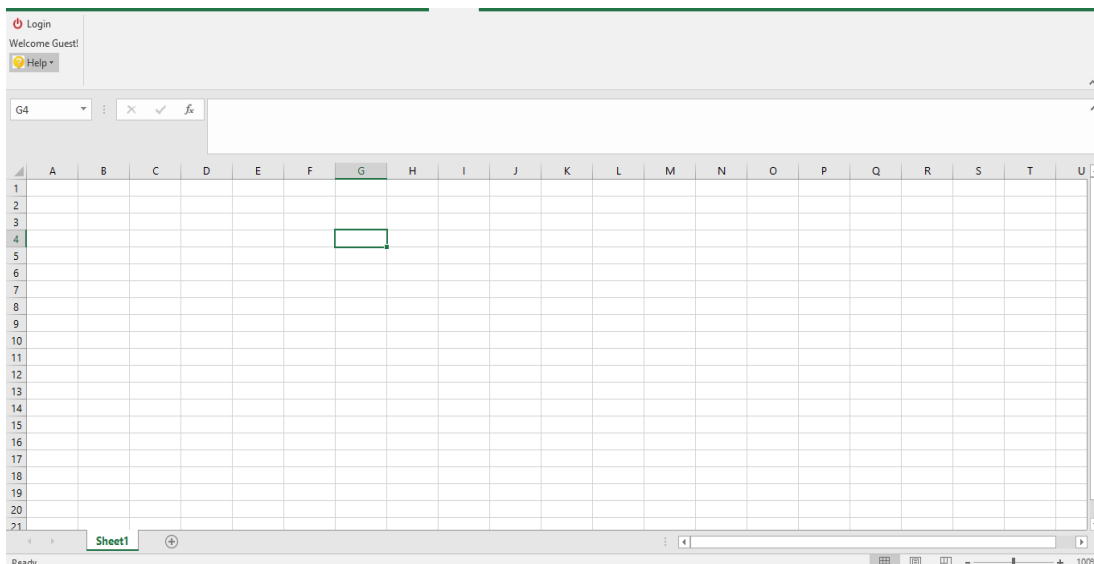
- Reason: User typed invalid credentials. For example, incorrect username.



Resolution: To resolve this, valid SAP credentials needs to be entered.

3. After clicking “Log In”, uXLoader template does not load.

- Reason: Host name is invalid or incorrect.

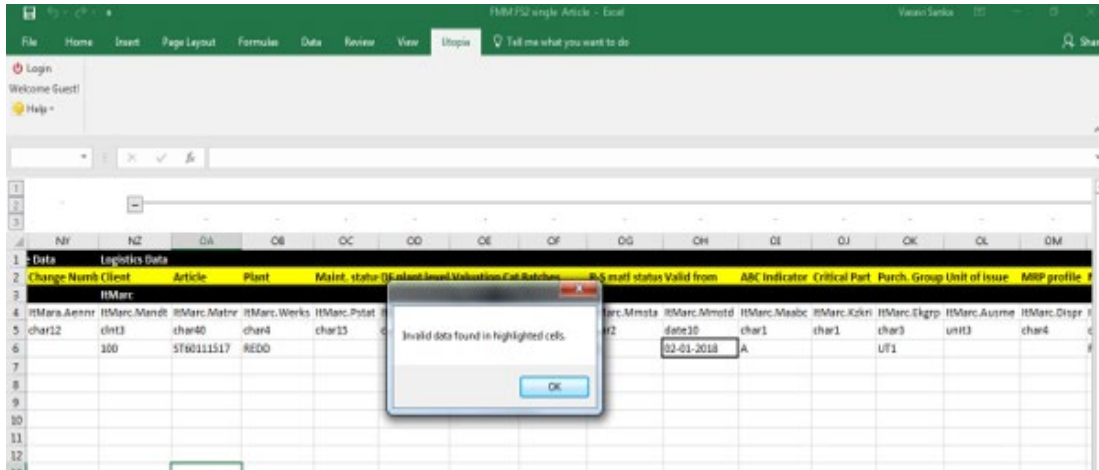


Resolution: To resolve this, use the valid SAP Application Server as hostname.

Error in Data

Error message displayed as in the following screen: Invalid data found in highlighted cells.

- Reason: For example, User entered incorrect date format.



Resolution: Enter a valid date format as yyyy-mm-dd as specified. Error details can be obtained from the transaction code SRT_LOG.