

# Comparing Safran Project with Primavera P6

Forum Safran 2019 | **Presenter:** Steinar Dalva

# Topic

- In major projects
  - Safran Project dominates in Norway
  - Primavera P6 dominates elsewhere

Some people ask:

- “Why not use P6 also in Norway?”
  - “Because Safran is better”
  - “How is it better?”



In this presentation I refer to

- Safran Project 7.3.1
- Primavera P6 Professional 18.0.0

I got valuable input to this presentation from

**Tone Furenes, Rosenberg Worley**

Thank you!



# Workshop – “How is Safran better?”

- Statements from users are stronger than from suppliers (like us)
- How many here have used P6?
- What is your view of the benefits of Safran versus P6?

- Features
- Benefits



Workshop – “How is Safran better?”

Suggestions anybody?

# P6 versus Safran

- There are so many differences
- Some are important for some, and irrelevant for others
- I will share some examples with you.



# Reporting

- Histograms & S-Curves
  - One of Safran Project's most used reports – Safran is seriously better than P6
- Bar Charts
  - Safran is much better than P6
- Other graph types
  - Noticeable differences, some similarities - Pros & Cons in both directions
- Tabular Reports
  - Not significantly different
- Report packages
  - Not really available in P6 – Many Safran users use this a lot, big time saver
- External reporting / BI tools may be used for both Safran and P6.

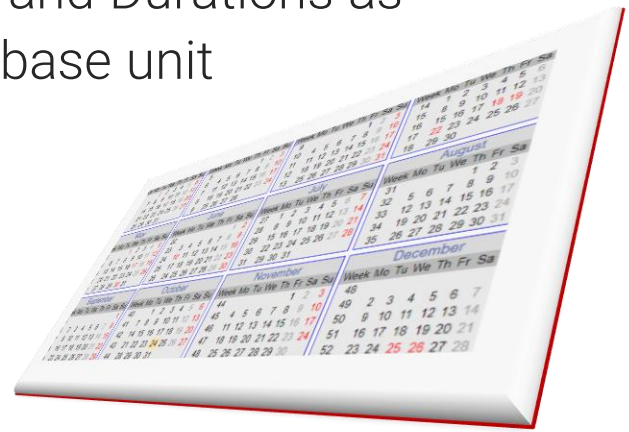
# Calendars

## Primavera P6 Professional (PPM) 18.0.0

- Rest period length in ½ hour intervals; :00 or :30
- Shift lengths, as above
- All calculations are done in minutes
- DataDate, Constraints and Durations may be set to the minute
  - Not recommended, but possible
  - Should be set to :00 or :30 to align with period lengths.

## Safran Project 7.3.1

- Rest periods as per the project base unit; Minute, Hour or Day
- Shift lengths as above
- Calculations respect the project base unit
- Timenow, Constraints and Durations as defined by the project base unit
- = A consistent design.





# P6 does not have anything like these

- **Alternative Schedules**

- Time saving when analyzing different scenarios

- **Change Orders**

- Keeps track of changes, their origins and can demonstrate their effects

- **Open multiple projects in independent windows**

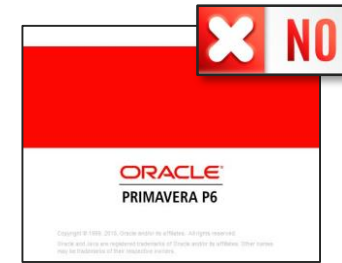
- Great when involved with multiple projects or to analyze scenarios

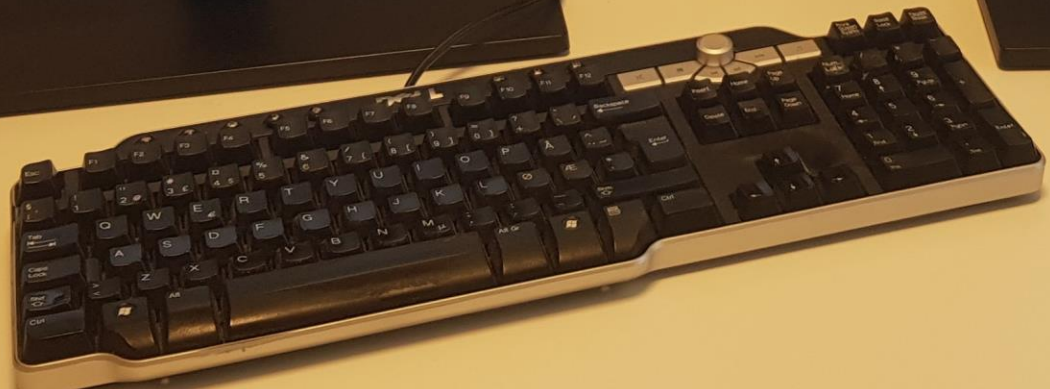
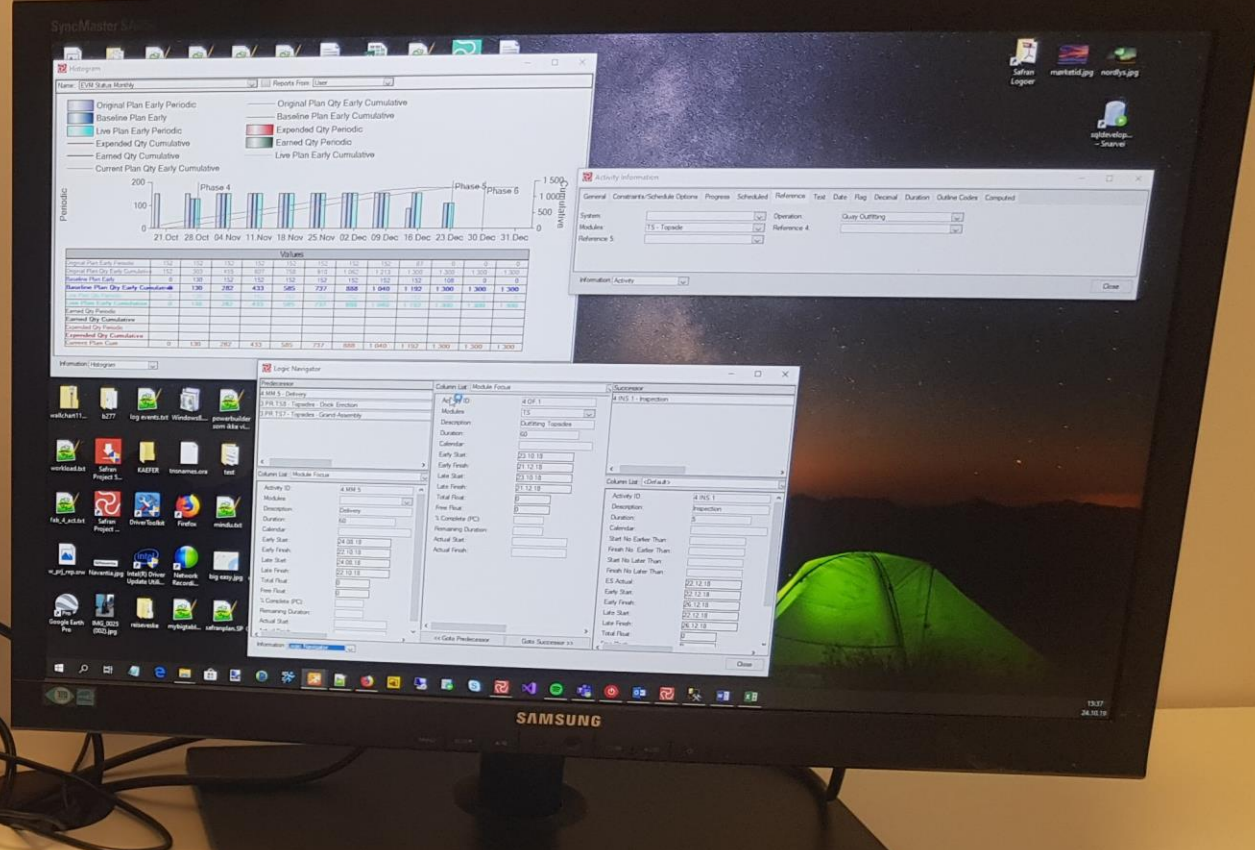
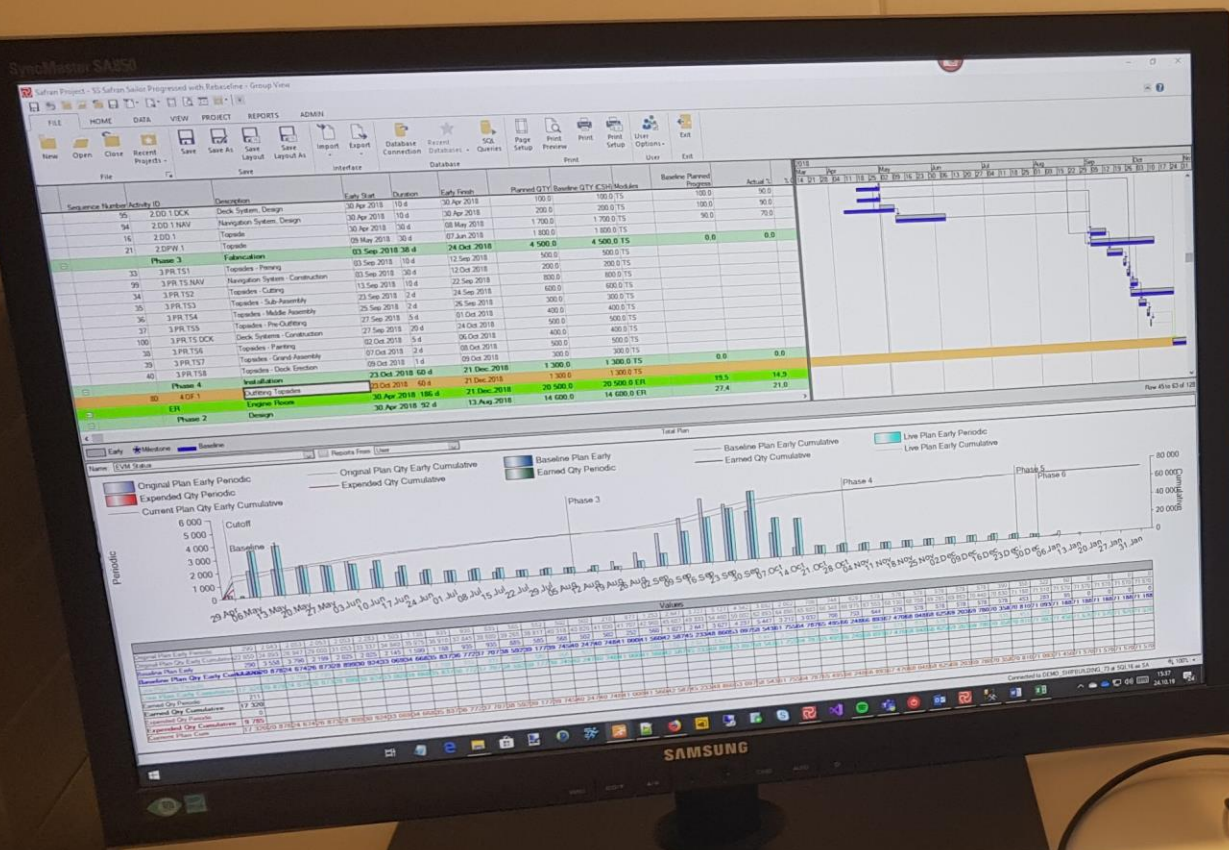
- **Project Groups**

- Great for reporting, leveling against common availabilities, studying different scenarios

- **Undocking windows**

- Fantastic for viewing many aspects simultaneously, huge time-saver.





# Comparing the GUI



- P6: Bar/Symbol configuration; not as comprehensive as in Safran

The screenshot displays the P6 software interface. At the top, a Gantt chart shows a project schedule from Qtr 1, 2010 to Qtr 3, 2012. Below the chart, a 'Bars' dialog box is open, allowing for the configuration of bar styles and labels. The dialog box contains several sections:

- Bar Style Configuration:** A table with columns for Display, Name, Timescale, User Start Date, User Finish Date, Filter, and Preview.
 

Display	Name	Timescale	User Start Date	User Finish Date	Filter	Preview
<input checked="" type="checkbox"/>	Actual Work	Actual Bar			Normal	
<input checked="" type="checkbox"/>	Remaining Work	Remain Bar			Normal and Non-crit	
<input checked="" type="checkbox"/>	Critical Remaining	Remain Bar			Normal and Critical	
<input type="checkbox"/>	Start Constraint	Remain Bar			Has Start Constrai	
<input type="checkbox"/>	Finish Constraint	Remain Bar			Has Finish Constrai	
<input type="checkbox"/>	Baseline Mileston	Primary Baseline E			Milestone	
<input checked="" type="checkbox"/>	Current Bar Labe	Current Bar			Normal or Level of I	
<input checked="" type="checkbox"/>	Milestone	Current Bar			Milestone	
- Bar Labels Configuration:** A table with columns for Position and Label.
 

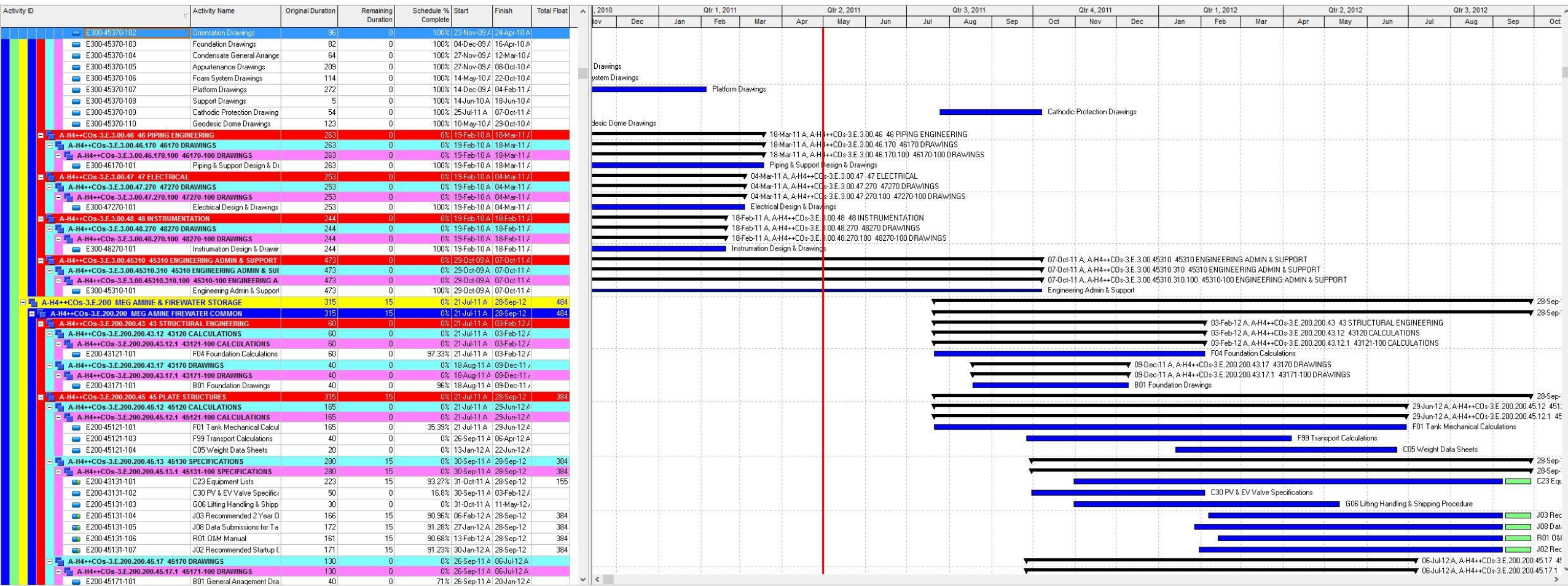
Position	Label
Right	Activity Name
- Control Panel:** A vertical list of buttons on the right side of the dialog, including OK, Cancel, Apply, Add, Delete, Copy From..., Shift up, Shift down, Options..., Default, and Help.

The background Gantt chart shows various project activities with their respective durations and completion percentages. For example, 'Orientation Drawings' is 95% complete, and 'Foundation Drawings' is 82% complete. The chart also displays task dependencies and critical paths.

# Comparing the GUI



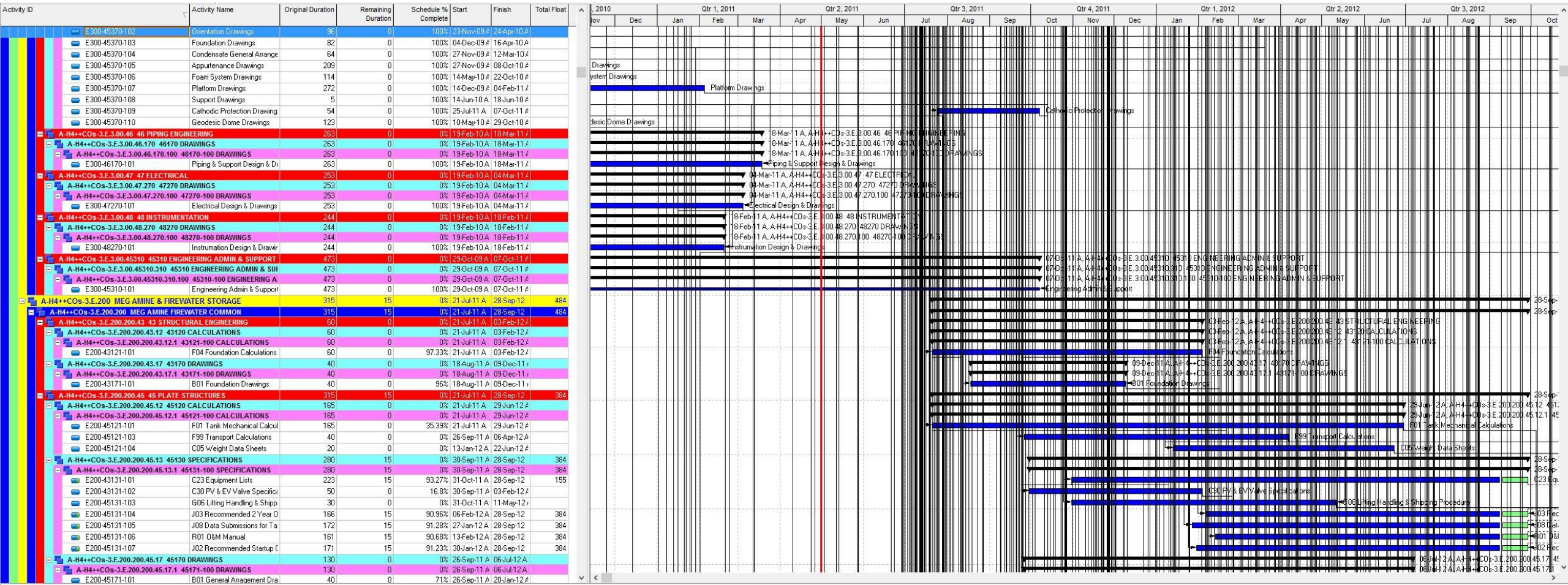
- P6: No links shown, easy to switch Links on...



# Comparing the GUI



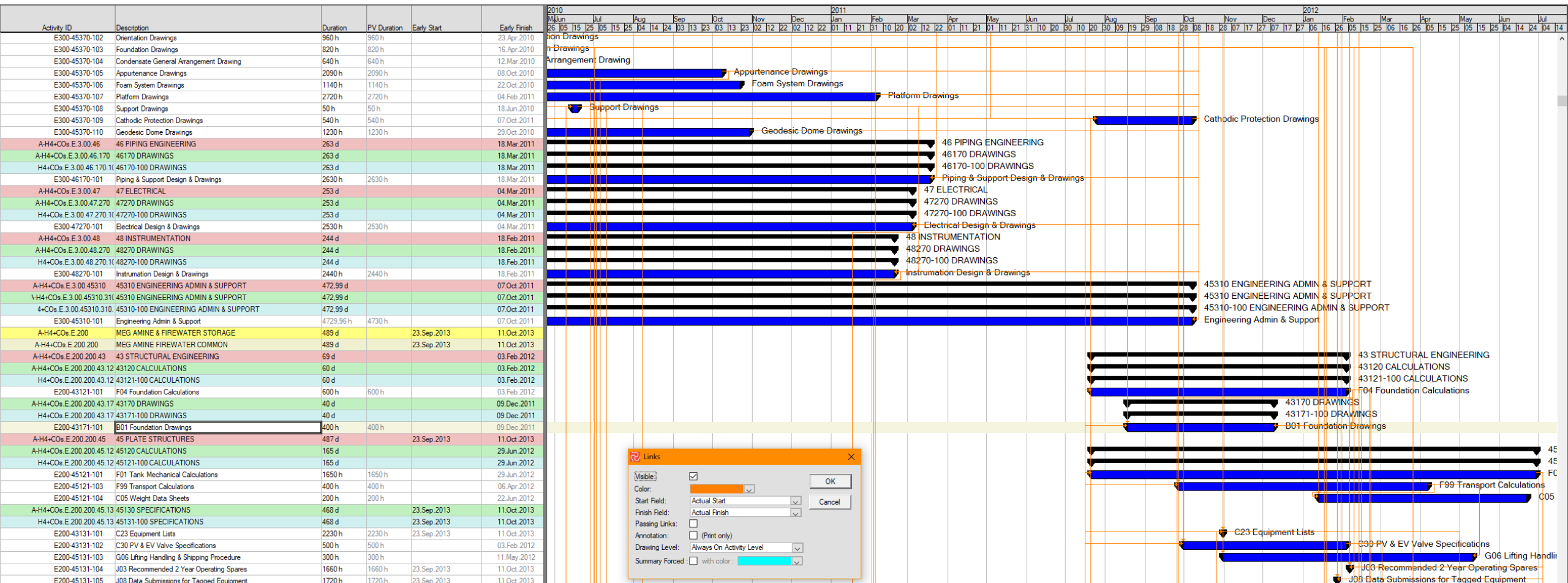
- P6: Links on. Shows also passing links, difficult to read bar chart

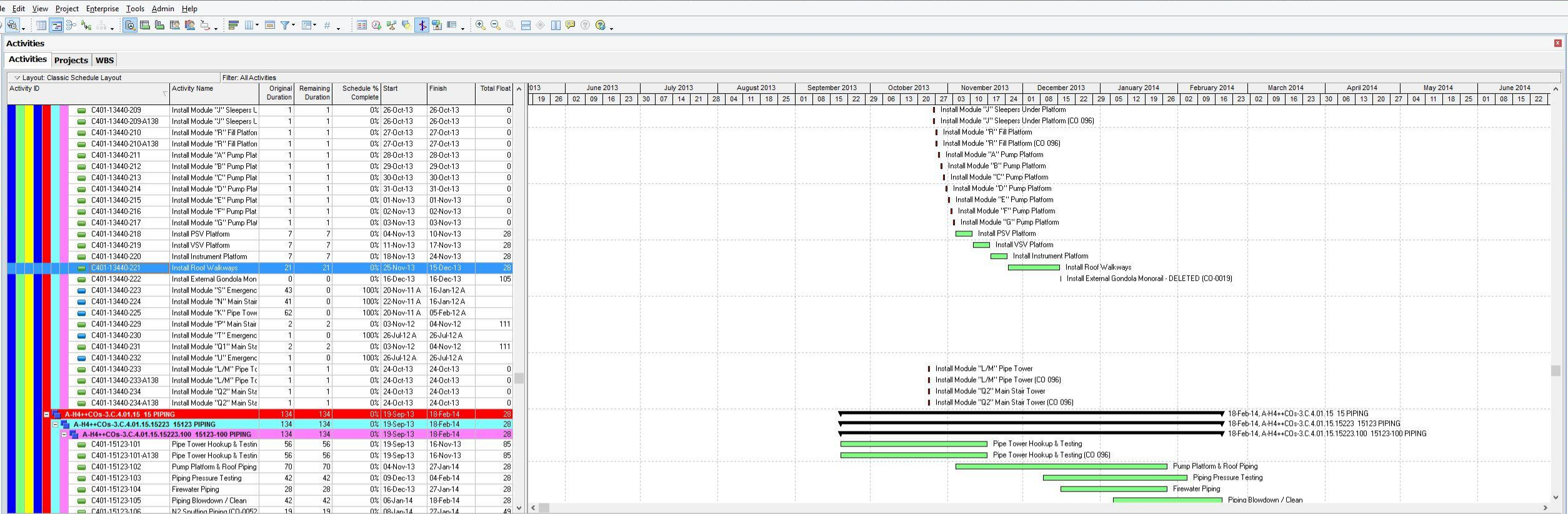


# Comparing the GUI



- Safran: May show only non-passing Links, a lot easier to read



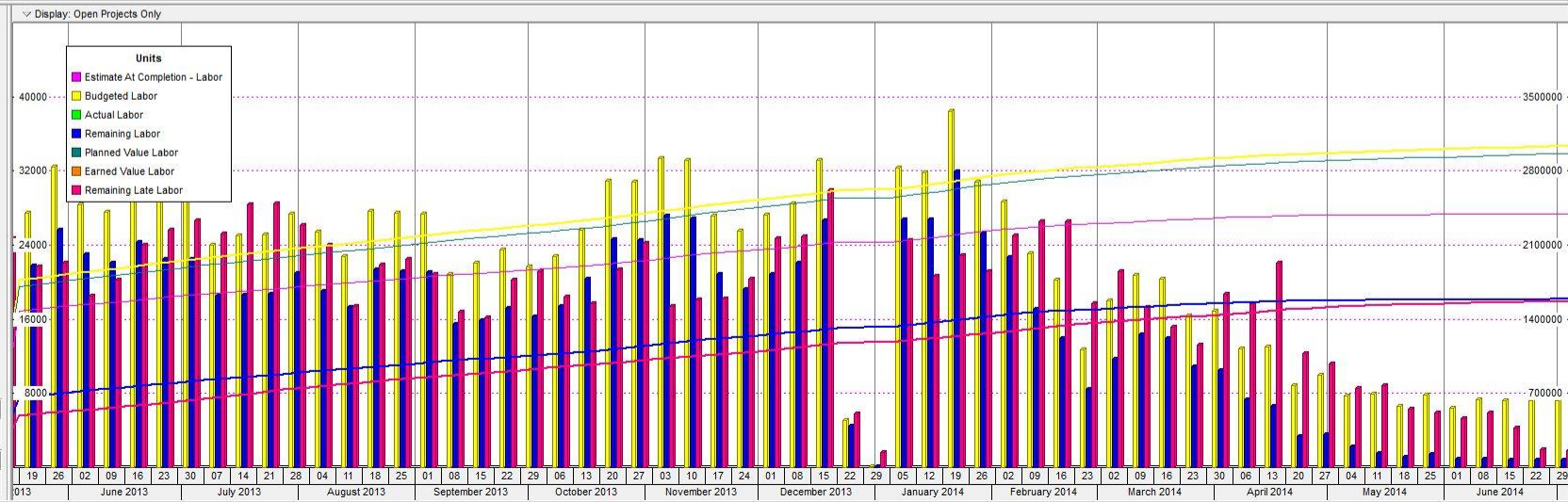


Resource ID Name	Party Resou	Resource	g Units / Time	Original Lag	Start	Finish	Budgeted Units	Actual Regular Units	ning Early Units	Role
19PTH.Site Erec		Labor	99/d	0	25-Nov-13	15-Dec-13	2081	0	2081	Site Erected Plate S
61AUS.Site Proj		Labor	11/d	0	25-Nov-13	15-Dec-13	223	0	223	Site Project Manage

P6:  
 In this area I show the list of resources assigned to the highlighted activity.  
 I also wanted to see the resource histogram I am used to from Safran.  
 Found two options...

Activity ID	Activity Name	Original Duration	Remaining Duration	Schedule % Complete	Start	Finish	Total Float
C401-13440-209	Install Module "J" Sleepers L	1	1	0%	26-Oct-13	26-Oct-13	0
C401-13440-209-A138	Install Module "J" Sleepers L	1	1	0%	26-Oct-13	26-Oct-13	0
C401-13440-210	Install Module "R" Fill Platform	1	1	0%	27-Oct-13	27-Oct-13	0
C401-13440-210-A138	Install Module "R" Fill Platform	1	1	0%	27-Oct-13	27-Oct-13	0
C401-13440-211	Install Module "A" Pump Plat	1	1	0%	28-Oct-13	28-Oct-13	0
C401-13440-212	Install Module "B" Pump Plat	1	1	0%	29-Oct-13	29-Oct-13	0
C401-13440-213	Install Module "C" Pump Plat	1	1	0%	30-Oct-13	30-Oct-13	0
C401-13440-214	Install Module "D" Pump Plat	1	1	0%	31-Oct-13	31-Oct-13	0
C401-13440-215	Install Module "E" Pump Plat	1	1	0%	01-Nov-13	01-Nov-13	0
C401-13440-216	Install Module "F" Pump Plat	1	1	0%	02-Nov-13	02-Nov-13	0
C401-13440-217	Install Module "G" Pump Plat	1	1	0%	03-Nov-13	03-Nov-13	0
C401-13440-218	Install PSV Platform	7	7	0%	04-Nov-13	10-Nov-13	28
C401-13440-219	Install VSV Platform	7	7	0%	11-Nov-13	17-Nov-13	28
C401-13440-220	Install Instrument Platform	7	7	0%	18-Nov-13	24-Nov-13	28
C401-13440-221	Install Roof Walkways	21	21	0%	25-Nov-13	15-Dec-13	28
C401-13440-222	Install External Gondola Mon	0	0	0%	16-Dec-13	16-Dec-13	105
C401-13440-223	Install Module "S" Emergenc	43	0	100%	20-Nov-11 A	16-Jan-12 A	
C401-13440-224	Install Module "N" Main Stair	41	0	100%	22-Nov-11 A	16-Jan-12 A	
C401-13440-225	Install Module "K" Pipe Towr	62	0	100%	20-Nov-11 A	05-Feb-12 A	
C401-13440-229	Install Module "P" Main Stair	2	2	0%	03-Nov-12	04-Nov-12	111
C401-13440-230	Install Module "T" Emergenc	1	0	100%	26-Jul-12 A	26-Jul-12 A	
C401-13440-231	Install Module "Q1" Main Ste	2	2	0%	03-Nov-12	04-Nov-12	111
C401-13440-232	Install Module "U" Emergenc	1	0	100%	26-Jul-12 A	26-Jul-12 A	
C401-13440-233	Install Module "L/M" Pipe Tc	1	1	0%	24-Oct-13	24-Oct-13	0
C401-13440-233-A138	Install Module "L/M" Pipe Tc	1	1	0%	24-Oct-13	24-Oct-13	0
C401-13440-234	Install Module "Q2" Main Ste	1	1	0%	24-Oct-13	24-Oct-13	0
C401-13440-234-A138	Install Module "Q2" Main Ste	1	1	0%	24-Oct-13	24-Oct-13	0
A-H4++COs-3.C.4.01.15 15 PIPING		134	134	0%	19-Sep-13	18-Feb-14	28
A-H4++COs-3.C.4.01.15.15223 15123 PIPING		134	134	0%	19-Sep-13	18-Feb-14	28
A-H4++COs-3.C.4.01.15.15223.100 15123-100 PIPING		134	134	0%	19-Sep-13	18-Feb-14	28
C401-15123-101	Pipe Tower Hookup & Testin	56	56	0%	19-Sep-13	16-Nov-13	85
C401-15123-101-A138	Pipe Tower Hookup & Testin	56	56	0%	19-Sep-13	16-Nov-13	85
C401-15123-102	Pump Platform & Roof Piping	70	70	0%	04-Nov-13	27-Jan-14	28
C401-15123-103	Piping Pressure Testing	42	42	0%	09-Dec-13	04-Feb-14	28
C401-15123-104	Firewater Piping	28	28	0%	16-Dec-13	27-Jan-14	28
C401-15123-105	Piping Blowdown / Clean	42	42	0%	06-Jan-14	18-Feb-14	28
C401-15123-106	N2 Sulfation Pinion (CO-0052	19	19	0%	08-Jan-14	27-Jan-14	49

Expected the resource list here



Show Usage for

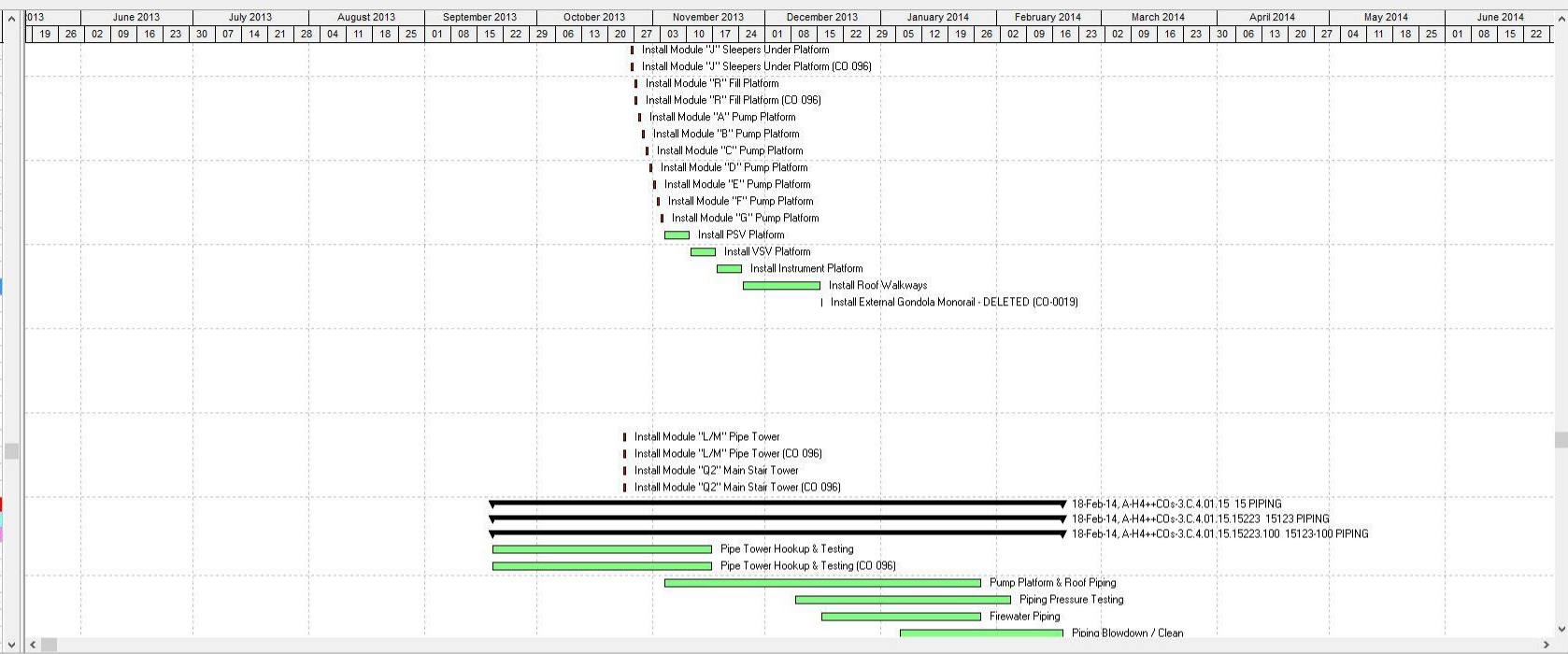
All activities  Selected activities

Display Activities for selected...

Time Period



Activity ID	Activity Name	Original Duration	Remaining Duration	Schedule % Complete	Start	Finish	Total Float
C401-13440-209	Install Module "J" Sleepers L	1	1	0%	26-Oct-13	26-Oct-13	0
C401-13440-209-A138	Install Module "J" Sleepers L	1	1	0%	26-Oct-13	26-Oct-13	0
C401-13440-210	Install Module "R" Fill Platform	1	1	0%	27-Oct-13	27-Oct-13	0
C401-13440-210-A138	Install Module "R" Fill Platform	1	1	0%	27-Oct-13	27-Oct-13	0
C401-13440-211	Install Module "A" Pump Plat	1	1	0%	28-Oct-13	28-Oct-13	0
C401-13440-212	Install Module "B" Pump Plat	1	1	0%	29-Oct-13	29-Oct-13	0
C401-13440-213	Install Module "C" Pump Plat	1	1	0%	30-Oct-13	30-Oct-13	0
C401-13440-214	Install Module "D" Pump Plat	1	1	0%	31-Oct-13	31-Oct-13	0
C401-13440-215	Install Module "E" Pump Plat	1	1	0%	01-Nov-13	01-Nov-13	0
C401-13440-216	Install Module "F" Pump Plat	1	1	0%	02-Nov-13	02-Nov-13	0
C401-13440-217	Install Module "G" Pump Plat	1	1	0%	03-Nov-13	03-Nov-13	0
C401-13440-218	Install PSV Platform	7	7	0%	04-Nov-13	10-Nov-13	28
C401-13440-219	Install VSV Platform	7	7	0%	11-Nov-13	17-Nov-13	28
C401-13440-220	Install Instrument Platform	7	7	0%	18-Nov-13	24-Nov-13	28
C401-13440-221	Install Roof Walkways	21	21	0%	25-Nov-13	15-Dec-13	28
C401-13440-222	Install External Gondola Mon	0	0	0%	16-Dec-13	16-Dec-13	105
C401-13440-223	Install Module "S" Emergenc	43	0	100%	20-Nov-11 A	16-Jan-12 A	
C401-13440-224	Install Module "N" Main Stair	41	0	100%	22-Nov-11 A	16-Jan-12 A	
C401-13440-225	Install Module "K" Pipe Towr	62	0	100%	20-Nov-11 A	05-Feb-12 A	
C401-13440-229	Install Module "P" Main Stair	2	2	0%	03-Nov-12	04-Nov-12	111
C401-13440-230	Install Module "T" Emergenc	1	0	100%	26-Jul-12 A	26-Jul-12 A	
C401-13440-231	Install Module "Q1" Main Ste	2	2	0%	03-Nov-12	04-Nov-12	111
C401-13440-232	Install Module "U" Emergenc	1	0	100%	26-Jul-12 A	26-Jul-12 A	
C401-13440-233	Install Module "L/M" Pipe Tc	1	1	0%	24-Oct-13	24-Oct-13	0
C401-13440-233-A138	Install Module "L/M" Pipe Tc	1	1	0%	24-Oct-13	24-Oct-13	0
C401-13440-234	Install Module "Q2" Main Ste	1	1	0%	24-Oct-13	24-Oct-13	0
C401-13440-234-A138	Install Module "Q2" Main Ste	1	1	0%	24-Oct-13	24-Oct-13	0
A-H4++COs-3.C.4.01.15 15 PIPING		134	134	0%	19-Sep-13	18-Feb-14	28
A-H4++COs-3.C.4.01.15.15223 15123 PIPING		134	134	0%	19-Sep-13	18-Feb-14	28
A-H4++COs-3.C.4.01.15.15223.100 15123-100 PIPING		134	134	0%	19-Sep-13	18-Feb-14	28
C401-15123-101	Pipe Tower Hookup & Testin	56	56	0%	19-Sep-13	16-Nov-13	85
C401-15123-101-A138	Pipe Tower Hookup & Testin	56	56	0%	19-Sep-13	16-Nov-13	85
C401-15123-102	Pump Platform & Roof Piping	70	70	0%	04-Nov-13	27-Jan-14	28
C401-15123-103	Piping Pressure Testing	42	42	0%	09-Dec-13	04-Feb-14	28
C401-15123-104	Firewater Piping	28	28	0%	16-Dec-13	27-Jan-14	28
C401-15123-105	Piping Blowdown / Clean	42	42	0%	06-Jan-14	18-Feb-14	28
C401-15123-106	N2 Sulfation Purison (CO-0052)	19	19	0%	08-Jan-14	27-Jan-14	49



Expected the resource list here

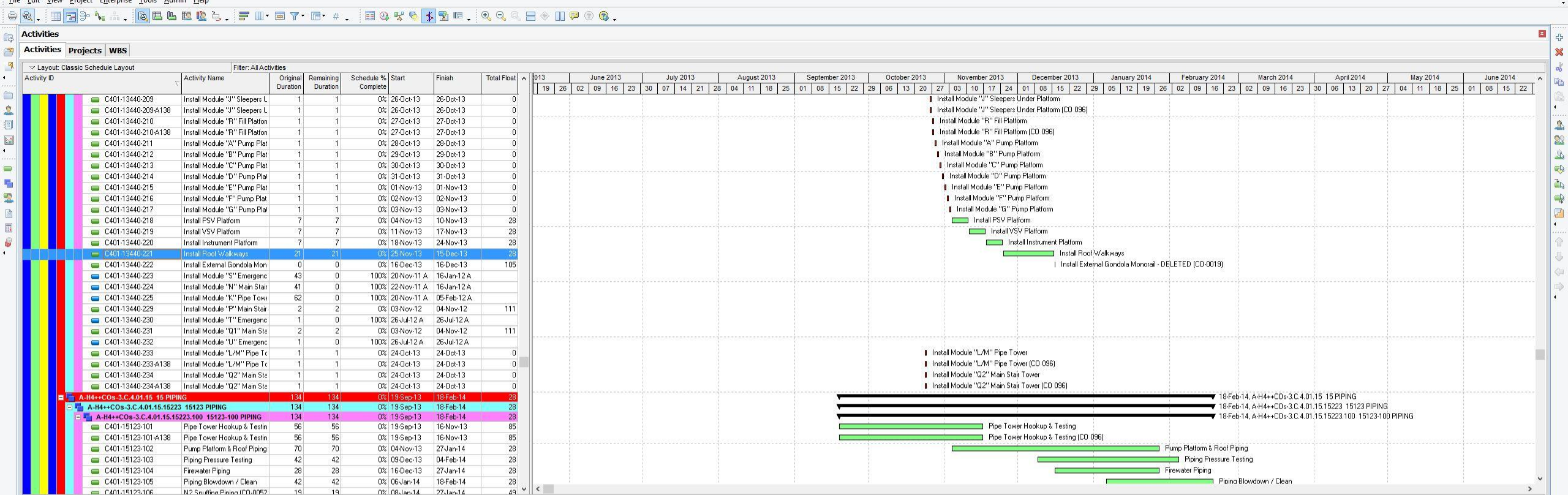
A certain amount of configurations are available, far from what is available in Safran.

Show Usage for

All activities  Selected activities

Display Activities for selected...

Time Period



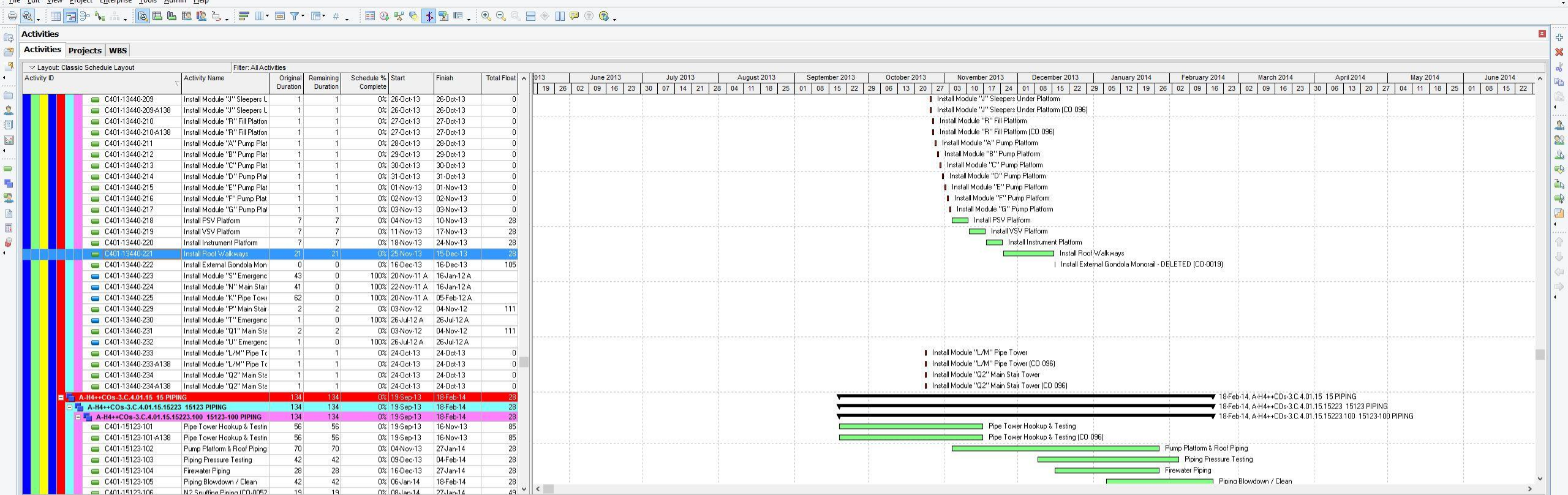
General Status Resources Predecessors Successors

Activity: E300-45370-107

Activity ID	Activity Name	Relations	Lag	Activity Status	Primary Resource
E300-45370-107	Platform Design	SS	20	Completed	

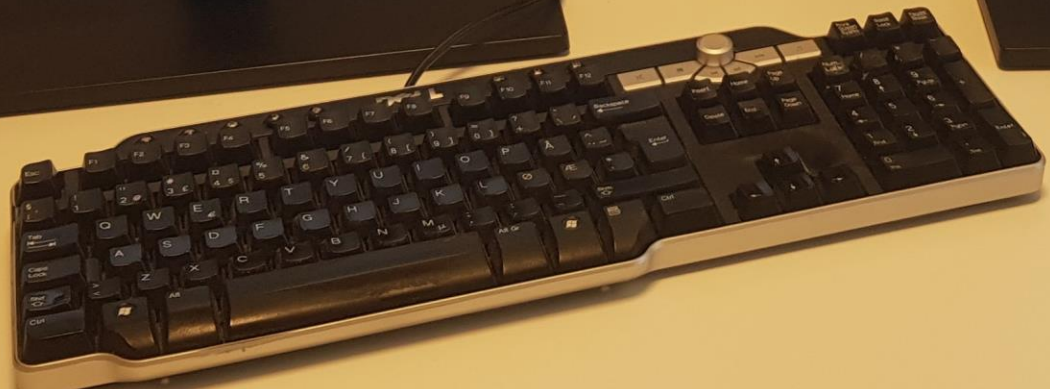
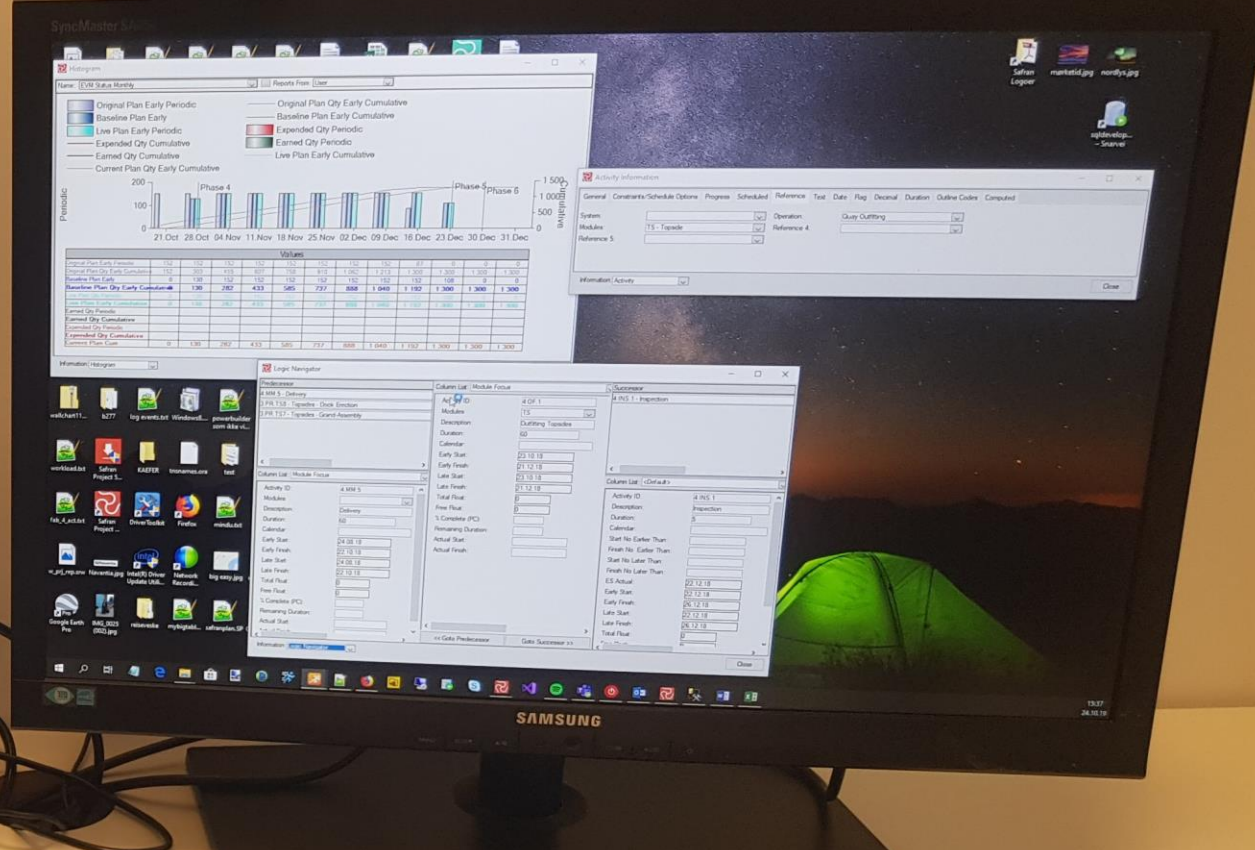
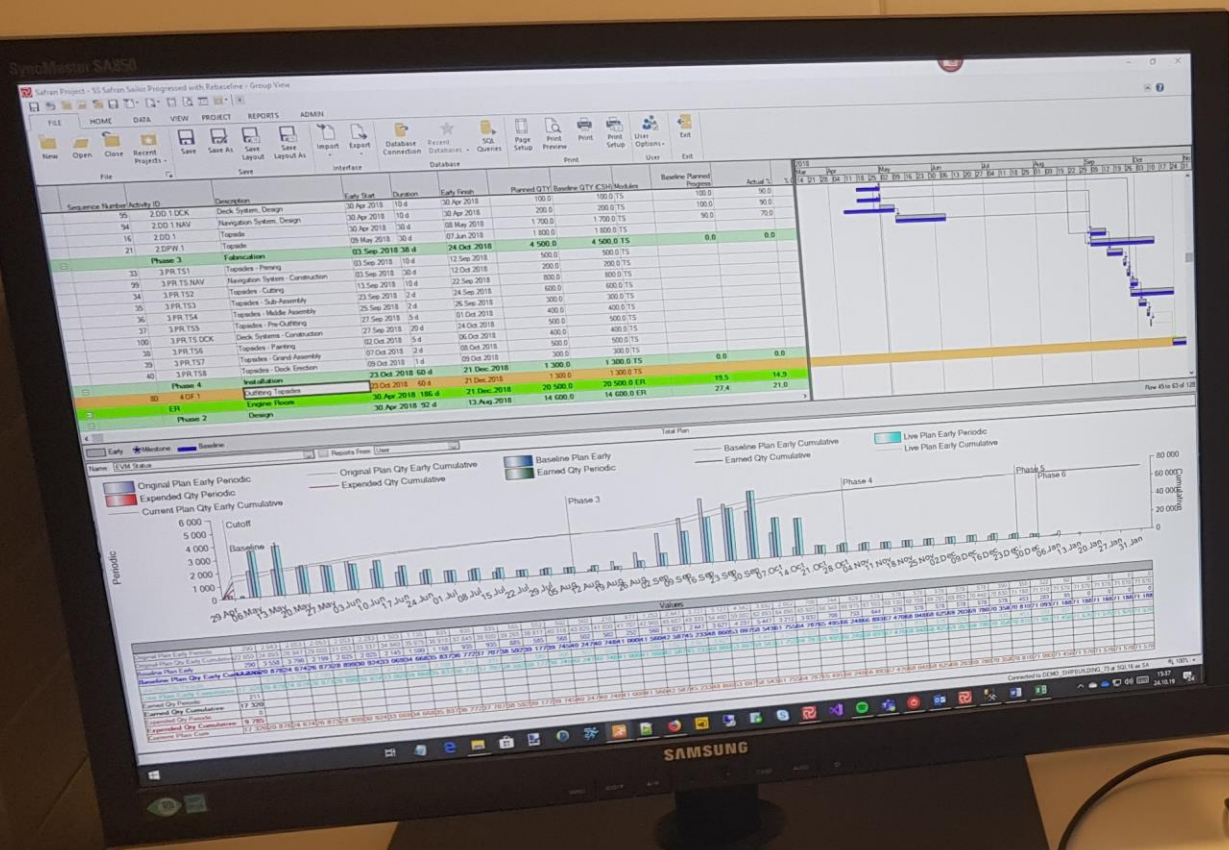
Assign Remove GoTo

P6:  
Can display Predecessors OR Successors, not both at the same time!



Activity ID	Activity Name	Relations	Lag	Activity Status	Resource Name
C301-13211	Gaugers Platform & Pole	FS	0	Not Started	
E300-45310	Engineering Admin & Support	FF	0	Completed	
E300-45310	Engineering Admin & Support	SS	0	Completed	
E300-45370	Support Drawings	SS	0	Completed	
P300-13210	Purchase - Gauge Pole & Platform	SS	55	Completed	
P300-13210	Purchase - Spiral Stairway	SS	0	Completed	

P6:  
Can display Predecessors OR Successors, not both at the same time!



# Summary

- Safran is better!



Thank you