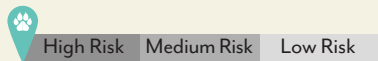




HEARTWORM DISEASE

INFECTED STATES



OF INFECTED



LIFESPAN



Heartworms live up to **5-7 years** in untreated dogs.

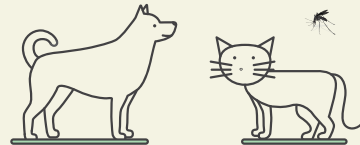
SEASON



Heartworm season is year-round.

INFECTION RATE

1 bite is all it takes to infect your pet with the disease.



22

different mosquito species in the U.S. that carry **Heartworm**.

PREVENTION



⊕ Heartworm prevention is much less expensive than treatment.

15x Treatment can cost more than 15x that of a year's worth of preventative.

⊕ Dogs should be tested every **12 months**.