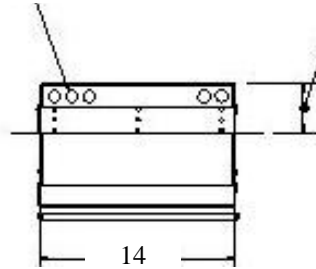




Model Number: SSH4480MS

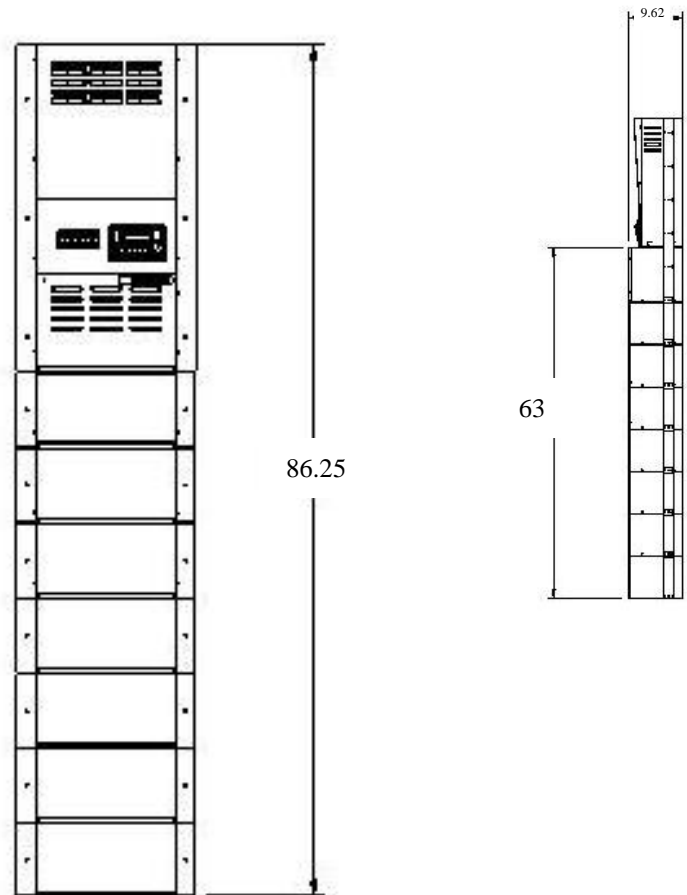
5 knockouts for cable connectors

Mounting flange can be located for flush or inset mounting (0 to 3-1/2")



Specifications:

| | |
|---------------------------|---------------------------------|
| Electrical Input | 120/240 volt 20 Amps per Leg |
| Electrical Output (watts) | 4400 |
| Surge Output | 8500 watts |
| Electrical Output (volts) | 120/240 Volts |
| Battery Capacity | 800 amp hours |
| Number of Breakers | 4 - 20 amp |
| Waveform | Pure Sine |
| Physical Size | 14 x 86.25 x 9.62 |
| Approx. Shipping Weight | 825 lbs |



MEDI+PRODUCTS

BACK-UP POWER SYSTEMS

Products by Medicanix

30 Nurney Street
Stamford, CT 06902
203-348-2886 ph
203-487-7423 fax
www.mediproducts.net
sales@mediproducts.net