

# Equipment List



 HEIDELBERG



FUJIFILM



# Premedia

## Hardware

- (2) HP Proliant Servers
  - DL 360 G6 in a Cluster Environment
- DH4824 Dot Hill 20TB Assured SAN
- DH332 Dot Hill 20TB Assured SAN
- Amazon S3 Cloud Storage
- (5) Mac Mini's
- (5) iMac
- (4) HP PC
- (4) Rampage Ripping Systems (Satellites)
- (2) Rampage (Shooters)
- (2) Epson Sure Color P9000 Color Proofer
- (1) Epson 9800 Digital Color Proofer
- Hyphen Impo Proof 8200 (Cannon Digital Dylux)
- 11 x 17 Laser Printer (1200 dpi)
- Fuji Javelin 8800 Thermal Platesetter
- T-1 Line
- CD-Rom Drives
- CD-Rom Writers
- Secure FTP Site – [www.marekgroup.com](http://www.marekgroup.com)  
(Click "FTP Login")
- HP DL 580 G7 Server (Running Multiple Virtual Server Environments)
- HP DL 380 G9 Server (XMPie Server)

## **Premedia**

### **Software**

- Triptych Software
- Fuji XMF Workflow Automation
- Enfocus Switch
- EFI Metrix
- Kodak Preps
- Oris Color Tuner/Web
- Adobe InDesign
- QuarkXpress
- Adobe Photoshop
- Adobe Illustrator
- PowerPoint
- CorelDraw
- Microsoft Word
- Microsoft Publisher
- Microsoft Excel
- Adobe Acrobat (with Enfocus Pitstop Desktop)
- Enfocus Pitstop Server
- Callas PDF Toolbox Desktop
- Callas PDF Toolbox Server
- Stuff-it
- Zip-it
- Adobe Font Library
- Clip-Art Libraries
- Stock Photo Libraries
- Logo Libraries
- Heidelberg Prepress Interface

### **Variable Data**

- PageFlex Persona Cross Media Suite
- Adobe InDesign Server
- XMPie uProduce Server
- XMPie uDirect, uPlan, ulmage and uChart

### **Quality Control**

- Fuji Colorpath

### **Color Management**

- Xrite i1 Profiler
- Techkon Spectrodens
- Xrite 528 Spectrophotometer

## IT Programming Highlights:

### • Internet

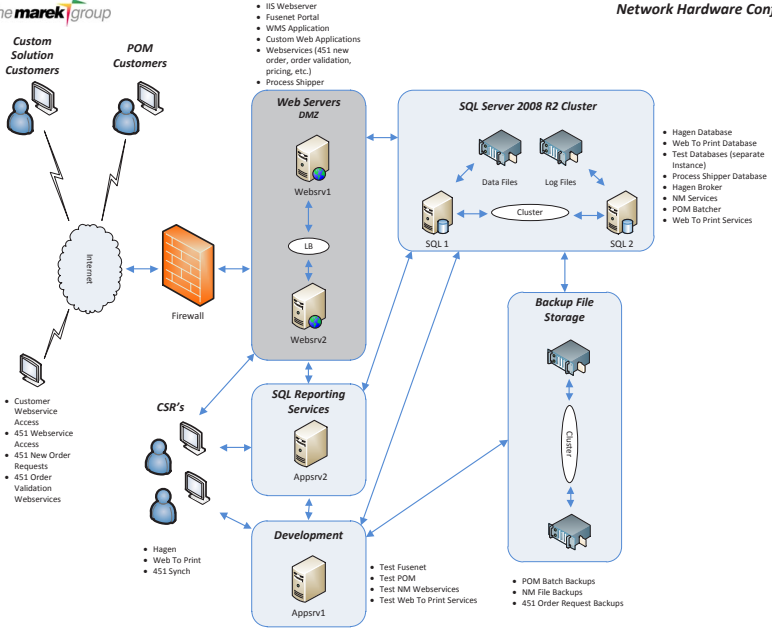
- Languages: C#, Visual Basic.NET, ASP.NET, Java, ASP, XML, XSLT, HTML, CSS, T-SQL, SQL, PL/SQL, C++, C, VB Script, Javascript, XHTML
- Webservices: Simple and complex webservices using Restful, SOAP, or WCF service architectures.

### • Integrations

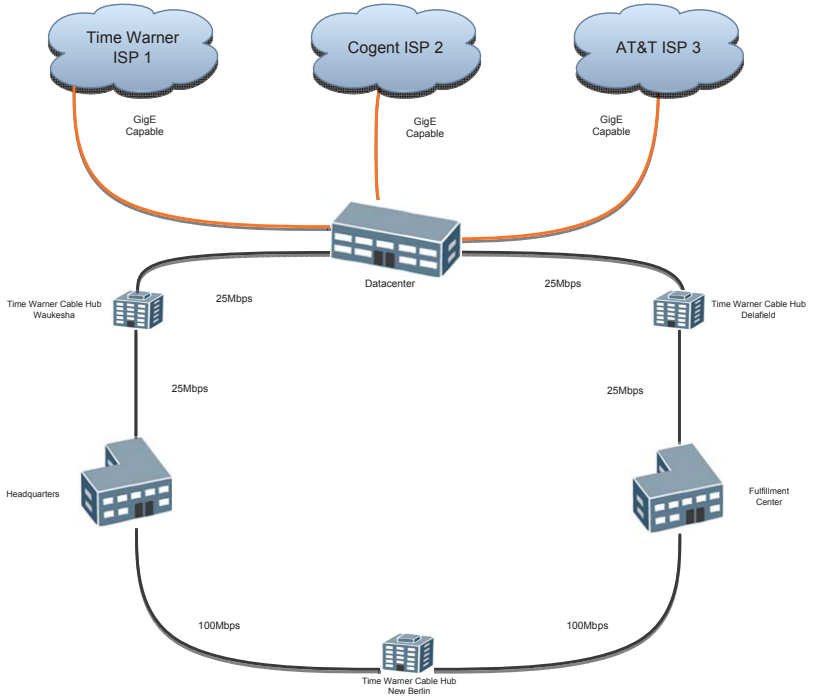
- Languages: C#, Visual Basic.NET
- Applications: Batch programs, Windows Services, Timed Services, Webservices
- Single and multi-threaded applications designed to most efficiently perform large complex tasks.
- File Transfer experts (PGP, FTP, SFTP, HTTP)
- Dynamic PDF document creation

### • Reporting

- SQL Reporting Services



Metro Area Network  
w/ Redundant Internet Connectivity



Datacenter ISP pipes are  
25Mbps burstable for internet connectivity

## **Digital Printing (Hardware)**

- HP Indigo 12000 - 29" 6 Color + White
- Xerox Nuvera 144 with Watkiss Booklet Maker
- Xerox Nuvera 144
- Xerox D136 with Special In-Line Folding
- Acuity Select HS 38 - 96" Flatbed  
6 Color + White UV Inkjet
- Acuity LED 320OR - 128" Roll Or 2-Up 60" Rolls  
4-Color LED UV Inkjet
- Mutoh 1638x Eco Solvent 4-color 64" Roll Fed
- Onyx Production House RIP

## **Digital Printing (Software)**

- Xerox Process Manager Workflow Automation
- Xerox Makeready

## **Offset Printing**

- (2) 40" 6 Color Heidelberg Speedmaster CD 102  
Presswith Aqueous Coating
- 20" 6 Color Heidelberg Speedmaster SM 52 Press  
with Aqueous Coating
- 40" 2 Color Heidelberg SM 102 Press with  
Perfecting Capabilities
- 18" 2 Color Heidelberg QM-46 Printmaster

## **Coating Systems**

- Epic CT-660 Flood & Spot UV Coating System
- ProTech Laminater 54" Cold Laminater
- In-Line Aqueous Coating & Varnish

## **Laser Engraving**

- Vyteck F/X2 24" x 36" Laser Engraver

## General Bindery

- (2) Automated Polar Computerized Cutting System
- (4) Polar Computerized Cutters
- Kansa Automatic Padding Machine
- Graphic Wizard-Score/Perf/Slit
- (4) Challenge Drills with 5 Drill Heads
- Double Round Corner Machine
- Skid Wrappers and Scales
- (2) Mosca High Speed Automatic Strapping Machines
- (2) Film Laminators 12 and 25 inches
- Custom Carton Label Printer
- Custom Bar Code Label Printer
- Multiple Shipping Terminals (UPS, FedEx, DHL)
- Felins Paper Bander US-2000

## Folding

- 24 x 29 Kluge Unifold Automatic Folder/Gluer
- 26 x 40 Heidelberg Stahl Folder with 32 Page and Gatefold Attachments
- (2) 26 x 40 Heidelberg Stahl USA B26-4/4/4 Continuous Feed Folder
- 32 x 40 Heidelberg Stahl USA TF 4/4/4 Continuous Feed Folder with score & slit
- (2) Heidelberg Stahl Vertical Stackers
- Portable Knife and Re-Fold Attachments - Used with all folders
- (2) 20 x 30 Heidelberg Stahl B 4/4 Pile Feeder

## Book Binding

- Heidelberg Stitchmaster ST-400 7 Pocket + Cover Feeder with refold attachment, stacking system, and Loop Stitch attachment
- Standard Horizon Speed Vac 100 - 30 Station Tower Collator
- (2) Fastback Model 15x Document Tape Binding Systems
- (3) Hand Stitchers
- GBC Comb Binding System
- Watkiss PowerSquare Booklet Maker
- Fenimore 258 Punch 3-Hole and Calendar Attachment



## Die Cutting

- Esko Kongsberg C60 Automated Wide Format Cutting & Routing
- Heidelberg SBG Cylinder
- Heidelberg SORS Rotary Die Cutter
- CITO System for Inline Perfin/Scoring & Diecutting for Heidelberg SM-52 & CD-102 Presses
- Mimaki CG-160 FX Cutting Plotter

## Packaging

- AB255 Horizontal Auto-Bagger and Printer
- (3) Eastey Shrinkwrap Machines
- Shanklin Shrinkwrappers
- (4) 3M Matic 200 A Case Sealers
- (12) Conveyors for Hand Assembly

## Direct Mail/Lettershop

- (2) Videojet 2.02.0 Netjets
- Scitex 5120 Inkjet
- (2) VideoJet Printmail Wide Array 7000 Inkjet
- Flowmaster Six Station Camera Match High Speed Inserter
- Bell and Howell 6 pocket inserter with Camera Match System
- Bell and Howell 4 pocket inserter
- Pitney Bowes PS150 5 pocket oversize (9" x 12") inserter
- Pitney Bowes 6 pocket letter inserter with inline metering
- (2) Cheshire high speed tabbing machine
- (5) Kirk Rudy high speed tabbing machine
- Kirk Rudy Cheshire labeler
- Robatech Fugitive gluing system
- Tab Burster 2540 series
- Bell & Howell BCC Mail Manager presort software
- Hasler meter
- Onsite USPS Detached Mail Unit
- Monticello Software Suite
- Commingling
- Co-Palletization
- Co-Mailing
- Drop-Shipping

## Fulfillment Capabilities

- 120,000 Square Foot Fulfillment Center
- Fully Integrated Fuse Warehouse Management System
- Automated Location and Product Bar Code System
- Wi-fi Handheld Scanners for Q/A Picking Process
- Triptych Integration Software for Custom Fulfillment Ordering
- Custom Bar Code Label Printers
- Multiple Location Ordering Via Internet, E-Mail, Fax
- Real-time Shipping Integration FedEx, UPS, USPS, LTL
- Shipments Made Within 24 Hours After Receiving Order
- Premium Kit Fulfillment
- Sampling Programs
- Rebate Fulfillment
- Postal & Freight Optimization



**Headquarters**

W228 N821 Westmound Drive  
Waukesha, WI 53186  
262.549.8900

**Minneapolis**

6625 W. 78th Street, Suite 260  
Bloomington, MN 55439  
952.345.7260

**Fulfillment Center - August 2018**

N17 W25073 Bluemound Rd.  
Pewaukee, WI 53072