



# Sentinel<sup>®</sup> Safety

*Increase your safety factor.*



**OVERSIZE**



Free Phone: 0508 31 31 31 | Free Fax: 0508 41 41 41 | Email: [sales@transquip.co.nz](mailto:sales@transquip.co.nz) | Web: [www.transquip.co.nz](http://www.transquip.co.nz)

Christchurch: 2 Edmonton Road, Hornby 8042 | Auckland: Unit 29, 761 Great South Road, Penrose 1061

# LED Barlights

## Micro LED Barlights - 9902 Series

**The Original  
Micro Barlight!**  
Tried & tested  
5 year warranty\*



**#9902-M**  
Magnetic Mount



**#9902-4**  
Permanent 4 Bolt Mount



**#9902-1**  
Single Bolt Mount

Part No	Mounting Type	Lense Colour	Size
#9902-1	Permanent Single Mount	Clear	248mm long x 172mm wide x 37mm high
#9902-1A	Permanent Single Mount	Amber	
#9902-4	Permanent 4 Bolt Mount	Clear	
#9902-4A	Permanent 4 Bolt Mount	Amber	
#9902-M	Magnetic Mount	Clear	
#9902-MA	Magnetic Mount	Amber	

**#9887**  
Rack Mount for 9902



This info applies to 9902, 9903 and 9904 series:

- All SAE Class 1, EMC, R65, CISPR 15 compliant
  - Radio interference free
  - Top quality barlights you can fit and forget!
  - Save your battery! Very low current draw!
  - Save your fuel! You can leave these flashing without leaving your vehicle's engine idling
  - Multi Voltage: 12 and 24 volt
  - Amber LED's when activated
  - Many different flash patterns
  - Tough polycarbonate lens
  - Permanent or magnetic mounting options, (brackets included with permanent mount options)
  - Can be synchronised to flash together
  - Low profile to reduce wind drag, and smart looking
  - Water and vibration resistant
- (\* conditions apply)

# LED Barlights

## Micro LED Barlights - 9903 Series



**#9903 MC**  
Magnetic Mount



**#9903 PA**  
Permanent Mount

Part No	Mounting Type	Lense Colour	Size
#9903 PA	Permanent Mount	Amber	400mm long x 172mm wide x 37mm high
#9903 PC	Permanent Mount	Clear	
#9903 MA	Magnetic Mount	Amber	
#9903 MC	Magnetic Mount	Clear	

## LED Barlights - 9904 Series

**#9904 MC**  
Magnetic Mount



**#9904 PA**  
Permanent Mount



Part No	Mounting Type	Lense Colour	Size
#9904 PA	Permanent Mount	Amber	355mm long x 205mm wide x 53mm high
#9904 PC	Permanent Mount	Clear	
#9904 MA	Magnetic Mount	Amber	
#9904 MC	Magnetic Mount	Clear	

# LED Barlights

## LED Barlights - 9892 Series



#9892-4A



#9892-4

Part No	Mounting Type	Lense Colour	Size
#9892-2	2 Bolt Permanent Mount	Clear	420mm long x 160mm wide x 75mm high
#9892-2A		Amber	
#9892-4	4 Bolt Permanent Mount	Clear	
#9892-4A		Amber	
#9892-M	Magnetic Mount	Clear	
#9892-MA		Amber	

## Large LED Barlights

#9057A Amber Lens

#9057C Clear Lens

694mm long x 305mm wide x 121mm high (including mounts)



#9058A Amber Lens

#9058C Clear Lens

1194mm long x 305mm wide x 121mm high (inc mounts)

- High intensity LED's
- Two sizes available
- Permanent mount brackets included
- SAE class 1 standard
- Tough polycarbonate base and lens
- Waterproof IP67 rating
- Multivolt
- Amber LED's

## LED Amber/Magenta Barlights



#9053



- **For Pilot Vehicles**
- Waterproof and EMI free
- Purple and Amber independently switched
- Multi-volt
- Low profile alloy housing
- 360° light output
- 15 flashing patterns
- Digital in-cabin control box
- Size 1035mm long x 110mm wide
- Also smaller magnetic option available for utes

# Night Safety Light

## Solar Powered Night Safety Light



### #9517

- IP67 waterproof
- Size: 105mm x 105 mm x 23mm
- Up to 72 hours continual light from full charge



- Ideal for night marker lights
- 12 month warranty
- New Zealand Designed
- Safety Compliant
- Robust, durable, built to last
- Will fit to: trucks, trailers, diggers, farm machinery, mini skips and MORE!



### #9518

- IP68 waterproof
- Size: 137mmL x 33mmW x 50mmH
- Various mounting options
- Up to 100 hours continual light from a full charge



# LED Beacons

## LED Beacons



#9731



#9733

- LED quality beacon
- 10V-36V
- Reverse polarity
- 13 flash patterns
- ECE R65
- ECE R10



#9732

Part No	Mounting Type	Size
#9731	Permanent	148mm Ø x 138mm high
#9732	Magnetic	148mm Ø x 138mm high
#9733	Flexi Pole Mount	116mm Ø x 193mm high

## LED Beacons



#9760

- High Intensity 3 Watt LEDs - Very bright!
- SAE Class 1 and ECE R65 Compliant
- Tough alloy base
- Rotating flash patterns
- Multivolt, very low current draw

Part No	Mounting Type	Size
#9760	Permanent	164mm Ø x 137mm high

## Economy Beacons



#9080



#9081



#9085

### #9080

- Single bolt permanent mount - fit and forget
- Multi-voltage; 10-30 Volt
- Size 125mm high x 120mm diameter

### #9081

- Magnetic mount with coiled cord and cigarette lighter plug
- Multi-voltage 10-30 Volt
- 125mm high x 120mm diameter

### #9085

- 30 LEDs
- Multi-voltage; 10-80 Volts
- Permanent mount
- Compact size - 95mm high x 90mm diameter

# LED Beacons

## LED Class 2 Beacons



**#9088**

- 10 flash patterns
- Size 53mm high x 130 mm diameter

- 10 – 30 Volt
- Surface mount
- ECE R10 (EMC)/SAE CLASS 2
- Waterproof IP 67
- Current – Average 6W, peak 10W



**#9089**

- 3 flash patterns
- Size 96mm high x 130mm diameter

## Battery Powered LED Beacon



**#9157**

- For convenient, portable lighting!
- Low current draw, 100+ hours of battery life
- Includes inbuilt light sensor, on/off weatherproof switch
- Magnetic base, heavy duty cord to suspend strobe if necessary
- Requires 2 x D size batteries (not supplied)



**#9167**

- Fits on the top of a cone with a flat top to sit a 9157 LED portable strobe

## LED Strobe light



**#9132**

- LED strobe beacon, ideal size for forklifts with tough amber polycarbonate lens.
- Single flash pattern. 12 - 110 Volts.
- Mounting Type - Permanent mount
- Size - 130mm high x 72mm diameter (base)

## Beacon Mounting Accessories



**#9150**



**#9152**



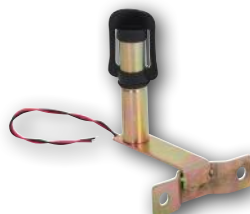
**#9153**



**#9151**



**#9155**



**#9154**

+ more accessories available!

# Directional LED Flashing Lights

## Amber LED Light Heads



- Excellent quality - meets many standards
- Make sure your vehicles are being seen - very bright high intensity LEDs
- Multi volt 11-30 VDC
- These can be synchronised - connect multiple heads to flash together
- 17 flash patterns and 2 steady burn
- Tough, weather-proof & vibration resistant
- Save your battery & your fuel, very low current draw

**#9880U** "U" shaped bracket

**#9880L** "L" shaped bracket

"L" bracket

## Grille or Window Mounted Flashing Lights



**#9126**

**#9125**

**#9125** Amber

**#9126** Magenta

**#9127** Red

**#9125B** Blue

**#9125G** Green

**#9127RW** Red/White

- Includes suction mounts and switched cigarette lighter plug on a 2.7m cable
- Multivolt, 12-24 V
- Very bright intensity LEDs
- Made to meet SAE Class 1
- Multiple flashing patterns
- Swivel head to direct flashing
- Available in various colours
- Overall size 159mm W x 53mm H x 88mm D
- Kit includes bracket for mounting in the grille

▶ Watch our Video - <https://blog.transquip.co.nz/flashing-light-you-can-install-fire-up-in-moments>

## Twin Window Mounted LED Flashing Lights



- Ideal for quick mounting - window mount Flashing light with suction mounts and switched cigarette lighter plug on a 2.7m cable. Multivolt 12 – 24 volt
- Very bright intensity LEDs. Made to meet SAE class 1
- Multiple flashing patterns, and swivel head to direct flashing
- Size: 255mm wide x 53mm high x 115mm deep

**#9129** Amber

**#9129** Magenta

**#9129** Red/White

## Pop-up Amber LED Light Kit



**#9118**

- 10-16 volts with 19 selectable flash patterns
- Weatherproof & vibration resistant
- Maximum current draw: 1.8A at 12.8 VDC
- Only 28mm diameter
- Surface or headlight lamp
- Pop-in design for easy installation - just drill a hole at the right size and fit these in!
- Comes as a kit with two lights and a complete wiring loom etc



# Directional and Marker LED Lights

## Directional LED Light Heads

- High intensity light heads with multiple flash patterns
- Bright yet compact
- Can be synchronised to flash together
- SAE Class 1 compliant
- Amber LED's
- Red or white LED options available - please enquire
- Multivolt



- 110mm L x 29mm W x 10mm H
- 6 LED's

**#9109** Amber



- 85mm L x 27mm W x 16mm H
- 3 LED's

**#9110** Amber



- 128mm L x 27mm W x 16mm H
- 6 LED's

**#9113** Amber



- 132mm L x 49mm W x 19mm H
- 12 LED's

**#9116** Amber



- Ideal for mounting in grille
- 122mm long x 41mm wide x 29mm high
- 19 flash patterns

**#9136** Amber

## Rechargeable Marker Light Kit

### #9500

- Amber rechargeable marker light kit
- Comes with 12V USB and 240V rechargeable units
- Simply plug in case and charge up lights!
- Tough flashing warning lights in amber
- Kit of six lights in a case
- Internal magnet for attaching to vehicle
- Water resistant and floats!
- Virtually crushproof!



## Sequential LED Light Kit of 4, Rechargeable in Carry Case

### #9545

- Stand out from the pack - use under cones
- 4 x lights and a charger in a carry case
- IP67 rating
- Power: 4W (side) + 1.5W (top)
- LED Colour: Amber for top and red for sides
- Battery: 3.7V 3000mah
- Strong magnet on the back
- Can be seen from 1.5km away at night
- Max working distance between lights: 50m
- Charging time: 5-6 hours
- Battery can go for up to 35 hours on sequential function
- Includes both wall and cigarette lighter plug



► Watch how these work - <https://blog.transquip.co.nz/sequential-light-kit-that-stand-out-from-the-pack-video>

# Over Dimension Hazard Panels

## Tough Aluminium Hazard Panels

300mm x 400mm day/night double sided panels

**#9207** Hazard panel on alloy

300mm x 400mm day/night single sided panels

**#9206R** Right hand on alloy

**#9206L** Left hand on alloy

## Economy Composite Hazard Panels

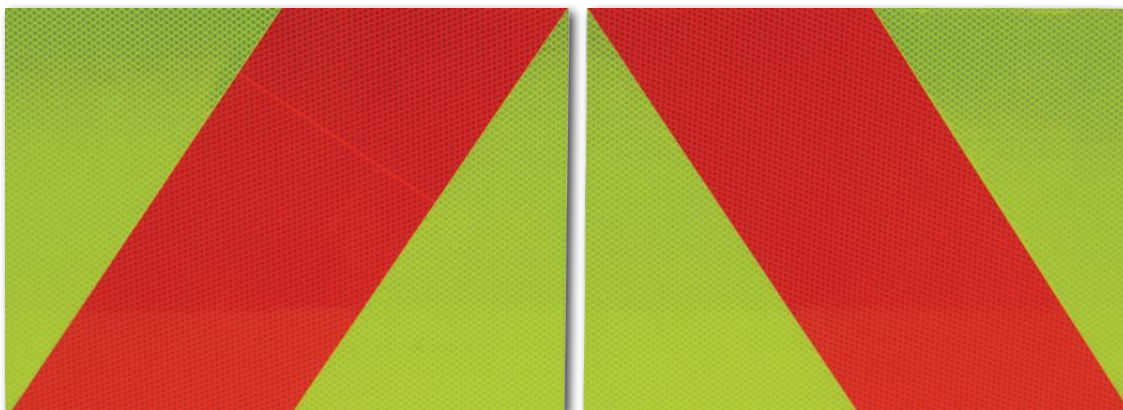
300mm x 400mm day/night double sided panels

**#9247** Hazard panel on composite

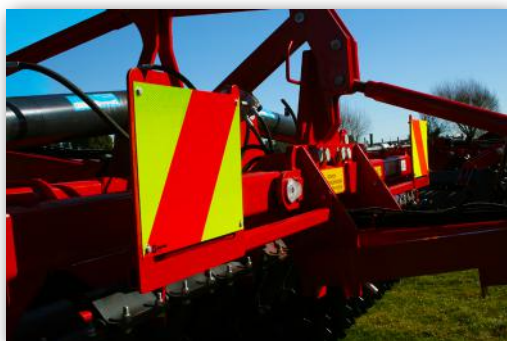
300mm x 400mm day/night single sided panels

**#9246R** Right hand on composite

**#9246L** Left hand on composite



## Adhesive Labels



300mm x 400mm day/night adhesive label only

**#9208R** Right hand adhesive label only

**#9208L** Left hand adhesive label only

600mm x 200mm day/night adhesive label only

**#9255R** Right hand adhesive label only

**#9255L** Left hand adhesive label only

## Hazard Panels on Aluminum, 600 x 200mm

Day/night single sided panels 600mm x 200mm

**#9256R** Right hand on alloy

**#9256L** Left hand on alloy

Day/night double sided panels 600mm x 200mm

**#9257** on alloy



## Need more information on the NZ Over Dimension requirements?

- Get a copy of fact sheet 53 off <https://www.nzta.govt.nz/assets/resources/factsheets/53/docs/53-overdimension.pdf>
- Phone 0800 699 000
- Check out the NZTA website: [www.nzta.govt.nz](http://www.nzta.govt.nz) or email [info@nzta.govt.nz](mailto:info@nzta.govt.nz)

While we endeavour to keep current, it is your responsibility to comply with current regulations

# Over Dimension Solutions

## Extendable Hazard Panel Mounting Kit

### #9250HP

with Hazard Panels in kit

#9250 Arm kit only  
(Hazard panels extra)

Kit consists of:

- 2 x extendable mounting arms
- 2 x amber marker lights & cable
- 2 x locking pins
- 2 x 200mm long cable ties
- 2 x double sided Hazard Panels (9250HP kit only)



## Vehicle Signs

### #9224

**Pilot Vehicle/Wide Load Follows**

Double sided panel for day/night use.  
1100mm x 520mm

### #9220

**Pilot Vehicle panel for day/night use**

1100mm x 520mm

### #9222

**Wide Load Follows panel for day/night use**

1100mm x 520mm



#9220



#9222

## Oversize Signs

### #9210

- OVERSIZE panel for day / night use
- Size - 1100 x 300mm

### #9213

- OVER panel for day / night use
- Size - 550 x 300mm

### #9215

- SIZE panel for day / night use
- Size - 550 x 300mm



#9210

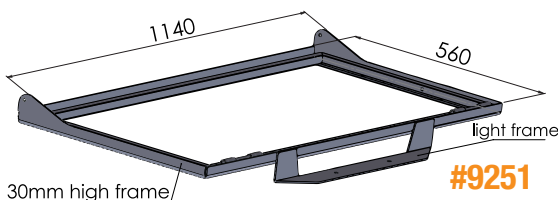


#9213



#9215

## Folding Vehicle Sign Mount



### #9251

- Fold down when not in use
- Easy to use
- Light weight alloy
- Includes mounting bracket for flashing light (flashing light and sign are extra to mount)

\*Sign & Light not included

# Over Dimension Solutions

## Flags



**#9200**  
Fluoro vinyl eyelet flag  
with rope border  
400mm x 300mm



**#9203**  
Fluoro vinyl pole flag  
with rope border  
400mm x 300mm



**#9201**  
Fluoro vinyl  
eyelet flag with rope border,  
two bungy cords for easy  
securing  
400mm x 300mm



**#9205**  
Fluoro vinyl pole flag  
with a rope border &  
alloy handle  
400mm x 300mm



**#9199**  
Fluoro vinyl flag  
with orange  
stripe  
400mm x 300mm

## Self Powered LED Marker Light



**#9234** Amber

**#9233** Red

- Powered by 'AAA' batteries (2 supplied)
- 6 function modes, wide angle beam
- Includes clip
- Size: 65mm wide x 40mm high

## Led Amber Flashing Beacon Magnetic

**#9502** Amber

**#9503** Red

- Power Source - AA batteries
- Tough - made to take the knocks.
- Smart LED light with steady burn or flashing option.
- 2 functions, range of fittings also available as follows.



## Stop /Slow Signs

Double-sided with handle  
350mm diameter

**#9228W** Wooden handle

**#9228A** Alloy handle



## 'H' for HPMV's

**#9227**

- 200mm square
- Adhesive sign



## Reflective Tape



**#9260** Yellow only

**#9261** White only

**#9262** Red only

**#9266** Red / White

**#9267** Blue / White

**#9269** Red / Yellow

- Other colours also available
- 50mm wide tape to help you stand out, and look good!
  - Cut to any length you require

# Safety Essentials

## Dry Chemical Fire Extinguishers



- Don't get caught out without one!
- Tagged upon purchase
- Vehicle brackets included for 1 - 2.5kg sizes, bigger sizes have wall mount brackets
- Heavy duty vehicle brackets also available



- #3512** 1kg
- #3514** 1.5kg
- #3513** 2kg
- #3511** 2.5kg
- #3515** 4.5kg
- #3518** 9kg

## Emergency Hammers

### #3795

#### Emergency Hammer with Built-in Alarm

- Be ready for an emergency!
- Excellent value
- Hammer and seat belt cutter
- Alarm is loud - 80db. Deters theft
- Alarm activated when removed from mount
- 135mm x 70mm x 35mm
- Includes mount - can be mounted in many positions

### #3790

#### Standard Emergency Hammer (no alarm)

- Shatters windows quickly and easily
- Cut seatbelts with razor sharp blades



## Seatbelt Kits

### #KI7688

Kit includes: 3" ALR black Retractor and Springbelt Multi-positional!



### #KI5373

Kit includes: 3" black lap belt and 135mm long stem buckle



### #KI6649

Kit includes: 3" ALR black Retractor and 200mm long flexi buckle Multi-positional Great all-rounder!



Complies with NZ standards and are Worksafe compliant

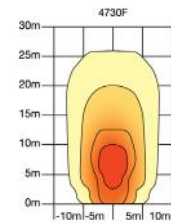
# Why Work in the Dark?

## LED Worklight

- Multivolt 12 & 24 volt
- Radio interference free
- Square or round worklight with tough alloy housing
- Flood beam
- Swivel mounting bracket and 2 tabs for flat mounting included
- Waterproof IP 67

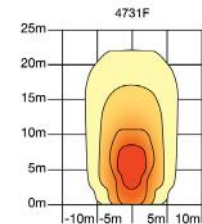
### #4730FM

- 1300 lumens; 18 watt
- Magnetic base with 9mm long lead with cigarette lighter
- Ideal for mounting and powering up quickly!



### #4730F

- 1300 lumens; 18 watt
- Swivel mounting bracket and 2 tabs for flat mounting included



### #4731F

- 950 lumens; 15 watt
- Swivel mounting bracket and 2 tabs for flat mounting included

## Heavy Duty LED Worklight

**Top Seller!**



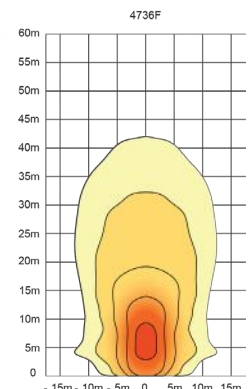
### #4637F 1900 lumen

- Radio interference free - meets EMC requirements
- Save your battery and fuel - very low current draw
- 1900 lumen options
- Heavy duty housing, polycarbonate lens
- Big voltage range 10 - 70 DC
- 110mm wide x 108mm high body
- Wide mounting base for extra strength
- Flood beam

## Bright and Economical

### #4736F

- 48 watt
- 3200 lumens
- Flood beam
- 12-48 volt
- 118mm x 73mm x 154mm
- Radio interference free

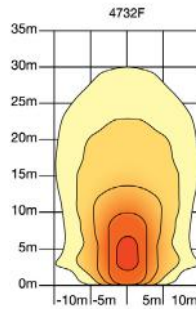


# Light Up Your Work Area!

## Square LED Worklight

### #4732F

- 27 watt, 1800 lumen LED
- Multivolt; 12v and 24v
- Save your battery with a very low current draw
- Tough alloy housing
- Stainless steel swivel bracket
- Head size; 109mm square
- Waterproof IP67
- Comes with 2 mounting plates also, so it can be 'flat' mounted



## LED Worklight with Handle

### #4738

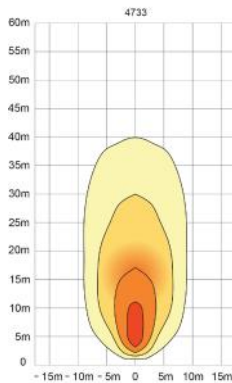
- Size - 109 x 109 x 50mm
- Multivolt 10-30 volt
- Waterproof
- 27 watt
- Floodlight #4738-F and spotlight #4738-S available



## LED Worklight with Adjustable Bracket

### #4733

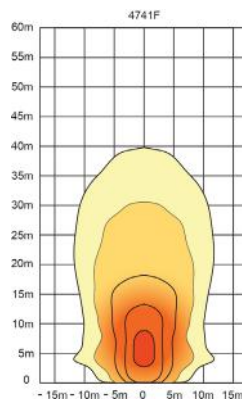
- 24 watt
- 1800 lumen
- Multivolt 12-48 volt
- Size 156x95mm
- Bracket can be adjusted to go horizontal or vertical



## Round LED Worklight with Switch

### #4741F

- Round LED worklight with switch
- 12-48V DC
- 14 PCS high performance LEDs
- 42W, 3150 Lm output
- Aluminium housing and Polycarbonate lens
- Working temperature: -40 degrees C to +50 degrees C
- Waterproof IP67
- Shock resistance 20g
- Long range beam



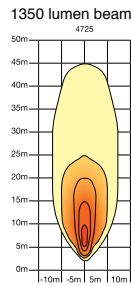
# LED Light Bars - Low Profile

## Light Bars



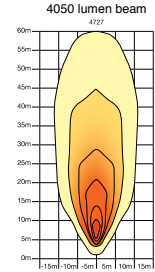
### #4725

- 6 LEDs
- 200mm long x 55mm wide x 86mm high
- 18 watt - 1350 lumens



### #4727

- 18 LEDs
- 536mm long x 55mm wide x 86mm high
- 54 watt - 4050 lumens



## Super Bright LED Light Bars



#4715 - Straight Body



#4718 - Curved Body

- Tough alloy housing with polycarbonate lense
- Waterproof, IP67
- Mounting brackets included
- 4 options available

### #4715 Straight Body

- 48 LEDs
- 144 watts
- 10800 lumens
- 881mm long

### #4716 Curved Body

- 48 LEDs
- 144 watts
- 10800 lumens
- 910mm long

### #4718 Curved Body

- 72 LEDs
- 216 watts
- 16200 lumens
- 1290mm long

### #4717 Straight Body

- 72 LEDs
- 216 watts
- 16200 lumens
- 1259mm long

## Search Light



### #4646

- Remote control so you can stay in your vehicle and reposition your light
- 360 degree movement horizontally and 120 degrees vertically
- Can be used for many applications, for extra security, on worksites, at home or out camping
- 1050 lumens rated to IP65
- Light colour: 5500 Kelvin (cold white)
- AC 175-265V
- Battery 3.7V - 4400mAH
- Charging time 4 - 5 hours
- Lifespan >30,000 hours

► Check out our video - <https://blog.transquip.co.nz/video-search-light-with-remote-control>



# Forklift Safety Lights

## Laser Safety Light

### #4712



- These laser sidelights are mounted on the forklifts roll cage or mast
- 150 degree up/down mounting bracket which allows precise positioning of a thin red line beam on floor
- This creates a “safe zone” and a “danger zone” perimeter around each side of the forklift
- Size - 29.97mm x 29.7mm x 28mm
- Weighs 0.28kg
- Picture on the right shows 3 lights in use



## Spot Safety Light

### #4714



- Shine a blue spot on the ground to warn of danger
- 10-80V & 120 lumen
- Bracket mounted with 520mm long cable
- EMC approved & IP67 waterproof
- 3 year warranty
- Aluminium diecast housing & PC transparent lens
- 2 x 3 watt blue LED (7W)
- 120mm wide x 67.7mm deep x 70.1mm high (103.3mm high including mounting bracket)



## Warning Line Safety Light in Red or Blue

### #4713B Blue

### #4713R Red



- 10-80V & 120 lumen (blue), 180 lumen (red)
- Screw mounted with 500mm long cable
- EMC approved & IP67 waterproof
- Aluminium diecast housing & PC transparent lens
- Blue 6.4 watt & red 5.0 watt
- 62mm wide x 56.4mm deep x 53mm high (98.5mm high including mounting bracket)
- Picture on the right shows 2 lights in use



# Rear View Camera Kits

## Heavy Duty Reversing Camera Kit

**Top Seller!**



**#4484**

Heavy Duty Reversing Camera Kit ideal for commercial vehicle applications like Trucks, Buses, Combine Harvesters, Tractors, Excavators... In fact, any vehicle where you want to increase your safety factor. Can be powered by 12v to 32v, and has 4 pin screw connections. 12 month Warranty. (Conditions apply.)

**Kit includes:**

- 7" colour monitor and mounting stand
- One heavy duty camera with heated screen
- 20 metre cable
- Wiring and remote control
- Extra cameras and cables also available

**Technical Information:**

**Camera Features:**

- Waterproof rating IP69K
- Operating Temp -20 to + 70 degrees C
- Lens angle 120 degrees
- Image sensor 1/3" CCD
- TV System NTSC/PAL optional
- Audio function
- Heated

**Monitor features:**

- Screen size 7"
- Built in speaker
- Contrast, Colour and Brightness adjustable
- Keeps last memory
- OSD menu
- Resolution 480 x RGB x 234
- Input: 2-AV input
- Digital

## Quad Reversing Camera Kit



**#4486**

- Same as above except displays multiple views and takes up to four cameras

## Extra Cameras and Cables

**#4491**

Reversing camera joining cable kit for hooking up trailers also available



**#4490-5**  
5M extension cable

**#4490-10**  
10M extension cable

**#4490-20**  
20M extension cable



**#4488**

**Heavy Duty Camera**

With heated screen to prevent fogging up

# Reverse Safety

## Wireless Reversing Camera Kit with Rechargeable Camera



**#4476**

### Monitor Specification:

- Screen Size: 7 inch new TFT panel
- Power supply: 9-36V DC
- Built-in speaker
- Operation Temperature: -30°C~+70°C.RH95% Max
- Cigarette lighter plug to power up

### Camera Specification:

- IP Rating: IP 69K
- Vibration Rate: 10G
- Lens Angle (Deg.) 120°
- Magnetic base for easy attachment
- Rechargeable with cigarette lighter plug or 240 volts charger

## Wireless Reversing Camera Kit



**#4483**

- Wireless rear view camera kit
- Ideal for where it is difficult to run a cable between the monitor and the camera
- This kit includes a wireless 7 inch monitor with an embedded 2-4G receiver
- Digital LCD Monitor
- Digital Signal

## Rear View Cameras



**#4498**

- Rear vision mirror kit with a 3.5 inch monitor on the mirror
- Great for Utes

## Reversing Alarms



- Activated when reverse gear is engaged
- Compact - easy to fit on
- Dual voltage

**#4459** 102 dB 12-48V Broadband sound

**#4460** 97 dB 12-80V Broadband sound

**#4461** 77-102dB 12-24V Self adjusting traditional sound

**#4462** 77-97dB 12-24V Self adjusting broadband sound

**#4482** 102 dB 12-80V Traditional beeper sound

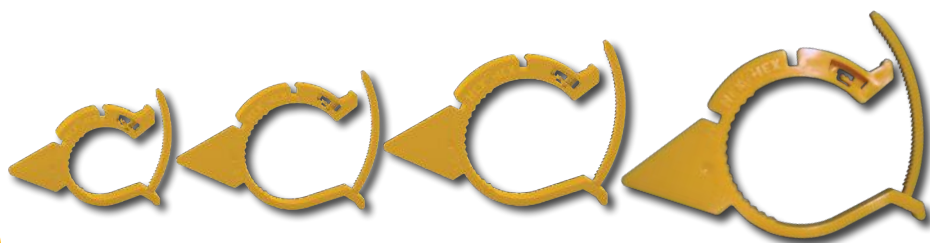


**#4480** 97 dB 12-80V Traditional beeper sound

# Vehicle Safety

## Hex Chex Wheel Nut Indicators

- Four multi size products
- High temperature tolerant
- Hand tighten, no tools required
- 19mm - 50mm range
- Custom engineered polymer
- Durable and reusable
- Metric and Imperial
- Fast and easy application



19-23mm  
#4095-1923

23-30mm  
#4095-2330

30-38mm  
#4095-3038

38-50mm  
#4095-3850



▶ Check out our Video - <https://blog.transquip.co.nz/quick-fit-multi-fit-hexchex-wheel-nut-indicators>

## Rubber Wheel Chocks



**#3709**

- High density rubber with yellow reflective strips
- Size: 260mm L x 160mm W x 190mm H
- Weight - 3kg each

- High density rubber
- Your own risk assesment must be carried out before using this product
- Sold in pairs



**#3708**

- Large rubber wheel chock
- Sizes - 360mm long x 290mm wide x 265mm high
- Weight - 7kg each