

# Moorings 4500 Crewed

## Specifications and Equipment List - Moorings Upgrades In Bold

### DECK & HULL

---

- Forward lounging cockpit with hardtop with watertight saloon access door and sliding hatch for easy foredeck access
- Hardtop over fwd and aft cockpit complete with LED down lighting and concealed rope lighting in fwd and aft cockpit
- Hardtop bimini over helm with supports and LED lighting
- Hardtop supports
- Upholstered helmseat with cushion and upholstered backrest
- **Removable helmseat spray dodger**
- Compass at helm position
- Cockpit table
- **Fitted cushions forward and aft cockpit**
- Guardwires with stanchions, bases, port & starboard side gates
- Guardwires across bow and stern
- 1600w verticle windlass with 10mm gypsey with handheld remote
- Anchor bow roller fitting
- Anchor chain stopper
- 1 x Anchor/windlass locker with chain bin
- Liferaft locker with convertible fore/aft seat bolster in aft cockpit
- Folding swim ladder with five teak steps
- Sliding companionway door/window
- Acrylic smoke grey tinted windows
- **Aft cockpit side back shade curtains**
- 4 x Size 10 flush hatches over heads
- 2 x Size 44 flush hatches over aft cabins
- 4 x Size 60 Flush Hatch over forward cabins and forepeaks (2 x hatches over forepeaks include mushroom cowls) 2 x
- Size 5 portlights in windscreen
- 8 x Size 1 portlights in hull side
- 2 x Custom portlights in transom
- 2 x Pulpits with seats
- 2 x Pushpits
- 2 x Coachroof handrails
- 2 x Hardtop grab handrails
- 9 x 260mm mooring cleats
- **LPG gas outlet on stern rail and propane bbq**
- Gas cylinder regulator in dedicated cockpit LPG locker
- **Custom davit system (stainless steel) with electric winch**
- 5 x Foredeck / forward cockpit lockers
- Drink holders: 2 in fwd cockpit and 4 in aft cockpit
- Moorings striping and graphics
- **Deck wash fitting & pump - dual fresh/salt water system**
- Trampoline
- **2 x Bean bag chairs**
- **Composite teak decking: aft cockpit, fwd cockpit, helm platform, transom steps**
- **Refrigerator in aft cockpit 12v**

### SALOON/INTERIOR

---

- Laminate finish with solid wood trims
- Wear resistant simulated wood flooring
- U-shaped settee
- **Saloon table convertible to a coffee table in addition to standard double bunk conversion**
- Hinged saloon table
- Overhead skylight
- Ventilation through forward facing portlights and watertight door

---

*Initials*

---

*Initials*

- Stowage space under settee cushions
- Access to aft cockpit through sliding door/window
- Window alongside companionway door
- 2 x Upholstered ottoman stools to be used as chart table seat or settee seating
- Joinery staircase to hull accommodation
- **Faux leather saloon cushions**
- **Safe with digital combination lock located in the saloon**
- **Interior saloon blinds - front & side windows**

## GALLEY

---

- Corian® galley worktop surfaces
- Dish and cutlery drying recess with drainage and cover
- Vitrifrigo 2-drawer fridge/freezer 56USgal / 212L 12v
- Single lever mixer faucet
- Single bowl stainless steel sink
- 3-burner gas hob & oven
- Gas solenoid shut-off valve with control at switch panel & warning light at cooker
- Separate garbage bin locker
- Stowage space in shelf lockers
- Stowage space under floorboards
- Pot drawer under oven
- 4 x Galley drawers
- Spice / condiment drawer
- Outboard galley shelf with microwave
- **Microwave oven in galley (110V)**

## NAVIGATION CONSOLE

---

- Chart table with stowage locker under hinged lid
- Stainless steel backrest railing

## CABINS x 4

---

- Wear resistant laminate flooring
- Double berths: Forward bunks (56in / 1.42m x 84in / 2.15m)
- Semi-island berths port and starboard aft cabins
- Bedside storage cubby (forward cabins)
- Hanging locker with lower shelf
- Indirect LED lighting
- 2 x Stowage drawers under bunk (only 1 drawer in aft cabins) Transom portlight in aft cabins Large
- open shelves
- Large hull window incorporating portlight and pleated blind Laminate finish with solid wood trims
- **Full length mirrors for 4-Cabin Layout (4)**
- **Ventilation fans in cabins only for 4 cabin layout (4)**

## HEAD COMPARTMENTS x 4

---

- Overhead roller blinds for privacy in combination with roller bug screens
- Washbasin with basin mixer and Corian® worktop
- Under-basin locker with toilet roll holder
- Vanity locker with mirror
- Double towel rail and ring
- Sliding head door with coat hook
- Dedicated trash can locker
- Separate shower compartment with door, lever mixer and adjustable shower rose
- Shower sump with automatic drainage system
- **Large bowl electric marine toilets**

## PORT FOREPEAK

---

- **Port forepeak includes mattress, Air conditioning, A/C electric outlet, 2 USB Ports, Fire Extinguisher**
- Forepeak shelf with fiddle
- Hatch shade
- Inboard storage locker with shelves
- Ply base with access hatch into bilge
- LED light
- Access through deck hatch hatch only. No bulkhead access to interior

## STARBOARD FOREPEAK

---

- **Wash basin with faucet & mirror**
- **Electric head**
- **Shower with shower curtain and automatic sump drain**
- Access through deck hatch hatch only. No bulkhead access to interior
- Stainless steel access ladder
- Hatch shade
- LED light

## ELECTRICAL INSTALLATION

---

- Concealed overhead rope lighting
- **LED lights throughout**
- 12v DC switch panel
- 1 x 12v Outlet socket at the switch panel
- 1 x 12v Outlet socket at helmstation
- 2 x Double USB sockets at chart table
- 1 x Double USB socket at switch panel
- 1 x Double USB outlets in each cabin
- 2 x Fuel tank gauges at helm position
- 2 x Ammeters at helm position
- 1 x House battery isolator switch
- 2 x 125ah alternators, standard with engines
- **Raymarine Instrument Package: Includes color autopilot display, 9" Multifunction display, Colour instrument and Remote buttons at Helmstation. With depth & wind transducer**
- **VHF at Switchpanel & additional VHF handset at helm**
- **110v or 220v hard wired shore cable, includes 2 x heavy duty 30amp shore power line, AC switch panel, and AC double outlets in cabin, galley and at switch panel**
- **Fusion Marine Stereo with docking station in saloon. Includes Bluetooth, USB & AUX connectivity**
- **2 x Speakers in saloon and aft cockpit**
- **Wired stereo remote control at helm station**
- **2 x External speakers in forward cockpit with wired remote and amplifier**
- **Garmin C10 forward facing Camera**
- **Inverter/battery charger 2000w**
- **Generator**
- **Air conditioning (2) Total 32,000 BTU**
- **2 x Solar Panels 100w each fitted to hardtop**
- **2 x AGM 100Ah engine starter batteries**
- **House battery bank -- 3 AGM batteries totalling 630ah**
- **Digital battery monitoring**
- **Link engine starter batteries to house batteries. Operated from push button at helm.**
- **Moorings marine smarhub (wifi via cellular network and stored local content)**
- **Blue Underwater Lights**
- **TV**
- **Sterling alternator to battery charger**

## MAST, RIGGING & SAILS

---

- **Custom heavy duty battened charter mainsail**
- **Upgraded heavy duty furling genoa with UV protection**
- **Stackpack LazyJack system in Moorings blue with logo**
- Bridle mainsheet system (3:1 purchase) comprised of 2 mainsheets
- 2 x Winch handles
- 2 x Mainsheets (3:1 purchase)
- 2 x Genoa sheets
- 3 x Halyards (main, genoa & spare)
- 2 x Single line reefs lead aft
- Main boom topping lift
- Natural anodized mast and boom
- Wind indicator
- **ProFurl furling system**
- 2 x Additional spare 12v wires in mast
- Additional spare conduit with messenger in mast
- **2 x Primary electric winches**
- 1 x Main sheet winch
- 2 x Genoa cars
- 2 x Genoa tracks
- 1 x Winch handle pocket at helm
- 1 x Halyard clutch at helm (mainsail)
- 1 x Halyard clutch at helm (genoa)
- 2 x Genoa clutch at helm
- 2 x Mainsheet clutch at helm
- 2 x Reef clutch at helm
- 1 x Clutch and cleat on mast for genoa halyard
- 1 x Furler catch
- Rope bag at helm and rope pocket for mainsheet

## ENGINE & CONTROLS

---

- 2 x Yanmar 45hp common rail diesel engines with sail drives
- 2 x Fuel tanks 185USgal / 700L total capacity
- 2 x Fuel deck fillers
- 2 x Fuel filters / digital water sensors
- Double lever throttle / gearshift control
- Sound deadening panels in engine room
- 2 x Engine room ventilation fans and ducting
- 2 x Propellers - 3-blade fixed
- 2 x Exhaust skin fittings (stainless steel)
- 2 x Exhaust water locks/mufflers
- 2 x Cooling water inlet strainers
- 2 x Exhaust cooling water temperature sensors with audible alarms at helm

## RUDDER & STEERING SYSTEM

---

- Balanced spade rudders
- Rudder stock in F16ph stainless steel
- Self aligning bearings
- Chain and wire steering system with bulkhead steering unit and brake
- Destroyer-type steering wheel
- Stainless steel emergency tiller

## PLUMBING INSTALLATION

---

- Hot and cold pressurized fresh water system
  - 2 x Water tanks with total capacity 206USgal / 780L
- 

\_\_\_\_\_  
*Initials*

\_\_\_\_\_  
*Initials*

# EXHIBIT A

---

- 1 x Fresh water pressure pump with accumulator tank
- 2 x Hot water tanks with total capacity 12USgal / 46L
- **Transom shower with hot and cold water mixer**
- 2 x Electric bilge pumps (keel sump) with float switches and alarm at switch panel
- 2 x Manual bilge pumps
- 2 x High water bilge float switches with alarm at switch panel
- 2 x Electric bilge pumps (engine room) with alert at switch panel
- **Watermaker: 117 ltr/31 Usgal per hr**

## SAFETY GEAR

---

- **6 x Mooring / dock lines**
- **8 x Fenders**
- **55lb Stainless steel DTX anchor with 230Ft / 70m galvanized chain**
- **35lb Britany anchor with chain & warp**
- **Anchor bridle, shackles and hook**
- **Life jackets and safety harnesses per max pax**
- **Bell**
- **Flare kit**
- **Binoculars**
- **Navigation tools: Parallel rule, compass, dividers**

## CRUISING GEAR

---

- **1 x Two person kayak**
- **Bed linens per max pax**
- **Plates, cups, saucers, glasses per max pax**
- **Flatware per max pax**
- **Pots, pans, miscellaneous food prep tools**
- **Cooking and serving utensils**
- **Coffee pot, tea kettle, toaster**
- **Towels and washcloths per max pax Snorkeling gear per max pax**
- **Fishing tackle**
- **12ft rigid bottom inflatable with 25HP outboard**
- **Waterskis, kneeboard, tube & life vests**
- **1 x SUP (stand up paddleboard) and paddle**

## GENERAL EQUIPMENT

---

- Owner's Operating Manual
- 6 x Fire extinguishers
- NMMA Certification
- CE Certification

---

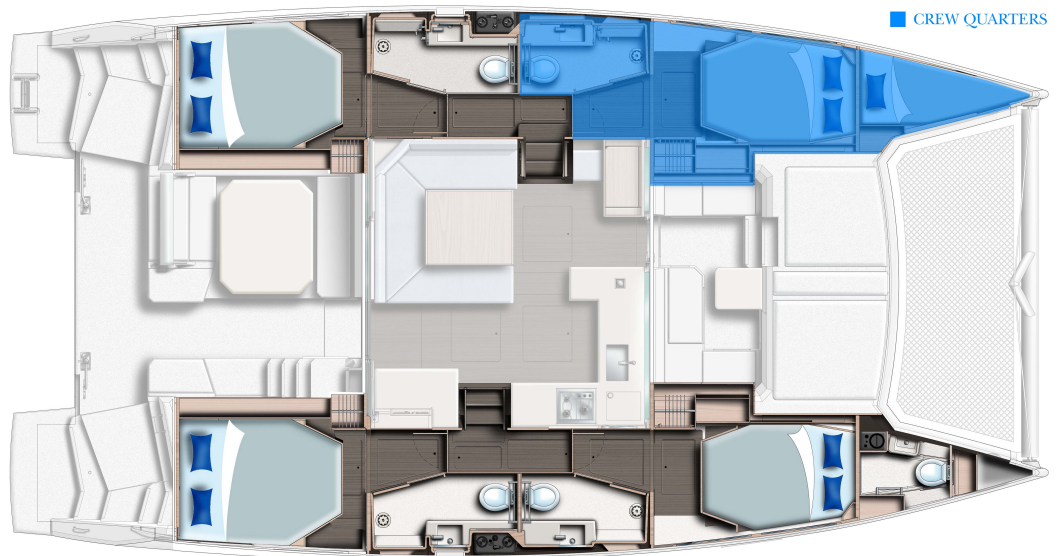
*Initials*

---

*Initials*

## GENERAL SPECIFICATIONS

Length Overall:	13.72m/45ft 0in
Waterline Length:	13.07m/42ft 11in
Mast Height:	21.34m/70ft 0in
Beam:	7.35m/24ft 2in
Draft:	1.50m/4ft 11in
Displacement:	14500kg/31967lb
Fuel Capacity:	700L/185gal
Water Capacity:	780L/206gal
Sail Area:	120sqm/1298sqft
Engines:	2 x Yanmar 45hp diesel engines with sail drives



*The Builder reserves the right to change or amend the contents of this document at any time without prior notification to any third party, and no liability will be accepted for errors contained within the same.*