



Monitor your IBD patients closely with
CalproSmart rapid home test
 for fecal Calprotectin

The simplest test on the market for a self test for Calprotectin providing quantitative results. CalproSmart test is used by the patient themselves and by following the guidance and capturing the image from the test cassette using a mobile phone with CalproSmart app. This all is available free of charge for both Android and iPhone.

- Sub-clinical detection of flare
- Reducing hospital visits and admissions
- Reducing need for prolonged drug administration
- Increasing quality of life for the patient



<20 min run time
4 simple steps



Range: 70-1500mg/kg
Color-coded presentation



Correlation with
CalproLabELISA:
 $R^2=0,875$



Sensitivity: 94%
Specificity: 78%



12+month shelf life



Cloud storage
EU GDPR compliant



Open API to connect to
HIS, databases and apps



CAL230: 3 tests
CAL240: 4 tests
CAL250: 5 tests

Disclaimer:

CalproSmart is not a FDA approved device, and can thus be only used for clinical research in the US market.

How does it work?

CalproSmart – the best tool for close follow up of your IBD patients

Intended for home monitoring of patients with established IBD diagnosis, the CalproSmart Home test provides great benefits to both the HCP and the patient:

- Reduced burden on the clinic and HCPs
- Reduced numbers of acute visits and admissions
- Remission is achieved quicker as inflammation is treated sub-clinically
- HCP can closely monitor the patient development
- Increased quality of life of the patient

THE TEST:

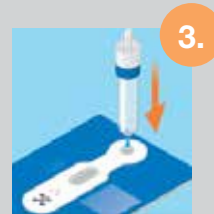
CalproSmart test is the simplest test on the market for a self test for Calprotectin that provides quantitative results. The procedure can be split into 4 parts:



1. Easy sampling with the sampling rod from extraction device



2. Extraction is done by shaking the tube for 3 min



3. Sample is applied to the test cassette and run for 15 min






4. A picture is taken with the mobile phone app to read the cassette

RESULTS AND THEIR INTERPRETATION

CalproSmart provides quantitative results in the range 70-1500 mg/kg.

The results are also represented as color-coded categories:

Value (mg/kg):	Indication	Color-code
<200	Mild	Green 
200-500	Moderate	Yellow 
>500	Severe	Red 

The values can be changed according to need.

All results are sent directly to web portal, while email is sent to treating physician or investigator. Results are stored in portal, and can also be exported or passed on to other platforms and databases through various levels of integration.



THE WEBPORTAL

This is the backbone of the test, where both users and patients are registered. All submitted results can also be viewed here. The web portal is online portal accessible from any computer or device with internet access, and access is gained through personalized user accounts.



THE APP

CalproSmart test is used by the patient by following the guidance and capturing the image from the test cassette using a mobile phone with CalproSmart app. This all is available free of charge for both Android and iPhone.

The app has a step by step guide with images and description in local languages to ensure that the patient performs the test according to the protocol.