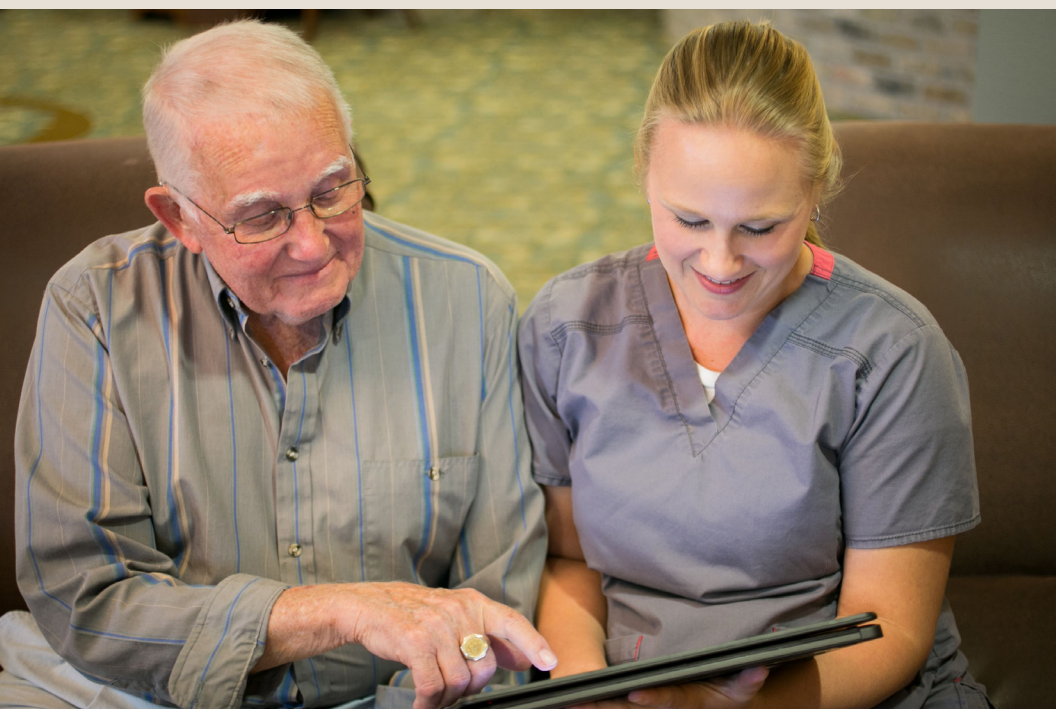


# Join Our Team



*Serve one another in love. (Galatians 5:13)*

.....

THE LUTHERAN HOME  
ASSOCIATION



Where the care of the soul is the soul of care.

The Lutheran Home Association's history goes back to one family's loss during the Civil War, which led to the creation of a home for the aged and the orphans in 1898. It's a story of love, dedication and hope.

Today, we have five communities in two states. We are proud to be part of the cities of **Belle Plaine and Mankato, Minn.,** and **Watertown, Fountain City and River Falls, Wis.**

Each location offers a variety of health care and housing services for older adults and people with special needs, and we assist churches in developing outreach ministries.

## Careers with compassion

No matter your role, you will have the opportunity to share eternal hope, provide hope and inspire hope through the work you do every day.

**In-demand careers at The Lutheran Home Association include:**

- Nurses
- Nutrition Services
- Homemakers
- Activities
- Caregivers — Home Health Aides, Certified Nursing Assistants, Resident Assistants and Direct Support Professionals

We also have opportunities in management, billing, maintenance, administration, social services and more — as well as possibilities for internal advancement!

Our 625 team members served 1,947 lives through health care, housing services, and outreach ministries last year.



♥ apply today at [info.tlha.org/careers](http://info.tlha.org/careers)



"I enjoy the opportunity to minister to the physical, emotional, and spiritual care of God's people at this important stage of life. I am blessed to serve with a dedicated team who work together to make the needs of our residents their top priority."

**Dave, Activities**



"It's a privilege being able to make a difference in the lives of the residents and their families."

**Jennifer, Home Health Aide and Staffing Coordinator**

"I started out as a Direct Support Professional, then became a Trained Medication Aide, then a Licensed Practical Nurse and am now a Registered Nurse. Having different opportunities is one of the reasons I enjoy working here. They are also very understanding and flexible. I was able to change my schedule several different times while completing my education. I can honestly say I learn something new every day and feel fulfilled, like I really made a difference."

**Ashley, nurse**



# why TLHA?

*The mission of The Lutheran Home Association is to share Christ's love as we serve the spiritual, physical, intellectual and emotional needs of people entrusted to our care and others whose lives we touch.*

## TOP 5 REASONS TO JOIN OUR TEAM

1. Rewarding work that makes a difference to others
2. Comprehensive benefits and competitive wages
3. Flexible work schedules
4. Specialized training and opportunities for personal growth, professional development and advancement
5. Strong organizational values, goals and ethics

## OUR VALUES

*Where the care of the soul is the soul of care*

God's word, in its entirety, serves as our guiding principle. We provide compassionate and dignified Christ-like care and services to the disabled and vulnerable, no matter how difficult.

**Respect** We respect all persons we serve and our employees who serve them.

**Resilience** Knowing the positive difference we make in the world, we are resilient in the face of setbacks by using great problem-solving and communication skills.

**Integrity** We have an uncompromising and predictably consistent commitment to honor moral, ethical and spiritual values and principles.