

# THINK SMARTER SOLAR





# Enphase technology changes everything.

The leader in microinverter technology brings you simple, smart solar. **The Enphase System** connects each solar panel to a microinverter and monitors them through intelligent, web-based software.

It's a system that allows:

- Each panel to operate independently, maximizing system production.
- Remote monitoring and troubleshooting to keep the system operating at peak performance.
- Maximum design flexibility to fit any roof.

The result is a faster return on your solar investment.



## More power means lower energy bills

Traditional inverters operate at the level of the lowest-performing panel, so a little shade, dust or debris can have a negative impact on production – and your energy bill. Enphase Microinverters allow panels to operate independently, increasing performance even in the low light of morning, evening, or cloudy days.



## Long-term reliability

Enphase Microinverters are the result of a highly refined design and testing process pioneered by the industry leader in microinverter technology. With that comes the confidence to offer industry-leading reliability.



## Faster return on your investment

With Enphase, your system is always running at maximum efficiency, giving you more power for your money. Rest assured knowing Enlighten monitoring software makes it easy for solar professionals to identify and resolve issues, maximising system performance and delivering a faster return on your investment.



## Safer to install and own

Single-point inverter systems utilise high-voltage DC wiring, which can generate sustained electrical arcs when damaged or installed improperly. Enphase Microinverters use low-voltage AC wiring, significantly reducing the risks of fire and injury.

## Take control With **MyEnlighten**



MyEnlighten is your online connection to system performance through an **engaging, easy-to-use interface** that you can customise with your own photos and text. You can access MyEnlighten through your PC, tablet or smartphone and use it to keep track of your investment:

- Verify system health and performance at-a-glance
- View energy production by month, day or hour
- Analyse performance against historical weather data
- Brag about your system performance on Twitter, Facebook or Google+

To learn more about the Enphase system, visit [enphase.com/uk/smartersolar](http://enphase.com/uk/smartersolar)

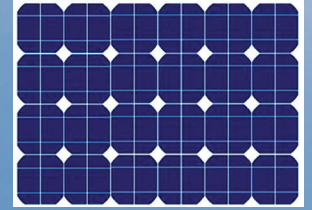
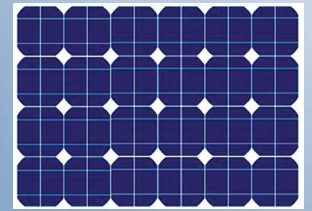
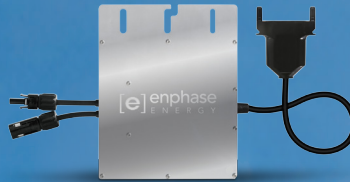


# HERE'S HOW IT WORKS

The Enphase System consists of three advanced components that work together to make solar more productive, more reliable and easier to own.

## 1 Enphase® Microinverters

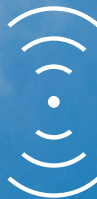
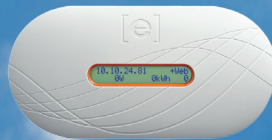
Installed beneath each solar panel, Enphase Microinverters maximise energy production and convert DC power into low-voltage AC electricity. They offer greater design flexibility to fit on different roof planes and multiple buildings.



Each solar panel has its own Enphase Microinverter.

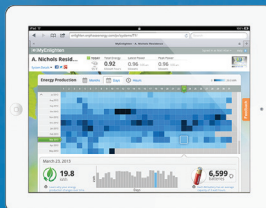
## 2 Envoy® Communications Gateway

The Envoy acts as a messenger between your microinverters and Enlighten software, collecting energy production data over your home's existing electrical wiring and sending the data through your Internet router to Enphase's data centres.



## 3 Enlighten® Software

MyEnlighten provides system monitoring from any PC, tablet, or smartphone, letting you know your system is performing as expected. Solar professionals use Enlighten software to remotely manage and troubleshoot your system.



Ask your Enphase installer for a quote today.

[enphase.com/uk](http://enphase.com/uk)

