

# Get smarter about your home energy

See your production and usage in one place

The Enphase System lets you monitor not only your energy production, but also your home's energy usage.<sup>1</sup> This added insight can help you save more on your energy bill.



According to the Energy Saving Trust you could find that your energy usage drops by between 5% and 15% in the first year of using an energy monitor.<sup>2</sup>



## Use less, save more

Monitoring your energy usage is easy with the Enphase MyEnlighten app and leads to real savings.

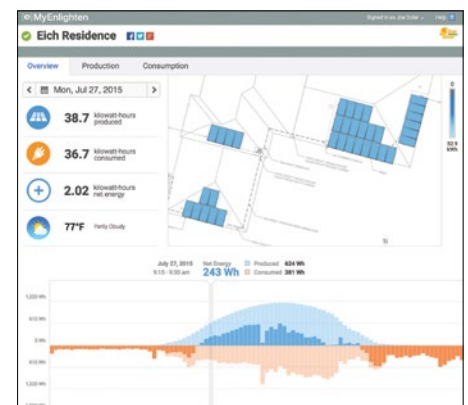
Solar isn't a free pass to leave your lights on. Conserve power to make the most of your energy savings.

Smart consumption is a great way to see a quicker payback on your solar investment.



## Stay current on your current →

- The Enphase MyEnlighten app lets you easily track system production and usage.
- View usage in monthly, daily, or 15-minute intervals to spot patterns over time and see where you might be wasting energy.



<sup>1</sup> The Enphase Envoy-S Metered and Consumption CTs are required for energy usage monitoring.

<sup>2</sup> Source: <http://www.uswitch.com/energy-saving/guides/energy-monitors/>

# Get ready for energy storage

Know your usage to get battery-ready

Energy storage is almost here. If you're interested in taking advantage, your first step is understanding your home energy usage. The Enphase System gives you the insight you need to make a smarter choice.



## See your trends

- View your monthly usage over time for an accurate picture of your home energy demands.
- Use that knowledge to anticipate your future storage needs.



Track your monthly usage over time.



## Find the right fit

- Find out if a storage investment makes sense based on your usage.
- Don't overspend on a storage system that's too big. Your usage info will help you and your installer build a system that's just the right size for your needs.

## Why storage?

Many people are excited about the potential of energy storage because it solves a fundamental solar dilemma. Let's explain the basics:

- Solar production peaks in midday, when the sun shines brightest.
- Energy use is typically highest in the morning and evening.
- Storage lets you save the energy you produce during the day for later, when you need it most.

## Why now?

Three evolving trends are creating the need for storage:

- Expected rise in utility rates
- Changing Feed-in-Tariff policies, which pay you when you generate electricity from Solar PV
- Chemistry advancements resulting in safer, longer-lasting, and more affordable batteries



<https://enphase.com/en-uk/products-and-services/whats-next>

To add energy usage monitoring to your system, **contact your solar installer.**