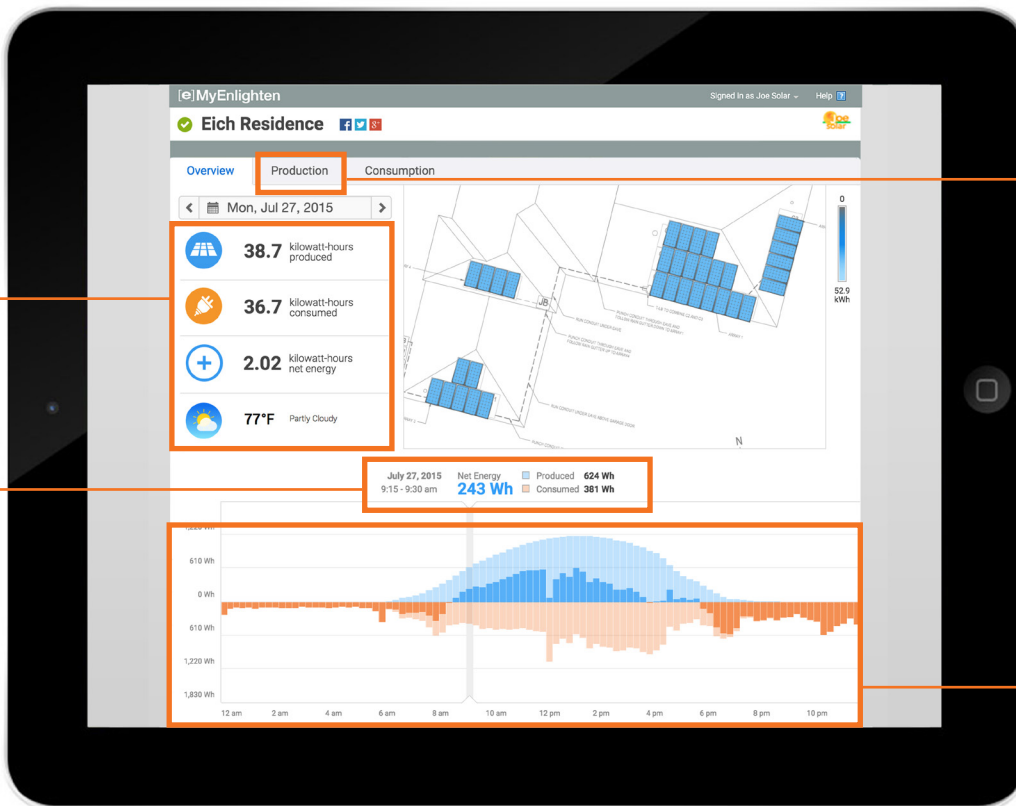


# Total Energy Insight

Homeowners can now monitor Enphase system production and home energy consumption from any web-connected device, delivering the insight needed to make the most of going solar.

MyEnlighten provides at-a-glance detail on system production and home consumption, giving your customers total energy insight.

We'll do the math. Your customers can see reports of how much energy they are producing and consuming at any time.



Monitor Enphase system production in greater detail, and see historical weather data to understand variations in performance.



Easily visualize trends in energy production or consumption. Blue represents production while the orange indicates consumption.



## NEW Consumption Monitoring View

See home energy consumption data in monthly, daily or fifteen minute intervals.

Consumption monitoring and net energy reporting is enabled through the Enphase® Envoy-S Metered, the next generation gateway.

To find out more about consumption monitoring in Enlighten, visit [enphase.com/enlighten](http://enphase.com/enlighten)

---

# More Value for Your Customers

The next generation **Enphase® Envoy-S** gateway, a key component of the Enphase Energy Management System, provides home energy consumption and system production monitoring.



## Enphase® Envoy-S Metered

- Enables remote maintenance and long-term management
- Flexible networking using either Wi-Fi or cellular connection
- Rugged and reliable with a 5-year warranty
- Outdoor Ready



### Enphase® Installer Toolkit Mobile App

- Enables faster system commissioning and the confidence to know an installation was a success.
- Scan serial numbers using your phone's camera
- Available for Android and iPhone

---

To find out more about Enphase Envoy-S, visit [enphase.com/envoy](http://enphase.com/envoy)

