



13 Ransomware Statistics **All Businesses MUST Know**

Datto surveyed **2400+** IT professionals who deal with ransomware attacks everyday.

Here's what we learned.

Ransomware attacks continue to climb

From Q2 2016 - Q2 2018

79% of MSPs

report ransomware attacks against SMBs.

In the first half of 2018 alone, **55% report attacks against clients.**



35% of MSPs

report that their clients suffered
multiple attacks in the same day

**This number is up from 26%
year-over-year.**

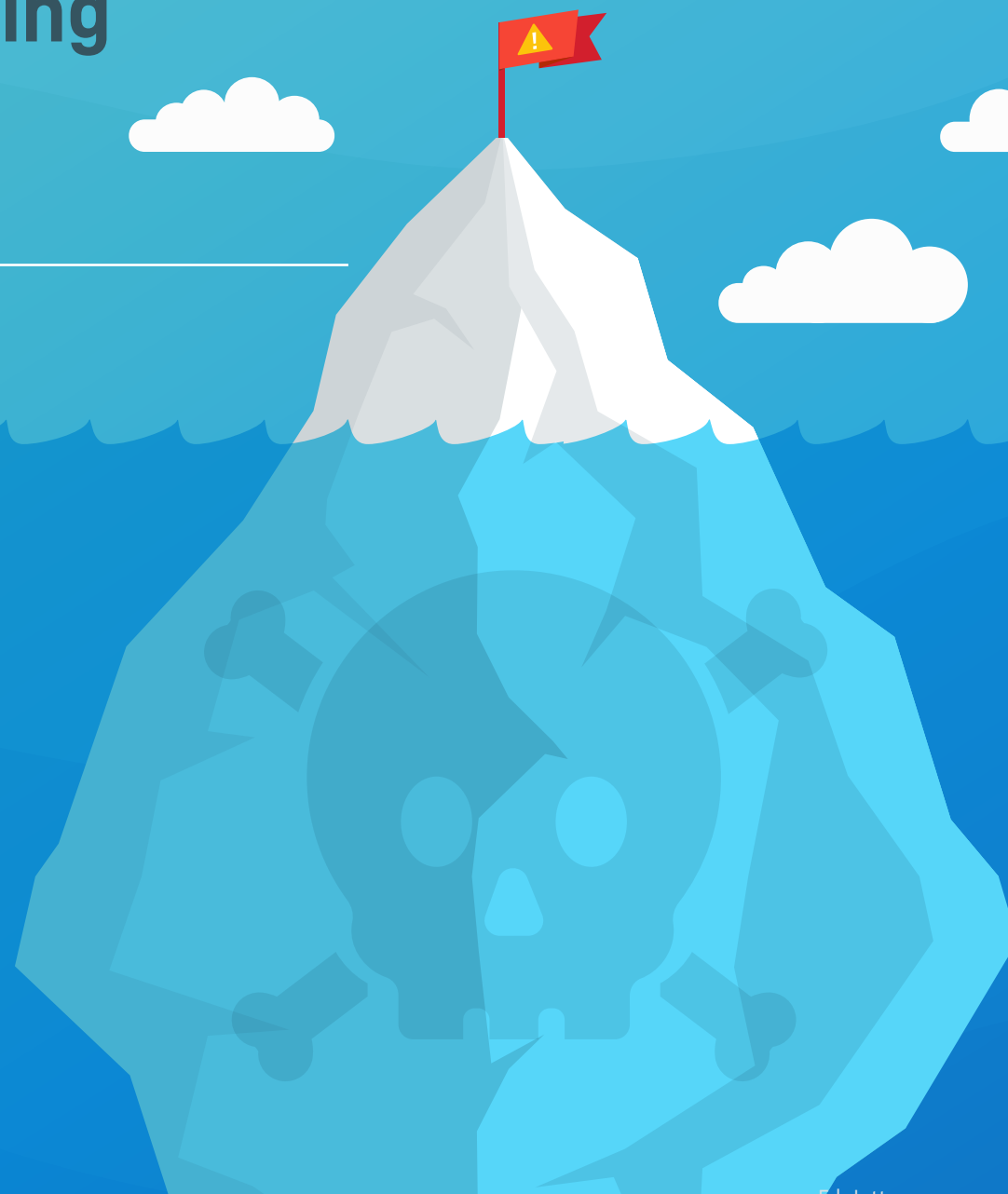


However, we're likely only seeing the tip of the iceberg.

IT pros report that

only 1 in 4

of those attacks are reported to authorities, which means the problem is likely **bigger than we know.**



CryptoLocker and WannaCry reign supreme as the most common strains of ransomware, but new, vicious strains pop up every day.



SamSam, anyone?

I * * * * *

You Won't Believe...

An Apple operating system isn't a silver bullet.



In the first half of 2018, the number of IT professionals reporting OS/iOS attacks is up by

nearly 500%
year-over-year.

The cloud is NOT immune.

Of the IT pros that report cloud-based malware infections, **nearly 50%** called out Office 365 as the target.



So how devastating can a ransomware attack be for a business?



**67% report that victimized clients
experienced a loss of business productivity**



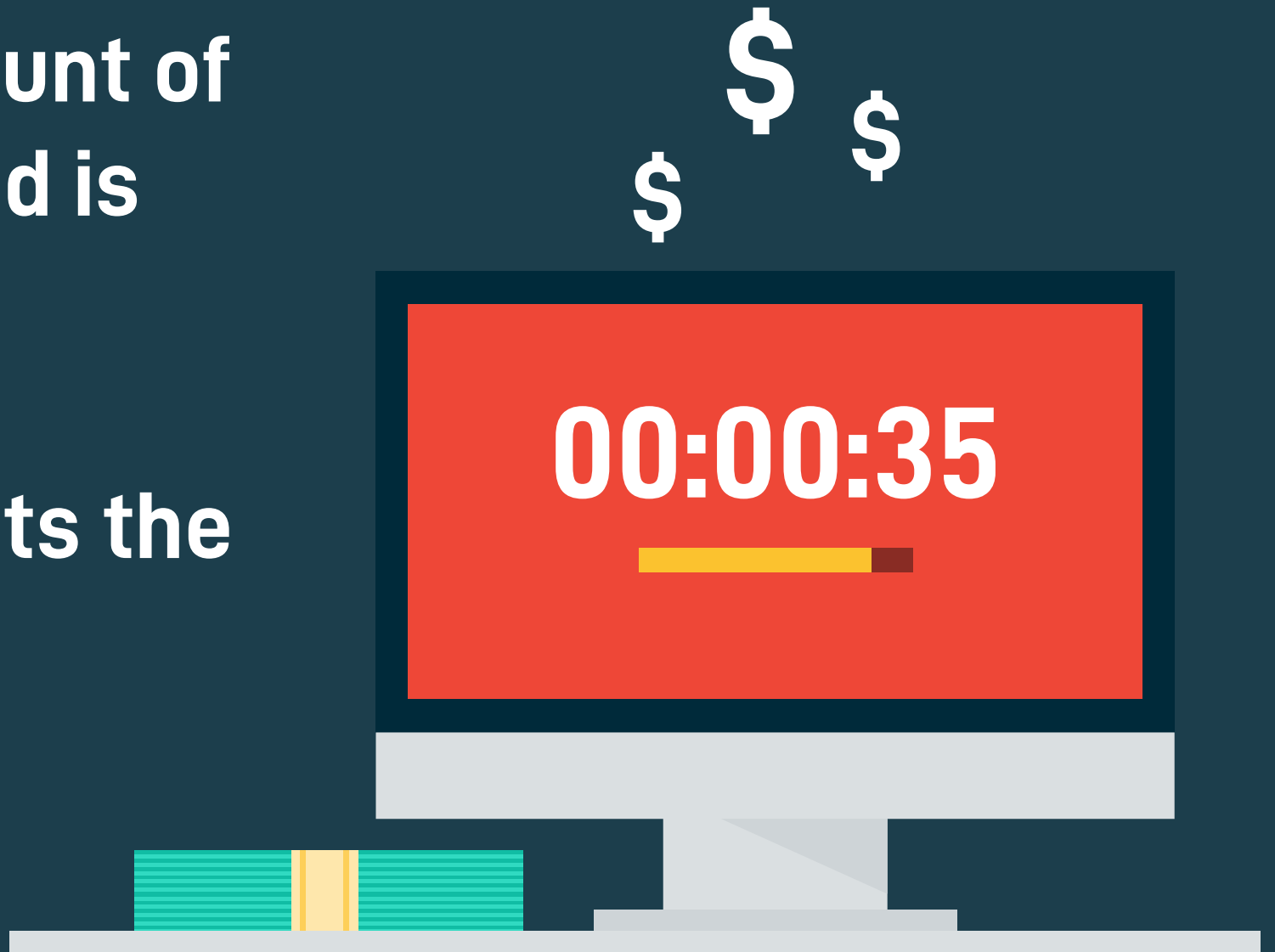
**More than half witnessed
business-threatening downtime**





The average amount of ransom requested is roughly **\$4,300.**

But downtime cuts the deepest...



The average cost of downtime from a single attack rings in at an estimated

\$46,800!



That's Right.

The cost of downtime can be
10x higher
than the ransom requested.

\$4,300

Average
Ransom

\$46,800

Average Cost
of Downtime



Today's IT professionals are calling out the lack of cybersecurity training across businesses worldwide.

For more information please contact:

Ann Westerheim | President

Phone: 978-692-4200

Email: awesterheim@ekaru.com

Ekaru | <https://www.ekaru.com>

319 Littleton Rd, Suite 105 Westford, MA, 01886

