



# Commercial Property Report

Risk No.	555555	Public Protection Unit	Everett, PC 03
Address	1420 3 <sup>rd</sup> Street SE Everett, WA 98201-5040	Risk Protection Class	PC 04 / 04
Inspection Date	12/28/2012	Distance to Station	1 miles
Construction	3, Non-combustible (-R1)	Building CSP*	0844 / 0844
Year Built	1980	RCP*	2304 / 2304
Stories	3, 0 Basements	Earthquake Class	3B
Height	32 (ft.)	Automatic Sprinkler	Yes
Total Area	35,400 (sq. ft.)	Qualified Sprinkler	Yes
Combustible	0%	Reason	
Incombustible			

*\*Report contemplates values before & after WSRB Rule 85 filing of Oct 1, 2012. (Previous Value / Current Value)*

<b>WALLS</b>		
<b>Percentage</b>	<b>Surface</b>	<b>Support</b>
9	Stucco	On Wood Frame
15	Tilt-up Concrete >=6	
76	Metal Siding	On Metal Frame

<b>Exterior Attachments</b>
<b>Type</b>
Canopy
Canopy

**BUILDING**

<b>ROOF</b>	
<b>% of Area</b>	100%
<b>Surface</b>	Metal Deck
<b>Deck</b>	-
<b>Truss/Joist</b>	-
<b>Support</b>	Metal Frame

<b>FLOOR</b>	
<b>Floor Area 1</b>	100%
<b>Deck</b>	Concrete Slab on Metal Pan on Metal Frame
<b>Truss/Joist</b>	-
<b>Support</b>	-

**CONSTRUCTION INTERIOR FINISH**

<b>INTERIOR SHEATHING</b>	
Acoustical Tile Ceilings	
Drywall Partition Walls	

<b>CONCEALED SPACES</b>	
Roof Concealed Spaces (sq. ft.)	Other Concealed Spaces (sq. ft.)

<b>CONDITION NOTES</b>

**FOUNDATION** Closed

**OCCUPANCY**
**Odom**

**Type:** Distributors – alcoholic beverages including beer and wine; or beer primarily.

**Description:** Beverage distributor. Locked.

<b>Hazard Type</b>	<b>Hazard Details</b>
Motor Vehicle Storage	Storage of Motor Vehicles

**OCCUPANCY**
**PDT Machine**

**Type:** More than limited combustibles  
**Description:** Machine shop, precision. Computer operated milling machines.

**Barlow's**

**Type:** Restaurants With cooking  
**Description:** Restaurant and bar with gas cooking equipment including 2 fryers, 2 grills, 1 broiler, a 6 burner range, 1 salamander, and an 8 burner range protected by a UL300 wet chemical fire suppression system last serviced 12/2013. New hood in 12/2013 with cleaning company already under contract, vents through concealed roof space. Greasy cloth rags are switched out daily and collected in an open hamper until picked up weekly by a linen company. A k-type extinguisher is provided.

<b><u>Hazard Type</u></b>	<b><u>Hazard Details</u></b>
Cooking and Baking	Regular cooking; All Equipment Protected By Approved Automatic Extinguishing System
Cooking and Baking	Hood Appears Standard, Could Not Determine Details Of Vent Through Concealed Space, With Standard Extinguishing System
Heat Producing Device	Gas fuel, low temperature heat producing device
Heated Enclosure	

**EXPOSURE**
**Source**


**Caption:** Office and Service Occupancies

**Distance (ft.):** 34

**IN-OPEN EXPOSURE**
**Source**
**ALARM SERVICE**



<b>INTERIOR PROTECTION</b>
<b>Protective Credit</b>
Extinguishers Could Not be Verified

<b>AUTOMATIC SPRINKLER</b>				
<b>System</b>				
<b>Name</b>	<b>Riser Diameter</b>	<b>Type</b>	<b>Year Installed</b>	<b>Year Modified</b>
System 1	4"	Wet	1/1/2010	

<b>SYSTEM DESIGN</b>						
<b>Sprinklered</b>	<b>Type</b>	<b>Sprinkler Head Density GPM (sq. ft.)</b>	<b>Coverage Area (sq. ft.)</b>	<b>ESFR No. Of heads</b>	<b>ESFR Min PSI Per Head</b>	<b>Demand at Base of Riser</b>
14%	Hydraulic	.10	962			126 @ 40
85%	Hydraulic	.15	1950			385 @ 48

<b>Sprinkler Heads</b>		
<b>Type</b>	<b>Head Size</b>	<b>Fuse Temperature</b>
Upright	1/2 in.	155
Pendant	1/2 in.	155

<b>Water Supply</b>				
<b>Type</b>	<b>Main Connection Distance</b>	<b>Main Connection Diameter</b>	<b>Main Layout</b>	<b>Main Diameter</b>
Public	80 (ft.)	6 in.	Circulating	8" diameter

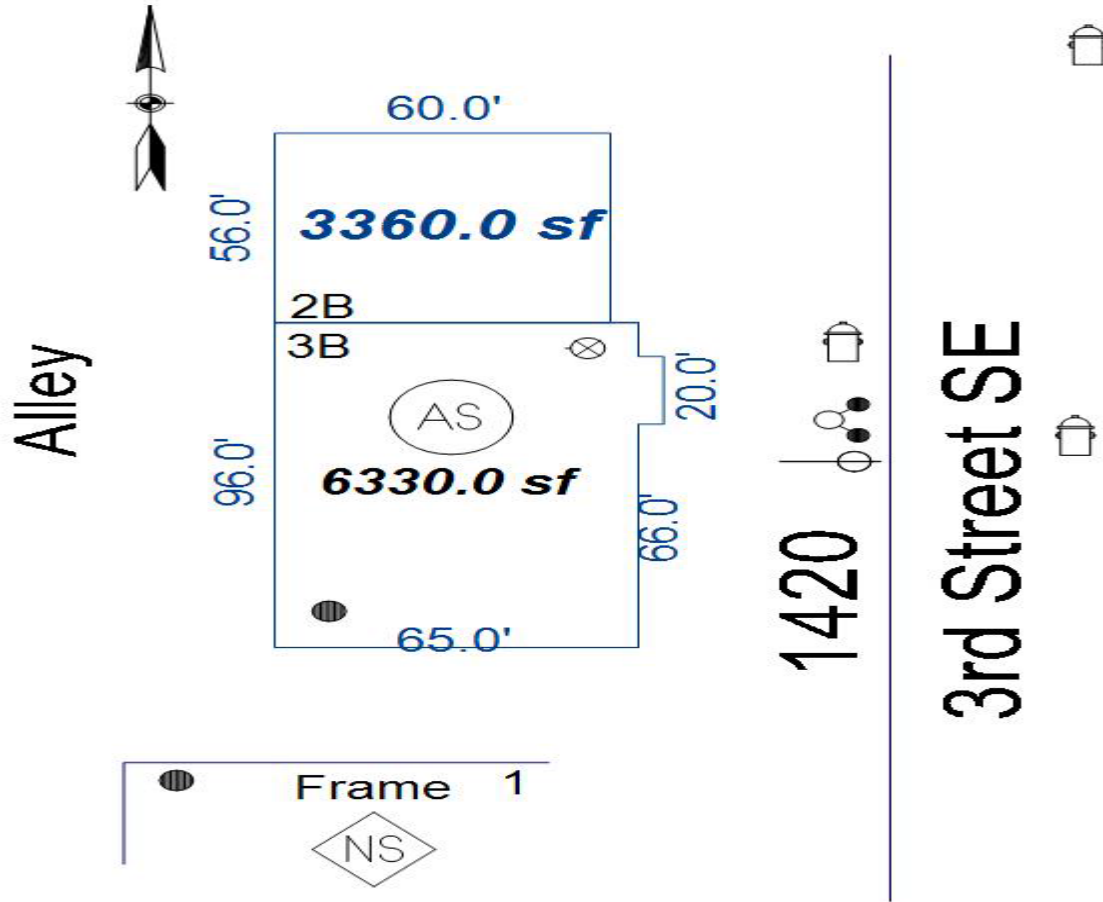
<b>Hydrant Flow Test</b>				
<b>Location</b>	<b>Static PSI</b>	<b>Residual PSI</b>	<b>Flow At Residual PSI</b>	<b>Test Date</b>
1420 3 <sup>rd</sup> St SE	99	20	5000	1/1/2009

<b>Mechanical Grading - 70</b>		
<u>Category</u>	<u>Deficiency Type</u>	<u>Deficiency Point</u>
Adequacy of Water Supply	Flow Inadequate For Sprinkler Demand	0
Unsprinklered Portion	Unsprinklered Areas Deficiency	3
Sprinklers - Obstructed	Minor AS heads obstructed	2
Equipment	No Underground Cntrctr Mtrl & Test Certs	7
Reliability of Water Supply	No Secondary Water Supply	10
Miscellaneous	Incomplete Sprinkler Plans Provided	3
Maintenance	At Least 1 Missing Main Drain Test	5

**RISK PHOTO**



Building Exterior

**Diagram**


Building Diagram

The Washington Surveying & Rating Bureau (WSRB) collects information for its customers and subscribers. The information is intended for use by those customers and subscribers for insurance underwriting and rating purposes. The sole purpose of this report is to provide insurance underwriting and rating information about the particular location identified above. This report does not warrant the safety or health of persons in or near the location identified above. This report does not warrant that the requirements of any standard or any federal, state, county or municipal statute, regulation, code or ordinance have or have not been met.