

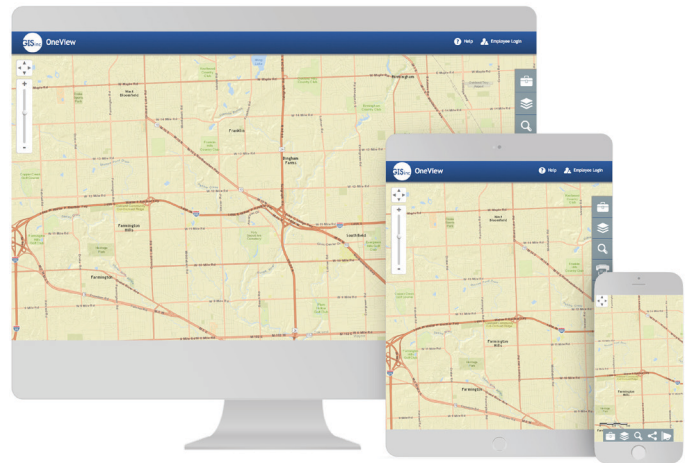
Solutions

GISinc OneView

Overview

GISinc OneView is designed for organizations looking to extend the reach of their rich GIS data repository both externally, with its citizens, and internally across their enterprise. It delivers a solution that not only provides web access to an intuitive, feature-rich application, but one that will meet the growing demand to interface with GIS data via mobile devices such as tablets and smartphones.

Aimed to complement your organization's targeted, focused application deployment strategy, GISinc OneView will become the multi-purpose application in your solution offerings.



GISinc OneView Key Features

Mobile Ready - Developed with HTML5/JavaScript, GISinc OneView is supported on multiple mobile platforms including Apple and Android smartphones and tablets.

Social Media - The social media share map button allows you to share your map several different ways. Users can compose an email or share the map on Facebook or Twitter.

AutoComplete Searches - GISinc OneView delivers AutoComplete for its search tool as well as many ways to search, select and interact with data.

Geolocation - Allows you to get a user's location in the field from a tablet or smartphone.

Data Adding Functionality - Allows users to add data from ArcGIS Online and drag and drop CSV sources.

Secure Access - GISinc OneView offers secure access via a login control that manages layer and tool access. This controls the number of layers a user will see in the layer list as well as the number of tools available. Access is facilitated by the ArcGIS Enterprise built-in security.

Tri-View - Allows users to click a point on the map and open a new window divided into three sections referencing public web services (Google Maps, Google Street View and Bing Bird's eye view).

Advanced Printing - Print PDF & JPEG to layout templates authored in ArcMap and saved as a map template document (MXT).

Want to learn more about GISinc OneView? Contact us today!

