

## Solutions

### Range Management Toolkit

#### Overview

The Range Management Toolkit (RMTK) is comprised of a suite of applications that are deployed and operational throughout Army and Marine Corp ranges and incorporated into standard Range Safety and GIS for Range Managers' Training Classes.

#### RMTK Applications

**Surface Danger Zone (SDZ)** - Creates a danger area view for ground to ground weapons

**Weapons Danger Zone (WDZ)** - Creates a danger area view for air to ground weapons

**Laser Range Management Tool (LRMT)** - Used to qualify ranges for laser usage

**Explosive Training Range Tool (ETR)** - Creates a safety area view for explosives training

**On-Range Ammunition Handling Tool (ORAH)** - Creates a safety area view for on-range ammunition storage

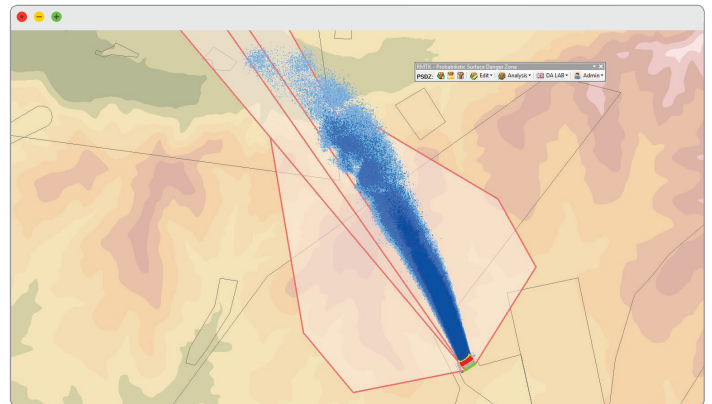
**Range Development & Planning (RDAP)** - Used by the Army to create new training ranges

**Range Design Management Tool (RDMT)** - Used by the Marine Corps to design new training ranges

**Foreign Surface Danger Zone (FSDZ)** - Creates safety area view for foreign allies

**Probabilistic Surface Danger Zone (PSDZ)** - Creates safety areas using mathematical modeling tools vs. deterministic footprints used by SDZs

**Training Exercise Planning System (TEPS)** - Used to plan training exercises on ranges



Want to learn more about the Range Management Toolkit? Contact us today!

DUNS: 826706848 | CAGE: 1FQD9

