



*Your Trusted Partner for*

# Federal Geospatial Solutions





## Energy Sustainability

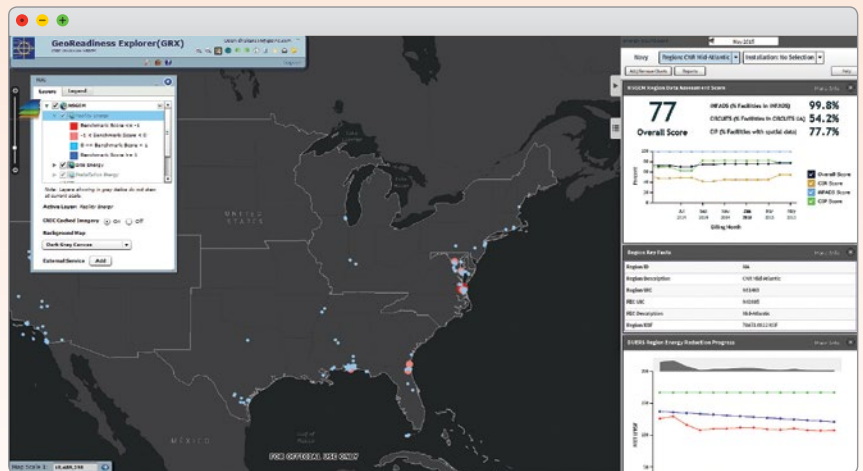
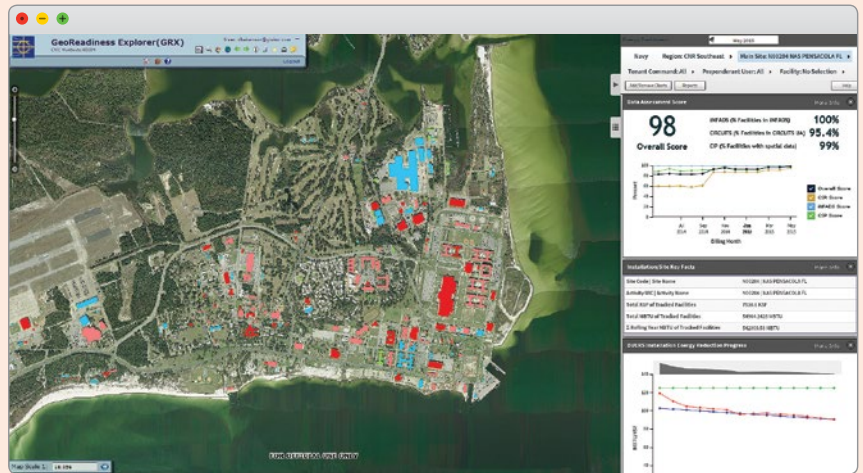
Whether you need to monitor energy consumption at facility level, on a global scale, or somewhere in between, we can create a solution that provides detailed information on how energy is being consumed on federal properties – enabling informed decisions to meet energy sustainability goals.

## PROJECT PROFILE

### Commander Navy Installations Command, Washington DC

GISinc worked with the Navy to develop the Navy Shore Geospatial Energy Module (NSGEM) to assist Navy installations with monitoring energy consumption in relation to Navy Energy Reduction Goals. NSGEM provides Navy leadership visibility on energy consumption at the facility, installation, region, and worldwide scale. This is achieved through the use of geospatial data, charts, and graphs. NSGEM provides this insight by utilizing a variety of Navy systems, such as, real property and asset management. It provides installation personnel the tools they need to address the highest energy consumers.

NSGEM strives to help the Navy achieve legal compliance and greater energy security through increased efficiency; while also helping reduce 50% of overall energy consumption by 2020. As a result of this project, our client was honored with Esri's Special Achievement in GIS award.





## Range Management & Safety

Since 2001, we have been developing and supporting a suite of ArcGIS applications for the US Army and US Marine range communities. These tools are bundled into a set of ArcGIS Toolbars called the Range Managers Toolkit (RMTK), which supports both Range Safety and planning activities. The core application supports the generation of Surface Danger Zones (SDZ) for weapons systems defined in DA PAM 385-63. It allows Range Safety Officers and Range Control Officers to interactively create SDZs by selecting weapons systems, target points, target media, and firing points. Users are able to identify firing and target locations interactively on the map interface, by entering grid coordinates, or selecting existing points on the map.

## Medical / Health

What does location have to do with healthcare? Everything. More and more, we're leveraging geospatial technology and location-based analytics to better address the health needs of our local communities and make decisions that can mean vast improvements in patient care. Whether it's designing a system that uses health-related data to visualize and analyze trends in certain geographies, or using technology to anonymously track the locations of people and assets in a facility, let us help you use the power of location in your everyday decision-making.

## Cemetery Management

Using GIS technology, we can create a system to assist you in daily cemetery operations. Whether it's collecting data for thousands of grave markers, digitizing PDF maps, building operations dashboards, or even a mobile application for the public to locate the graves of their loved ones, we offer solutions to help you in your mission to honor the memory of the men and women who served in our Armed Forces. We initiated the project by determining the scope, establishing primary objectives, and selecting the optimal analytical processes to meet their goals.

## Land Management

---

GISinc is supporting several large Agencies responsible for managing and regulating US Lands including: BLM, Forest Service, and the EPA. From consolidating local data into national standard data sets, through implementing and maintaining enterprise GIS infrastructure, we understand the challenges and have been solving these issues for years.

## Environmental

For environmental tasks we make it easier for scientists to gain better insight for more informed decisions, we enable project managers to better coordinate staff assignments, and we expand the opportunity for spatial insight and creative growth at the program level.

You can rely on us for technical and organizational support when it comes to managing large volumes of spatial data... or if you need analytical support at the project level. We can offer suggestions for spatial workflows and ideas that highlight how certain tools can be used to augment a project or produce accurate results in an efficient manner. We'll meet with project managers to fully understand the background and goals of their projects and assist them in defining the scope, establishing primary objectives, and selecting the optimal analytical processes to meet their goals.

## PROJECT PROFILE

### BLM

GISinc has been supporting the BLM Enterprise GIS (eGIS) providing Enterprise Architecture expertise, day to day operations, and system development activities. The BLM eGIS is a GIS Infrastructure as a Service providing databases and software to over 1000 users across BLM. We provide the architecture planning and analysis, configuration control processes, and testing and rollout of new versions of the software footprint.

GISinc is also supporting the BLM through development of Nation-wide standardized GIS data layers in support of landscape scale land use planning. A team of onsite analysts across the state offices and the National Operations Center are consolidating the disparate data sources and migrating priority layers into a set of standard layers. Our process includes weekly replication from source to national level providing automated QA/QC functions ensuring that the national data are of appropriate quality for decision making.



Beaver Creek, Alaska. The Sprint team worked on compiling wild and scenic river features into a national dataset for BLM managed lands.



*Want to see more of our project profiles?*  
**Visit our GISinc Brag Book!**



<http://gisinc.com/brag-book>

### How We Do It

Our process begins with an evaluation of your needs. We take the time to get to know you and to gain an understanding of your mission and how we can help you achieve success in your mission.

Next, we conduct face-to-face interviews with your team to help us develop a strategy or roadmap for your solution, including technology hardware and software recommendations, staffing, training, and budget requirements. Our staff of over 160 GIS professionals can meet your location technology needs before, during, and after your GIS implementation.

Need onsite support? No problem! Every day our onsite teams support our clients with:

- Analysis
- Data Collection and Integration
- Project Management
- System Support and More

# GISinc Qualifications

## More Than 25 Years of Business Experience Focusing Exclusively on GIS

We are an industry-leading geospatial firm whose core purpose is to create insight through location technology. We specialize in GIS services for federal, state, local and private clients, and have maintained that singular focus since our founding in 1991.

## GISinc is a Small Business

- Qualifies under NAICS code 541512 (\$27.5M) to support procurement of services
- Sophisticated in processes and controls yet agile in our service delivery
- As an employee owned company, all GISinc employees share in the reward of success

## GISinc is 1 of Only 8 Esri Platinum Business Partners

We are recognized for providing enhanced professional services and industry expertise; less than 1% of Esri partners worldwide have reached this highest tier of distinction.

- Expertise with geospatial technology used by federal government organizations
- Access to product teams and early release information to support delivery and new technology planning
- Premium support to elevate technical requests and quickly respond to and resolve critical issues

## Performing the Following for the Federal Government Since 1991

- Life-cycle project and program management
- Enterprise geospatial systems support and planning
- Production level Geospatial systems and applications development
- Geospatial data management, analysis and visualization support
- GIS education, training and outreach

## 160 GISinc Team Members

GISinc team members deliver innovative, high-performing, and right-sized enterprise mission critical and production grade geospatial technology solutions. We have over 85 team members who currently hold DoD credentials, a security clearance or are registered in JPAS. We hold an active Secret Facility clearance and are pursuing a Top Secret Facility clearance.

## Proven History of Success

We have been supporting enterprise business systems and applications for Federal Civilian and Defense Agencies through multiple IDIQ and omnibus contracts. We have completed over 650 GIS projects valued at \$64M in the last four years.

## Strong Partner Portfolio

We maintain strong partner relationships to meet diverse requirements and provide industry and domain expertise across a range of business lines and support areas.

# Federal Government Contracts

We understand the complexities and challenges inherent to federal contracting and procurement. Which is why we are working to build a diverse federal contract portfolio as Prime and Subconsultant that offers you a convenient set of options – saving valuable time and energy for the project.

We possess strong working knowledge of our federal contract vehicles, and take the time to find the best possible vehicle, even when it isn't readily available. We also consider the contracting office as part of any project team and extend to their personnel the same level of service and commitment as exemplified on our projects.

GISinc is a Small Business according to Federal Contracting rules in select industries described in the North American Industry Classification System (NAICS). Under these classifications, we qualify under the following NAICS Codes:

- 511210 – Software Publishers
- 541511 – Custom Computer Programming Services
- 541512 – Computer Systems Design Services
- 541513 – Computer Facilities Management Services
- 541519 – Other Computer Related Services
- 541330 – Engineering Services Except Military and Aerospace Equipment and Military Weapons
- 541712 – Research and Development in the Physical, Engineering, and Life Sciences (except Biotechnology)

We hold and have access to the following federal government contracts to ease the procurement and purchasing of GIS services and solutions for our clients:

- GSA Schedule 70 GS-35F-0682R
- Bureau of Land Management (BLM) L16PA00032 GIS BP
- Navy GeoReadiness Enterprise System (GES) Lifecycle Maintenance – HC1028-13-A-0015
- Seaport-E (Prime and Sub) – N00178-14-D-7722 / Multiple Award Contract Vehicle (MAC)
- U.S. Army Training Support System (TSS) (Calibre Systems Team) – W911S0-11-D-0046
- FAA Accelerated and Simplified Tasks (eFAST) – DTFAWA13A-00036
- Navy (C.L.E.A.N.) – N62470-11-D-8012

## Certifications

GISinc has diverse process and technical certifications: CISA, ITIL, COMP TIA Security+, PMP, Oracle Certified Professional, Certified GIS Professional, ASPRS, Six Sigma, and Esri Certified Associates:

- Enterprise System Design Associate
- Enterprise Administration Associate
- Enterprise Geodatabase Management Associate
- Web Application Developer Associate
- ArcGIS Desktop Developer Associate
- ArcGIS Desktop Associate and ArcGIS Desktop Professional

## Locations



(205) 941-0442 • [federal\\_team@gisinc.com](mailto:federal_team@gisinc.com)



*Inspired by*  
**Location**



[gisinc.com](http://gisinc.com)

