



Your Trusted Partner for Distributed & Connected GIS **State & Local**



Why GISinc?

- 100% GIS Centric Service Firm
- 160 Passionate Professionals in 35 states
- Employee Owned Small Business
- 75% Repeat Business
- We Deliver Leading Edge Technology
- 98% Customer Satisfaction Rating
- 400 Customers in 50 States
- Esri Platinum Partner
- Esri Platform Expertise
- Cityworks Platinum Partner
- Innovating the Internet of Things for the GIS Community

Core Capabilities

Our services are designed to help you maximize your investment in Esri's ArcGIS Platform. Wherever you find yourself on the GIS maturity curve, we can help! We have services to help you start, extend or complement your distributed & connected GIS.

Start



ArcGIS
Online



System
Integration

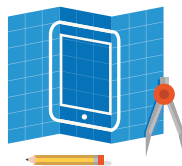


Land Records
Modernization

Extend



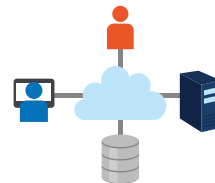
ArcGIS for
Local Government



Application
Development



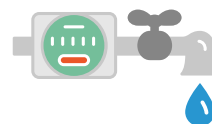
GISinc
OneView



ArcGIS 10.5
Architecture & Services



Cityworks
Implementation



Water Utility
Service Bundles

Complement



GIS
HealthCheck®



Discovery
Workshop



Outbreak Surveillance
& Control (OSC)

Who We Serve

City & County

26 years, and counting, of providing services to the City and County Governments. Today's implementation pattern is centered around delivering smart community solutions.

City of Austin, TX - We are supporting the City with a wide-range of solutions including a GIS strategy roadmap, stormwater data processing, advanced cartography and high-end ArcGIS system architecture designs and deployments.

Walworth County, WI - One of the first counties in WI to adopt Esri's ArcGIS for Local Governments initiative. Today their Maps & Apps Gallery includes over 18 public facing information products.



Regional

Regional Governments play a critical leadership role for the macro vision of many local communities nationwide. GISinc has served many Regional Governments with location technology solutions that support their missions.

Maricopa Association of Governments, AZ - GISinc provides high-end application development services for MAG supporting many of their demographic, economic and employment interactive web mapping solutions.



State

Location technology capabilities today provide the backbone that support several State Government initiatives of data aggregation, dissemination and transparency. GISinc has services aimed to support all of these initiatives and more.

Florida Division of Emergency Management - Information is the critical component when planning and managing an event. GISinc recently delivered several information products (location solutions) supporting FLDEM's preparedness and response.



Airports

GISinc's Smart Airport initiative provides solutions for Enterprise GIS, Asset Management and the Internet of Things (IoT) as part of our Geolot Platform.

Hartsfield-Jackson Atlanta International Airport - GISinc is serving ATL with all our aviation solutions (Enterprise GIS, Asset Management, and IoT) helping them become one of Esri's most advanced Airport ArcGIS platform implementations in the world.



"We have been extremely pleased with the ability of GISinc to deliver both custom and traditional enterprise solutions for the Atlanta Airport. Their professional team has provided highly effective systems integration and application development skills to solve geospatial and business challenges, propelling the world's busiest airport to greater operational efficiency, better customer service, and progressive public safety."

David Wright, GIS Manager, Hartsfield-Jackson Atlanta International Airport

GIS IT

The traditional home for GIS in local and state governments and one that GISinc continues to serve with location technology and IoT system architectures and solutions.

City of San Mateo, CA - Some of our more interesting, citizen centric solutions (Yard Sale app, Christmas Light app, etc.) have come from the vision at San Mateo IT. A testament to the close collaboration between GIS and IT.



Land Records

One of the core pillars of local government and one that GISinc offers a total solution. Everything from system Computer-Assisted Mass Appraisal (CAMA) integration and web/mobile solution deployments to parcel fabric and parcel maintenance.

Roanoke County, VA - GISinc was challenged to create solutions that provide citizens with access to information with one click. Successfully delivered through many apps in the County's maps and apps gallery the County is nationally recognized and received many technology awards.



"Our partnership with GISinc continues to grow as well as the benefits to the citizens of Roanoke County."

David Wray, GIS Manager, Roanoke County

NGO/Non-Profit

NGO/NPOs play a large role in supporting and extending the reach of many community initiatives. Location technology can deliver solutions that foster communication and collaboration with multiple agencies.

National Alliance of Preservation Commissions (NAPC) - GISinc helped NAPC create CRSurveyor, an ArcGIS for Server solution that assists in the inventory of our nation's Cultural Resources. Used in the field to locate and document its utility, and what exists on the property.



Public Health

Outbreak, Surveillance and Control (OSC) GISinc's services bundle that provides location technology solutions for Public Health & Public Works organizations. Solutions vary from communicative and outreach centric to surveillance and control.

Hillsborough County, FL - The control of a vector, like mosquitos, is often tasked to public works departments. GISinc partnered with the County to deploy several turnkey solutions that are making a difference with controlling the vector and subsequent spread of disease.



"I want to thank GISinc for the incredibly successful jumpstart for mosquito control. You truly did an outstanding job."

Fred Hartless, GIS Project Manager, Hillsborough County, FL

Public Safety

GISinc has deployed several public safety solutions of the years supporting Fire, EMS and Police. Today we are supporting with solutions for Next Generation 911 (NG911).

North Central Texas Council of Governments (NCTCOG), TX - GISinc is supporting NCTCOG's data replication process with member agencies in an effort that is driving their NG911 process. This includes data schema and process automation scripting.



Public Works

Another pillar in local government, the Public Works mantra of better, faster and cheaper can all be realized with location technology. Quick identification and maintenance of assets is critical to all communities. GISinc can help!

City of Springfield, IL - A great example of how establishing a strong foundation with the ArcGIS Platform can lead to extending and complementing the platform with solutions and workflows brought out through Cityworks AMS and PLL implementations.



Universities

GISinc's GeoloT platform offer universities many solutions supporting the smart campus initiative. Solutions that deliver real-time asset and space management as well as wayfinding.

University of Washington - GISinc recently developed and deployed a smart campus wayfinding solution that helps students traverse the campus outdoors and indoors. A framework for limitless on campus engagement.



"GISinc has been able to meet an existing deadline for project that was set before the contract was signed and has gone above and beyond to deliver a product that is better than scoped while still meeting the time and budget requirements."

Aaron Cheuvront, MAPS Systems Manager, University of Washington

Water Utilities

Operational awareness and efficiency. Two focal points anytime we engage with our water utility customers with location technology solutions. System integration and quick deployment solutions available to help this community fast track implementations for an immediate ROI.

Opelika Utilities, AL - Opelika Utilities has location technology solutions for everything from digital transformation to web/mobile solutions to cloud deployments to system integrations. Proud recipient of the 2017 Esri SAG Award.



Meet Our Partners

We strategically align ourselves with best-of-breed GIS partners to address business challenges facing state and local organizations by creating insight into location based data with enterprise services and solutions.



OSIsoft's PI System enables users to manage assets, mitigate risks, comply with regulations, improve processes, drive innovation, and make business decisions in real-time. GISinc extends and complements the capability that Esri and OSIsoft creates, by bringing space and time together.



Cityworks empowers GIS to manage both physical infrastructure and land-focused asset management. As a Cityworks Platinum partner, GISinc is equipped to handle an organizations professional service needs for implementation, training, and integrations.



Esri built ArcGIS, the world's most powerful mapping and spatial analytics software. GISinc has been an Authorized Business Partner since inception and as a Platinum Partner, offers Esri products and services that help organizations get started, extend, and complement the Platform.

Panda Consulting Your Partners in GIS

Panda Consulting is a professional services firm specializing in the maintenance and integration of the Parcel Fabric within the Local Government Information Model; while providing complete training and conversion.



Vertex3, and Ontario based GIS services firm, will extend success with Esri's ArcGIS Platform for state and location organization in Canada.



Innovating The Power of Where

As a Geospatial IoT (GeoloT™) Integrator, we're combining the infinite capabilities of the Internet of Things (IoT) with best-in-class pairing with our unmatched Geographic Information Systems (GIS) expertise to provide GeoloT solutions. For more than 25 years, GISinc has been the worldwide leader maximizing spatial relationships as they relate to right-sized enterprise and mission-critical geospatial solutions on a macro level. Our vision for GeoloT is to become the cornerstone for Smart Community initiatives. The GeoloT Platform is helping organizations visualize their data by location, while becoming more insightful, more efficient, more competitive, and more productive.



Asset Tracking

- Hardware
- Personnel
- Predictive Maintenance
- Service Equipment



Occupant Management

- Comfort (AC)
- Connectivity (Wi-Fi)
- Productivity ("Dynamic Lighting"/circadian rhythms)



Energy Savings

- 40% Energy Reduction
- Unified Building Management Systems (BMS)
- Zero Light Maintenance



Space Mgmt. & Utilization

- Building Utilization
- Hoteling
- Interior Space Planning
- Parking



Situational Awareness

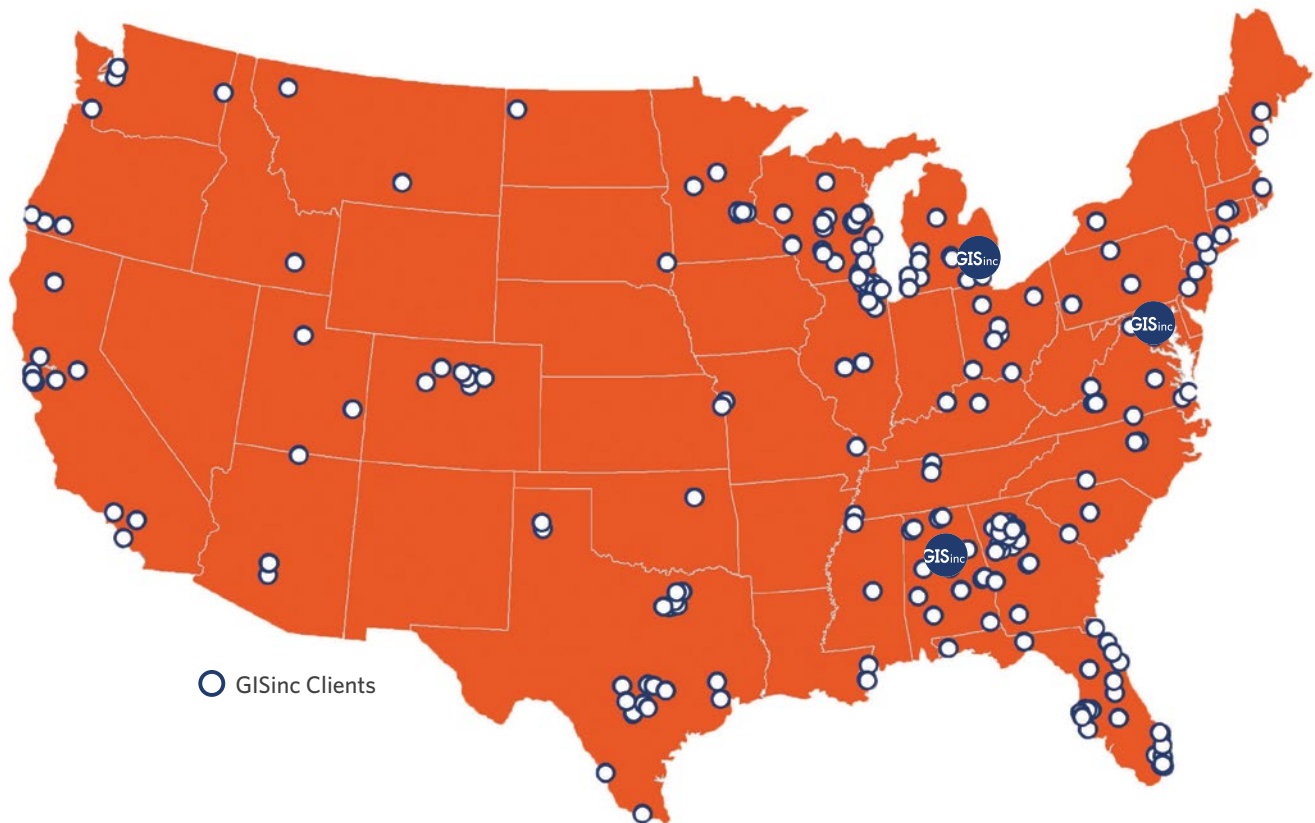
- Dwell Times/Traffic Patterns
- Firearm Tracking
- Shot Detection



Analytics & Data Sciences

- Insights

Customers Nationwide, Staff in 35 states and 3 Office Locations... GISinc is Ready to Serve



Alabama (Headquarters)
2100 Riverchase Center, Suite 105
Birmingham, AL 35244

Virginia
1600 Duke Street, Suite 300
Alexandria, VA 22314

Michigan
24800 Denso Drive, Suite 340
Southfield, MI 48033



*Inspired by
Location*

(205) 941-0442 ▪ sales@gisinc.com ▪ gisinc.com



DUNS: 826706848 | CAGE: 1FQD9

