

ELSAG MOBILE PLATE HUNTER® ALPR SYSTEM



THE 7TH GENERATION ELSAG™ MOBILE ALPR OFFERS FLEXIBILITY IN DEPLOYMENTS

ELSAG Mobile Plate Hunter® Automatic License Plate Readers (ALPR) are the most advanced available. Law enforcement routinely uses them to aid public safety missions like recovering stolen vehicles and plates, identifying unlicensed drivers, collecting delinquent taxes/fines, assisting homeland security, supporting investigations, and more.

Leonardo's newest model is more flexible than ever, featuring smaller, weather-safe components. The processor box and cables can now be mounted in exposed places such as a truck bed.

The 7th generation of the ELSAG Mobile Plate Hunter ALPR system reads and processes license plates 24/7 in any weather. Its performance and deployment flexibility help you enforce laws and solve cases faster.

- › Processor box about 50% smaller than its predecessor and IP67 rated (exterior grade)
- › Camera cable and cable connectors about 35% smaller
- › IP67 rated power cable available for connection to externally mounted Processor.
- › Latest CMOS sensor technology
- › High resolution cameras at 1280 x 1024
- › Expansive field of view
- › Integrated power conditioning with a configurable delay timer
- › Low power consumption at 15w for 2 cameras
- › ROHS compliant (Restriction of Hazardous Substances)

The ELSAG Plate Hunter® ALPR in Action

Digital ELSAG ALPR cameras are attached to the body of a patrol car or to infrastructure like a utility pole or sign gantry.

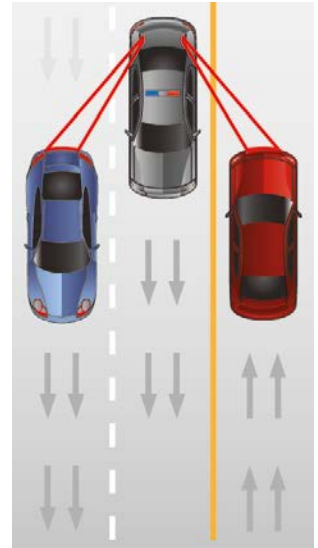
1. Patrolling officers and fixed cameras scan plates of passing vehicles, capturing license plate numbers, date/time stamps and GPS locations.
2. An infrared camera captures images of each plate and a color camera captures overview images of each vehicle.
3. A computer reads the plate characters and compares them with a hot list.



000-01T8

Database
Y01-N010
000-01T8
P93-F6L4
400-591T

4. Officers are instantaneously alerted of a match.



Cameras can also scan in parking lots without a dedicated side camera.




ELSAG PLATE HUNTER® ALPR PERFORMANCE

- › Cameras read license plates, day or night, in any weather
- › Mobile systems process plates on parked and moving vehicles
- › Plates are processed at up to 150 mph (241 kph) closing and passing speeds
- › Plates are recognized using specially designed protocols for each jurisdiction in which the systems are deployed
- › Alerts are sent to officers, command centers and other patrol cars instantaneously, upon identifying a suspect vehicle
- › Captured data includes date/time stamps, GPS coordinates and photo of the license plate
- › Fixed systems can capture the speed of passing vehicles
- › Mobile systems transfer easily from vehicle to vehicle
- › Hot list updates are wirelessly received and transmitted

This publication is issued to provide outline information only and is supplied without liability for errors or omissions. No part of it may be reproduced or used unless authorized in writing. We reserve the right to modify or revise all or part of this document without notice. 2020 © Copyright Selex ES Inc., a Leonardo Company

For more information please email:
ELSAGinfo@leonardocompany-us.com

4221 Tudor Lane
Greensboro, NC 27410
Tel: 1 (877) 773.5724
Outside the US: +1 (336) 379.7135

Made in the USA 

LEONARDO\US\012820