

# ELSAG™ COVERT RADAR TRAILERS & VARIABLE MESSAGE BOARDS

## LEONARDO TURNS RADAR TRAILERS AND VARIABLE MESSAGE BOARDS INTO ELSAG PLATE HUNTER® ALPR SYSTEMS

Get the benefits of speed monitoring or variable messaging and Automatic License Plate Recognition (ALPR) in one mobile solution. Leonardo transforms a standard radar trailer or variable message board into powerful covert tools that identify license plates connected to auto theft, child predators, warrants, speeding, uninsured vehicles, revoked driving privileges, parolees, etc.

As cars pass by an ELSAG Plate Hunter® Covert Radar Trailer or Variable Message Board, ALPR cameras read each license plate, then instantaneously compares it to law enforcement plate number hot lists.

If the ELSAG™ ALPR system reads a license plate included on a hot list, audible and visual alarms are broadcast instantaneously to a command center and to nearby officers for real-time interdiction. Information associated with each alarm—license plate number, photo of the car, date/time stamps and GPS coordinates of the read location—can be stored on the ELSAG Enterprise Operations Center™ data management server for future query and analysis at any time to aid investigations. Leonardo's ELSAG Plate Hunter® Covert Radar Trailers and Variable Message Boards can help your agency work more efficiently by fully focusing on identifying suspect vehicles and gathering criminal intelligence, 24/7.

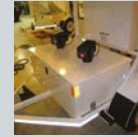
# Variations Of ELSAG Plate Hunter® Radar Trailers & Variable Message Boards To Fit Your Specific Law Enforcement Needs

## SPEED PATROL 18 140301B, 140302B

Comprised of a radar trailer with a two-digit 18" LED display, approach only K-Band radar, three 100AH batteries with a 30A battery charger, 50-watt solar package, ELSAG ALPR camera with an onboard brick PC, network switch, power conditioner and cellular modem mounting position (modem optional). One or two-camera systems available.

### COMPONENTS

411256	Trailer
421752	LPR Kit
421924	F3 35mm 12VDC Camera
210003	Labor
413297	Power Cable
413223	Ethernet Cable



## SPEED PATROL 18 W/POCKET 140301P

Comprised of a radar trailer with a two-digit 18" LED display, approach only K-Band radar, three 100AH batteries with a 30A battery charger, 50-watt solar package, one or two ELSAG ALPR cameras built into a semi covert pocket with an onboard brick PC, network switch, power conditioner and cellular modem mounting position (modem optional).

### COMPONENTS

411256	Trailer
421752	LPR Kit
140031	M7 1 Camera system
210003	Labor



## SPEED PATROL 18 W/POWER UPGRADE KIT 140301U, 140302U

Comprised of a radar trailer with a two-digit 18" LED display, approach only K-Band radar, four 200AH batteries with a 40A four-bank battery charger, 200-watt solar package, ELSAG ALPR camera with an onboard brick PC, network switch, power conditioner and cellular modem mounting position (modem optional). One or two-camera systems available.

### COMPONENTS

411256	Trailer
421752	LPR Kit
421924	F3 35mm 12VDC Camera
421753	Power Upgrade
413297	Power Cable
413223	Ethernet Cable



## MESSAGE BOARD 3 LINE FULL SIZE 1 CAMERA 140335

Full 23" 76" x 126" Case 27 x 48 Pixel, 480-watt solar array, MB2 - eight batteries, battery charger 45amp 115VAC 50/60 Hz, 2" ball coupler, one ELSAG ALPR camera, one ELSAG ALPR kit with onboard brick PC, network switch, power conditioner, cellular modem mounting position (optional cellular modem).

### COMPONENTS

413010	Trailer
421880	FCU Low Power
421924	F3 35mm 12VDC Camera
413223	Ethernet Cable
210003	Labor
413297	12VDC Power Cable



## SOLAR TOWER SPPT-3000

Solar Tech 30' Tower: 320-watt solar array, eight standard batteries, battery charger 45amp 115VAC 50/60 Hz, 2" ball coupler, one ELSAG ALPR camera, one ELSAG ALPR kit with onboard brick PC, extended camera cable for tower, network switch, power conditioner, cellular modem mounting position (modem optional).

### COMPONENTS

413091	Trailer
421924	F3 35mm 12VDC Camera
421880	Field Control Unit Low Power
421879	Remote Pan Tilt System
413223	Ethernet Cable
413297	Power Cable

## DIESEL HYBRID TOWER

Wanco 30' Telescoping Tower: 30-gallon tank provides up to 72 hours between refueling, 6Kw, 50A @ 120 VAC, up to four ELSAG ALPR cameras with full FCU, extended camera cable, (modem optional).

### COMPONENTS

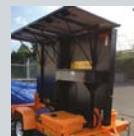
413092	Trailer
421880	FCU
421924	F3 35mm 12VDC Camera
413223	Ethernet Cable
421879	Remote Pan Tilt System
413297	Power Cable 12VDC

## MESSAGE BOARD 3 LINE FULL SIZE COVERT 140332

ST Message Board: Full 23" 76" x 126" Case 27 x 48 Pixel, 480-watt solar array, MB2 - eight batteries, battery charger 45amp 115VAC 50/60 Hz, 2" ball coupler, two covert ELSAG ALPR cameras, one ELSAG ALPR kit with onboard brick PC, network switch, power conditioner, cellular modem mounting position (modem optional).

### COMPONENTS

413010	Trailer
110183	Covert LPR
412725	Covert Box



## MESSAGE BOARD 3 LINE FULL SIZE 2 CAMERA 140336

ST Message Board: Full 23" 76" x 126" Case 27 x 48 Pixel, 480-watt solar array, MB2 - eight batteries, battery charger 45amp 115VAC 50/60 Hz, 2" ball coupler, two AD3FH cameras with brackets, one full FCU with mounting brackets, 15' camera cables, cellular modem mounting position (modem optional).

### COMPONENTS

413010	Trailer
421924	F3 35mm 12VDC Camera
413223	Ethernet Cable
421880	FCU Low Power
413297	Power Cable 12VDC

This publication is issued to provide outline information only and is supplied without liability for errors or omissions. No part of it may be reproduced or used unless authorized in writing. We reserve the right to modify or revise all or part of this document without notice. 2020 © Copyright Selex ES Inc., a Leonardo Company

For more information please email:  
ELSAGinfo@leonardocompany-us.com

4221 Tudor Lane  
Greensboro, NC 27410  
Tel: 1 (877) 773.5724  
Outside the US: +1 (336) 379.7135

Made in the USA

LEONARDO\US\012820

leonardocompany-us.com

