

Loader Attachment Parts –Forged spring steel tines



BALE TINE CONUS 3	
CODE	DESCRIPTION - THESE ARE MEASURED FROM THE POINT TO THE END OF NUT
77045	1140mm long forged steel tine
BALE TINE CONUS 2	
77018	1240mm long forged steel tine
77035	1100mm long forged steel tine
77017	980mm long forged steel tine
77016	800mm long forged steel tine
77030	Bale Tine nuts
SILAGE TINE CONUS 1	
77014	830mm cranked forged steel tine, (shear grabs)
71003	1250mm long forged steel tine
77005	1100mm spoon end forged steel tine
77002	1100mm forged steel tine
77777	1000mm forged steel tine
77001	810mm forged steel tine,(silage forks and grabs)
77011	810mm curved forged steel tine
77013	680mm curved forged steel tine, (1.8m grabs +)
77010	680mm curved forged steel tine, (1.2m + 1.5m grabs)
77027	Silage Tine nuts
77029	Cranked Tine nuts
HTCT	400mm long centre tine 32mm
77000	600mm long forged steel tine

Loader Attachment Parts

CODE	DESCRIPTION
700055	Handle for front end loader quick hitch (90deg handle)
700057	Handle for front end loader quick hitch (20deg handle)
700056	20mm pin for front end loader quick hitch
10BAR	35mm Bar for 1000kg pallet fork blade
15BAR	1 ½ Bar for 1500kg pallet fork blade
APF1	1000kg adjustable pallet fork blade/ each
APF25	2500kg adjustable pallet fork blade/ each (only sold in pairs)
APF5	1500kg adjustable pallet fork blade/ each
PFNC16	1800kg Class 2 Forks
DHF	Drawbar Hitch Flap (one piece profile)
DHF	Drawbar Hitch Flap (two piece profile, old style)
DHH32	Drawbar Hitch Hook 32mm
DHH38	Drawbar Hitch Hook 38mm
S8861	Drawbar Linkage Pin 28mm
DHS	Drawbar Hitch Spring
WBC-EQB	Bale clamp equaliser bar
FPF1	1000kg fixed pallet fork blade / each
FPF5	1500kg fixed pallet fork blade / each
GMS	GMS taper pins per set
P25	25mm pins for use in implements hitch mounting
P35-125	35mm pins for use in implements hitch mounting
P50HT	Pipe sleeves for bale tines (wrapped bales)(Per pair)

Loader Attachment Parts

CODE	DESCRIPTION
PROF14	Push off buck rake, nylon rollers / each
SGHT05	Profile fabricated silage grab tine (weld-on 90mm RHS)
SGHT03	Profile fabricated silage grab tine (weld-on 75mm RHS)
QVV-M08	Screw type QRC / each
27834	Bale clamp ram complete
26805	Single ram Silage grab ram complete
25539	Twin ram Silage grab ram complete
SGRSH	Silage grab ram shaft
SGRSK	Silage grab ram seal kit
BC07	Serrated teeth for shear grabs (180mm)
YSN2.4	2.4m Yard Scraper Nylon kit (includes bolts)
YSN3	3m Yard Scraper Nylon kit (includes bolts)
LWLSR150	Yard Scraper wheel
YSR	Yard Scraper Kit

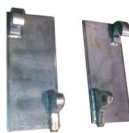
Tine Cones

CODE	DESCRIPTION
1841	115mm long conus 2 bale cone
19835	115mm long curved tine cone
14902	115mm long conus 1 silage cone
1842	165mm long conus 3 bale cone

Quick Hitch Brackets



0012



0013



0019

CODE	DESCRIPTION
007	Allied Large
008	Allied Small
009	Daedong AL90 old style
0010	Daedong AL40
0011	Cat Telehandler (CAT IT)
0012	Euro hitch100mm wide back plates
0012-A	Euro hitch100mm wide back plates with spacer bars
0013	Euro hitch200mm wide back plates
0014	Euro hitch high mount
0015	GMS TR6 andTR8
0016	John Deere 200cx.300cx, 400cx series
0017	John Deere 540 series
0018	John Deere 640 and 740 series
0019	Mailleux(MX)
0020	Pearson 20 series Standard size (55mm deep)
0020/1	Pearson 20 series Large size (125mm deep)
0021 single	Pearson pin type single crowd 25mm and 35mm
0021 twin	Pearson pin type twin crowd 25mm and 35mm

Quick Hitch Brackets



0028



0030

CODE	DESCRIPTION
0022	Trimar (old type –not Euro)
0023	Merlo welded to plate
0024	Merlo hooks &latch
0025	Manitou
0026	Matbro
0027	JCB 520
0028	JCB526 (compact)
0029	JCB 530 & 540
0030	JCB 530 & 540 large bracket
0031	JCB 414 & 434
0032	Sanderson
0033	DIECI
0034	DIECE 7Ton
0035	Sigma (Early style –not Euro)
0036	Bob Cat type quick hitch brackets
0037	Buhler (similar to euro hitch)
0038	John Deere H480
0039	Genie
0040	Avant
0046	Kubota LA243