

BROCHURE

Sage Inventory Advisor

*Optimize your supply chain
and stock management*



Meeting the challenge of inventory management

sage Inventory Advisor

For many businesses over the world, inventory is often a business' largest asset. And with such a large capital investment at stake, even the smallest changes you make to your stock can have significant cost implications - not to mention the cumulative effect across your entire organization.

Indeed, businesses everywhere are feeling the pinch of underperforming inventories:

- 42% say that stock-outs are a primary concern
- 37% find excess inventory to be a key issue
- 21% say they spend too much time calculating reorder quantities

With fierce competition and increasingly squeezed profit margins, any effort you can make to reduce overstocking, whilst also meeting demand, will likely create significant savings.

But the fact is disparate data and lack of insight can cause significant supply chain issues.

What's more, many businesses struggle with warehouse optimization, leading to overstocking that eats working capital and sinks profitability and understocking that results in lost sales and disappointed customers.

Sage Inventory Advisor can help you solve this challenge and extend the capabilities of your ERP.

It delivers forecasts, item classifications and other optimization tools to help you make data-driven decisions about what to order, when to order, and how much to order.

The result? An optimized inventory that makes your business leaner and more competitive.

Overcome underperforming inventories with Sage Inventory Advisor

Sage Inventory Advisor is a cloud-native application that's designed to help transform your inventory management capabilities by using your existing data to reduce stock-outs, excess inventory, forecasting time, and costs, while also improving buyer productivity.

Sage Inventory Advisor can be used together with Sage 100cloud, Sage 300cloud, Sage 500, and Sage X3 to analyze inventory data, improve inventory forecast accuracy, and suggest optimal replenishment routines.

Sage Inventory Advisor is easy-to-use and accessible anytime and anywhere. It also comes with in-app support, and embedded training videos, so you can be sure you're covered 24/7/365.

Product code, Description, Class, Velocity	UOM, EAD	Rec., Amended	Cost, Amended	Value	Policy	Dem
BQ1242FGN07 Auto Alloy 20" 18-spoke 326 73" Track	units	105	1,119,033	117,499	ROP	Aug 12 sales: 5.2 PTD sales: 10 Apr
BQ1248FG11907 Auto Alloy 20" 5-spoke 71.5" Track Maxus	units	27	1,132,563	30,579	ROP	Aug 12 sales: 4.4 PTD sales: 3 Apr
BQ1246FGN01 Auto Alloy 20" 6-spoke Grease Complete	units	130	1,135,126	147,566	ROP	Aug 12 sales: 20.1 PTD sales: 13 Apr

Line count	Recommended	Av
3		
Order units	362	
Order value	295,644	21

Sage Inventory Advisor helps resolve warehousing challenges

Sage Inventory Advisor gives you a daily diagnostic of the inventory that makes a difference to your bottom line, reduces the time you spend on forecasts and gives you the optimal investment required to achieve target fill rates.

The application is based on 30 years of inventory automation experience, giving you the power to collect, collate and process your inventory data in real-time and gain deep competitive insight.

By using Sage Inventory Advisor, our customers have seen:

- A reduction in excess inventory by 10-15%
- An improvement in fill rate by up to 10% and an elimination of stock-outs
- A slash in excess and waste by 10-15%
- 15-20% returns of their capital invested in stock
- A reduction in forecasting time by 50%



Discover how TRI Industries optimizes its inventory management

**Industry:**

Printer cartridge manufacturer

Location:

Illinois, USA

System:

Sage Inventory Advisor and Sage 100cloud

Challenge

Insufficient inventory planning from outdated supply chain processes and procedures that led to long lead times and inability to access trending data.

Solution

A simple and affordable application to enhance the company's Sage 100cloud instance. It has helped TRI Industries to work smarter by making better decisions and has created significant cost savings to boot.

Results

Before the implementation, TRI Industries wanted to boost its fill rate to 96%. In the end, it increased to 97.8%. What's more, the company's inventory costs reduced by 33% and it has gained 15 hours in efficiency savings every week by refining its ordering process.

Why Sage Inventory Advisor?

Sage Inventory Advisor extends the capabilities of Sage 100cloud, Sage 300cloud, Sage 500 and Sage X3, giving you a comprehensive suite of features to help you optimize every aspect of your stock management.

Intuitive interface for clear information visualization

Use web-based and mobile interfaces that display contextual information clearly and simply, so you have all the insight you need at your fingertips.

Customizable dashboards to report on your company's specific KPIs

Gain visibility of critical KPIs and financials such as stock holding, stock-outs, potential stock-outs, excess stock and surplus orders. Also gain insight into top items requiring immediate attention with the option to drill down deeper into your data.

Flexible inventory management to optimize stock rotation

Get early stock level warnings before they become a problem, and suggestions for optimal replenishment routines and automatic minimum and maximum level calculations.

Optimized ordering with real-time re-order suggestions

See what orders to place based on your parameters, including stock levels and forecasts, and sort purchase orders by personal preference. Sage Inventory Advisor provides you with a view of recommended daily orders by supplier. You can also amend orders and send them back to your Sage ERP solution for processing.

Inventory forecasting to pre-empt shortages and overstocking

See the future with a dynamic, graphical forecast engine that lists the top under and over forecasted items for further analysis and action, helping you forecast and plan future replenishment orders.

Interactive reports aligned to organizational capabilities

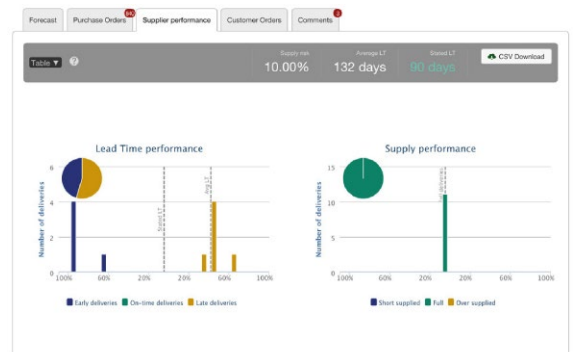
Obtain critical and detailed information to help optimize your inventory and make sense of your data to gain maximum insight.

Supplier comparisons to aid purchase planning

Analyze supplier performance through relevant charts and plan your purchases accordingly, whilst also being able to set dynamic safety stock based on supply risk.

Item data all in a single integrated solution

Gain a single view of all item information, in one place.



Sage (US) Limited
271 17th Street Northwest
Atlanta, Georgia
30363
United States

www.sage.com/US/marketplace

©2020 The Sage Group plc or its licensors. Sage, Sage logos, Sage product and service names mentioned herein are the trademarks of The Sage Group plc or its licensors. All other trademarks are the property of their respective owners. NA/WF 183498.

**Contact Vrakas/Blum Computer
Consulting for more information:**

262.797.0400
info@v-bcc.com
v-bcc.com

The logo for Vrakas/Blum Computer Consulting features the company name in a sans-serif font. 'vrakas' is in black, 'blum' is in a lighter grey, and 'computer consulting' is in blue. A blue checkmark symbol is positioned to the left of the word 'computer'.

vrakas/blum
computer consulting