



---

## Highlights

- Enables users to populate IBM Cognos TM1 and IBM Planning Analytics applications and BI warehouses by moving data and metadata from Cognos TM1, Oracle Hyperion, SAP Business Warehouse (BW) or other applications.
  - Performs automated high-speed data extraction.
  - Offers an intuitive interface designed for business users.
  - Supports continuous planning and reporting cycles.
- 

# IBM Cognos Integration Server

*Make data extractions easier to build and maintain*

## Organizations need higher performance with greater ease of use

Integrating financial data from disparate sources can be a critical factor in a company's ability to successfully manage its business. Yet many organizations find that extracting data from almost any source can be a slow and cumbersome process. They need to be able to extract data quickly, in a repeatable process that eliminates the need to start over again in the next planning or reporting cycle. IBM® Cognos® Integration Server satisfies this need with a high-performance, easy-to-use alternative to manual data extraction processes.

## IBM Cognos Integration Server

As proprietary applications for business intelligence (BI) and performance management (PM) have transitioned from being data end-points to key sources of information, the need to extract that information from these varied systems for loading into centralized repositories has grown to be a business imperative.

The various sources can become “data islands,” with users forced to constantly compare spreadsheets to confirm that the information is correct. Custom interfaces are too unstable to reliably extract data and metadata for reporting purposes. IT requires the rigidity of a relational system while finance users need their cubes. To address these diverse requirements, a high-performance solution, which also offers ease of use, is needed to share financial data and extend rather than replace existing software investments.



Cognos Integration Server offers a faster and more reliable method of sourcing specialized “cube” data across financial, sales and operational applications from a variety of data sources, including Cognos TM1®, Oracle Hyperion applications and SAP Business Warehouse (BW). Cognos Integration Server extracts application content including data and metadata (and security profiles in the case of Hyperion applications) and moves this content into Cognos TM1, IBM Planning Analytics or open data warehouses for use with business intelligence or performance management applications. Cognos Integration Server reduces the need for custom integrations that typically introduce compliance risks and place a burden on scarce technical resources.

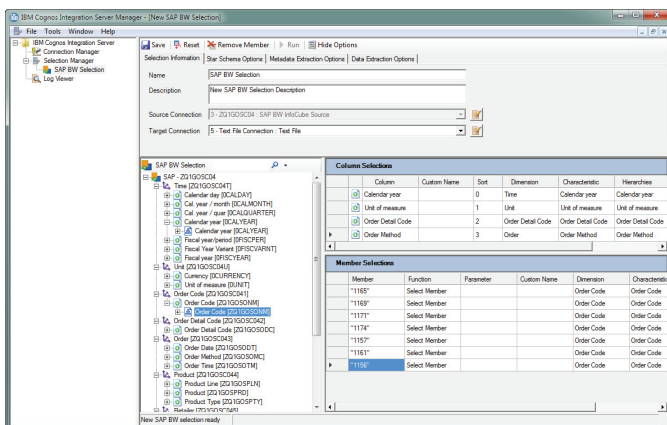


Figure 1: The Cognos Integration Server user interface makes it easier to select subsets of data for extraction.

**Key benefits**  
**Integrates and automates**

Cognos Integration Server enables users to easily move their existing data and content from source applications such as Cognos TM1, Oracle Hyperion cubes, and SAP BW for use in Cognos TM1 cubes and IBM Planning Analytics. Cognos Integration Server streamlines the process of dynamically generating target schemas for data warehousing and supports single-source reporting strategies where needed. By using the Cognos Integration Server Command Line Interface, users can easily schedule extractions to run by using a job scheduling system such as IBM Cognos Command Center.

**Provides high-performance data extraction**

Users can choose full or partial data extractions; select entire dimensions or virtually any member intersection to create custom data subsets for export. Data extraction can be reduced from days or hours to only minutes, using the Intelligent Extraction feature, and a continuous planning cycle with rapid data updates can be effectively implemented.

**Bridges the needs of IT and finance**

With an interface designed for business users, Cognos Integration Server provides a common ground for meeting the diverse needs of IT and Finance. IT can enjoy access to data in an open and standard format while finance users can continue to leverage the cube technology that suits their business requirements.

**Balances hierarchies for planning and reporting**

With its patented ability to balance “ragged” hierarchies, Cognos Integration Server can ensure that important hierarchies and drill paths that reflect the business are preserved in the target relational reporting application.

**Provides 24/7 availability**

While remaining online for users, Cognos Integration Server can perform extractions on a continuous basis to update external reporting applications and for backup purposes.

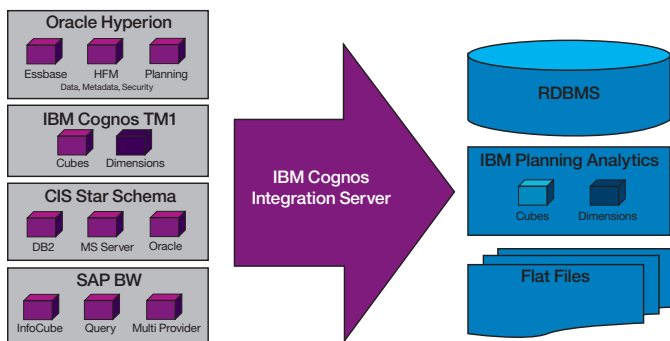


Figure 2: The patented technology of Cognos Integration Server rapidly extracts large volumes of content for loading into Cognos TM1 and other applications, where the data can be made available for query and reporting.

### Supports single-source reporting strategies

For organizations with a single-source reporting strategy, Cognos Integration Server extracts and unifies value-added information locked in proprietary applications like Oracle Essbase, Oracle Hyperion Planning, Oracle Hyperion Financial Management and now SAP BW. These “data generating” applications are often gateways for user input. They can model complex business functions, generating valuable content for use downstream in a central reporting system.

### Delivers high ROI

By unifying information across an organization’s portfolio of financial analysis applications, Cognos Integration Server can lower total lifecycle costs and leverage your existing BI investments. In conjunction with Cognos Command Center, data extractions can be automated and chained together with other application processes to provide an overview of who ran what, when, where and how — as well as reducing ongoing maintenance. In addition, the solution can be up and running in as little as a single day.

### Key features

- Data extractions are easy to build and maintain over time for loading into Cognos TM1, IBM Planning Analytics, IBM DB2® and major relational database management systems (RDBMS).
- Interface designed for business users.
- Faster and more reliable performance data extraction for loading into Cognos TM1 applications or BI warehouses.
  - Extracts data and metadata (dimensions) from Cognos TM1 and IBM Planning Analytics, as well as from SAP BW InfoCubes, InfoQueries and multi-provider InfoCubes (using BAPI or MDX).
  - Extracts Oracle Essbase block data storage option (BSO) or aggregate data storage option (ASO) data, metadata and security profiles.
  - Extracts Oracle Hyperion Planning data, metadata, line-item details and security profiles.
  - Extracts Oracle Hyperion Financial Management data, metadata, line-item details and journal entries.
  - Loads content directly into Cognos TM1, IBM Planning Analytics, IBM DB2, Microsoft SQL Server or standard star-schema formats.
- Balances ragged multidimensional hierarchies for use with products like IBM Cognos Framework Manager.
- Preserves important hierarchies and drill paths that reflect the business in the target relational reporting application.
- Supports large Essbase dimensional data extraction, exceeding the 2<sup>64</sup> power potential combination barrier.
- In combination with Cognos Command Center, extractions can be automated and chained together with Cognos TM1 TurboIntegrator and other application processes.

### System requirements

#### Server operating system\*

- Microsoft Windows Server 2012
- Microsoft Windows 7 (x86, x86-64)
- HP-UX 11.x Itanium/PA RISC

#### Client operating system

- Windows Server 2008, 2008 R2, 2012, 2012 R2 and Windows 7
- IBM Cognos Command Center web client supports any major modern browser, including Microsoft Internet Explorer, Firefox and Chrome



## Source databases

- Oracle Essbase 9.3.1 or higher
- Oracle Hyperion Financial Management 9.3 or higher
- Oracle Hyperion Planning 9.3.1 or higher

## Target databases

- Oracle 10g and higher, with Oracle Client Interface (OCI)
- Microsoft SQL Server 2005 or higher, with Microsoft Data Access Components 2.8 or higher
- IBM DB2 8.2 or higher

## Repository

- Oracle 9i - 9.2.0.1 or higher
- Microsoft SQL Server 2005 or higher, Microsoft Data Access Components 2.8 or higher
- SQLite (Built-in)

*\* IBM Cognos Integration Server requires Microsoft .NET Framework 2.0 or higher. Customers must acquire a license for Microsoft .NET Framework separately.*

## About IBM Analytics

IBM Analytics software delivers data-driven insights that help organizations work smarter and outperform their peers. This comprehensive portfolio includes solutions for business intelligence, predictive analytics and decision management, performance management, and risk management.

IBM Analytics solutions enable companies to identify and visualize trends and patterns in areas, such as customer analytics, that can have a profound effect on business performance. They can compare scenarios, anticipate potential threats and opportunities, better plan, budget and forecast resources, balance risks against expected returns and work to meet regulatory requirements. By making analytics widely available, organizations can align tactical and strategic decision-making to achieve business goals. For further information please visit [ibm.com/analytics](http://ibm.com/analytics)

## Request a call

To request a call or to ask a question, go to [ibm.com/analytics/contactus](http://ibm.com/analytics/contactus). An IBM representative will respond to your inquiry within two business days.

---

© Copyright IBM Corporation 2016

IBM Corporation  
IBM Analytics  
Route 100  
Somers, NY 10589

Produced in the United States of America  
July 2016

IBM, the IBM logo, Cognos, TM1, and [ibm.com](http://ibm.com) are trademarks of International Business Machines Corp., registered in many jurisdictions worldwide. Other product and service names might be trademarks of IBM or other companies. A current list of IBM trademarks is available on the Web at "Copyright and trademark information" at [www.ibm.com/legal/copytrade.shtml](http://www.ibm.com/legal/copytrade.shtml).

Microsoft and Microsoft Excel are trademarks of Microsoft Corporation in the United States, other countries, or both.

This document is current as of the initial date of publication and may be changed by IBM at any time. Not all offerings are available in every country in which IBM operates.

THE INFORMATION IN THIS DOCUMENT IS PROVIDED "AS IS" WITHOUT ANY WARRANTY, EXPRESS OR IMPLIED, INCLUDING WITHOUT ANY WARRANTIES OF MERCHANTABILITY, FITNESS FOR A PARTICULAR PURPOSE AND ANY WARRANTY OR CONDITION OF NON-INFRINGEMENT. IBM products are warranted according to the terms and conditions of the agreements under which they are provided.



Please Recycle

---