

# A2LOCK HITCH INSTALLATION AND OPERATIONAL MANUAL



Any piece of machinery can be dangerous when it is not operated correctly

# CONTENTS

INTRODUCTION	01
OWNER INFORMATION	02
GENERAL INFORMATION	03
ATTACHMENT DELIVERY INSPECTION	04
OVERVIEW OF THE COUPLER	05
SAFETY INSTRUCTIONS	06
INSTALLATION INSTRUCTIONS	10
FITTING THE COUPLER	11
HYDRAULIC HOSE INSTRUCTION	14
MAINTENANCE GUIDELINES	18
OPERATING INSTRUCTIONS	19
ADDITION - TILT COUPLER MOTOR	22
REGISTRATION	25

## ATTACH2 EQUIPMENT

PO Box 905  
Masterton, 5840  
New Zealand  
T: +64 6 929 7592  
F: +64 6 370 3024  
E: sales@attach2.co.nz  
W: www.attach2.co.nz  
FREEPHONE 0800 100 683

# INTRODUCTION

A2LOCK is a specialist manufacturer of standard excavator attachments. Through streamlined manufacturing processes, our industry's shortest lead times and unrivalled after-sales support, our aim is to be the No.1 supplier of the tools that are vital to keeping your excavators working.

Operating from our state-of-the-art, purpose-built factory located in the heart of the lower North, here real men meet the ground, we can offer service found by no other. Our factory and storage complex has been set up so that we can get our product out the door faster and onto the job site where they prove their worth. However, our factory is not our most valuable advantage, our Advantage lies in the people who work here at A2LOCK, those who drive the company forward always ensuring we are performing on the cutting edge.

## OUR VALUES

Our values are important to us. Integrity and honesty is to be foundational.

## TEAMWORK

HG Group works as a team, treating everyone with respect and fairness, providing a clean and positive work environment, with development for all members.

## CONTINUOUS IMPROVEMENT

Improvement is Critical. Our core responsibility is to find a better way to do things to improve the business.

## ENVIRONMENT

We are committed to contributing to a clean and tidy work environment we would be proud to show our children.

## PASSION FOR OUR CUSTOMERS

Measuring our success by that of our customers – always driven by quality of service.

# OWNER INFORMATION

Thank you for your decision to purchase a Quick Hitch from A2LOCK Equipment. To ensure maximum performance of your attachment, it is mandatory that you thoroughly study the operation and maintenance manual and follow its recommendations. Proper operation and maintenance are essential to prevent injury or damage and to maximize attachment life.

Operate and maintain this attachment in a safe manner and in accordance with all applicable local, state, and federal codes, regulations and / or laws, and in compliance with on-product labelling and these instructions.

Make sure that all personnel have read this operation and maintenance manual and thoroughly understand safe and correct operating, installation and maintenance procedures.

Continuous improvement and advancement of A2LOCK Equipment's products may result in changes to your attachment that may not be reflected in this publication. A2LOCK Equipment reserves the right to make product improvements to the attachment at any time. Although great care has been taken to ensure the accuracy of this publication, A2LOCK does not assume any liability for errors or omissions.

# GENERAL INFORMATION

This Operation & Maintenance Manual was written to give the owner / operator instructions on the safe operation and maintenance of the A2LOCK attachment. **READ AND UNDERSTAND THIS OPERATION & MAINTENANCE MANUAL BEFORE OPERATING YOUR A2LOCK ATTACHMENT.** If you have any questions, see your A2LOCK dealer. This manual may illustrate options and accessories not installed on your A2LOCK attachment.

The information in this operation and maintenance manual contains instructions for the installation, operation, and maintenance for A2LOCK Quick Hitch.

Keep the operation and maintenance manual and the entire documentation packet in the storage compartment of the machine. The operation and maintenance manual must be available for all operators. A2lock Quick Hitches are installed at the outer end of the work equipment of various types of construction and earth-moving machines. A2LOCK Quick Hitches provide for faster and easier changing of buckets and other attachments.

A2LOCK Quick Hitches are used on hydraulic excavators, compact excavators and on backhoe loaders. Therefore this manual is a permanent part of your machine.

Warranty is provided as part of the A2LOCK Equipment's support program for customers who operate and maintain their devices described in this Manual. The warranty is explained in the warranty section.

## IDENTIFICATION LABEL

Your coupler will have an identification label on the hitch with the model of the Coupler, Coupler Weight, Serial number and Safe Working load.

<b>ATTACH2</b> EQUIPMENT		sales@attach2.co.nz   www.attach2.co.nz   +64 6 929 7592 Attach2   1 Norman Avenue, Masterton 5791, New Zealand
<b>PRODUCT CODE</b>	<input type="text"/>	
<b>MANUFACTURED</b>	<input type="text"/>	
<b>SERIAL NUMBER</b>	<input type="text"/>	
<b>SWL (kg)</b>	<input type="text"/>	
<b>WEIGHT (kg)</b>	<input type="text"/>	
<b>MAX/MIN PRESSURE</b>	<input type="text"/>	

# ATTACHMENT DELIVERY AND INSPECTION

All delivered products by A2LOCK should be checked for defects, damages or missing parts to assure performance upon arrival by an A2LOCK dealer. The A2LOCK dealer shall write and report any problem within 10 work days.

In case of transportation damage shall be claimed by the A2LOCK dealer directly to the shipment and handling company. Any case of the damages shall be recorded on the shipping documents and the claims have to be made immediately. A2LOCK is not responsible for shipping and handling damages.

A2LOCK will notify the A2LOCK dealer for any claim within 20 business days.

THE A2LOCK MULTI-HITCH IS A FULLY AUTOMATIC AND IS TRULY A DOUBLE LOCKING COUPLER. THIS COUPLER IS PATENTED UNDER PATENT [PCT/NZ2015/050125](https://patents.google.com/patent/PCT/NZ2015/050125).

## COMPLIANT WITH

- Australian Standard AS772-2008
- European Standard EN474
- Draft proposed ISO International Standard.

## VITAL POINT

Please keep this manual with the machine at all times once the coupler is installed on the machine. Operators should be in full understanding of use of this coupler before use.

[At any point if there is misunderstanding on any points, please contact us using details found on this page. Informative training information on the use of this product is also found online at \[www.A2LOCK.com\]\(http://www.A2LOCK.com\)](#)

# OVERVIEW OF THE COUPLER

This is a hydraulic quick coupler designed with the operator and site safety in mind, where attachment changes are completed safely without leaving the cab. Both front and rear attachment pins are independently and hydraulically released by the coupler.

We designed the coupler as we knew we needed a product that wasn't in the market for the smaller range of Excavators in terms of Safety. Once we knew we had this and developed in this size, we could apply the same principle through larger Couplers. The Difficulty in designing the coupler is building something that is practical and going to be safe for personal working underneath or by the excavator. Practical and Safety is the 2 aspects we focused on for this invention. Being small and what is needed to achieved in being practical was extremely difficult and we evolved and tested Concepts numerous times before we had the concept meeting the highest with our expectations of the 2 Criteria.

The Rear Locks are mechanical and are preventing the pin from exiting the rear, this isn't about preventing the jaw to move back, it is stopping the Pin from exiting the Rear Jaw. This is a critical part of the coupler, as if the Cylinder failed, the Attachment will be held in a safe position preventing a potential fatality. Both front and rear locks work independently of each other meaning it is safe working at all times.

The rear lock is automatically locked as the locks are driven over the rear pin. When the Coupler is turned upside down, you can visually see that the locks are engaged. In the working position, you can see the front locks are in place and engaged.

The Coupler can operate with a range of buckets and a wide range of attachments in its weight class and pin diameter size. While the 'Quick Coupler' is designed and proven to work with most available buckets and other attachments, A2LOCK do not approve the use of mechanical pulverisers, mechanical shears and such tools with this coupler. Reason being is the coupler jaw is put tremendous force from the leverage of these Attachments, something of which we have no control over.










# SAFETY INSTRUCTIONS

## SUMMARY

1. I have read and are fully familiar with this manual, before installing or operating the 'MULTI-LOCK Quick Coupler'
2. I will never work on the 'A2LOCK Multi-Coupler' without ensuring it is safe to do so.
3. I will take care when connecting or disconnecting hydraulic hoses.
4. I will only use Attachments that should be used with individual manufacture guidelines when used with the 'A2LOCK Multi-Coupler'.
5. I will carry out recommended checks on the 'A2LOCK Multi-Coupler' regularly and replace any parts that are damaged or approaching the end of their expected life cycle.
6. I know to never modify the 'A2LOCK Multi-Coupler' without first seeking approval from A2LOCK.
7. I will take responsibility of each individual to wear appropriate personal protective equipment when installing, operating or working on the 'MULTI-LOCK Quick Coupler'.
8. I will contact A2LOCK if I have any queries regarding the 'A2LOCK Multi-Coupler', which are not covered in this manual.
9. I will ensure that the personal who install the 'A2LOCK Multi-Coupler' is suitably qualified. They will be held liable should any accident were to occur as result of poor fitting.
10. I will check and ensure the decals required to operate the 'A2LOCK Multi-Coupler' remain current and seek replacements from A2LOCK if not usable.
11. I will ensure that both the excavator manufacture and A2LOCK guidelines are followed when lifting using the 'MULTI- LOCK Quick Coupler'.
12. Operating sequence of 'A2LOCK Multi-Coupler': Opening- Rear lock hydraulically opens- Latching hook retracts hydraulically- Front locking mechanism mechanically opens.
13. Please contact your plant/training department for operation instructions if an alternative control box to those supplied by A2LOCK has been fitted it your excavations machine.
14. Please be aware of the effect the addition of the 'A2LOCK Multi-Coupler' has on the working range/ danger zone of the excavator machine to which it is fitted.
15. Under no circumstances does A2LOCK authorise the transport of people when using the 'A2LOCK Multi-Coupler'.
16. Please ensure all Persons remain out- side the swing radius of the excavator machine with attached 'A2LOCK Multi-Coupler' while the machine is in operation.



**IMPORTANT NOTES FOR YOURS AND OTHERS SAFETY. PLEASE READ CAREFULLY.**

<p>1. As a new owner / operator of an 'A2LOCK Multi-Coupler' it is very important that you take time to familiarise yourself with the 'A2LOCK Multi-Coupler' and the requirements for its safe operation and maintenance. Therefore, we stress the importance of you studying the contents of this booklet very carefully and be fully familiar with its contents before operating. As you would be well aware, couplers are a fundamental part of the Excavator for the excavator to be working. These should be treated in this way. Damage through neglect could mean your machine will be out of operation meaning downtime, which is a cost. More importantly, it could be unsafe causing harm or even death!</p>	 
<p>2. Great care must be taken when working on or with the 'A2LOCK Multi-Coupler'. Never attempt to work on or carry out maintenance on this product without first ensuring that it has been made safe. This will mean that the machine to which it is attached is switched off and the key removed.</p>	
<p>3. As this is a hydraulically operated Coupler, even with the machine switched off, the hydraulic system could be pressurised so care must be taken when connecting / disconnecting any hydraulic hoses.</p>	
<p>4. Regardless of the bucket or attachment being used with the 'MULTI- LOCK Quick Coupler' they must be used in strict accordance with their individual manufacturer's guidelines and instructions.</p>	
<p>5. In order to get the most from your 'MULTI-LOCK Quick Coupler' we have set out in this booklet some recommended service and maintenance checks. Be sure to have these carried out on a regular basis. Anything damaged should be replaced immediately with genuine parts.</p>	
<p>6. Never attempt to modify either the 'A2LOCK Multi-Coupler' without first receiving approval from A2LOCK Attachments personnel. Unauthorised modification of the Quick Coupler could seriously impair the performance of the equipment and could cause serious injury to personnel.</p>	
<p>7. It is the responsibility of all person involved in the installation, maintenance and operation of the A2LOCK 'MULTI- LOCK QUICK Coupler' to ensure their own personal safety by wearing suitable protective clothing, safety footwear, Hi- visibility vests and ear &amp; eye protection where appropriate.</p>	
<p>8. If you should have any difficulty with your 'A2LOCK Multi-Coupler' which is not addressed in this manual, then you should contact A2LOCK Attachments immediately at the numbers provided on this manual.</p>	

9. Although every effort has been made to optimise the strength and durability of the 'A2LOCK Multi-Coupler', it should be noted that the typical environment in which the coupler is likely to be working can be extremely harsh and detrimental to all types of machinery. For this reason, A2LOCK Attachments highly recommends that as well as the regular maintenance checks, certain components be replaced as a matter of course after reaching a pre- specified no. of working hours. Intermittent problems can be symptoms of imminent failure and if these are experienced with key control components such as the control box or solenoid valve, these components should be replaced immediately. Details of specific components and their expected normal working life can be found in the Maintenance section of this manual. Please take the time to become acquainted with these components and to monitor their working age. Only genuine A2LOCK parts must be used to service this Quick Coupler. A2LOCK Attachments reserves the right to waive liability if non genuine parts are fitted to this Coupler.



10. It is important to note that if you or your representative is responsible for the initial installation of the A2LOCK Quick coupler, especially in regard to the hydraulic / electrical system; you must take the full responsibility to make sure the installation is carried out in strict accordance with Coupler requirements. Any failure to do so may allow the unsafe operation of the coupler and result in serious injury or death, with the installer being found to be liable.



11. The operating instructions to couple and uncouple the coupler contained in this manual are a guideline for use with the A2LOCK Control Box. Please contact your plant department or training department if another system has been implemented at installation.



12. Other than the structural integrity of the 'A2LOCK Multi-Coupler', the most important components of the coupler are the hydraulic cylinders and the front and rear pin locking mechanisms. It is imperative that to ensure the continued safe and effective use of this coupler, a daily check be carried out to monitor wear, blockages and other damage that can possibly occur to the detriment of the system's safe operation. While every effort has been made by A2LOCK Attachments to provide a safe, durable and effective product to work in a typically harsh environment, it must be stressed that it is the responsibility of the owner / user to keep the system serviced and in good working order. The machine operator and / or owner could be held to be negligent if they fail to keep the system in good order.



13. It is essential to ensure continued safe operation of the A2LOCK 'MULTI- LOCK QUICK Coupler', that along with regular maintenance checks and services carried out on the coupler; close attention be paid to the presence and condition of operational decals in the machine's cab. If one or more of these decals become damaged or lost, it is essential that they be replaced immediately. **PLEASE MAKE SURE THAT THE IN- CAB OPERATION INSTRUCTION DECALS ARE MOUNTED IN THE MACHINE CAB IN AN EASILY VISIBLE LOCATION CONVENIENT TO THE OPERATOR & THAT THIS MANUAL IS AVAILABLE IN THE MACHINE CAB.**



14. Lifting eye can only be used with the machine if there is a hose burst check valve on the boom. It is the responsibility of the fitter to disable the lifting eye, if the safety check valves are not incorporated. If the coupler is fitted with a lift eye, please inspect daily before use for wear, cracks and fatigue. If damaged do not use. The lifting eye on the 'A2LOCK Multi-Coupler' has been tested and stamped by A2LOCK, this test is valid for 12 months from first date of purchase, and there after it is the responsibility of the machine owner to insure the lift eye remains compliant to each countries national standard. Check the SWL (Safe Working Load) that is stamped on the coupler and ensure the lifting equipment is compatible. Always check the excavator manual for the machine SWL as this determines the lifting capacity of the machine. This SWL should never be exceeded under any circumstance and the mass of the coupler must also be considered when Lifting Eye working load of the 'MULTI- LOCK quick Coupler' must be referring to the machine SWL. The mass of the 'A2LOCK Multi-Coupler' can be found on the serial plate of the coupler.



15. The working range of the machine can change with the incorporation of an 'A2LOCK Multi-Coupler'. This includes the following:

- a. When using the 'A2LOCK Multi-Coupler' for object handling in conjunction with earth moving machine weighting tables both the mass of the coupler and any attachment must be considered. What also must be considered is the effect to the extension of the machine arm as result of the attachment of the 'A2LOCK Multi-Coupler'
- b. Break out force is reduced at the tip of the bucket due to the longer distance from the pivoting area.
- c. The danger zone of an excavator machine is any point within the machines maximum swing radius.

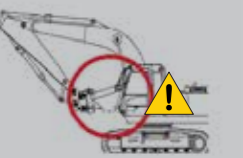
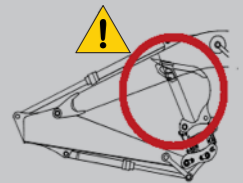


**WARNING: IT IS IMPERATIVE THAT ALL PERSON REMAIN OUTSIDE THE DANGER ZONE OF THE EXCAVATION MACHINE WHILE IT IS IN OPERATION. THIS INCLUDES ANY EXTENSION TO THE DANGER ZONE AS RESULT OF ADDITION OF THE 'A2LOCK MULTI-COUPLER'**

16. The 'A2LOCK Multi-Coupler' extends the length of the excavator machine dipper arm. As result of this extension some attachments are more liable to interfere/impact with the boom and possibly the cab. Please check this before machine operation. Failure to do so can lead to injury or death.

A2LOCK accept no liability or responsibility for any loss or damage which may result from a lack of consideration of the increased dipper arm length, when the 'A2LOCK Multi-Coupler' is fitted.

**WARNING: PLEASE NOTE THAT UNDER NO CIRCUMSTANCE, DOES A2LOCK ATTACHMENTS AUTHORIZE THE TRANSPORT OF PEOPLE WHEN USING AN 'A2LOCK MULTI-COUPLER', EVEN IF THE OEM MACHINE ONTO WHICH IT IS ATTACHED IS DESIGNED TO DO SO.**



# INSTALLATION INSTRUCTIONS

## INSTALLATION INSTRUCTION OVERVIEW

To guarantee satisfactory and safe operation of the equipment, it is strongly recommended that the 'MULTI-LOCK Quick Coupler' be installed and fitted by trained personnel only. Installation of the 'MULTI-LOCK Quick Coupler' must be in accordance with the instructions provided in this manual, any deviation from the instructions given here needs to be authorised by A2LOCK Attachments personnel.

Any difficulty with interpretation of the installation instructions in this manual should be resolved between the fitter and A2LOCK Attachments, before proceeding any further - IF IN DOUBT ASK.

Installation personnel must be competent and experienced for this type of work. We would highly recommend at least two people are involved at the time of installation. Installation personnel are required personal protective equipment that is required for Health and Safety regulations. (E.g. Ear Protection, Eye Protection, Foot Protection, etc)

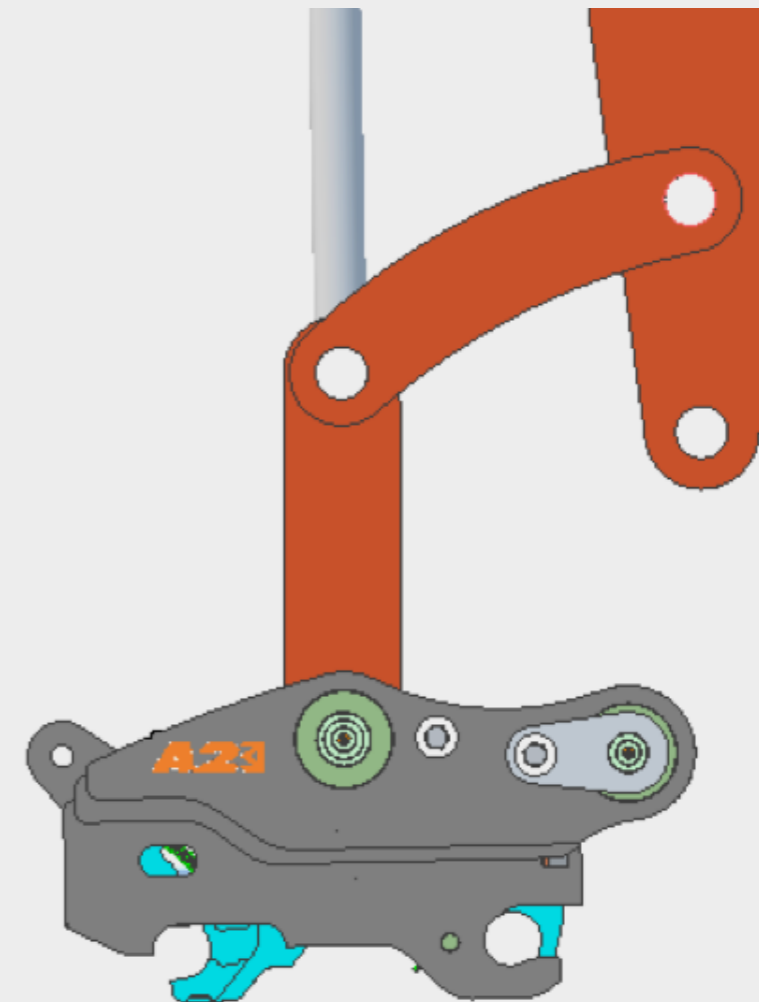
**PLEASE ENSURE ALL HEALTH AND SAFETY REGULATIONS ARE BEING FOLLOWED AT ALL TIME AND COMPLIED WITH.**

**REMINDER** – ENSURE YOU HAVE READ THE PREVIOUS PARTS OF THE MANUAL BEFORE PROCEEDING (Failure to read and understand the full contents of this manual may result in improper Installation, operation or maintenance of the 'MULTI-LOCK Quick Coupler' which in turn could lead to serious injury or death of those associated with the machine).

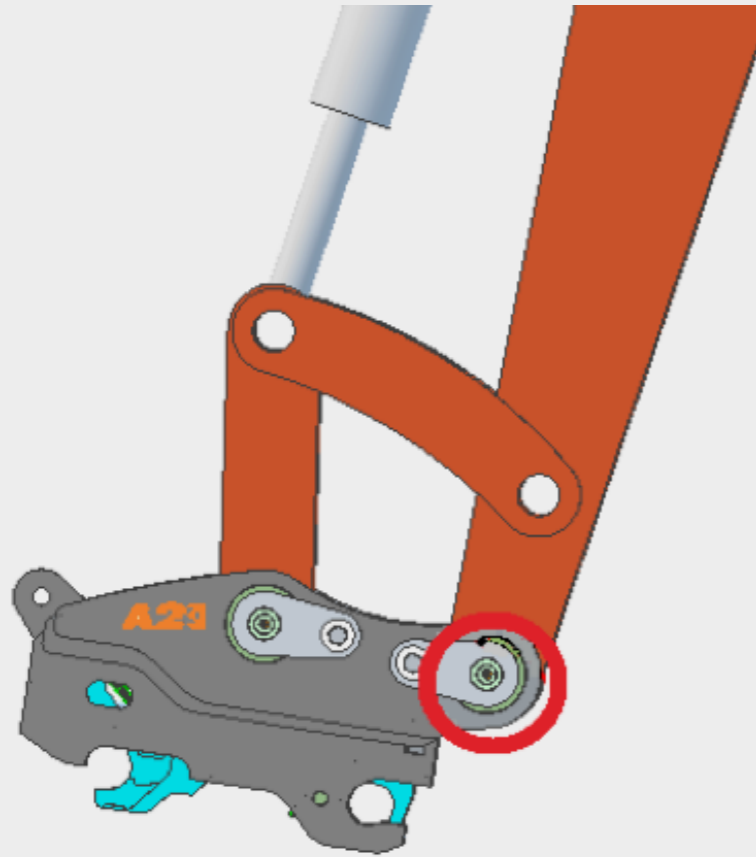
\*\*Due to the large number of Excavator Makes and Models available, it is not possible to provide a rigid set of installation instructions that will cover every situation. Excavator control systems can be complex and sophisticated. Auxiliary connections must be carried out with care to ensure the manufacturer's warranty is not voided. Therefore it is extremely important that only qualified and experienced person carry out the installation. A2LOCK STRONGLY RECOMMENDED that the excavator OEM dealer be consulted to ensure the auxiliary connections are correctly made. \*\*

# FITTING THE COUPLER

1. Carry out a visual inspection of the 'MULTI-LOCK Quick Coupler' and its accessories. Check the packaging for any damage, which might have occurred in transit. Check that all items have been delivered. If you encounter anything, which appears to be damaged, missing or incorrect, then contact A2LOCK Attachments before you proceed any further.
2. Remove any existing attachments from the machine. Some of A2LOCK couplers are supplied with designed hardened mounting pins. If these are not supplied, the coupler is to be mounted using the OEM pins which were supplied with your machine. Only Hardened Pins must be used to fit the Hitch to the Excavator.
3. Align the link arm between the two bosses, on the far side from the cab of the machine. Ensure the O-rings are fitted correctly and aligned. Keep hands clear when doing this operations.
4. Fit one hardened pin. Shim as required to eliminate sideways movement. You may need to remove the coupler to centre the coupler on the dipper arm. Additional shims are available from A2LOCK Attachments if required.



- Retract the crowd cylinder to bring the coupler up to the main dipper and fit the next hardened pin. Shim as required to eliminate sideways movement. You may need to remove the coupler to centre the coupler on the dipper arm. Additional shims are available from A2LOCK Attachments if required.



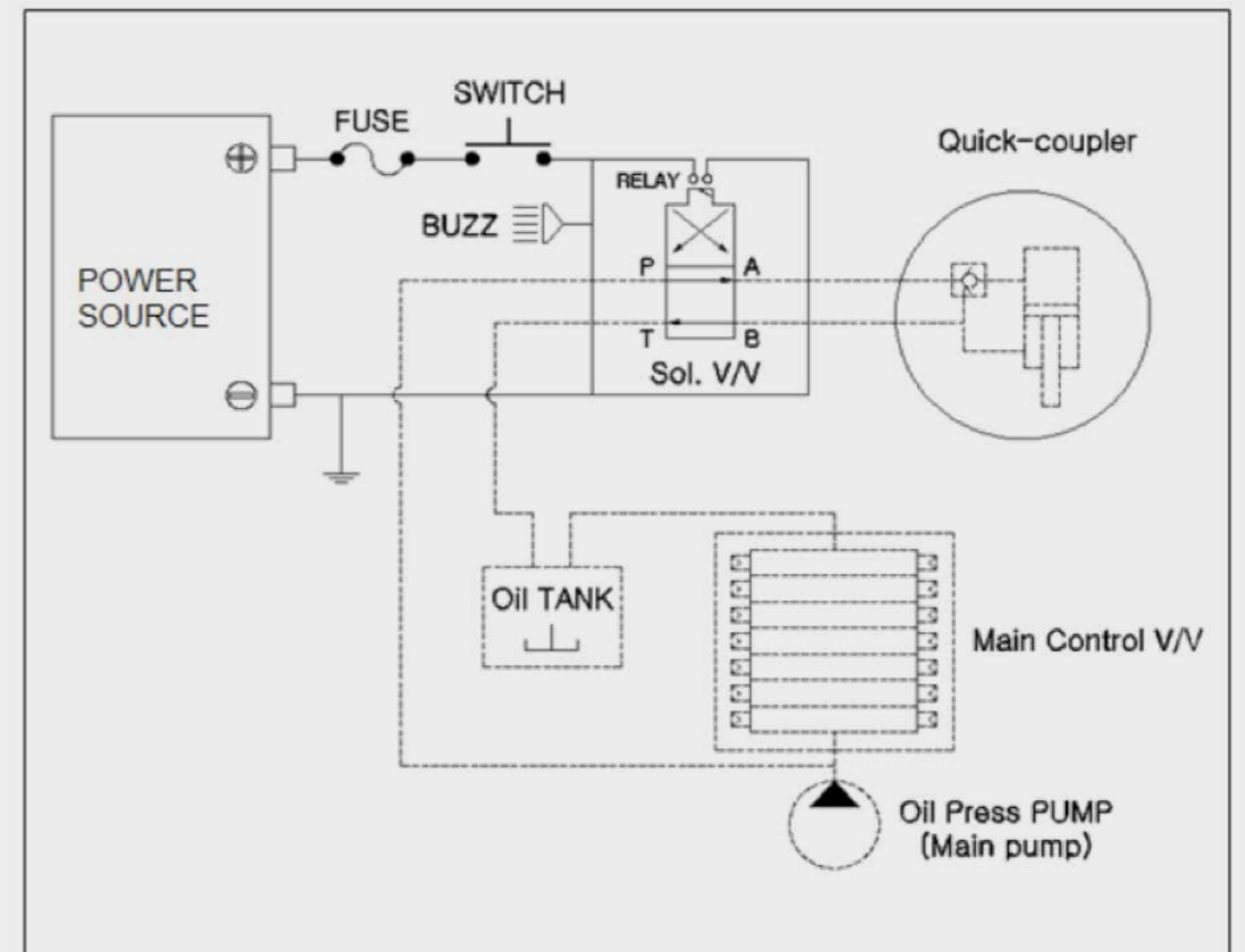
- Fit the retaining pin bolts and sure these have locking device. E.g. nyloc nuts, double nuts, spring washers.
- Grease the pins that the coupler was connected to the excavator with.
- Operate the excavator to ensure there is no interference on both crowd actions.

# HYDRAULIC SYSTEM REQUIREMENTS

NOTE- this is general in nature and is as a recommendation

Hitch Cylinder Pressure	2000-4500 PSI	FLOW low
Tilt Motor Pressure	3000-4000 PSI	FLOW low (to suit speed of operator)

## BASIC SYSTEM SCHEMATIC





# HYDRAULIC HOSES INSTRUCTION

**NOTE - THIS IS GENERAL IN NATURE AND AS EACH MACHINE OF PREFERENCES COULD BE DIFFERENT.**

1. Mark out dipper arm for fitment of brackets
2. Mark out new hose (see dimensions on next page), remove paint as required and remark positions

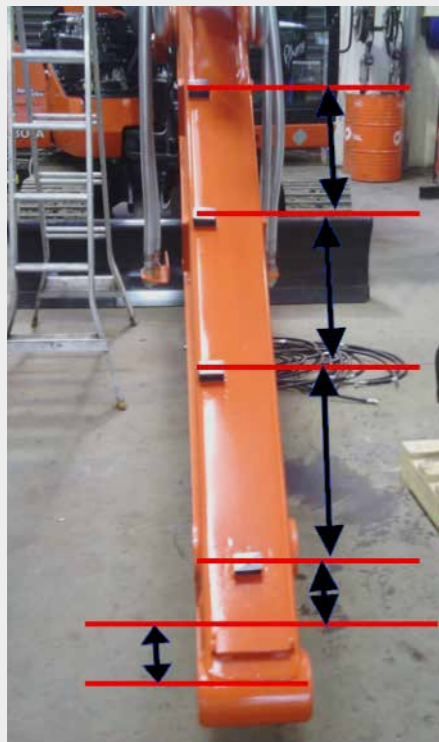


- Using a grinding disk will potentially remove metal as well as paint and weaken boom.

- Face shield optional



3. Position of dipper arm manifold and hose brackets
4. Manifold to suit mm from bottom edge of dipper arm to top edge of manifold:



- 1 bracket – to suit mm from top of manifold
- 2 bracket – to suit mm from 1 bracket
- 3 bracket – to suit mm from 2 bracket
- 4 bracket – to suit mm from 3 bracket

Optional Notes:

- Bottom bracket and manifold are centered on the dipper arm
- The top 3 brackets are aligned with the edge of the dipper arm as shown

# FITTING THE COUPLER

5. Refer to the manufacturers manual to complete all requirements to make the unit safe to weld on, as a minimum disconnect the battery
6. **Relieve tank pressure before modifying any part of the hydraulic circuit**
7. Align manifold with centre line on boom and with top edge level with line 80mm from bottom of dipper arm.
8. Tack weld in place
9. Confirm manifold is square using a set square



- Ensure the unit is safe before commencing welding (refer to manufacturers manual)

10. Weld manifold in place, 2 or 3 runs on bottom and 2 welds on top corners. Ensure top welds will not obstruct fittings seating into manifold properly. File back if required.
11. Use a bolt in the nut hose clamp bracket to hold the bracket in place whilst it is tack welded.

12. Confirm it is central and square, then weld down both sides and repeat for other goes clamp brackets on boom arm.



Check for welding defects:

- Porosity
- Undercut
- Poor penetration
- Cracks
- Lack of fusion
- Inclusion



13. Clean up welds with wire brush, etc. then prime and paint original factory colour.



- Adhere to paint suppliers applications instructions
- Ensure adequate coverage with no runs, drips, etc



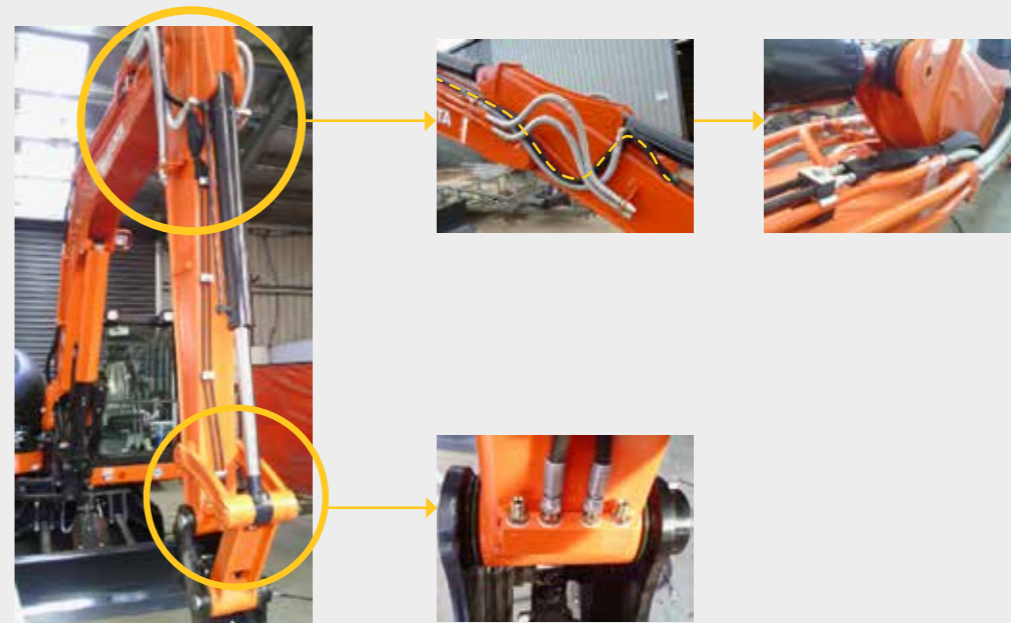
14. Attach fittings into manifold  
15. Refit dog bone, link assembly, factory hoses and hitch to dipper arm



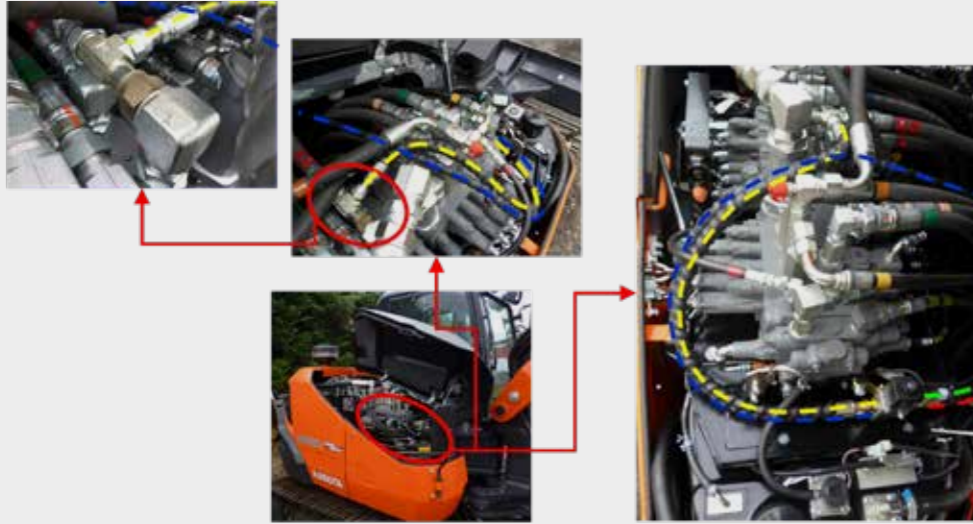
16. Run 2x short hoses with protective wrap from manifold to hitch



17. Run 2x mm hose up dipper arm, using mm hose clamps to secure them in place as shown in photo



18. Run 2x mm hose up dipper arm, using mm hose clamps to secure them in place as shown in photo
19. Fit lines tapping into factory piping as required that produces pressure when crowd action is activated.



20. Operate the hitch and ensure the hitch operates and cycles as expected.
21. The buzzer should sound when hitch is disengaged.
22. Troubleshoot: If the hitch operates the reverse of expectations then the port A and port B lines to the valve need to be swapped over.



## MAINTENANCE GUIDELINE

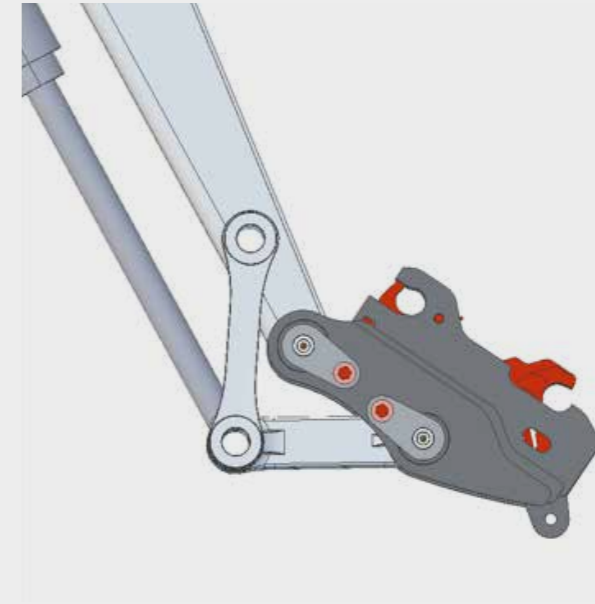
1. Daily Inspection and operation – do a visual inspection of the coupler to ensure all parts of the coupler are in normal state. This means that all parts are intact, have no interference issues with build-up of debris or damage. If possible, perform a function test by going through operation of the coupler.
2. Where there is grease points, please do this daily.
3. Coupler Operating Controls Alarm, warning light, switch are all working
4. No Hydraulic Leaks
5. Both locks are functioning correctly.
6. No Excessive Wear on any coupler parts or Attachment to which it is connecting to.
7. Check all attachment pin retainer bolts and nuts for tightness.

# OPERATING INSTRUCTIONS

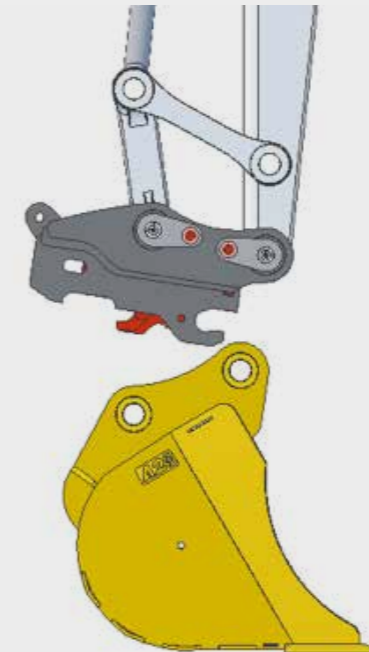
**! WARNING- DO NOT RELEASE OR CHANGE THE BUCKET NEAR ANY PERSON OR IN ANY AREAS THAT MAY RESULT IN AN ACCIDENT OR INJURY OCCURRING.**

### CONNECTING THE COUPLER

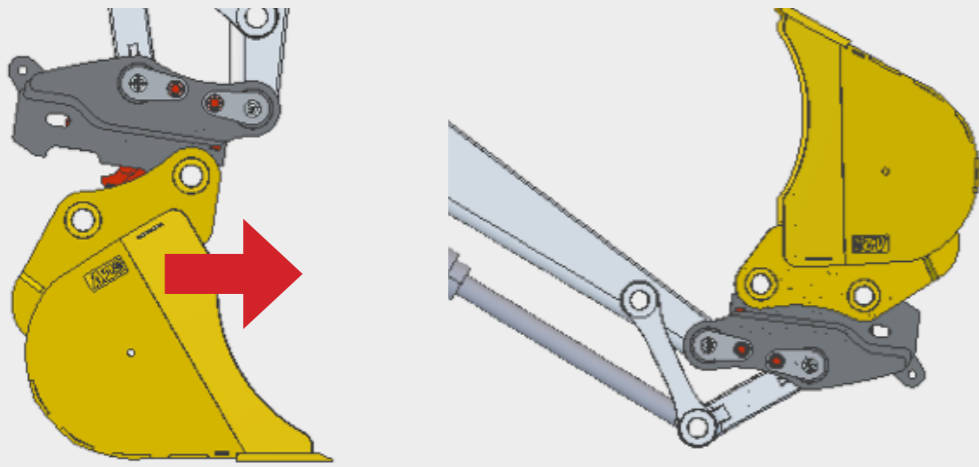
- a. Fully Crowd the coupler in as shown in figure below. Activate the control box power, buzzer will sound, then click activation button. Hold the bucket crowd lever in to activate the hydraulic pump.



- b. After checking that the jaw is fully retracted and the front lock has lifted up, line the coupler up with the desired attachment that you want to pick up.

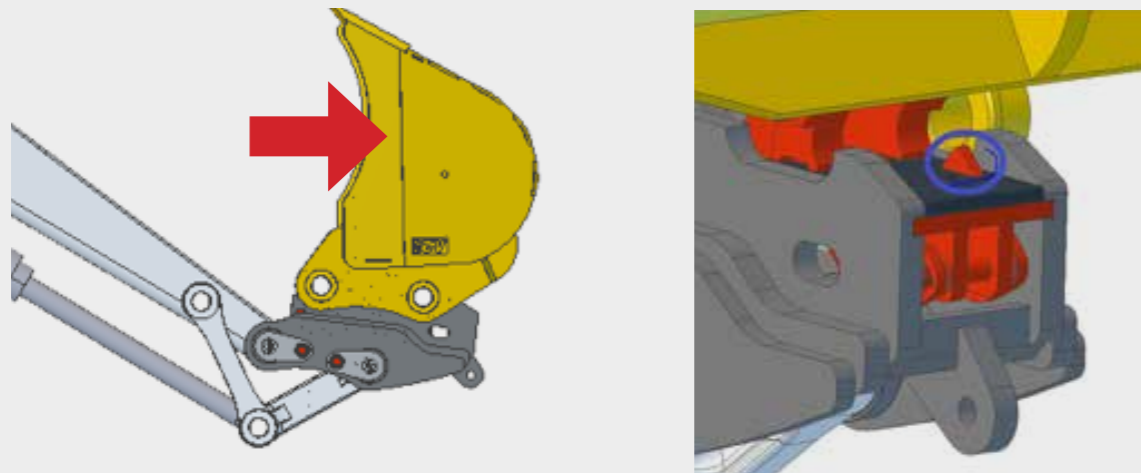


c. Engage the front pin, keep crowding the bucketing and right around to the transport position.

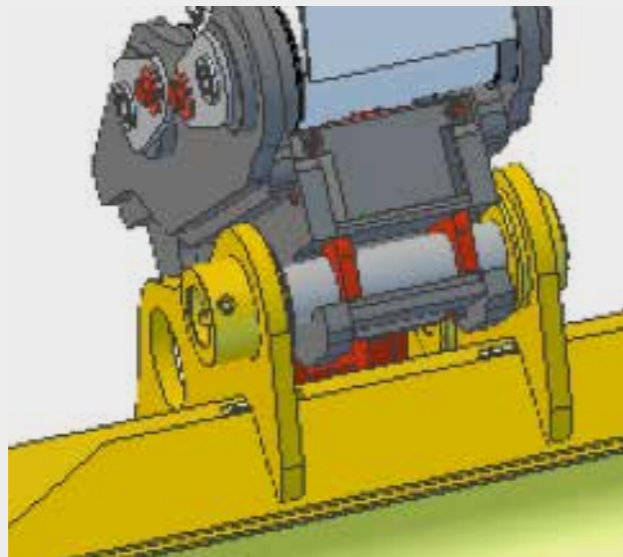


d. Deactivate the power switch. Hold the crowd lever in to activate the hydraulics.

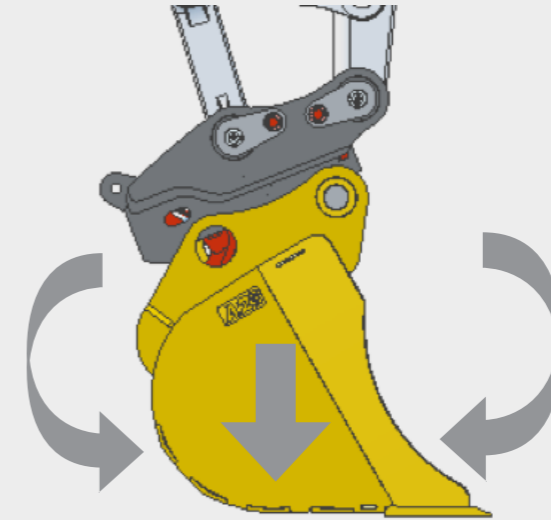
Visually check the rear lock has engaged you should be able to see this from the cab, if not, operator must get out and visually check from a safe distance).



e. Check Front lock has come down and covered the pin.



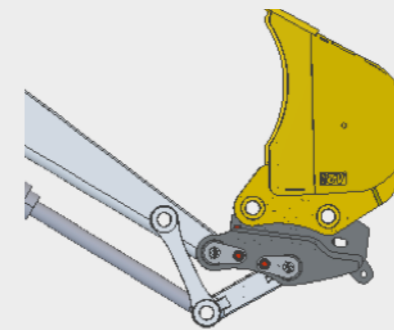
f. Check bucket is fully connected by pushing bucket on the ground in a safe place and gently crowd forward and backwards



**⚠ WARNING- DO NOT RELEASE OR CHANGE THE BUCKET NEAR ANY PERSON OR IN ANY AREAS THAT MAY RESULT IN AN ACCIDENT OR INJURY OCCURRING.**

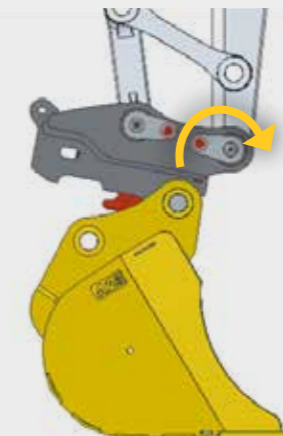
**DISCONNECTING THE COUPLER**

a. Fully Crowd the coupler into the transport position as shown in figure below. Power the control box, buzzer will sound, then click activation button. Hold the bucket crowd lever in to activate the hydraulic pump

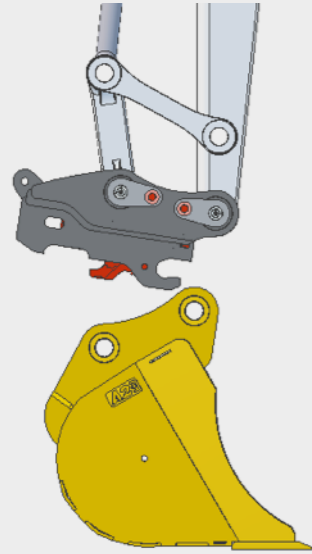


 	<p><b>ATTACH23</b> EQUIPMENT www.attach2.co.nz FREEPHONE 0800 100 683</p>	<p><b>INSTRUCTIONS</b></p> <ol style="list-style-type: none"> <li>Put attachment in Transport Position</li> <li>Push Power Button</li> <li>Push Activate Button within 5 seconds</li> <li>Remove Attachment</li> <li>Push Power Button to deactivate solenoid</li> <li>Hitch will resume Locked Position</li> </ol> <p><small>Note: Power will be deactivated from unit after 60 seconds once activated</small></p>
	<p>POWER ACTIVATE</p>	

b. When the jaw is fully retracted and the front lock has lifted up, lower the attachment to the ground and slowly crowd the coupler away off the attachment



- c. Lift the dipper arm until the coupler is completely disengaged from the attachment pin. The attachment is now disengaged. Deactivate the power button by pushing power



**ATTACH23**  
EQUIPMENT  
www.attach2.co.nz  
FREEPHONE 0800 100 683

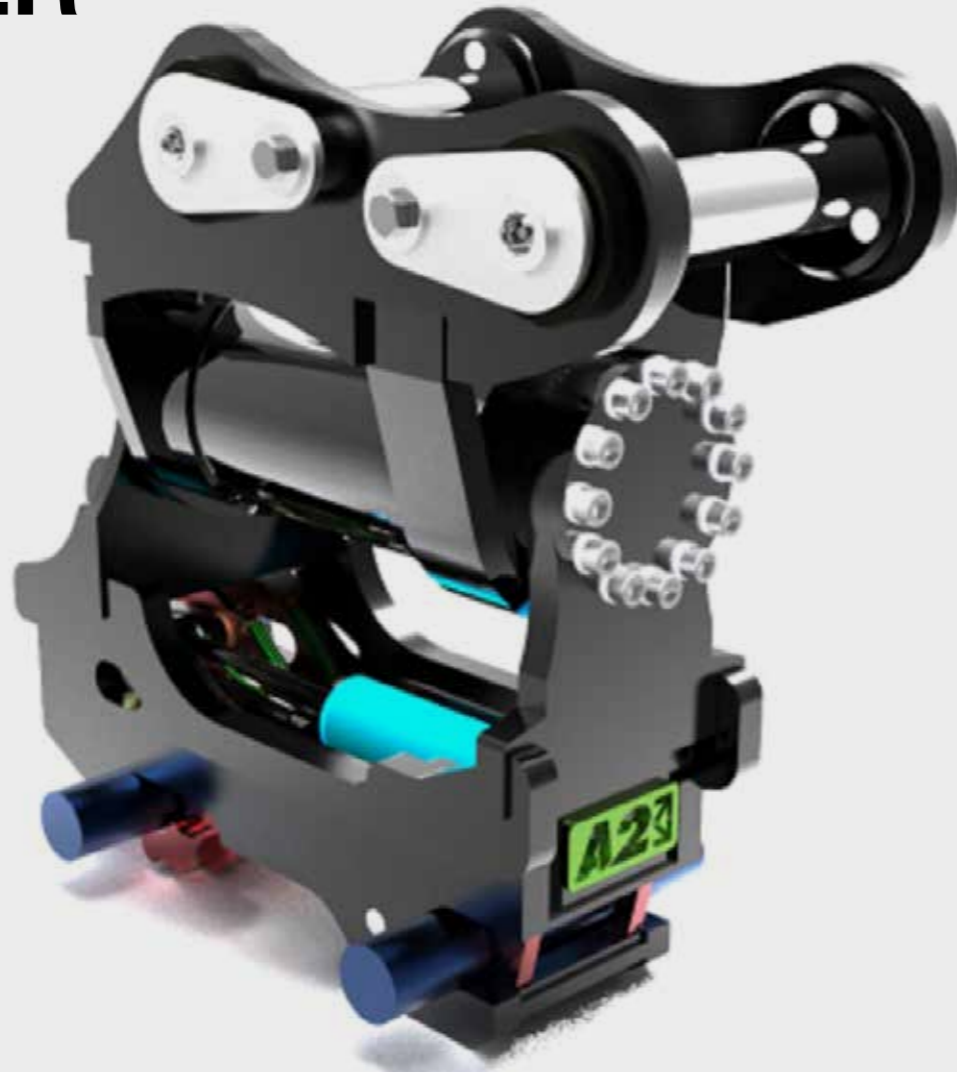
**INSTRUCTIONS**

1. Put attachment in Transport Position
2. Push Power Button
3. Push Activate Button within 5 seconds
4. Remove Attachment
5. Push Power Button to deactivate solenoid
6. Hitch will resume Locked Position

Note: Power will be deactivated from unit after 60 seconds once activated

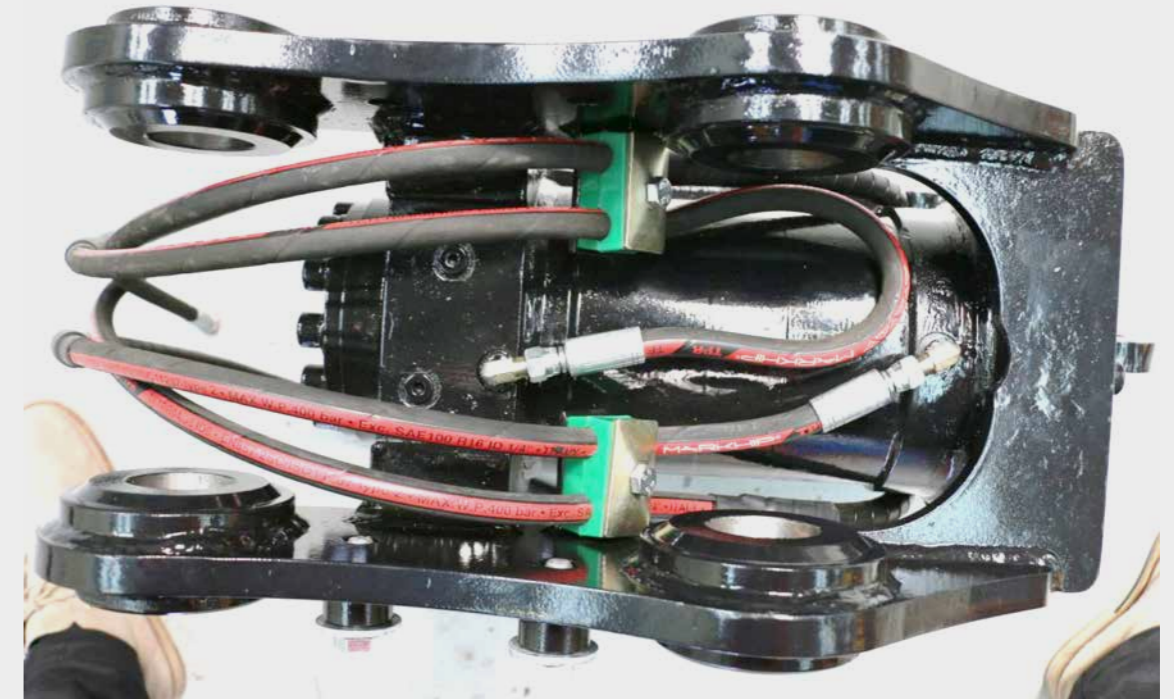
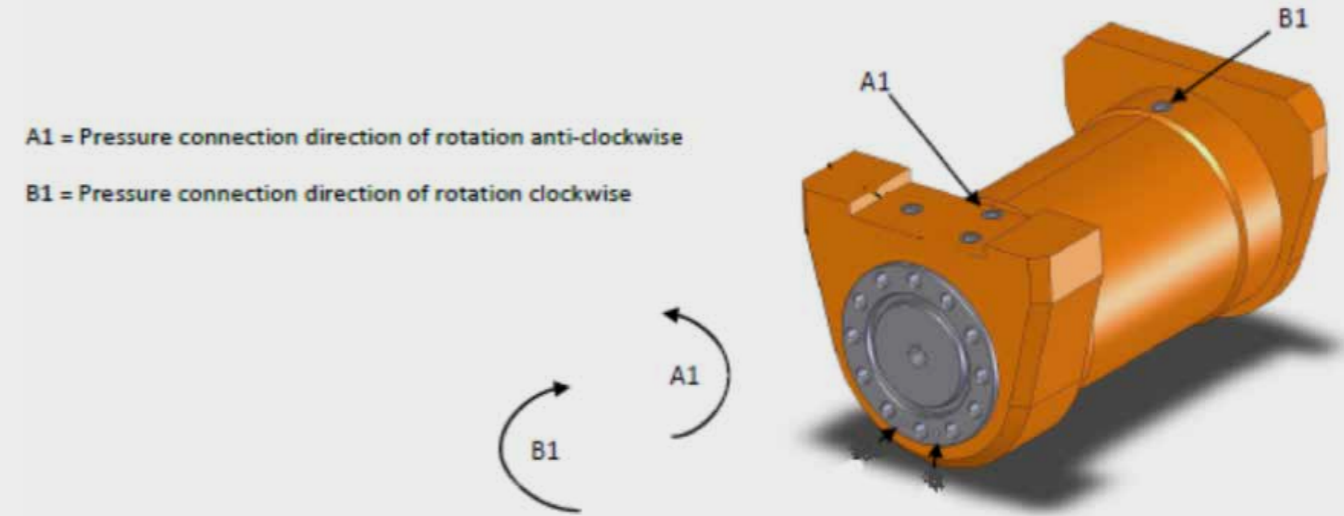
# HYDRAULIC TILTING MOTOR COUPLER

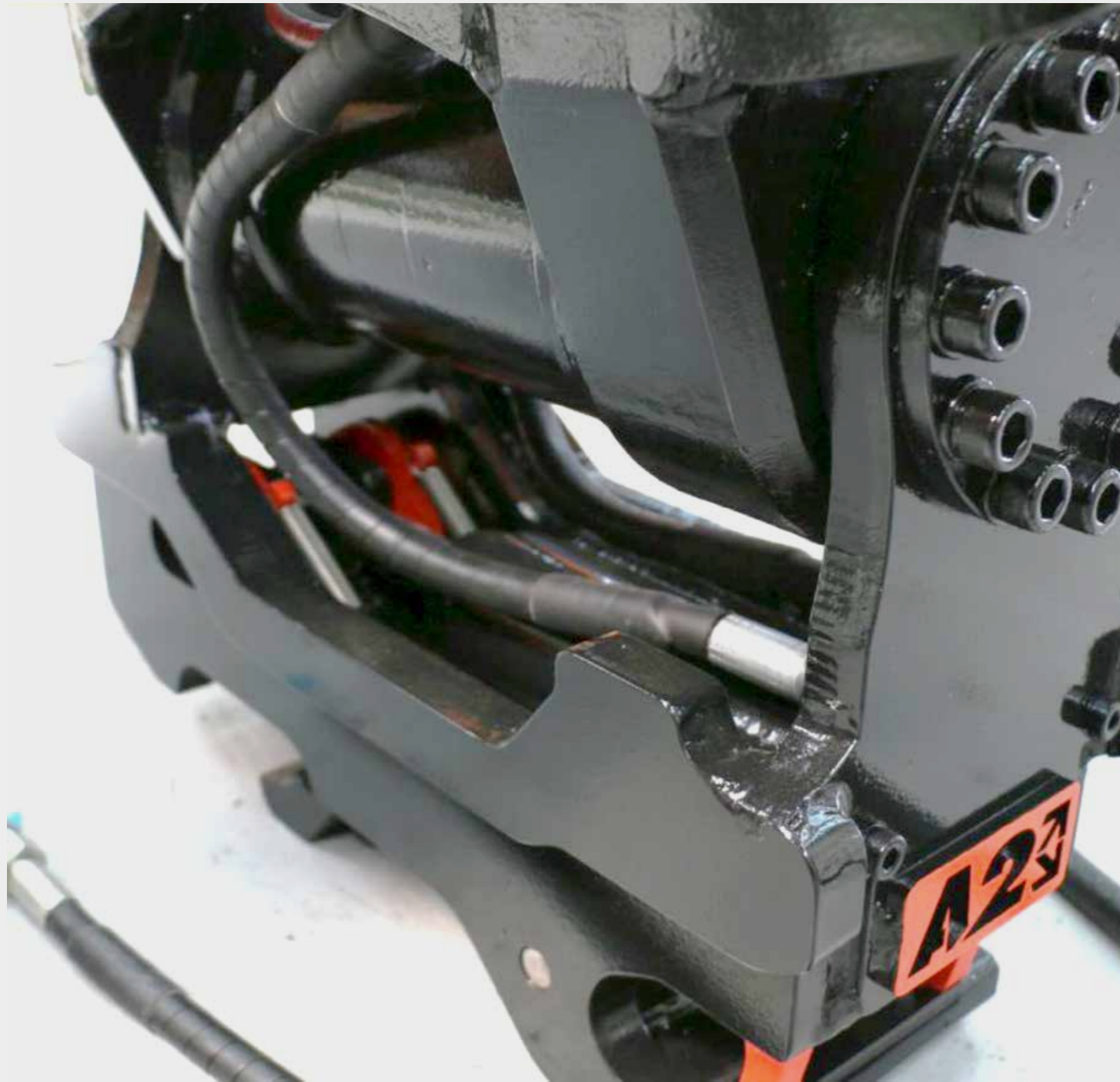
ADDITIONAL INFORMATION



For fitment of the tilting coupler, the following additional information will need to be followed.

- A1 and B1 as shown in the drawing below are for the rotation of the Tilting Motor.
- The Tilt Motor has a Internal Relief Valve for Protection. This is set at 310 Bar and Cannot be Changed.
- Test tilting both ways to ensure hoses will not be damaged.





# REGISTRATION

Date of Delivery:

---

Name:

---

Company

---

Phone Number

---

E-mail Address:

---

I confirm that the operator has read and understands the Operating Instruction and Warranty Terms.

---

Signature :

---