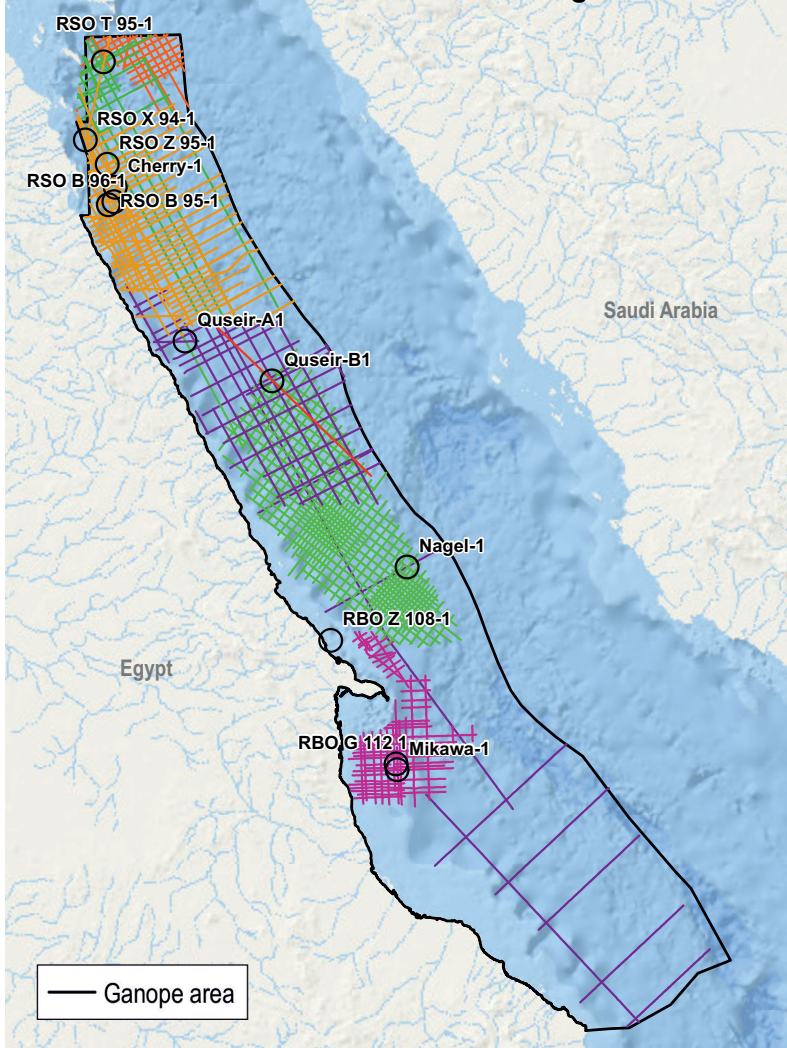
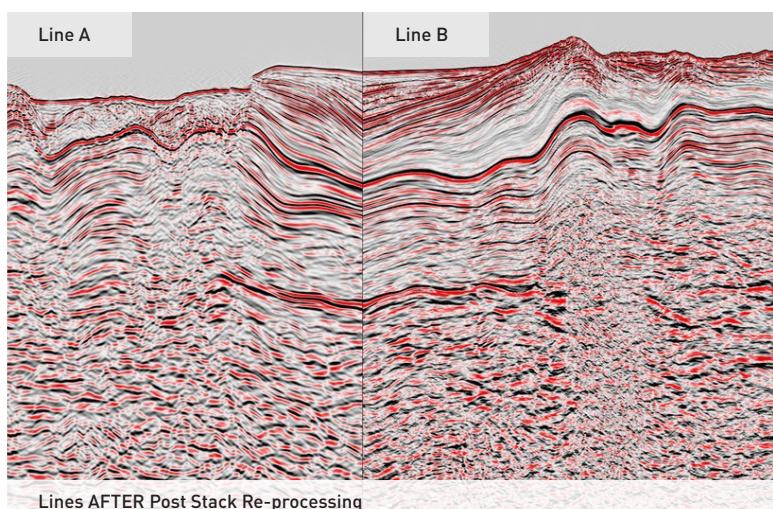
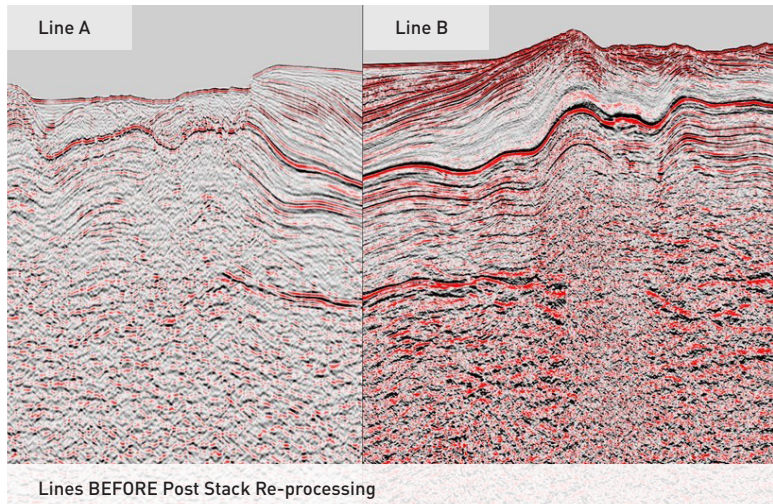


## Vintage 2D seismic



## Intersecting line of different 2D Vintages



# Egypt Red Sea Regional Bid Round Data Package

A multidisciplinary data package that integrates all existing 2D seismic data, well data and integrated interpretation studies is now available.

## Content is available in Petrel/ArcGIS/raw XYZ format

- Approximately 16,500 km seismic 2D data of 8 vintages. Post-stack re-processing (signal enhancement, phase and amplitude match, correlation with well logs). One consistent output volume
- 11 conditioned acoustic well logs. Additional output of synthetic seismograms
- Well derived formation tops
- Gravity and magnetic interpretation pack. Integrated legacy data, public domain data, and structural mapping
- Slick and seep study reports
- Surface exposure source rock and reservoir analysis
- Literature study of the regional geology; including relevant cross sections
- Core data (where available)
- Geological reports

For more information, please contact TGS or Schlumberger



UK Tel: +44 208 339 4200  
Email: amesales@tgs.com  
EgyptMC@slb.com

See the energy at [TGS.com](https://www.tgs.com)

