



bennett
day school



AUXILIARY PROGRAMS

TRIMESTER ONE

WEEKLY OVERVIEW

Trimester 1

	MONDAY	TUESDAY	WEDNESDAY	THURSDAY	FRIDAY	
PK-4TH	MORNINGCARE	MORNINGCARE	MORNINGCARE	MORNINGCARE	MORNINGCARE	
	AFTERCARE	AFTERCARE	AFTERCARE	AFTERCARE	AFTERCARE	
PK ONLY	STAY & PLAY	STAY & PLAY	STAY & PLAY	STAY & PLAY	STAY & PLAY	
AGE??	INDEPENDENT MUSIC INSTRUCTION	INDEPENDENT MUSIC INSTRUCTION	INDEPENDENT MUSIC INSTRUCTION	INDEPENDENT MUSIC INSTRUCTION	INDEPENDENT MUSIC INSTRUCTION	
PK/JK	Sticky Fingers	Snapology-Kinderbots	Garden Club	Music & Movement	Slimy Science	
	Drum Circle	Swift Fencing (JK only)	George's Gym	Adventures in Literacy	Art Exploration	
	Bennett Ballers		Art Exploration	CircEsteem (JK only)		
			Bollywood Groove			
SK-4TH	Bennett Soccer	Swift Fencing	Bollywood Groove	Comic Book Design	Beginning Piano Group (1st-3rd)	
	Robot Design	Joffrey Ballet	Code Play Learn (2nd-4th)	Bennett Baseball	Let's Perform! (1st-2nd)	
	Improv	Karate	Bennett Ballers	Sticky Fingers	SlackLine/Juggling	
		Young Architects	Neighborhood Explorer's Club	CircEsteem		
		Jewelry Design	Goldfish Swimming			
			Tabletop Game Design			

MONDAY - FRIDAY* Trimester 1

	COST	AGE GROUP	DESCRIPTION
MORNINGCARE	\$9 Pre-registered use \$12 Drop-in use	PK-4th	MorningCare begins at 7:30 a.m. Monday through Friday and is staffed at a 10:1 student to teacher ratio. Students who participate in MorningCare will enjoy breakfast and transition into their school day. Students will be escorted to their classrooms, as appropriate for the age, at classroom start times. The MorningCare program begins Tuesday, September 4, 2018, and is open every day that school is in session, with the exception of Harvest Festivals.
STAY AND PLAY	\$18 Pre-registered use \$25 drop in use	PreK	<p>Stay and Play runs from 11:30-2:45. Monday through Friday when school is in session. Stay and Play is in the PreK classroom and is staffed at a 10:1 student to teacher ratio. Maintaining consistency is valuable for the transitioning PreK students, and the staffing of this extended day program is designed with that need in mind. We strongly encourage families to use Stay and Play in a consistent way; choose the days your child will attend per the trimester to help them build a predictable routine and expectation for his/her school week.</p> <p>PreK students who participate in Stay and Play will remain in their classroom for a hot lunch, enjoy a recess time, story time, nap time, and open play. Following lunch, PreK students will transition to a quiet rest time.</p>
AFTERCARE	<p>AfterCare Block 1 (Dismissal-4:45) \$14 Pre-registered use PK/JK \$18 Drop in use PK/JK \$12 Pre-registered use SK-4th \$16 Drop in use SK-4th</p> <p>After Care Block 2 (4:45-6:00) \$10 Pre-registered use PK-4th \$14 Drop in use PK-4th</p> <p>Half Day AfterCare (Wednesdays only)* \$18 Pre-registered use JK (11:30-2:45) \$25 Drop-in use JK (11:30-2:45) \$15 Pre-registered SK-4th (12:45-3:30) \$22 Drop-in use SK-4th (12:45-3:30)</p>	PK-4th	<p>AfterCare is available every afternoon that school is in session, and all are welcome! Students in AfterCare are grouped based upon grade level and have age-appropriate scheduled activities in addition to free play. All students receive an afternoon snack. At 4:45 there will be an additional car line dismissal.</p> <p>Block 2 AfterCare participants will continue to participate in age appropriate activities and free play.</p> <p>On Half Days, students can join the AfterCare staff in games, special projects, and more fun! As always students are grouped by grade level and will engage in developmentally appropriate activities in addition to free play.</p>
INDEPENDENT MUSIC INSTRUCTION			

*Halfday AfterCare offered Wednesdays only.

DROP IN VS. PRE-REGISTERED USE

All Auxiliary programs can be registered by using [Ultracamp](http://Ultracamp.com). If registration is closed an email can be sent to cally.vevers@bennettday.org for a drop-in registration. Recurring users of MorningCare, AfterCare, and Stay and Play should pre-register for discounted rates. Drop in users will be billed by the following Monday via Ultracamp.

REGISTER TODAY!
ULTRACAMP.COM

MORNINGCARE

MorningCare begins at 7:30 a.m. Monday through Friday and is staffed at a 10:1 student to teacher ratio. Students who participate in MorningCare will enjoy breakfast and transition into their school day. Students will be escorted to their classrooms, as appropriate for the age, at classroom start times. The MorningCare program begins Tuesday, September 4, 2018, and is open every day that school is in session, with the exception of Harvest Festivals.

MorningCare is \$9 per day for pre-registered (at least 24 hours notice), it is \$12 per day for drop-in use.

Trimester Use Policy for MorningCare

At the beginning of the trimester, you may sign up for up to five days of weekly regular use of the MorningCare program through Ultracamp. Payments can be made in full upon registration or broken into three scheduled payments. You may change the day of the week you have chosen at any time during the trimester, but you may not accumulate days. If your child is absent, you may not apply the missed day to a different week, but you may apply that missed day during the week of the absence. There are no refunds for Trimester Use MorningCare after September 15 (Trimester 1), December 15 (Trimester 2), and March 15 (Trimester 3).

You may add an additional Trimester Use day at anytime during a trimester. The cost will be prorated and charged in full at the next billing cycle (15th of the month). There is no refund if you decide to no longer use a Morning Care Trimester Use day in a given trimester.

STAY AND PLAY (PREK ONLY)

Stay and Play begins at 11:30 a.m. Monday through Friday when school is in session. Stay and Play is in the PreK classroom and is staffed at a 10:1 student to teacher ratio. Maintaining consistency is valuable for the transitioning PreK students, and the staffing of this extended day program is designed with that need in mind. We strongly encourage families to use Stay and Play in a consistent way; choose the days your child will attend per the trimester to help them build a predictable routine and expectation for his/her school week.

PreK students who participate in Stay and Play will remain in their classroom for a hot lunch, enjoy a recess time, story time, nap time, and open play. Following lunch, PreK students will transition to a quiet rest time. This is a period for children to nap or rest after a busy morning. Each child will be provided with a child-sized cot to rest on in the afternoon. These cots will be set 2 feet apart during naptime. Each family is responsible for sending a blanket and small pillow with your child on the first day of every week. On the last day of every week, the cots will be stripped and the sheets sent out to be washed and the pillow and blanket sent home for washing. The cots themselves will be sanitized each week. Please send your child's bedding in a small tote that can be used to transport linens back and forth each week. In addition to bedding, your child may bring one SMALL STUFFED toy with him/her to keep on his/her individual cot.

Stay and Play ends at 2:45 p.m. At this time, PreK students can be picked up between 2:45-3:00 p.m. or transition to AfterCare if signed up separately. Stay and Play is available every day that school is in session, unless notified otherwise, with the exception of Harvest Festivals, beginning Tuesday, September 10, 2018, and runs through Thursday, June 6, 2019.

There are two ways to sign up for Stay and Play - Trimester Use and Monthly Use. Stay and Play is \$18 per day for trimester/monthly use or \$25 per day for drop in use (must provide 24 hours notice).

Trimester Use Policy for Stay and Play

At the beginning of the trimester, you may sign up for up to five days (Monday - Friday) of weekly regular use of the Stay and Play program. You may enroll via Ultracamp and can either prepay or set up automated monthly payments. You may change the day of the week you have chosen on a monthly basis. If your child is absent on the day(s) they are signed up for Stay and Play, you may not apply the missed day to a different day or week in the month. There are no refunds for Stay and Play after September 15 (Trimester 1), December 15 (Trimester 2), and March 15 (Trimester 3).

Monthly Use Policy for Stay and Play

On or before the last day of the prior month, you may sign up for one to five days per week of the Stay and Play program for the month ahead. You may not change the day of the week you have chosen at any time during the month. If your child is absent on the day(s) they are signed up for Stay and Play, you may not apply the missed day to a different day or week in the month. You may terminate use of Stay and Play at any time, but there are no refunds for Monthly Use of Stay and Play after the 12th of the month.

Stay and Play Late Pick Up Policy

At 3:00 p.m., all students still awaiting pick up from Stay and Play will be enrolled in AfterCare. A \$50 Unplanned AfterCare Enrollment Fee will be applied for each late pick up. If you accumulate three (3) or more late pick-ups from Stay and Play in a trimester, you may be suspended from Stay and Play programming until an appropriate plan has been established in partnership with the Principal.



AFTERCARE

AfterCare is available every afternoon that school is in session, and all are welcome! Students in AfterCare are grouped based upon grade level and have age-appropriate scheduled activities in addition to free play. Students are at a 10:1 ratio. All students receive an afternoon snack. There are three blocks of AfterCare Block 1 runs from dismissal until 4:45.

At 4:45 there will be a car line dismissal. Block 2 runs from 4:45-6:00. AfterCare participants will continue to participate in age appropriate activities and free play. Families can pick up their child from the front desk. On half days there will be an Extended Day Block which runs from dismissal until 3:15. If a child is in a B&B and would like to remain in AfterCare they have the option to add on to their day. Students can register for the trimester or drop in to AfterCare.

BENNETT & BEYOND PRICING & VOLUME DISCOUNTS

Bennett & Beyonds are prices are based on factors such as vendor costs or material expenses. B&Bs are either \$20 or \$30 per week class is held. Due to days of school or vendor conflicts there may be some B&Bs which vary in length. Bennett also offers a volume discount.

Bennett & Beyonds Number per Week	Price Per Class
1 Class/Week	\$20 or \$30
2 Classes/Week	\$18 or \$27
3+ Classes/Week	\$16 or \$24

DAY OFF CAMPS

Bennett Day Camps are happy to provide a variety of fun and engaging camps for Conference Days, Professional Development Days, and other days off of school. Camps are run by the AfterCare staff and are run similarly to the Bennett Summer Camp. Each morning campers participate in Outdoor Exploration, Field Games, and Art Activities. Each afternoon campers are able to choose their electives. Afternoon Choices ranges from STEAM based projects, Artistic Exploration, Sports Instruction, Team Building Games, and specialty vendors. Sign up for the Day Off Camp package to receive a free day during the school year. We also offer a 15% sibling discount. Full day camp is available for PK-4th grade and begins at 8:15 and dismisses at 3:15. Half Day camp is available for PK and JK campers and runs from 8:15-11:30. Camps are \$85 per full day, \$55 per half day. Camp package Full Day \$425, Half Day \$275.

October 19, October 24 (SK-4), November 7 (PK/JK), November 21, January 21 and February 6

RECESS CAMP PACKAGE DEAL

Bennett Day Camps are happy to provide a daily or weekly camps during every Bennett School Recess. Camps are run by the AfterCare staff and are run similarly to the Bennett Summer Camp. Each morning campers participate in Outdoor Exploration, Field Games, and Art Activities. Each afternoon campers are able to choose their electives. Afternoon Choices ranges from STEAM based projects, Artistic Exploration, Sports Instruction, Team Building Games, and specialty vendors.

Sign up for the entire week to receive 25% off. We also offer a 15% sibling discount. Full day camp is available for PK-4th grade and begins at 8:15 and dismisses at 3:15. Half Day camp is available for PK and JK campers and runs from 8:15-11:30. Camps are \$85 per full day, \$55 per half day. Camp package Full Day \$425, Half Day \$275.

Dec 26-28, Jan 2-4, Feb 18-22, and April 12-15.

BEHAVIOR EXPECTATIONS

At Bennett Day school, all members of the community, students, faculty, and parents, strive to reflect the School values of citizenship, integrity, and social responsibility as we move through each school day. For students, this means learning to take ownership of their choices and our community. AfterCare Leaders support students in this work by setting a positive tone and reinforcing good choices.

Reinforcement includes verbal acknowledgement of positive choices, redirection to a different activity, and an emphasis on positive behavior when a conflict does occur. Our approach allows us to maintain a proactive approach to discipline to encourage age-appropriate behavior from children.

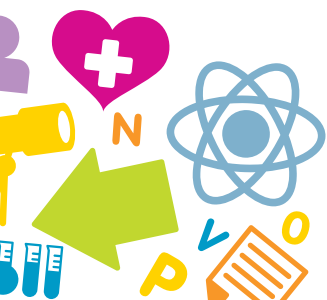
AfterCare/B&B defines unsafe behavior as any behavior which could result in physical or emotional injury (biting, teasing, tantrums, extreme oppositional behavior, etc). During AfterCare/B&B if a child displays unsafe behavior it will be communicated to the parents and documented. After a second incident the parents, AfterCare team, and Admin team will meet to develop an action plan and/or behavior contract for a successful AfterCare/B&B experience. After a third incident the child will not be permitted to attend AfterCare/B&B for the remainder of the trimester.

Physical Altercations

If the behavioral problem is physical all the above steps will be taken. Following the first physical altercation the child (or their parents depending on age) will immediately meet with the Administrative and AfterCare teams to develop an action plan. The second offense will result in the child changing B&B classes or taking a one week break from AfterCare. The third altercation the child will not be permitted to attend AfterCare/B&B for the remainder of the trimester.

B&B Disruptive Behavior Policy

Bennett & Beyonds are extracurricular activities designed to be engaging, fun, and develop skill. If a student has difficulty focusing or participating in the program at the expense of others they will be removed from the class and brought to AfterCare. If this occurs three times they will be removed from the class for the remainder of the trimester.



MONDAY Trimester 1

	COST/DATES	AGE	DESCRIPTION	
MORNINGCARE	\$9 Pre-registered use \$12 Drop-in use	PK-4th	MorningCare begins Tuesday, September 4, 2018, and is open every day that school is in session, with the exception of Harvest Festivals.	
STAY AND PLAY	\$18 Pre-registered use \$25 Drop-in use	PK only	PreK students who participate in Stay and Play will remain in their classroom for a hot lunch, enjoy a recess time, story time, nap time, and open play. Following lunch, PreK students will transition to a quiet rest time.	
AFTERCARE	AfterCare Block 1 + 2 Pre-registered + Drop-in rates vary	PK-4th	Students in AfterCare are grouped based upon grade level and have age-appropriate scheduled activities in addition to free play. All students receive an afternoon snack. At 4:45 there will be an additional car line dismissal.	
INDEPENDENT MUSIC INSTRUCTION				
STICKY FINGERS Cafeteria	\$300 9/17, 9/24, 10/1, 10/8, 10/15, 10/22, 10/29, 11/5, 11/12, 11/19	PK/JK	Let your child release their inner chef! Students will prepare and eat healthy, international inspired recipes all while learning to cook in a fun, engaging, hands-on and real-world way! Our professional chef instructors will reinforce kitchen skills associated with our weekly recipes and emphasize each area of cooking: From discovering new cooking techniques, using the freshest ingredients, learning fun nutrition facts as we practice proper measurements, while using a wide array of cooking utensils.	
DRUM CIRCLE Music Room	\$200 9/17, 9/24, 10/1, 10/8, 10/15, 10/22, 10/29, 11/5, 11/12, 11/19	PK/JK/SK	Drum Circles blends together dance, art, and movement! Each week students will create their own form of percussion! Next we'll use our new instruments to play games and move our bodies.	
BENNETT BALLERS	\$200 9/17, 9/24, 10/1, 10/8, 10/15, 10/22, 10/29, 11/5, 11/12, 11/19	PK/JK	Each session will feature 2-3 weeks of Basketball, Baseball, Soccer, and Handball. Each week players develop fundamental skills through dynamic games using age appropriate equipment. Small group sizes ensure safety and fun and allows coaches to focus on good sportsmanship and teamwork.	
BENNETT SOCCER Field/Gym	\$200 9/10, 9/17, 9/24, 10/1, 10/8, 10/15, 10/22, 10/29, 11/5, 11/12	SK-4th	Each week players will spend 30 minutes working on skill development and 30 minutes scrimmaging. Coaches will work in small groups to ensure players are developing fundamental soccer skills and having fun!	
ROBOT DESIGN TesLab	\$300 9/10, 9/17, 9/24, 10/1, 10/8, 10/15, 10/22, 10/29, 11/5, 11/12	SK-4th	From "make it go!" to robotics pro. LEGO, VEX, Wearable Tech, and more. Students will explore how robots are implemented in everyday life and learn to design, build, and operate their own!	
IMPROV Mr. McDermott's classroom	\$300 9/10, 9/17, 9/24, 10/1, 10/8, 10/15, 10/22, 10/29, 11/5, 11/12	3rd-4th	Chicago is home to the largest improvisation comedy scene in the world! Enroll your child not only for them to learn what improv is, but to be a part of a fun environment where most of the fun involved learning to make mistakes and be goofy. What appears to be just a entertaining art form actually helps kids learn to support their peers, try new things, and become comfortable performing in front of a group of people... it's just all happens to be disguised while playing fun games and laughing for an hour!	

All Auxiliary programs can be registered by using [Ultracamp](#).

TUESDAY Trimester 1

	COST/DATES	AGE	DESCRIPTION	
MORNINGCARE	\$9 Pre-registered use \$12 Drop-in use	PK-4th	MorningCare begins Tuesday, September 4, 2018, and is open every day that school is in session, with the exception of Harvest Festivals.	
STAY AND PLAY	\$18 Pre-registered use \$25 Drop-in use	PK only	PreK students who participate in Stay and Play will remain in their classroom for a hot lunch, enjoy a recess time, story time, nap time, and open play. Following lunch, PreK students will transition to a quiet rest time.	
AFTERCARE	AfterCare Block 1 + 2 Pre-registered + Drop-in rates vary	PK-4th	Students in AfterCare are grouped based upon grade level and have age-appropriate scheduled activities in addition to free play. All students receive an afternoon snack. At 4:45 there will be an additional car line dismissal.	
INDEPENDENT MUSIC INSTRUCTION				
SNAPOLOGY- KINDERBOTS	\$300 9/18, 9/25, 10/9, 10/16, 10/23, 10/30, 11/6, 11/13, 11/20	PK/JK	Children will begin to explore the world of robotics as they build simple models that teach the fundamentals of robotic design. Whether learning about sensors while building drills and magic wands, or discovering ways that gears & pulleys create movement while building helicopters & robotic dogs, your child is sure to have a great time.	
SWIFT FENCING	\$300 9/18, 9/25, 10/9, 10/16, 10/23, 10/30, 11/6, 11/13, 11/20	JK-4th	This class will combine a fun and educational introduction to fencing. Fencing is a fun sport that can build strength, quick thinking, and mobility while getting a great workout. This class will cover the basics of fencing: advance, retreat, lunge, attack, and counterattack. Students with some experience are welcome to return. Skills learned from previous sessions will be enhanced. Swift will provide all equipment. Led by Swift Fencing.	
SWIFT FENCING	\$300 9/18, 9/25, 10/9, 10/16, 10/23, 10/30, 11/6, 11/13, 11/20	JK-4th	This class will combine a fun and educational introduction to fencing. Fencing is a fun sport that can build strength, quick thinking, and mobility while getting a great workout. This class will cover the basics of fencing: advance, retreat, lunge, attack, and counterattack. Students with some experience are welcome to return. Skills learned from previous sessions will be enhanced. Swift will provide all equipment. Led by Swift Fencing.	
JOFFREY BALLET Music Room	\$300 9/11, 9/18, 9/25, 10/9, 10/16, 10/23, 10/30, 11/6, 11/13	SK-4th	Dance integration will incorporate ballet and jazz. The Joffrey Ballet focuses on social and emotional learning through the art of dance. Their curriculum enables students to develop character and life skills; such as respect, teamwork and confidence through the study of dance. Students will be introduced to ballet positions, posture, stretching techniques and basic ballet instruction.	
KARATE	\$300 9/11, 9/25, 10/9, 10/16, 10/23, 10/30, 11/6, 11/13	SK-4th	Our school programs are a great opportunity for children and youth to participate in FMA programs onsite at their schools. Classes are held before, during, or after school. Our program not only teaches the strong foundations of traditional Japanese Shotokan karate, but also cultivates important life skills for children of all ages. Our emphasis on character development encourages children to be respectful, courteous, humble, and thoughtful of others. Good deeds at home, school, and in the community are discussed and praised in class. We employ our S.A.F.E. curriculum, which guides the students in developing the skills to deal with threatening and non-threatening situations with integrity and intelligence.	
YOUNG ARCHITECTS Mr. Lockwood-Bean	\$200 9/11, 9/18, 9/25, 10/9, 10/16, 10/23, 10/30, 11/6, 11/13	SK-4th	Explore concepts in physics, architecture, and mechanical and structural engineering using Legos! Find inventive solutions in a fun-filled context that supports the growth of young minds through hands-on, minds-on learning.	
JEWELRY DESIGN Ms. Weber's Art Room	\$300 9/11, 9/18, 9/25, 10/9, 10/16, 10/23, 10/30, 11/6, 11/13	SK-4th	Each week students will embark on an exploration into jewelry making. Students will look at the history of jewelry and then emphasize their own creative expression and design. Students will use a variety of materials including metal, wood, glass, found objects, and paper to name a few. Art Jewelry class projects will be a mix of jewelry and small objects. Kids will be taught basic knowledge of tools and materials. Kids will learn about artists, wire forming, found objects, stamping, texturing, and more... and they get to bring the bling home!	

All Auxiliary programs can be registered by using [Ultracamp](#).

WEDNESDAY Trimester 1

	COST/DATES	AGE	DESCRIPTION	
MORNINGCARE	\$9 Pre-registered use \$12 Drop-in use	PK-4th	MorningCare begins Tuesday, September 4, 2018, and is open every day that school is in session, with the exception of Harvest Festivals.	
STAY AND PLAY	\$18 Pre-registered use \$25 Drop-in use	PK only	PreK students who participate in Stay and Play will remain in their classroom for a hot lunch, enjoy a recess time, story time, nap time, and open play. Following lunch, PreK students will transition to a quiet rest time.	
AFTERCARE	AfterCare Block 1 + 2 Pre-registered + Drop-in rates vary	PK-4th	Students in AfterCare are grouped based upon grade level and have age-appropriate scheduled activities in addition to free play. All students receive an afternoon snack. At 4:45 there will be an additional car line dismissal.	
INDEPENDENT MUSIC INSTRUCTION				
GARDEN CLUB*	\$270 9/19, 9/26, 10/3, 10/10, 10/17, 10/24, 10/31, 11/7, 11/14	PK/JK	Garden Club blends science, art, math, and fun into an exploration of nature! Students will learn about sustainability, ecosystems, habitats, and more. Projects will vary each week from building a Bee Habitat to planting milkweed for caterpillars.	
GEORGE'S GYM*	\$240 9/26, 10/3, 10/10, 10/17, 10/24, 10/31, 11/7, 11/14	PK/JK	Each class will consist of a warm-up, jumps, stretching, conditioning, stations for practicing and learning tumbling tricks and we always finish with a super fun game!	
ART EXPLORATIONS*	\$180 9/19, 9/26, 10/3, 10/10, 10/17, 10/24, 10/31, 11/7, 11/14	PK/JK	Exploration in light and reflections in art! Students will create work that explores the nature of light through paints, mobiles and found materials.	
BOLLYWOOD GROOVE				
CODE PLAY LEARN 12:45-1:45	\$270 9/12, 9/19, 9/26, 10/3, 10/10, 10/17, 10/31, 11/7, 11/14	2nd-4th	Using MIT's Scratch programming platform, students will create their own interactive media, including stories, games and animations. During our projects students will learn fundamental coding concepts including loops, decision statements, variables, mathematical operators, Boolean logic, events and more. Each child will become a maker of technology rather than just a consumer of technology. By incorporating interpersonal play with screen time each child develop his or her ability to think creatively, work collaboratively and reason systematically.	
BENNETT BALLERS 12:45-1:45	\$180 9/12, 9/19, 9/26, 10/3, 10/10, 10/17, 10/31, 11/7, 11/14	SK-4th	Each session will feature 2-3 weeks of Basketball, Baseball, Soccer, and Handball. Each week players develop fundamental skills through dynamic games using age appropriate equipment. Small group sizes ensure safety and fun and allows coaches to focus on good sportsmanship and teamwork.	
NEIGHBORHOOD EXPLORER'S CLUB 1:00-3:00	\$270 9/12, 9/19, 9/26, 10/3, 10/10, 10/17, 10/31, 11/7, 11/14	SK-4th	Sign up to venture out into Bennett's surrounding communities of West Town, Fulton Market, and the West Loop! Each week students will explore local businesses, map neighborhood vegetation, write letters to our alderman and more!	
GOLDFISH SWIMMING 1:30-3:30	\$360 9/12, 9/19, 9/26, 10/3, 10/10, 10/17, 10/31, 11/7, 11/14	SK-4th	Bennett Day is partnering with Goldfish Swim School to provide lessons for Bennett students! Students will be accompanied by AfterCare leaders on the Grand Ave bus to Goldfish Swim School. There they will receive a 30 minute swim lesson from the Goldfish Swimming Certified Instructors. All skill levels are welcome! Students must be able to independently change into and out of their swim suit.	
TABLETOP GAME DESIGN	\$270 9/12, 9/19, 9/26, 10/3, 10/10, 10/17, 10/31, 11/7, 11/14	2nd-4th	TableTop Design allows students to study the evolution of board games from Senet and Backgammon to Settlers of Catan and Monopoly. Each week they will play several games learning about genre, board design, game progress, script, and game mechanics. As the trimester progresses students will design their own games, create prototypes, and eventually play them. The class will culminate in a booth at the Chicago Toy & Game Fair.	

*Includes Halfday AfterCare until regular dismissal (2:45), Class runs from 1:30-2:15

All Auxiliary programs can be registered by using [Ultracamp](#).

THURSDAY Trimester 1

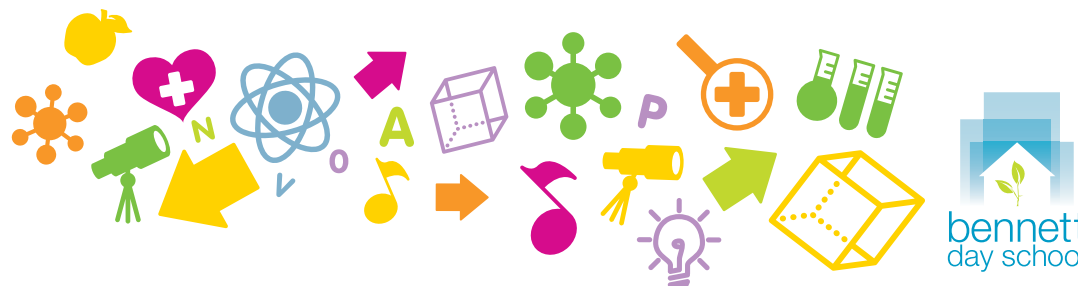
	COST/DATES	AGE	DESCRIPTION	
MORNINGCARE	\$9 Pre-registered use \$12 Drop-in use	PK-4th	MorningCare begins Tuesday, September 4, 2018, and is open every day that school is in session, with the exception of Harvest Festivals.	
STAY AND PLAY	\$18 Pre-registered use \$25 Drop-in use	PK only	PreK students who participate in Stay and Play will remain in their classroom for a hot lunch, enjoy a recess time, story time, nap time, and open play. Following lunch, PreK students will transition to a quiet rest time.	
AFTERCARE	AfterCare Block 1 + 2 Pre-registered + Drop-in rates vary	PK-4th	Students in AfterCare are grouped based upon grade level and have age-appropriate scheduled activities in addition to free play. All students receive an afternoon snack. At 4:45 there will be an additional car line dismissal.	
INDEPENDENT MUSIC INSTRUCTION				
MUSIC & MOVEMENT	\$180 9/20, 9/27, 10/4, 10/11, 10/18, 10/25, 11/1, 11/8, 11/15	PK/JK	Bennett Day School offers Creative Movement classes for PreK and JK students. It's no secret that young children love to move their bodies and this class offers kids the chance to get their ya-ya's out, learning to respond to the infinite moods and qualities of music- all while strengthening fine and gross motor control. Through games, prop-play and guided exploration, kids will discover the expressive possibilities of their bodies and the joys of dancing, shaking, and twirling with their friends at their side.	
ADVENTURES IN LITERACY	\$180 9/20, 9/27, 10/4, 10/11, 10/18, 10/25, 11/1, 11/8, 11/15	PK/JK	Each day we'll bring a Story to life and become a knight, wizard, princess or mermaid (or a creature of your creation)! At the end of the class we will act out our very own tale with our new identities!	
CIRCESTEEM		JK	CircEsteem is coming Bennett Day School! Give your kids the opportunity to "clown around," while developing balance, flexibility and hand-eye coordination. Kids will learn tight wire walking, juggling, plate spinning, acrobatics, and clowning. Circus classes give every child the chance to shine in the center ring, building confidence and allowing students to work as a team.	
COMIC BOOK DESIGN Ms. Weber's Art Room	\$300 9/13, 9/20, 9/27, 10/4, 10/11, 10/18, 10/25, 11/1, 11/8, 11/15	SK-4th	Each week students will embark on an exploration into Comic Book illustration. Students will look at the history of Comics, analyze the characteristics of what makes a Superhero, and will look at the many different variations of Comic book formats and templates that have been created over time. Students will then use these examples to create their own comic strips working with pencil, ink, and marker.	
BENNETT BASEBALL Field/Gym	\$200 9/13, 9/20, 9/27, 10/4, 10/11, 10/18, 10/25, 11/1, 11/8, 11/15	SK-4th	Calling all sluggers! Step up to the plate and work on fundamental baseball skills! All skill levels are welcome to work on base running, fielding, and hitting. Players can track their skill development with Zepp Sports technology over the course of the eight week session.	
STICKY FINGERS Cafeteria	\$300 9/13, 9/20, 9/27, 10/4, 10/11, 10/18, 10/25, 11/1, 11/8, 11/15	SK-4th	Let your child release their inner chef! Students will prepare and eat healthy, international inspired recipes all while learning to cook in a fun, engaging, hands-on and real-world way! Our professional chef instructors will reinforce kitchen skills associated with our weekly recipes and emphasize each area of cooking: From discovering new cooking techniques, using the freshest ingredients, learning fun nutrition facts as we practice proper measurements, while using a wide array of cooking utensils.	
CIRCESTEEM Music Room/Gym	\$300 9/13, 9/20, 9/27, 10/4, 10/11, 10/18, 10/25, 11/1, 11/8, 11/15	SK-4th	CircEsteem is coming Bennett Day School! Give your kids the opportunity to "clown around," while developing balance, flexibility and hand-eye coordination. Kids will learn tight wire walking, juggling, plate spinning, acrobatics, and clowning. Circus classes give every child the chance to shine in the center ring, building confidence and allowing students to work as a team.	

All Auxiliary programs can be registered by using [Ultracamp](#).

FRIDAY Trimester 1

	COST/DATES	AGE	DESCRIPTION
MORNINGCARE	\$9 Pre-registered use \$12 Drop-in use	PK-4th	MorningCare begins Tuesday, September 4, 2018, and is open every day that school is in session, with the exception of Harvest Festivals.
STAY AND PLAY	\$18 Pre-registered use \$25 Drop-in use	PK only	PreK students who participate in Stay and Play will remain in their classroom for a hot lunch, enjoy a recess time, story time, nap time, and open play. Following lunch, PreK students will transition to a quiet rest time.
AFTERCARE	AfterCare Block 1 + 2 Pre-registered + Drop-in rates vary	PK-4th	Students in AfterCare are grouped based upon grade level and have age-appropriate scheduled activities in addition to free play. All students receive an afternoon snack. At 4:45 there will be an additional car line dismissal.
INDEPENDENT MUSIC INSTRUCTION			
SLIMY SCIENCE	\$180 9/20, 9/27, 10/4, 10/11, 10/18, 10/25, 11/1, 11/8, 11/15	PK/JK	Calling all young scientists! In this class we will explore biology, chemistry, and physics in a fun filled, hands-on way. Discover physics laws in an awesome egg drop project, create chemical reactions that fizz and not fizz, and make slime! Lots of fun combined with lots of learning
ART EXPLORATION Outside/Piazza	\$180 9/20, 9/27, 10/4, 10/11, 10/18, 10/25, 11/1, 11/8, 11/15	PK/JK	Let's make a mess! In this nine week program participants will paint, sculpt, draw, and design. Each week they will use a different material to create a masterpiece!
BEGINNING PIANO GROUP	\$300 9/13, 9/20, 9/27, 10/4, 10/11, 10/18, 10/25, 11/1, 11/8, 11/15	1st-3rd	Bennett Day offers individual and group piano lessons to students beginning in SK. Kids will learn instrumental technique, basic theory and sight reading, but that is only half of the journey: BDS' passion for exploration based learning and our mission of advancing creativity mean that lessons will have an additional emphasis on improvisation and student driven composition. Students will also have opportunities throughout the trimester to collaborate with peers on other instruments in small ensembles and share their work with the BDS community.
LET'S PERFORM! Mr. McDermott's classroom	\$300 9/13, 9/20, 9/27, 10/4, 10/11, 10/18, 10/25, 11/1, 11/8, 11/15	1st-2nd	Have your child express their creativity through performing! Regardless of age or ability, students will work together to create a show whether a retelling of a story or writing their own piece as a group. They will learn theater basics while working together a a team to create a short performance for an audience. Suggested that students who sign up for this class are comfortable with the idea of performing a show for a small audience... It's not for everyone and that's okay! (Tackling the idea of being comfortable on stage is a topic that will be explored in the class, however.) Let your star shine in this Bennett & Beyond class!
SLACKLINE/ JUGGLING Outside/Gym	\$200 9/13, 9/20, 9/27, 10/4, 10/11, 10/18, 10/25, 11/1, 11/8, 11/15	SK-4th	Students will learn the basic skills needed to juggle three scarves and three balls, as well as other juggling-type skills such as yo-yo, diabolo, rings, clubs, poi, and balancing. Attention will be paid to coordination, patience, dealing with failure, balance, stamina, focus, and concentration. Beyond a fun and impressive talent to have, juggling has many mental benefits such as: stress relief, increased problem-solving skills, concentration, confidence and releasing endorphins in the brain. Students will also be introduced to beginning slackline skills.

All Auxiliary programs can be registered by using [Ultracamp](#).





REGISTER TODAY!
ULTRACAMP.COM



bennett
day school

AUXILIARY PROGRAMS TRIMESTER ONE

ULTRACAMP.COM