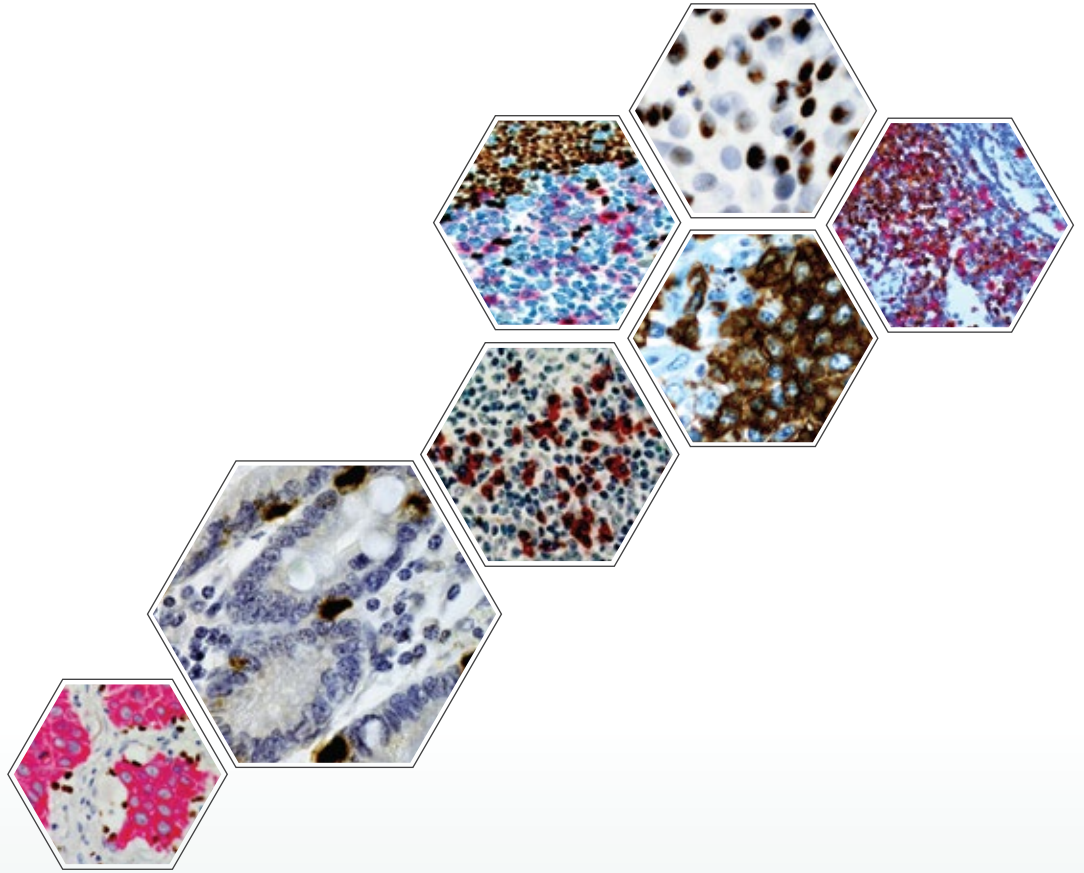


# i6000<sup>TM</sup> ELITE Dx

Walkaway IHC Staining System



**All-In-One - IHC, IF & SS**  
**Clean Crisp Intense Stains**  
**200 Slides in 8 hour Shift**  
**Use your Preferred Antibodies**

# About i6000™ ELITE DX

i6000™ Diagnostics System offers efficient cost effective solution with unsurpassed quality consistency, reliability, high capacity and throughput

## Adaptable, Efficient, Productive and Profitable

- Dispense reagents as low as 100µl
- Adaptable to your work-flow-60 IHC slides in <3 hours
- Predictable cost structure
- High Capacity – 60 slides and 53 antibodies per run
- More productivity per square foot of lab space
  - High throughput – Up to 200 slides in a 8 hrs. shift
  - Start delayed run and return to stained slides next morning

## Flexible System

- Multiple slide processing options - Random, Continuous and STAT
- Multi-format specimen processing
  - FFPE or Frozen tissues
  - Cell preparations, Fine Needle Aspirates, Smears and more...
- Open system allows to use 3<sup>rd</sup> party antibodies

## Easy to Use

- Advanced XYZ robotics with slide carriers and reagent racks allow quick set-up
- Top loading system ensures easy handling and management of slides and reagents
- Color coded GUI with real time assay parameter display for all slides
- Short learning curve allows cross-training and rotation of personnel
- Real time audio and visual alerts

## Reproducible and Reliable Results

- Standardized staining process
- Over 300+ optimized protocols with ready to use reagents in barcoded vials
- Liquid level sensor ensures accurate reagent dispensing
- Disposable pipettes eliminate cross contamination

## Reports and LIS connectivity

- Customized or standard reports for inventory management and regulatory compliance
- LIS connectivity\*
  - Capability to log sample remotely
  - Remote login of sample
  - Report access based on Sample ID or Request ID
- Step-by-step protocol log for every slide
- Run Parameters, reagent expiration dates and specimen used
- Reagent inventory management

\* Optional

# The System



## Removable Reagent Racks (2x30 vials)

- Offers quick and convenient storage of reagent vials
- Enables multiple staining protocols in a single run



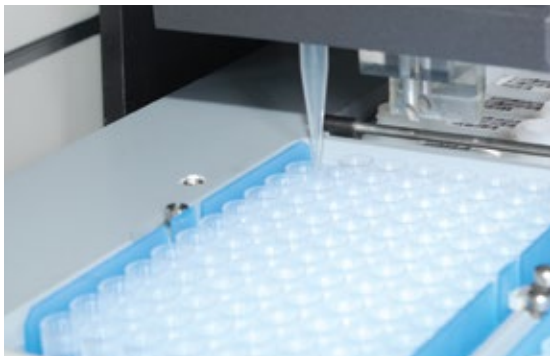
## Bar-coded Slides and Reagent Vials

- Requires minimal hands-on time
- Reduces data entry errors



## Disposable Pipette Tips

- Eliminates cross-contamination of reagents



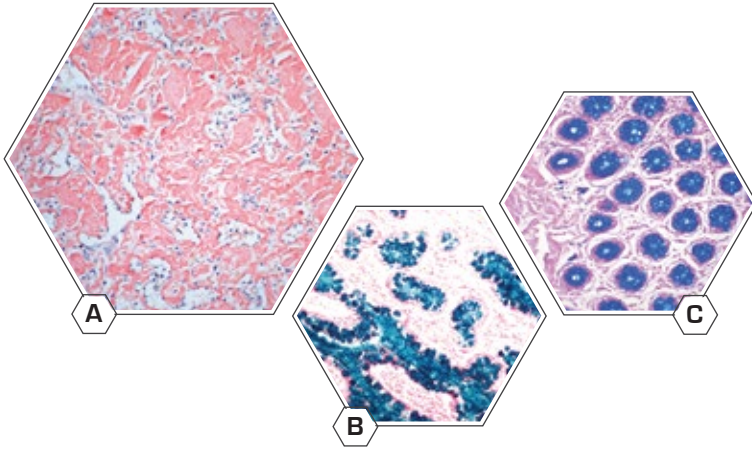
## Removable Slide Racks with Splash Guard (5x12 Slides)

- Provides contamination free staining

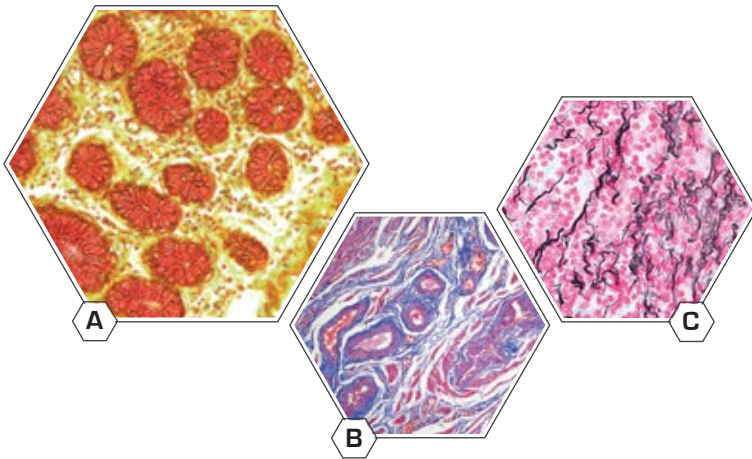


# Manage your resources and work flow efficiently

## Special Stains

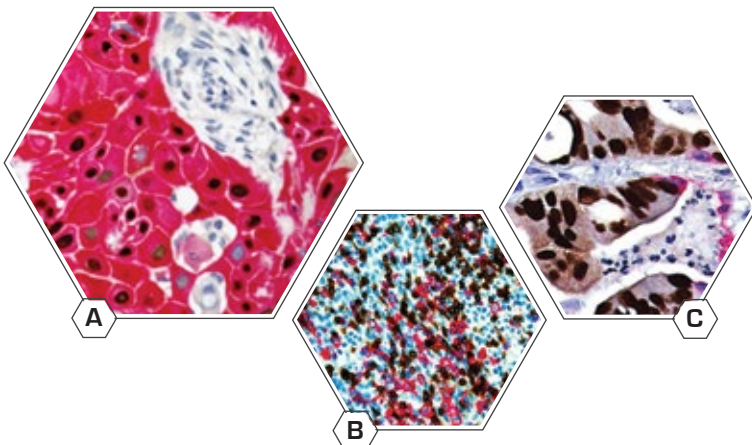


- A. Amyloid [Congo Red] Stain
- B. Colloidal Iron stain
- C. Alcian Blue/PAS Stain



- A. Mucicarmine Stain
- B. Gomori's Trichrome Blue Stain
- C. Reticulin Nuclear Fast Red Stain

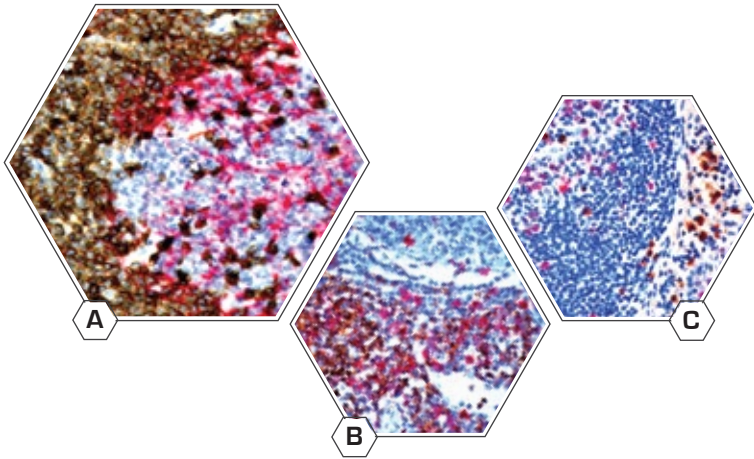
## Multiplex Stains



- A. SCC - Anti-p63 + Anti-CK5
- B. Tonsil - Anti-CD3 + Anti-CD20
- C. Metastatic Carcinoma in Lung  
Anti-CDX2 + Anti-CK7

# Manage your resources and work flow efficiently

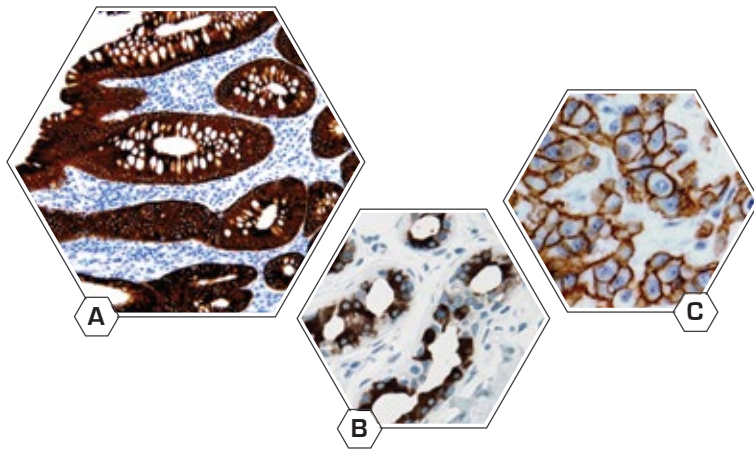
## Multiplex Stains



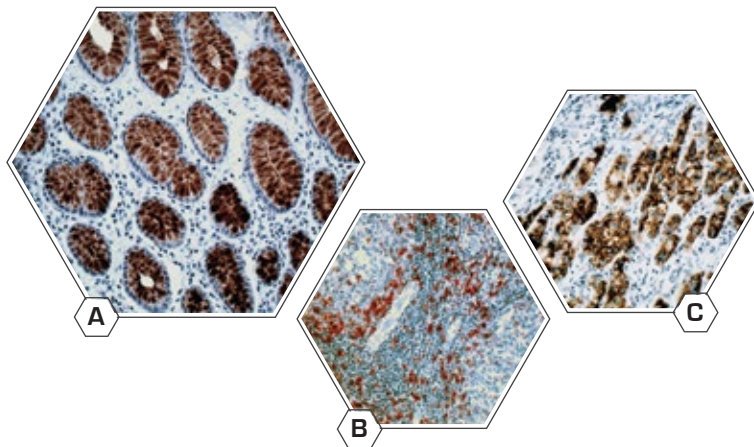
- A. anti-CD5 + anti-CD23
- B. anti-CD4 + anti-CD8
- C. anti-Ki67 + anti-Lambda

---

## IHC



- A. Anti-CK18
- B. Anti-GCDFP-15
- C. Anti-ErbB-2/Her2



- A. MUC5AC in Gastro-intestine
- B. T-Cell in Tonsil
- C. Glypican-3 in Hepatocellular Ca

# Integrated Workflow Solution

## i6000™ ELITE Dx Walkaway IHC Staining System



### ***EZ-Retriever***® System

Pre-treatment and Antigen Retrieval System



### ***i500 Plus***™

LIS Enabled Barcode Label Printer

- The i6000™ is designed to work seamlessly with EZ-Retriever® providing Eco-friendly De-waxing, Rehydration and Antigen Retrieval
- Integrated Digital-data tracking system with i500 Plus™
- Broad range of optimized ready-to-use reagents

#### Ordering Information:

Name	Cat. No.
i6000™ ELITE Dx	AS6030
i6000™ ELITE Dx Software	4812-00093

#### Contact Information:

**USA:** 49026 Milmont Drive, Fremont, CA 94538, USA

**India:** SEZ Unit, Plot No.4, APIIC SEZ for Aerospace & Precision Engineering  
Adibatla, R. R. Dist. - 501510, Telangana State, India

**China:** Unit 511B, 5F Front Hall, Shanghai Exhibition Center  
No.1000 Middle Yan An Road, Shanghai 200041, PRC, China

**Italy:** Via Savoldini, n.73, 24057, Martinengo, Bergamo, Italy

#### Regulatory Claims & Technical Support at: [support@biogenex.com](mailto:support@biogenex.com)

T: +1-800-421-4149  
F: +1-510-824-1490

T: +91-9676777714  
F: +91-40-66529200

T: +86-21-2220-6680  
F: +86-21-2220-6679

T: +39-036-398-6463



[www.biogenex.com](http://www.biogenex.com)

e-mail: [customer.service@biogenex.com](mailto:customer.service@biogenex.com)