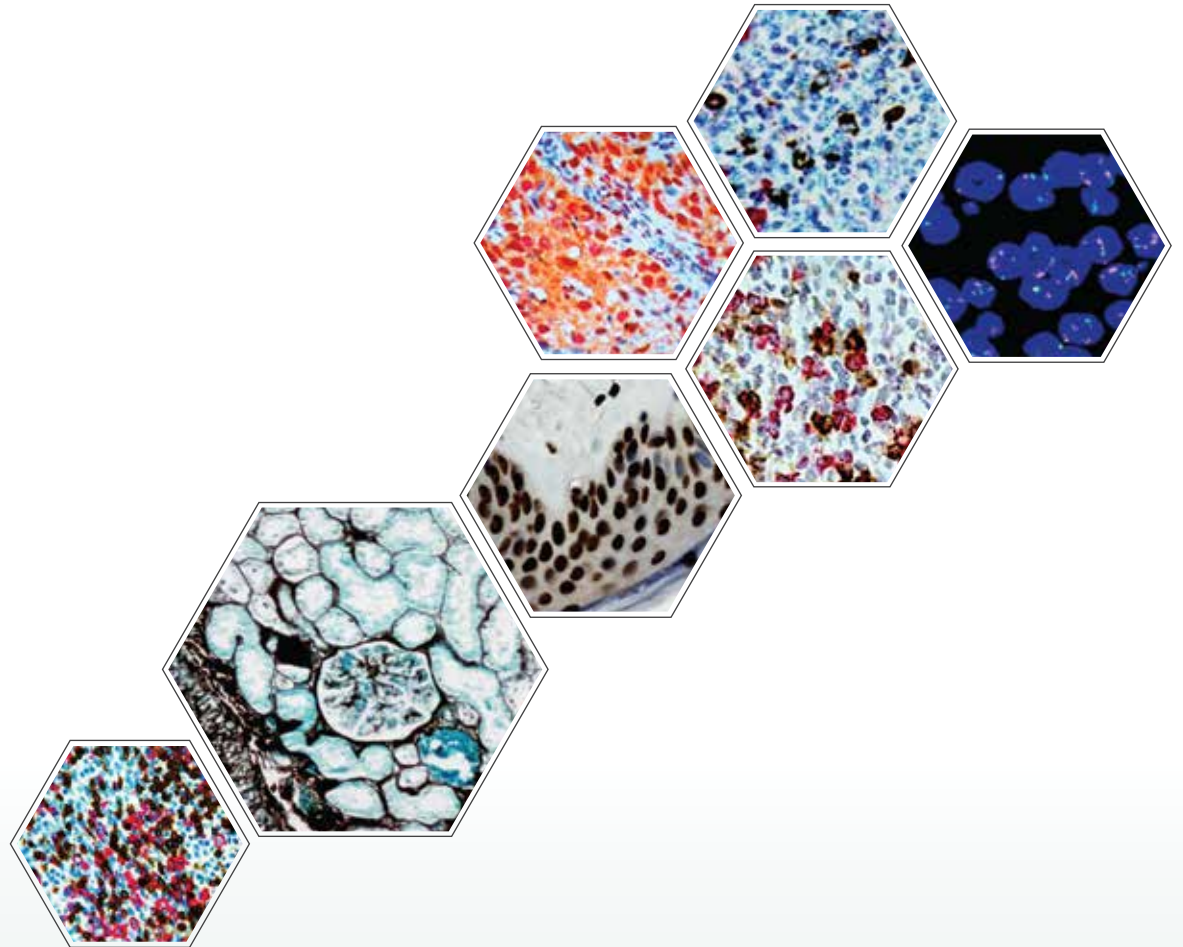


# Xmatrix<sup>®</sup> Infinity

Infinite Possibilities...

...for Translational and Clinical Research



Optimize up to 40 assay parameters in a single run

All-in-One

IHC, IF, SS, ISH, FISH,  
*in situ* PCR, miRNA ISH



## Key Features:

- Xmatrix<sup>®</sup> - a platform technology consisting of fully automated sample processing system, detection kits, antibodies and probes for molecular diagnostics, and translational & clinical research.
- Key technology differentiators are: forty independently controlled thermocyclable (PCR) work stations, a reaction micro-chamber at each position, reagent vials, and bulk-fluidics that enable complete automation of any slide based assays.
  - IHC, IF, SS, ISH, FISH
  - Co-detection and multiplexing of nucleic acid and protein biomarkers
  - *in situ* PCR, miRNA
- Xmatrix<sup>®</sup> Infinity is designed for the life science research, and drug discovery & development. The system adapts and completely automates any manual protocol including denaturation, hybridization, stringency washes, counter stain and final coverslip.
- Multiplexing of ISH and IHC in the same specimen, a hallmark of the system, facilitates co-detection of multiple biomarkers while preserving the tissue morphology and spatial information. The *in situ* quantitative gene-expression profiling enables target identification, prioritization, selection and validation.

# Key Features & Benefits



## Accelerate the pace of discovery...

- Simultaneous optimization of up to forty parameters in a single run
- Co-detection of multiple nucleic acid and protein biomarkers
- Multiplexing of single or multiple specimens on a single slide
- Multi-format specimen analysis : Tissues - Frozen or FFPE, Cell preparations, Smears, Fine Needle Aspirates (FNA) and many more...



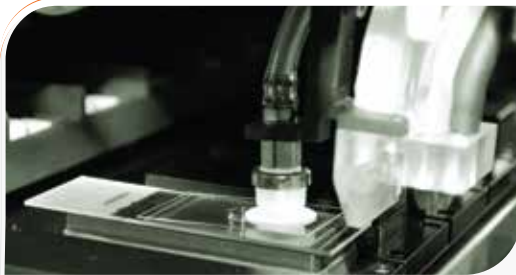
## ...With flexibility and control

- Intuitive software designed for ease of use and flexibility
- Automate any or all steps from baking through final coverslip
- Fully open system, use reagent of your choice
- Adapts and automates any manual slide based assays



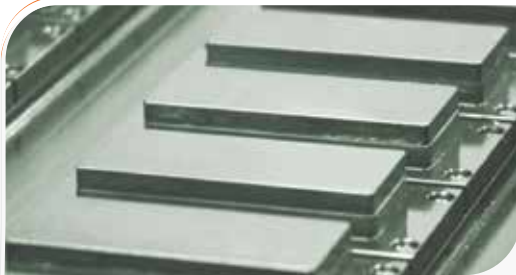
## Ease of Use

- Real-time slide map
- Intelligent bulk fluidics system
- Efficient waste management system
- Reports for inventory management and regulatory compliance



## Reaction microchamber with microfluidics

- Reaction microchamber - 5  $\mu$ L for 18x18 to 8  $\mu$ L for 25x40 slides
- Reduces micro-reagent usage up to 90%
- Even distribution of reagents on the specimen
- Overnight incubation/hybridization without drying of specimen



## eXACT™ Temperature Control and Thermo-cycling

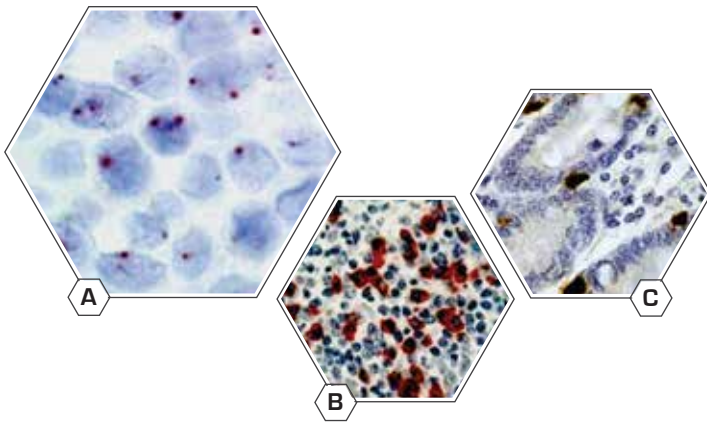
- Forty independently thermocyclable work stations
- Active heating and cooling on each slide - Ambient  $\rightleftharpoons$  95 °C in < 2 min
- Temperature uniformity across entire slide  $\pm$  0.5 °C
- Optimum operating temperature irrespective of the lab conditions
- Temperature range: ambient to 105 °C



## On-board De-hydration and Final Coverslip

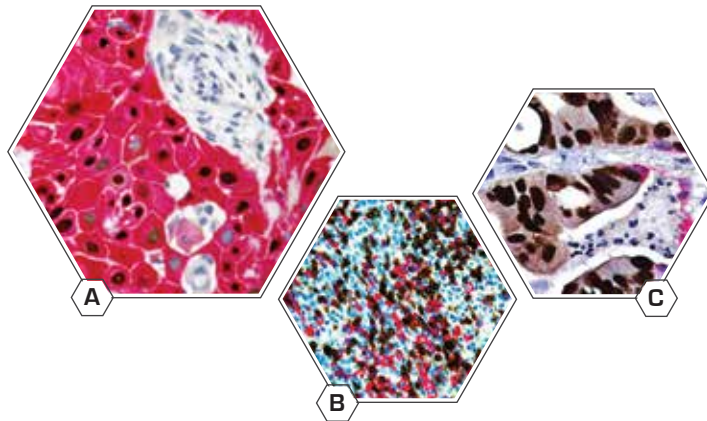
- Eco-friendly (non-xylene) dehydration & clearing
- Permanent mounting and coverslipping
- Curing and cooling

# Infinite Possibilities...for Translational and Clinical Research



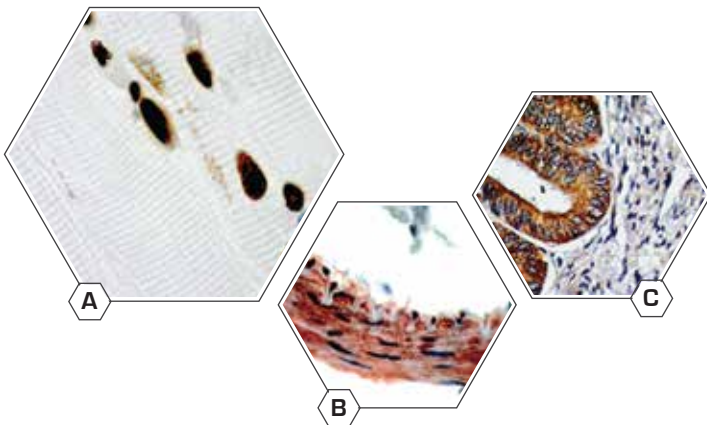
## ISH

- A. HPV Probe
- B. Kappa
- C. Cyclin D1



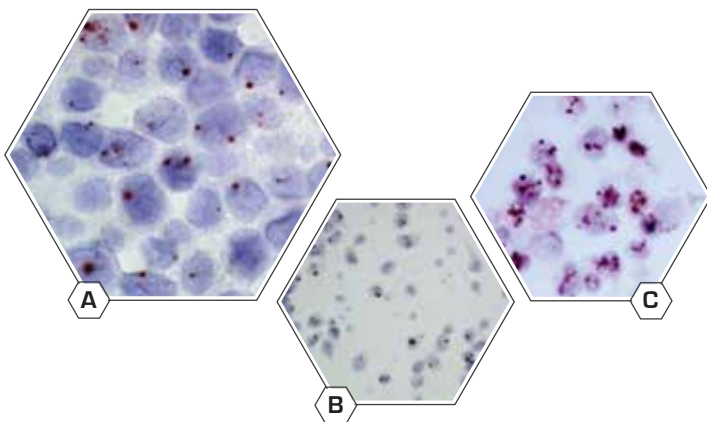
## Multiplex Stains

- A. SCC - Anti-p63 + Anti-CK5
- B. Tonsil - Anti-CD3 + Anti-CD20
- C. Metastatic Carcinoma in Lung  
Anti-CDX2 + Anti-CK7



## Hsa - microRNA

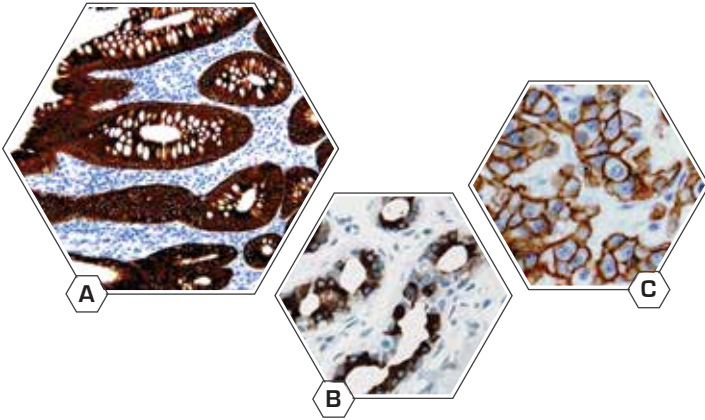
- A. miR-1 Human Skeletal Muscle
- B. miR-145 in Human Small Intestine
- C. miR-222 in Human Cervical Ca.



## Single Copy Gene Detection

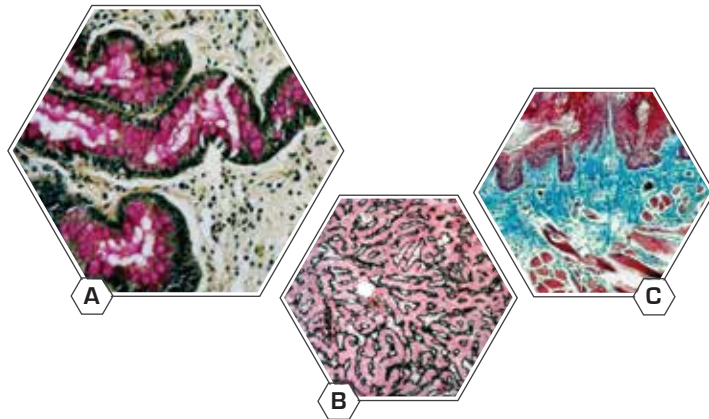
- A. SiHa
- B. HeLa
- C. Caski

# Infinite Possibilities...for Translational and Clinical Research



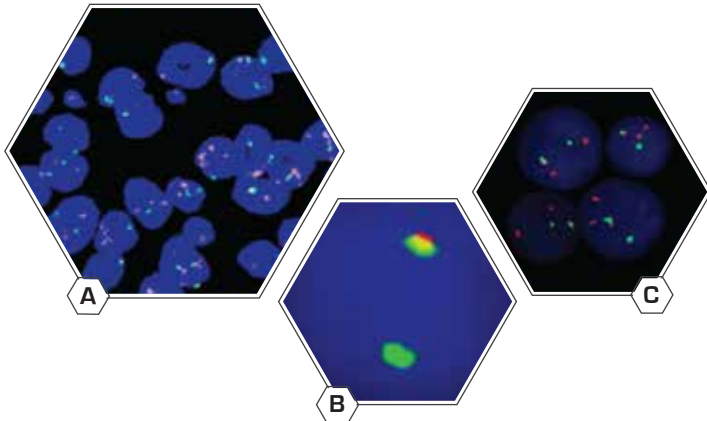
## IHC

- A. Anti-CK18
- B. Anti-GCDFP-15
- C. Anti-ErbB-2/Her2



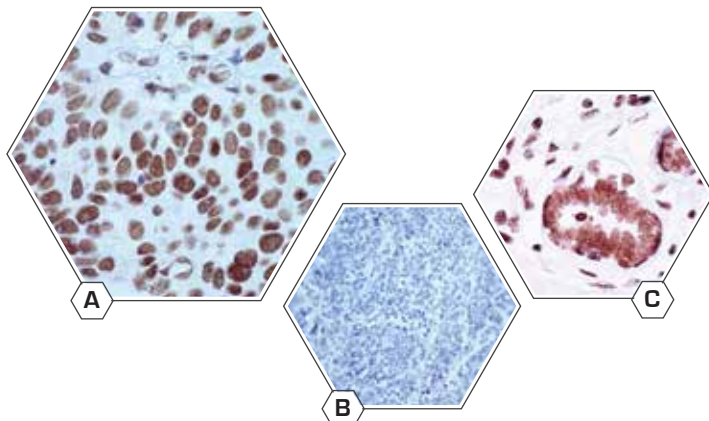
## Special Stains

- A. Mucicarmine in Intestine
- B. Reticulin-Nuclear Fast Red in liver
- C. Masson's Trichrome in Skin



## FISH

- A. FISH EGFR
- B. FISH Break apart ALK
- C. FISH HER2

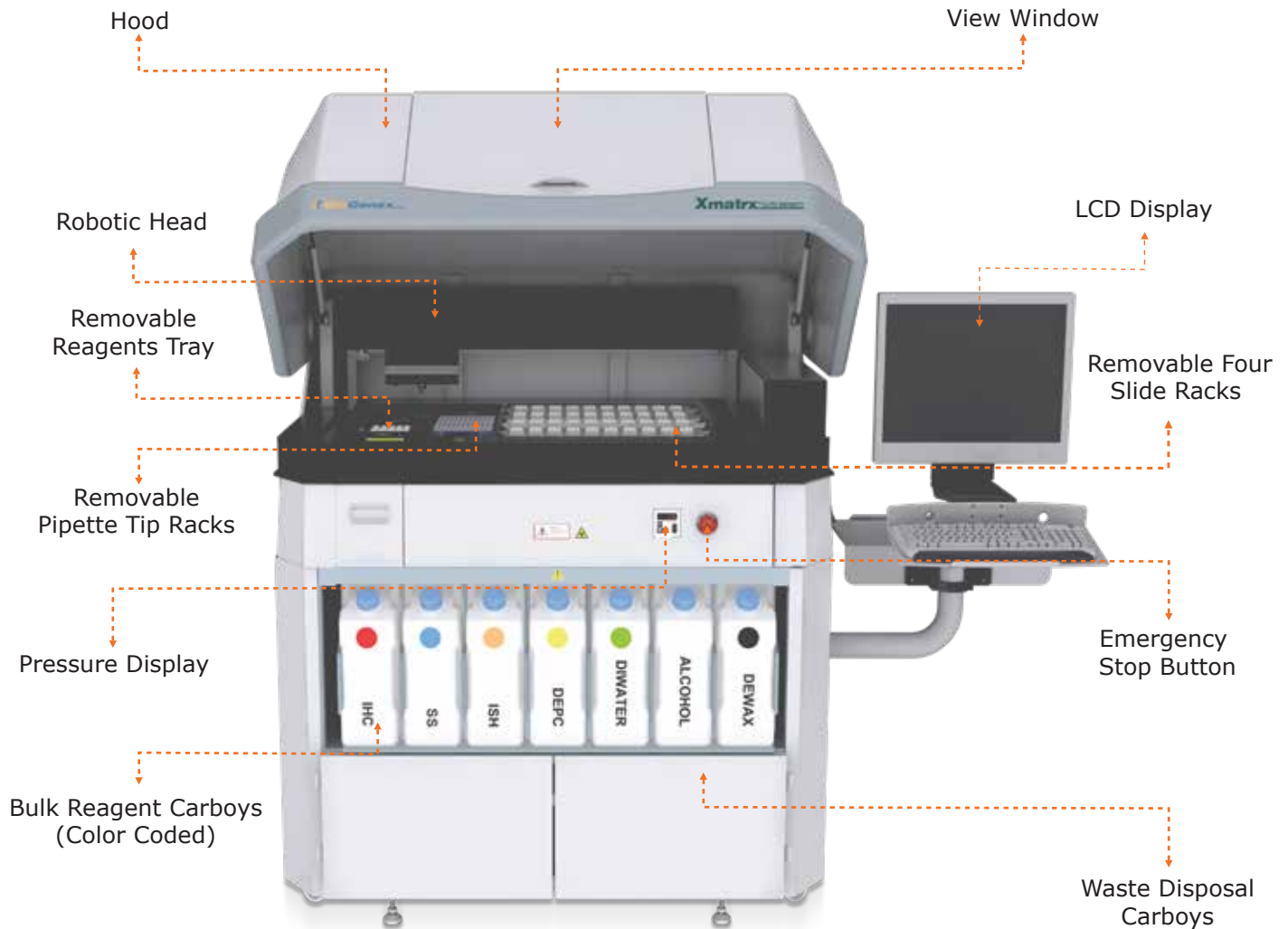


## *in situ* PCR

- A. HPV 16 in situ PCR Ca. Cervix
- B. HPV 16 Negative Control
- C. GAPDH in situ PCR Normal Breast

# Xmatrix<sup>®</sup> Infinity

Infinite Possibilities...  
...for Translational and Clinical Research



## Contact Information:

USA: 49026 Milmont Drive, Fremont, CA 94538, USA

India: APIIC SEZ, Adibatla, R.R.Dist. 501510, Telangana, India

China: Unit 511B, 5F Front Hall, Shanghai Exhibition Center, Shanghai 200041, PRC, China

Customer service - US: [customerservice@biogenex.com](mailto:customerservice@biogenex.com)

Customer service - India: [indiacs@biogenex.com](mailto:indiacs@biogenex.com)

Customer service - Global: [internationalcs@biogenex.com](mailto:internationalcs@biogenex.com)

Instrument support: [instrument.care@biogenex.com](mailto:instrument.care@biogenex.com)

Reagent support: [reagentsupport@biogenex.com](mailto:reagentsupport@biogenex.com)

For US

T: +1-800-421-4149

F: +1-510-824-1490

For India

T: +91-9100032862

T: +91-6309448856

For China

T: +86-21-2220-6680

F: +86-21-2220-6679

For outside US, India, and China

T: +91-7702301043



[www.biogenex.com](http://www.biogenex.com)