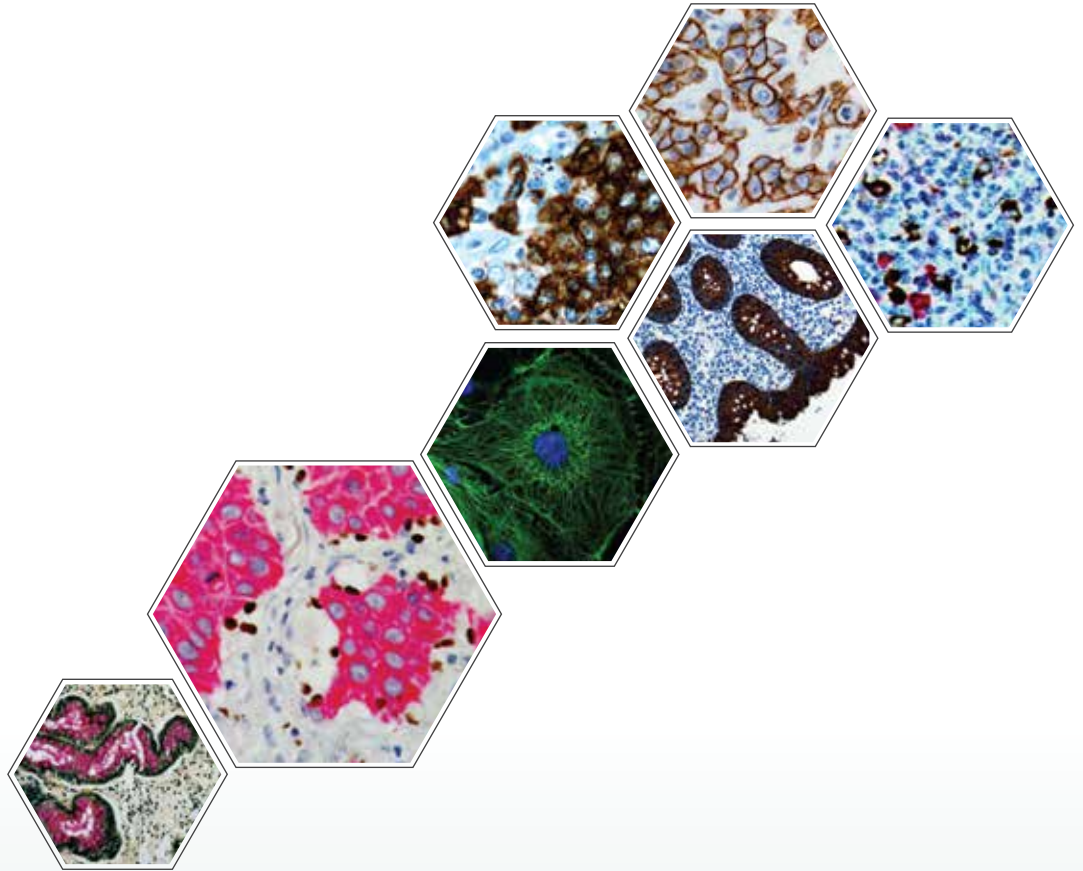


*i*6000TM ELITE Rx

Multifunctional Staining System for Research



Accelerate your research
All-in-One
IHC, IF, Multiplexing & Special Stains

Key Features & Benefits



Accelerate the Pace of Discovery

- High Throughput with a capability of staining 200 slides in 8 hours
- Fully open system to automate any manual protocol
- Multi-functional system performs multiplex IHC, IF and Special Stains
- Multi-format specimen analysis - Frozen, FFPE, Cell Preparations, Smears, and FNAs
- Simultaneous optimization of up to 60 assay parameters
- Unattended overnight run option

Flexible, Safe and Easy to Use

- Pre-optimized ready to use or user defined reagents
- Liquid level sensor for accurate reagent dispensing
- Multiple slide processing options - Random, Continuous and STAT
- Disposable pipette tips - eliminates cross contamination
- Store customized protocols for future use

Open Intuitive Software

- Customize protocols by editing individual slide processing parameters
- Edit and fine-tune pre-defined/stored protocols
- Audio and Visual alerts at every step for manual intervention
- Real-time slide map including time to completion
- Pause the run at any step for manual intervention

Customized Reporting System

- Run Parameters, reagent expiration dates and specimen used
- Reagent inventory management

The System



Liquid Level Sensor

- Ensures adequate reagent in the vials to perform staining
- Eliminate false negatives



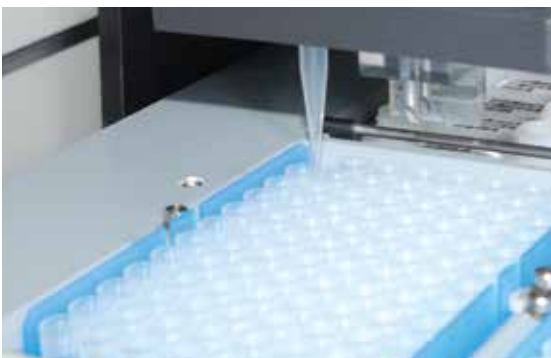
Removable Reagent Racks (2x30 vials)

- Offers quick and convenient storage of reagent vials
- Enables multiple staining protocols to be carried out in a single run



Disposable Pipette Tips

- Eliminates cross-contamination of reagents



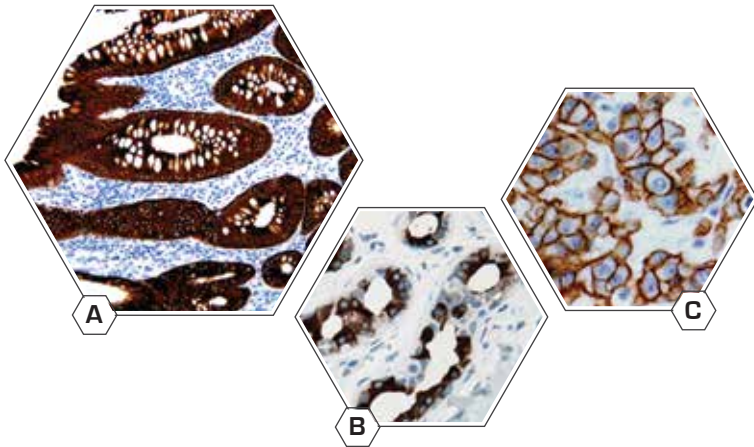
Removable Slide Racks with Splash Guard (5x12 Slides)

- Provides contamination free staining



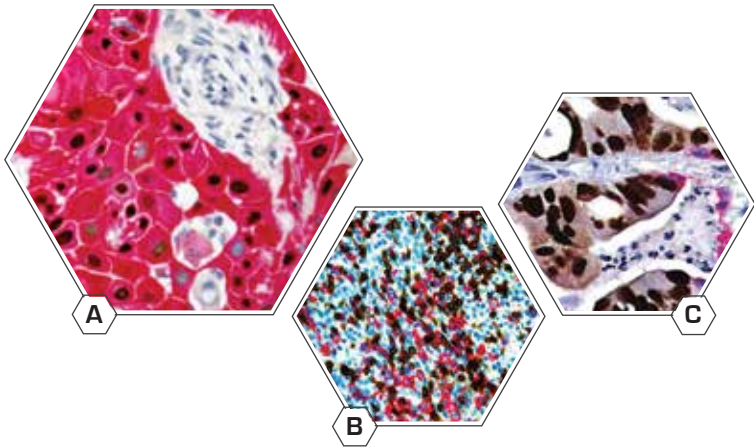
Accelerate your Research with Walk away Multifunctional Staining System

IHC

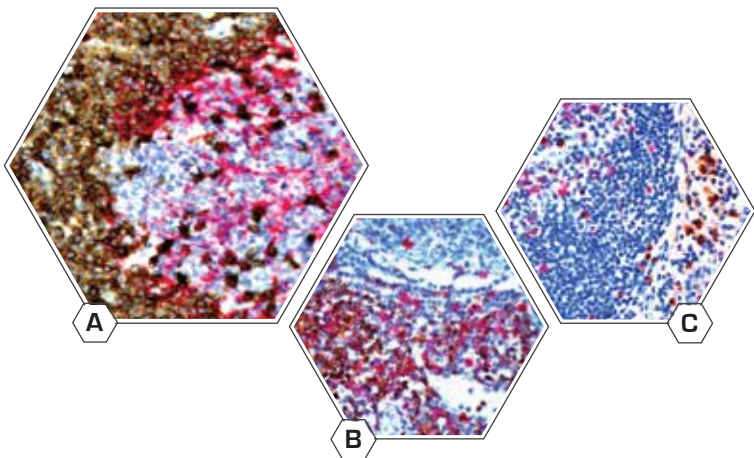


- A. Anti-CK18
- B. Anti-GCDFP-15
- C. Anti-ErbB-2/Her2

Multiplex Stains



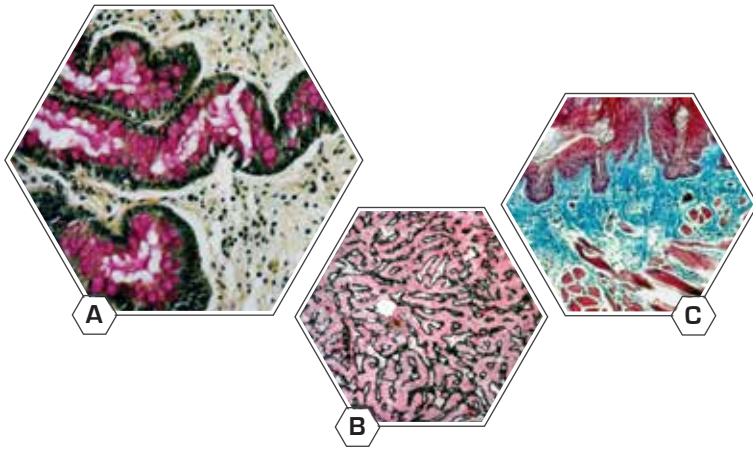
- A. SCC - Anti-p63 + Anti-CK5
- B. Tonsil - Anti-CD3 + Anti-CD20
- C. Metastatic Carcinoma in Lung
Anti-CDX2 + Anti-CK7



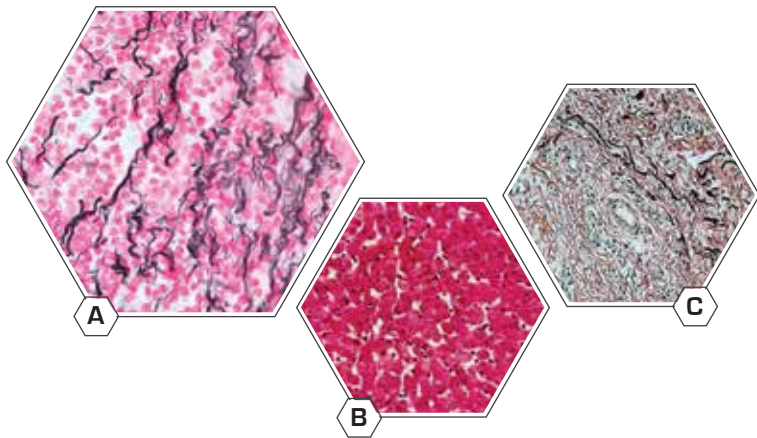
- A. anti-CD5 + anti-CD23
- B. anti-CD4 + anti-CD8
- C. anti-Ki67 + anti-Lambda

Accelerate your Research with Multifunctional Staining System

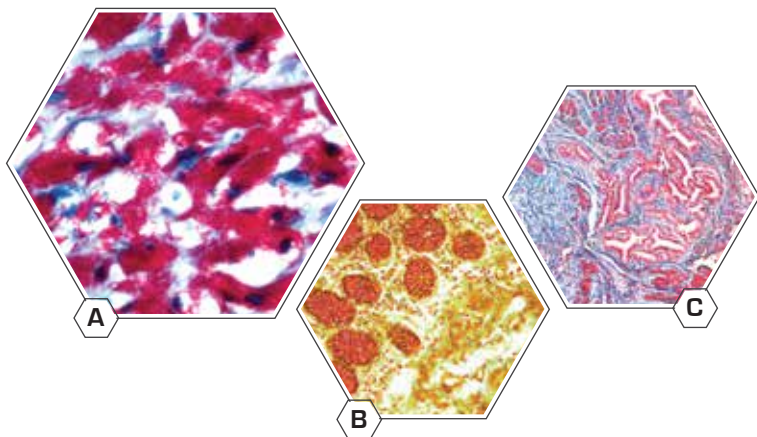
Special Stains



- A. Mucicarmine in Intestine
- B. Reticulin-Nuclear Fast Red in liver
- C. Masson's Trichrome in Skin



- A. Reticulin Nuclear Fast Red Stain
- B. PAS in Liver
- C. Elastic in Skin



- A. Acid-Fast Bacteria (AFB) Blue Stain
- B. Mucicarmine Stain
- C. Gomori's Trichrome Blue Stain

Integrated Workflow Solution

i6000™ ELITE Rx

Multifunctional Staining System for Research



EZ-Retriever® System

Pre-treatment and Antigen Retrieval System

- The i6000™ is designed to work seamlessly with EZ-Retriever providing Eco-friendly De-waxing, Rehydration and Antigen Retrieval
- DeWax, re-hydration and antigen retrieval in one step
- Optimized factory protocols
- User-defined protocols
- High throughput - 96 slides in 35 minutes
- Microwavable containers
- Programmable time and temperature controls
- Built-in probe measures solution temperature in real time
- Time saving and uniform heating
- Eco-friendly solutions

Contact Information:

USA: 49026 Milmont Drive, Fremont, CA 94538, USA

India: APIIC SEZ, Adibatla, R.R.Dist. 501510, Telangana, India

China: Unit 511B, 5F Front Hall, Shanghai Exhibition Center, Shanghai 200041, PRC, China

Customer service - US: customerservice@biogenex.com

Customer service - India: indiacs@biogenex.com

Customer service - Global: internationalcs@biogenex.com

Instrument support: instrument.care@biogenex.com

Reagent support: reagentsupport@biogenex.com

For US

T: +1-800-421-4149

F: +1-510-824-1490

For India

T: +91-9100032862

T: +91-6309448856

For China

T: +86-21-2220-6680

F: +86-21-2220-6679

For outside US, India, and China

T: +91-7702301043



www.biogenex.com