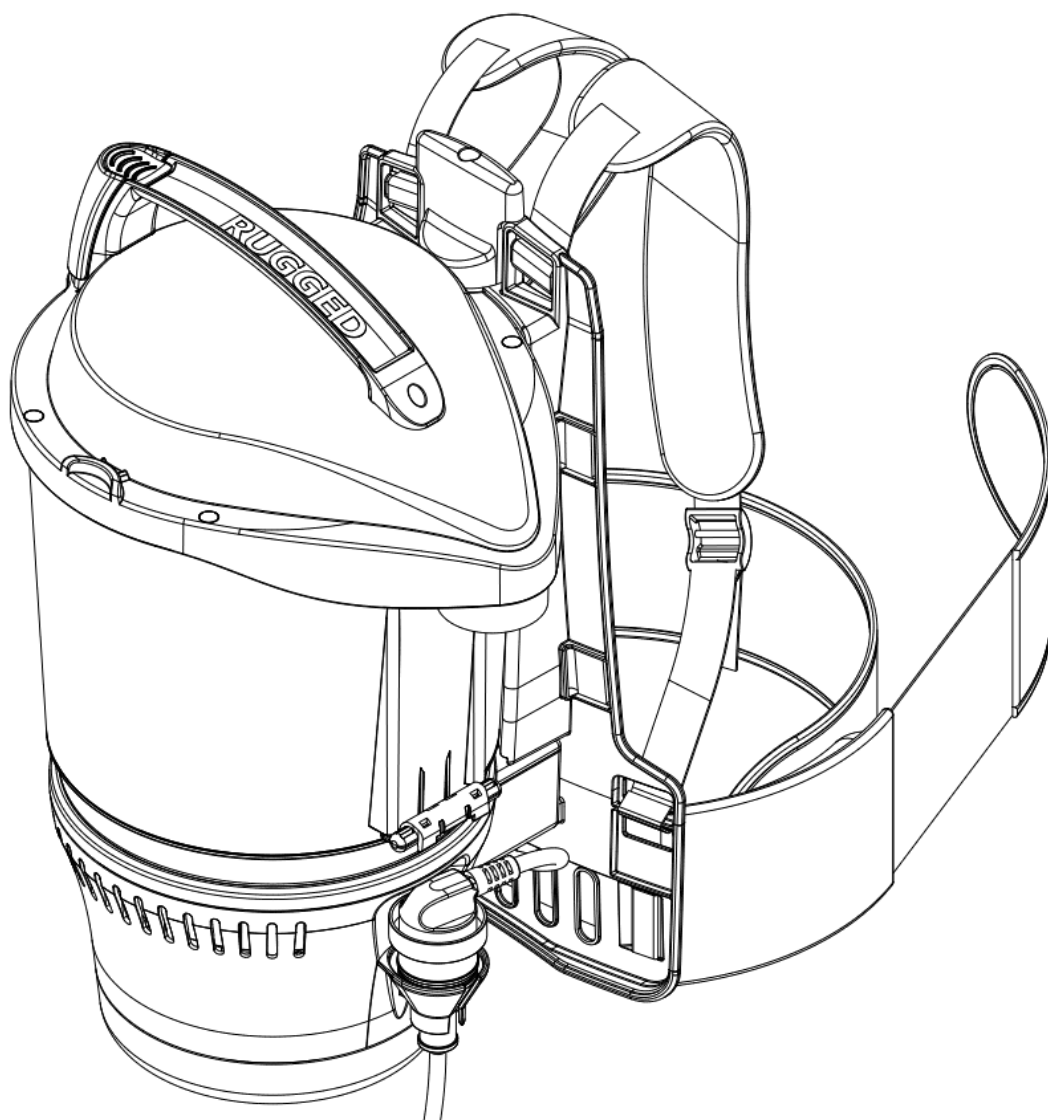


ADVANTAGE Cyclone Back Pack Vacuum Cleaner

OWNER'S MANUAL

ADVANTAGE MODEL 15721000

PLEASE READ THIS MANUAL BEFORE OPERATING



Exclusively Distributed:

Australia / New Zealand
Hako Australia Pty Ltd
90 Wetherill St N,
Silverwater NSW 2128
Australia

Enquiries:

Email: hksales@hakoaustralia.com.au
Toll Free: 1800 257 221 (only within Australia)
P: +61 2 8765 4700
F: +61 2 8765 4799
Website: www.hakoaustralia.com.au

**The vacuum
you can
depend on**

WELCOME TO THE ADVANTAGE CYCLONE VACUUM CLEANER

Discover the benefits of the Advantage cyclone technology, and surprise yourself with the amount of dirt you will vacuum the first time you use it. This is the dirt your previous vacuum left behind.

Health and hygiene is important to us. The Advantage provides clean healthy exhaust air using antimicrobial agents in the vacuum hose, tank and motor filter, which eliminates odour causing bacteria, fungus and other microorganisms.

The long life vacuum motor, strong construction and quality manufacture, provides you with a, tough commercial vacuum cleaner.

KEY FEATURES

- Very powerful
- 4 stage filtration
- No bags ... just empty the bin
- Improves the working environment, does not use expensive filters.
- Reliability you can depend on

HOW THE TECHNOLOGY WORKS

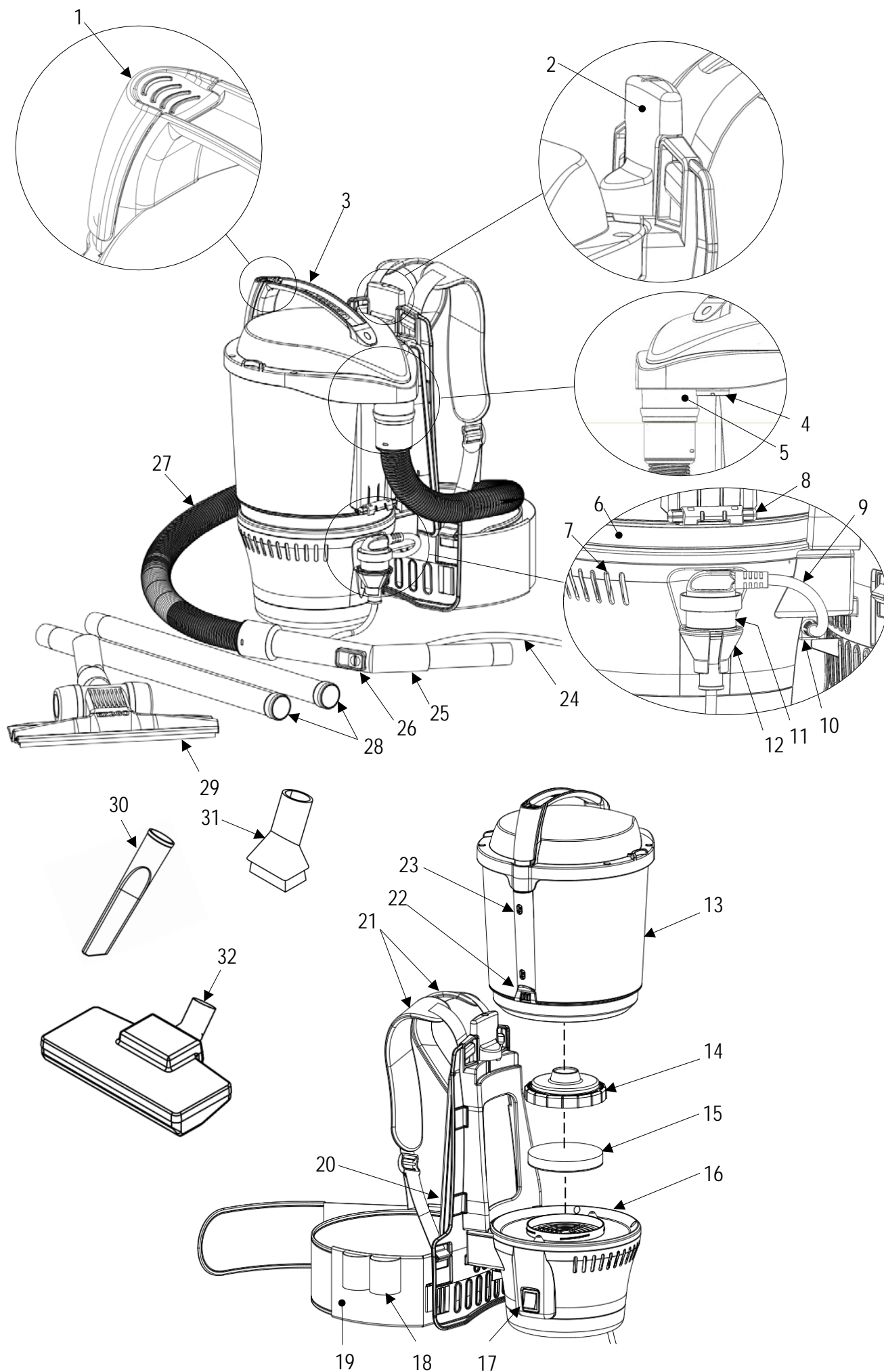
Unlike ordinary vacuum cleaners the Advantage does not use a bag or cartridge filter. Instead, filtration is provided by the 3TDC (3 Tier Dual Core) cyclones which separate dust from air centrifugally. Large objects are filtered into the clear dust bin and retained by a mesh separator. Smaller cyclones then progressively filter finer dust into the internal bin. Finally the washable Motor Filter infused with antimicrobial odour control agents, captures and eradicates microbes in its structure providing an added level of filtration protection. Emptying the bin is simple; with the push of a button dispose of the dust into a rubbish bin or a disposable bag.

TABLE OF CONTENTS

1	GUIDE TO YOUR MACHINE	10	CLEANING LID BIN, & FILTER MESH
2	SAFETY INSTRUCTIONS	11	EXPLODED DIAGRAM
3	ASSEMBLING YOUR MACHINE	12	PARTS LIST
4	PRE-USE CHECKS	13	WIRING DIAGRAM
5	TAKING ADVANTAGE	14	TROUBLE SHOOTING
6	IMPORTANT INFORMATION	15	SPECIFICATIONS
7	WEARING AND ADJUSTING	16	ADVANTAGE WARRANTY
8	EMPTYING & RETURNING THE BIN	17	WARRANTY REGISTRATION DETAILS
9	CLEANING FILTER MOTOR		

1. GUIDE TO YOUR MACHINE

- | | | | |
|----|---------------------------|----|--------------------------|
| 1 | Button Bin Release | 17 | Switch ON/OFF |
| 2 | Lever Lock | 18 | Tool Holder |
| 3 | Handle | 19 | Pad Waist |
| 4 | Valve Poppet | 20 | Pad Back |
| 5 | Inlet | 21 | Pad Shoulder |
| 6 | Lid Bin | 22 | Lid Bin Catch |
| 7 | Exhaust | 23 | Lever Bin Release |
| 8 | Hinge | 24 | Cord Extension |
| 9 | Cord Coupling | 25 | Bent End Piece |
| 10 | Power Inlet | 26 | Suction Regulator |
| 11 | Socket Extension Cord | 27 | Hose Assembly |
| 12 | Cord Restraint Strainless | 28 | Wands |
| 13 | Tank Assembly | 29 | Floor Tool |
| 14 | Cover Filter | 30 | Crevice Tool (Optional) |
| 15 | Filter Motor | 31 | Dusting Brush (Optional) |
| 16 | Housing Motor Assembly | 32 | Turbine Brush (Optional) |



2 SAFETY INSTRUCTIONS

Read this manual and follow the instructions before using the Advantage back pack

- This appliance is not intended for use by persons (including children) with reduced physical, sensory or mental capabilities, or lack of experience and knowledge, unless they have been given supervision or instruction concerning use of the appliance by a person responsible for their safety.
- *(Europe) This appliance can be used by children aged from 8 years and above and persons with reduced physical, sensory or mental capabilities or lack of experience and knowledge if they have been given supervision or instruction concerning use of the appliance in a safe way and understand the hazards involved.*
- *(Europe) Cleaning and user maintenance shall not be made by children without supervision*
- Children should be supervised to ensure that they do not play with the appliance.
- Do not leave unattended when it is plugged into the electricity supply
- Do not unplug with wet hands. Do not pull on cord to unplug. Do not pull or carry by cord
- Switch OFF and unplug from electricity supply when not in use and before cleaning or servicing.
- Do not use outdoors. Do not leave in the sun. Do not use to pick up water.
- This machine shall be stored indoors only
- Ensure that cord is not jammed or trapped during vacuuming. Extend the cord completely but do not stretch or tug on the cord.
- Keep cord away from heated surfaces
- Use only with approved extension cord
- Do not put any objects into openings. Do not use with any openings blocked; keep free of dust, lint, hair and anything that reduces airflow.
- Do not use with Tank Assembly detached from Motor Housing Assembly, or without filters in place.
- Do not use to pick up flammable, combustible, explosive, toxic or dangerous substances, or use in areas where they may be present.
- Do not vacuum anything that is burning such as cigarettes, matches or hot ash
- If the appliance is not working, has been dropped, damaged, left outdoors, or dropped into water, return it to an authorized service centre
- Use only with Rugged Industries recommended parts and attachments
- This machine is intended for commercial use, for example in hotels, schools, hospitals, factories, shops, offices and rental businesses

SAVE THESE INSTRUCTIONS

3 ASSEMBLING YOUR MACHINE

- 1 As standard you will receive 2 x stainless steel metal wands, 1 x Hose Assembly, 1 x EZ2GO wet and dry floor tool
- 2 The machine is configured for right handed operators. You can change to left handed configuration by turning the tank assembly 180°. Release the Tank Lock at the top of the machine to change configuration or to remove the tank.
- 3 Insert Hose Assembly to Inlet bayonet and turn anticlockwise to secure bayonet fitting
- 4 Connect the 2 wands together to create one length.
- 5 Connect wand to the Bent End Piece.
- 6 Connect the EZ2GO™ floor tool to the wand

4 PRE-USE CHECKS

- 1 Test Poppet Valve by blocking the Hose Inlet and listening for a change in the machine sound. This is the point where the Poppet Valve is activated.
- 2 Empty and clean the tank bin when full. Check the motor filter for cleanliness when emptying the tank bin.
- 3 Ensure the bin catch is engaged onto the tank
- 4 Check that cord and plug are in good condition
- 5 Plug into a suitable electrical socket and switch power ON at the power point

The Advantage vacuum cleaner is now ready to use.

5 TAKING ADVANTAGE

- 1 The EZ2GO™ floor tool has been designed for both hard and soft floors. Its low profile allows easy access to low recesses, under desks, tables, chairs and furniture. The swivel neck tool automatically adjusts to the user's height. The rear rubber tyres reduces noise on hard floors, and with four wheels down it is EZ2GO™.
- 2 For vacuuming curtains, soft furnishings, or loose fabric, adjust the Suction Regulator by sliding to the desired level.
- 3 The Advantage cyclone is fitted with a Poppet Valve to relieve over suction and to maintain air flow for filtration, in the event of blockage, or by not emptying the bin, or by not cleaning filters. When activated there will be change in machine sound. To prevent reoccurrence clear the blockage or empty the bin.
- 4 When rubbish reaches the Max level, empty the bin.
- 5 If liquid is accidentally vacuumed, empty and clean the bin and as described in point 8 and point 10 in this procedure
- 6 The Advantage is equipped with tool holders on the Waist Pad for convenience when on the go.
- 7 Optional Extras
 - a) For ease of use and to improve housekeeping tasks we have the following attachments available Crevice Tool, Dusting Brush, and Turbine Brush.
 - b) The Crevice Tool is used for crevice cleaning on upholstered furniture or spot cleaning
 - c) The adjustable Dusting Brush Tool is used for upholstery, corners, blinds, desk tops and cornices cleaning
 - d) The Turbine Brush is used for large areas, or when improved productivity and efficiency are required e.g. carpet cleaning

6 IMPORTANT INFORMATION

1. Fine dust such as powders, chalk dust can only be vacuumed in small amounts. The Advantage is not intended for industrial use such as automotive workshops, warehouse, construction or factories.
2. Do not vacuum sharp hard objects such as glass, gravel, screws, pins, metal objects etc
3. When vacuuming certain carpets, static electricity may develop in the bin. These are harmless and are not associated with the mains power.
4. The Advantage is fitted with a Poppet Valve to maintain airflow in event of blockages. In the event of blockage, turn the power OFF, clear the blockage before using again. Check parts such as Floor Tool, Bent Elbow, Hose and Vacuum Inlet, clear the blockage before turning the power ON. Ensure Filter Mesh and Filter Motor are clean.
5. Do not vacuum plastic bags or large paper objects these block the Mesh Filter and reduce filtration performance.
6. Clean the Mesh Filter of lint, fluff and dust using a paper towel, dry cloth or duster.
7. Empty the bin as soon as dirt reaches the Max mark. DO NOT OVER FILL.
8. To minimise dust contact when emptying, encase the clear bin in a plastic bag and empty, remove the bin carefully when done.
9. Wash the Antimicrobial Filter regularly. The maintenance on this filter varies according to the material surface vacuumed and level of soiling. It is important to check the cleaner regularly and wash at least weekly.
10. Do not immerse the whole tank assembly in water or pour water into cyclones
11. Do not hose down internal parts of the machine
12. Do not use detergents, cleaning agents, polish, for cleaning or on any part of the Advantage vacuum cleaner.
13. Transport the Advantage in the upright position only.

7 WEARING AND ADJUSTING



1. Loosen both Shoulder Pads



2 Lift Advantage onto Shoulder sliding one arm through the shoulder harness. Slide other arm through the second shoulder harness



3. Tighten Shoulder Pad to suit your personal comfort



4. Secure Waist Pad around waist to suit your personal comfort.



5 Wear the Advantage as illustrated

8 EMPTYING & RETURNING THE BIN.



1. Uncouple the Hose



2. Place slight downward pressure with one hand on the Handle then release the tank by turning the tank lock 180° with the other hand.



3. Press release button to disengage the Bin Lid to empty into a waste bin



4. Ensure seals indicated are clean and free of fibre, hair and large debris

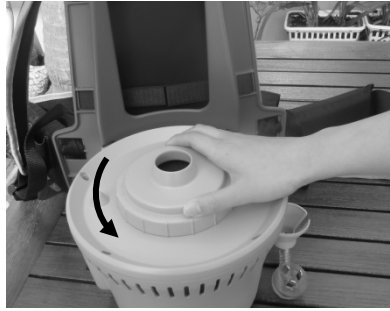


5 Re-engage the Bin Lid Catch to Tank Assembly by gently pressing down on handle with Bin Lid flat on floor

9 CLEANING THE FILTER MOTOR ANTIMICROBIAL



1 Remove the Tank Assembly



2 Remove Cover Filter



3. Remove the Motor Filter.



4 Rinse Motor Filter under a tap thoroughly.



24 h Drying
Time

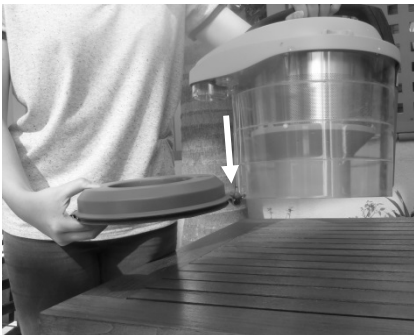
5 **Press Dry Filter.** by hand and then allow another 24h to thoroughly air dry or use a second interchange clean dry filter..
Do Not Wring Dry. This damages the Filter.



6 Only when dry reinsert the filter with white backing, facing the motor.

10 CLEANING LID BIN, AND FILTER MESH

Cleaning the Mesh Filter is when fibre lodges in the mesh holes and Bin Lid is only when water is accidentally vacuumed with dust at the same time.

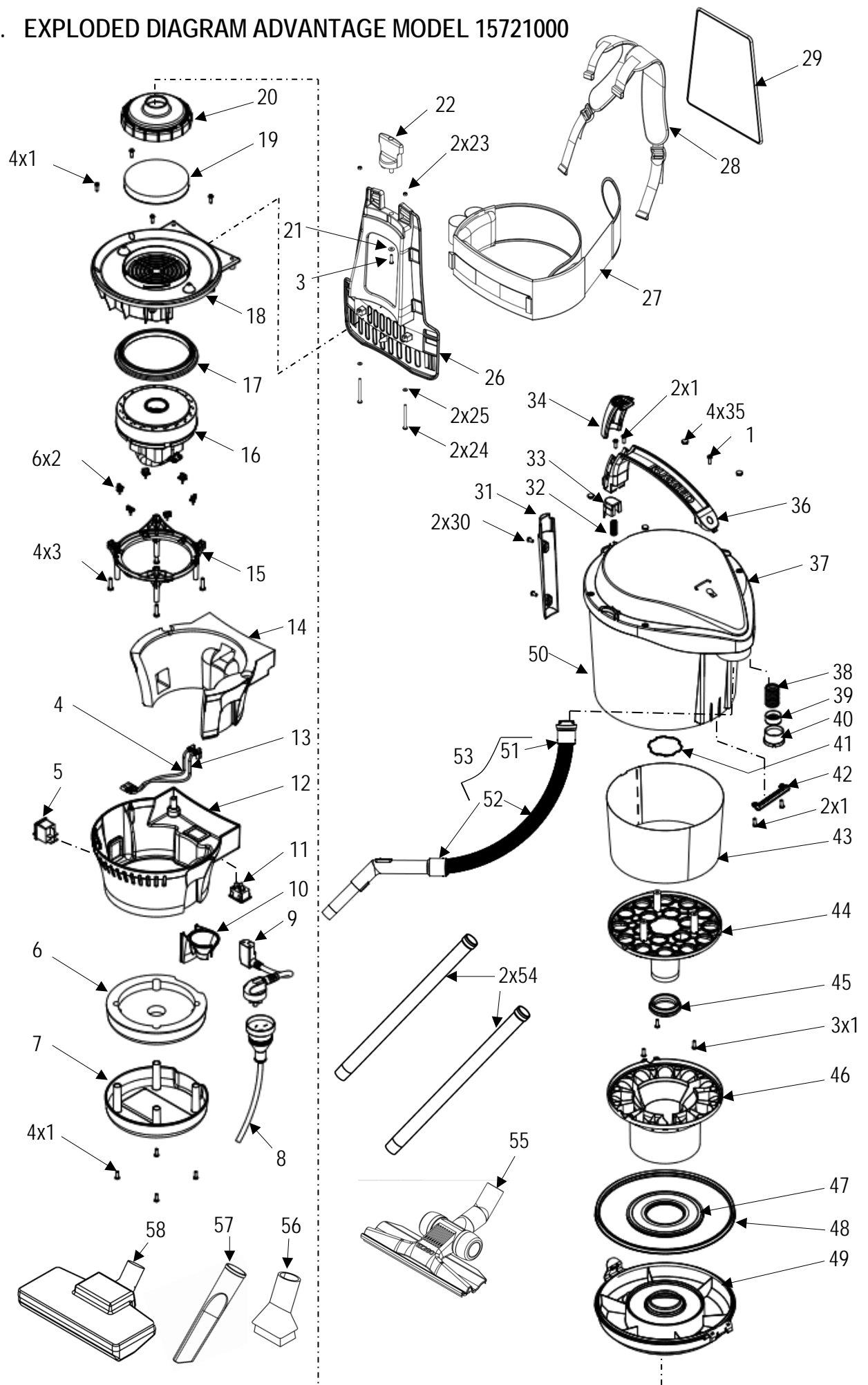


1. Remove Bin Lid at the hinge at the tank as shown. Flush the Bin Lid under a tap to clean. Then dry with a cloth towel.



2 Using a dry cloth, paper towel or micro-dusting brush wipe mesh filter face clean. **Do Not Hose Out Internal Parts Of The Machine**

11. EXPLODED DIAGRAM ADVANTAGE MODEL 15721000



12 PARTS LIST ADVANTAGE MODEL 15721000

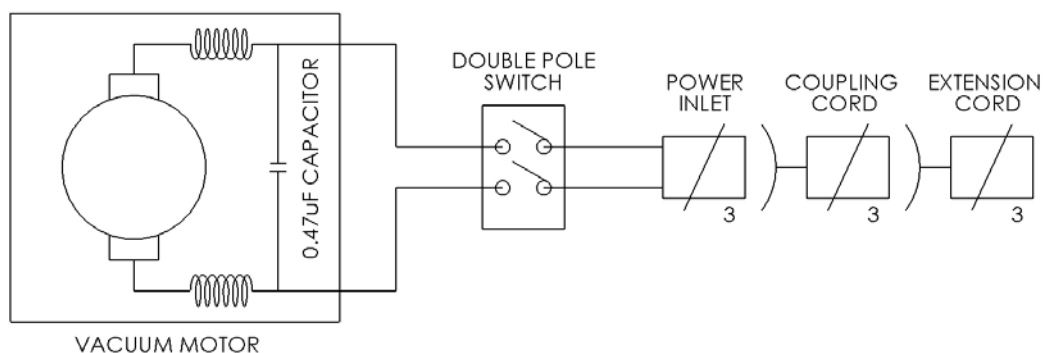
Item	Part No.	Description	Qty
1	16018004	Screw WN1412 KB40 x 12-Z	34
2	16015006	Pad Motor Clamp	6
3	16018007	Screw WN1412 KB50 x 20-Z	5
4	16022002	Wire Blue 180L	1
5	16018018	Switch Rocker	1
6	16008000	Insulation Base 2pc set	1
7	16002002	Cap Motor	1
8	16002004	Cord Extension 18m	1
9	16002003	Cord Coupling	1
10	16002006	Cord Restraint Strainless	1
11	16018017	Socket Inlet	1
12	16007002	Housing Motor	1
13	16022001	Wire Brown 160L	1
14	16008001	Insulation Side & Back 4pc set	1
15	16002005	Clamp Motor	1
16	16012002	Motor Vac 900W	1
17	16018012	Seal Top Motor	1
18	16015001	Plate Motor Mounting	1
19	16005002	Filter Motor Antimicrobial	1
20	16002001	Cover Filter	1
21	16022003	Washer 3/16 x 1/2	1
22	16011002	Lever Lock	1
23	16013001	Nut M5	2
24	16018016	Screw M5 x 60	2
25	16022004	Washer M5	2
26	16005004	Frame	1
27	16015004	Pad Waist	1
28	16015003	Pad Shoulder L & R 4pc set	1
29	16015002	Pad Back	1
30	16018005	Screw WN1412 KB40 x 8 BZ	2

Item	Part No.	Description	Qty
31	16011000	Lever Bin Release	1
32	16018010	Spring Bin Release	1
33	16017000	Retainer Button Spring	1
34	16001005	Button Bin Release	1
35	16002008	Cap Screw	4
36	16007000	Handle	1
37	16002000	Cover Top	1
38	16018009	Spring Poppet Valve	1
39	16021000	Valve Poppet	1
40	16021001	Valve Poppet Inlet	1
41	16014002	O'Ring Bin Inner	1
42	16007001	Hinge Tank	1
43	16005000	Filter Mesh	1
44	16001003	Bin Inner	1
45	16006001	Gasket Filter	1
46	16001004	Bin Outer	1
47	16018003	Seal Bin	1
48	16018002	Seal Tank	1
49	16011001	Lid Bin	1
50	16018000	Shell Tank	1
51	16007005	Hose Connect & 75Seal	1
52	16007003	Hose BEP AM Assy	1
53	16707000	Hose BEP Connector AM Assy	1
54	16022005	Wand 32 x 500L S/S	2
55	16019004	Tool Floor EZ2GO	1

Optional Accessories

56	16019003	Tool Dusting Brush	1
57	16019002	Tool Crevice	1
58	16019005	Tool Turbine Brush	1
59	16005003	Filter Motor Antimicrobial 5/Pkt	1

13 WIRING DIAGRAM



14 TROUBLE SHOOTING GUIDE

Problem	Possible Cause	Solution
Machine does not operate	<ul style="list-style-type: none"> • Not plugged into power point • No power at the power point • Machine switch or power switch OFF • Faulty Cord or Coupling Cord • Faulty Switch or Motor 	<ul style="list-style-type: none"> • Plug into Power socket • Move to a functional power point. • Turn switch ON • Replace Cord • Contact Service Centre
Loss of Suction	<ul style="list-style-type: none"> • Blockage • Suction Regulator open • Bin Full • Filter Motor Blocked • Poppet Valve loose 	<ul style="list-style-type: none"> • Check for blockage and clear • Close Suction Regulator • Empty Bin • Clean Filter • Tighten Poppet Valve

15 SPECIFICATIONS ADVANTAGE MODEL 15721000

Physical

Capacity (l)	5
Gross Package Weight (kg)	7.5
Carry Weight (kg)	5.0
Noise (dB _A)	74
Cord Length (m)	18
Hose Length (m)	1.2
Reach Length (m)	20.5
Accessory Dimension (mm)	32
Wand (mm) 2 pc Stainless Steel	2 x 500
Floor Tool (mm wide) EZ2GO	285

Filtration

Primary	3 TDC cyclone
Motor Filter	Antimicrobial
Re-emission (mg/m ³)	< 0.08
Efficacy	99.9% CFU 24h

Bacteria: *Escherichia Coli*, *Klebsiella Pneumoniae*,
Staphylococcus Aureus, *Pseudomonas Aeruginosa*,
Corynebacterium Ammoniaenes

Moulds: *Aspergillus Niger*,
Tricophyton, *Mentagrophytes*

Machine

Power (w)	900
Suction (kPa)	25
Voltage (V a.c.)	220 - 240
Compliance	RCM
Class	2
Type	Dry

Motor

Type	Flow Thru
Air Flow (l/s)	49
Life (hrs / Revs)	1,000+ / 2.0+ Billion

Warranty

Parts 2 Years, Motor 3 Years
Refer Warranty Statement

Note: The Advantage vacuum cleaner design incorporates Patent App. No. 2015904843, Registered Design App. No. 201612860, Innovative Patent App No. 2016101477, EZ2GO™ No. 1787984

16 ADVANTAGE WARRANTY

Appliances manufactured by Rugged Industries Pty Ltd are to the highest quality standards. We encourage you to care for your product and follow the instructions in this manual, and in turn you will benefit with a product that provides performance and long life.

The following statement is a requirement under Australian Consumer Law and applies to consumer sale of goods and services. In this statement "Our" means Rugged Industries and "you" means original purchaser.

" Our goods come with guarantees that cannot be excluded under the Australian Consumer Law. You are entitled to a replacement or refund for a major failure and for compensation for any other reasonably foreseeable loss or damage. You are also entitled to have the goods repaired or replaced if the goods fail to be of acceptable quality and the failure does not amount to a major failure "

In addition to guarantees under Australian Consumer Law, Rugged Industries warrants the Advantage vacuum cleaner against faulty material and/or workmanship for a period of two years, and the vacuum motor for a period of 3 years from the date of purchase, when operated and maintained in accordance with the instructions in this manual.

The following explains conditions and what to do in the event of a claim:

Rugged Industries will replace parts determined as faulty, but does not apply to normal consumable parts that require replacement under normal use including but not limited to rubber parts, filters, hoses, power cords, floor tools, dusting brush, crevice tools, turbine brush etc.

Warranty does not cover any machine or component that has been altered, abused, neglected, modified used with non-genuine Rugged Industry components.

Warranty does not cover damage by transportation, accident, misapplication or improper service, blockages, sucking up water, use and instructions that is not in accordance with the Advantage Owner's Manual.

Warranty does not cover freight, transport, delivery or return of product.

All repairs and servicing during the warranty period must be carried out by authorised Rugged Industries service agent or authorised person.

Rugged Industries will not be responsible for cost of repairs or damages caused by unauthorised persons.

Warranty claims must be made within the warranty period and proof of purchase must be supplied with the claim.

17 WARRANTY REGISTRATION DETAILS

Purchaser: _____ Purchase Date: _____

Address: _____

State: _____ Post Code: _____ Contact: _____ Ph: _____

Model No: _____ Serial No: _____

Purchased From: _____

Address: _____

Manufactured by:
Rugged Industries Pty Ltd
33 Antoine Street
Rydalmere NSW 2116 Australia

Rev 011216

Pg 11