



# Producer™

AAM's Producer manages content across an entire cinema circuit to deliver visibility and control from one central point.

Producer gives you:

- Real-time monitoring of all content and playback across a circuit
- Proactive notification of content and KDM errors
- Visibility of all content, and tools to manage from head office
- Operational efficiencies through centralised processes
- Powerful content management and reporting
- Centralised and automated pre-show management
- KDM management across all sites from head office

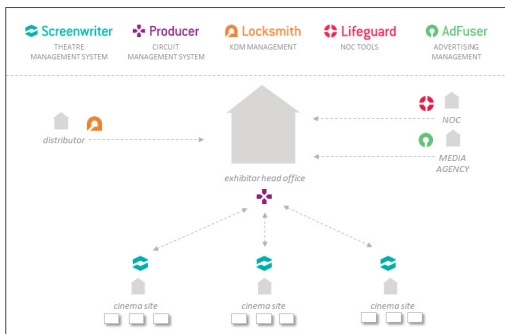


# WHAT IS PRODUCER?



**PRODUCER** is an enterprise content management system that works across a whole cinema circuit to centralise and automate processes. The software provides information from each site back to head office and gives a bird's eye view of exactly what is happening at your cinemas.

Producer allows cinema circuits to fully enjoy the benefits of digital cinema by automating day-to-day tasks, providing early alerts to any problems, reducing human error and keeping all your cinemas running smoothly.



*AAM's Integrated Software Solution*

# CONTENT MONITORING

Centralised monitoring of content anywhere across the circuit with reports for any upcoming issues.

- View and search all content across the circuit.
- See upcoming content issues such as missing or corrupt content across all sites and screens.
- Real time information on playlist and schedule status.
- Check that expected content has arrived at site and is ready for playback, and see where content is missing.
- See how planned schedules match with imported POS data.

The screenshot displays the 'Producer' interface for content monitoring. It includes a search bar, filters for 'Only Favourites', 'Show Unavailable Content', and 'Show Awaiting Approval'. A table lists content items with columns for 3D, Type, Title, and Duration.

3D	Type	Title	Duration
LD	Feature	AAM_DIGITAL_LOGO_HD-133_EN-XX_GB-XX_00_20080303_AAM	00:00:06
LD	Feature	AlexanderTerrible_FTR_S_EN-XX_US-PG_51_2K_AAM_20141017_AAM_IOP_OV	01:20:25

Below the table, the status of content is shown for various sites:

- Content Present** (toggle)
- Missing Key** (toggle)
- Error Present** (toggle)
- AAM Brighton 2** (1 green circle)
- AAM Cambridge** (3 green circles)
- AAM East London 1** (5 green circles)
- AAM East London 2** (5 green circles)

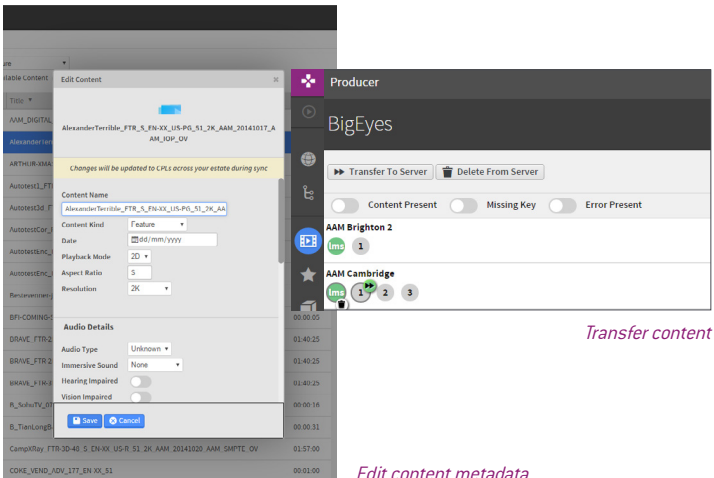
*View and search all content*

*See where content and KDMs exist*

# CONTENT MANAGEMENT

Manage content centrally, allowing problems to be fixed easily and giving head office control.

- Transfer content within a cinema to enable emergency changes, or delete content no longer required.
- Manage film titles and content metadata centrally, and distribute data to each site automatically to ensure consistency.
- Title management to improve playout accuracy - automatically select the right version of a film to play in a particular screen.



# LOCKSMITH

Never worry about KDMs again with AAM's Locksmith. Increase control and reduce errors through Locksmith KDM technology integrated seamlessly into Producer.

- Automate the entire KDM process, with ingestion and delivery of KDMs to the right screen, at the right site.
- Manage, upload or resend KDMs centrally.
- See any missing KDMs for upcoming shows with Locksmith's proactive monitoring.
- Automatically request any missing KDMs from Locksmith's central database.
- See confirmation of successful ingest at TMS and media player level.

*View and  
search all  
KDMs*

The screenshot displays the Locksmith application interface. At the top, there's a navigation bar with 'Upload KDM', 'Resend', and 'Delete From Producer' buttons. Below this is a search bar and a table of KDMs. The table has columns for 'CPL Title', 'Valid From', 'Valid To', 'Complex', 'Screen', 'Delivery Status', and 'Actions'. The table lists several KDMs for 'JAMG EYRE\_FTR\_F' and 'JAMG EYRE\_FTR\_F\_EN ES\_S1\_2K\_CCR'. Below the table, there's a section titled 'Today' with 'KDM Issues' and a list of affected schedules. To the right, there's a section titled 'Tomorrow' and 'Day after' with similar 'KDM Issues' and affected schedules. The interface is clean and professional, with a dark header and light body.

CPL Title	Valid From	Valid To	Complex	Screen	Delivery Status	Actions
JAMG EYRE_FTR_F_ES45_ES_S1_2K_CCR_20111128.MPS_OV	2011-11-29	2019-01-01			New	Download
JAMG EYRE_FTR_F_EN ES_S1_2K_CCR_20111128.MPS_OV	2011-11-29	2019-01-01			New	Download
JAMG EYRE_FTR_F_EN ES_S1_2K_CCR_20111128.MPS_OV	2011-11-29	2019-01-01			New	Download
JAMG EYRE_FTR_F_EN ES_S1_2K_CCR_20111128.MPS_OV	2011-11-29	2019-01-01			New	Download

**Today**

**KDM Issues**

TheJudge\_FTR\_S\_EN\_XL\_US-  
R\_71\_2K\_AAM\_20141017\_AAM\_IOP\_OV  
• AAM Landmark House - 21 schedules affected

GOODATHURZ\_FTR\_S\_EN\_XL\_US-  
R\_71\_2K\_AAM\_20141017\_AAM\_IOP\_OV  
• AAM Liverpool - 1 schedules affected

4 The Godfather II 20:00:12

**Tomorrow**

**KDM Issues**

SecondBEMH\_FTR\_S\_EN\_XL\_US-  
V\_71\_2K\_TCF\_20150119\_ENH\_IOP\_OV  
• AAM Bath 1 - 2 schedules affected

2 The Second Best Exotic Marigold Hotel 18:00:00

2 The Second Best Exotic Marigold Hotel 20:40:00

TheJudge\_FTR\_S\_EN\_XL\_US-  
R\_71\_2K\_AAM\_20141017\_AAM\_IOP\_OV  
• AAM Landmark House - 11 schedules affected

**Day after**

**KDM Issues**

TheJudge\_FTR\_S\_EN\_XL\_US-  
R\_71\_2K\_AAM\_20141017\_AAM\_IOP\_OV  
• AAM Landmark House - 6 schedules affected

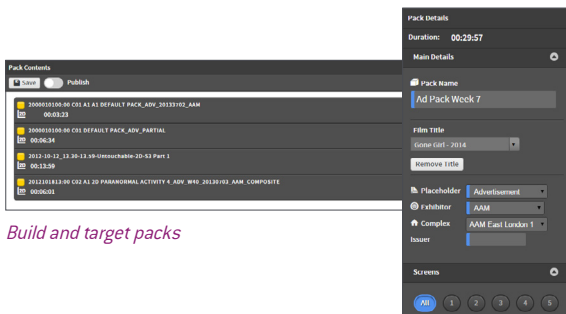
TheoryEverything\_FTR\_S\_EN\_XL\_US-  
EN\_71\_2K\_UP\_20141202\_MPS\_IOP\_OV  
• AAM Bath 1 - 1 schedules affected

*See all upcoming KDM problems*

# PACK MANAGEMENT

Create, target and deliver all trailer and advertising playlists from head office for automated insertion at sites, eliminating human error and enabling dynamic programming.

- Build packs from content and target them by a combination of show type, film title, region, rating, date or time of day.
- Minimise time required at sites to build pre-show playlists, freeing up staff for customer-facing duties.
- View pack status report to be sure that packs have been successfully delivered to sites.
- Packs are automatically delivered and inserted into the appropriate shows, eliminating human error.
- Full reporting on ad pack delivery and playback log reporting for proof of play – audit trail increases your control and reliability for advertisers and distributors.



*Build and target packs*

# LOG COLLECTION & LIVE PLAYBACK

Centralised reporting gives you visibility over all your sites. Generate accurate reports from head office, using minimal resources and time.

- Report playback events and filter by distributor, title, version, content type, site and date range.
- See where actual playback history diverges from planned schedules to identify unplanned or missed shows.
- Export reports for further analysis or extract original SMPTE format logs for compliance reporting.

Schedules

Packs

Playback

Devices

All complexes

CPL

Select a title

Select a distributor

Select a content kind

Date from







2015-03-21

to

2015-03-23

Download Log

Download Raw Log

Type	Content	Screen	Duration	Start	End	Feature	Pack	Complex
	AGE-OF-STUPID_TRL-1_F_EN-EN_XX_20_2K_AAM_20090815_AAM	5	00:02:14	10:29:27 2015-03-23	10:31:41 2015-03-23	YoungOnes	NA	AAM Landmark House
	2012-10-12_14.30-14.59-On_The_Road-2 D-S1 Part 1	5	00:13:59	10:15:28 2015-03-23	10:29:27 2015-03-23	YoungOnes	NA	AAM Landmark House
	BOLCHOI-1415-UK-MODERN_TLR_F_51_2K_20140717_LUM_INT_OV	1	00:01:06	10:12:46 2015-03-23	10:13:52 2015-03-23	PrincessKaguya	NA	AAM Cambridge
	Trailer_PhRec_36_jan_V2	1	00:00:36	10:12:15 2015-03-23	10:12:51 2015-03-23	PrincessKaguya	NA	AAM Cambridge
	Trailer_Vintage_Sundays_March_2015	3	00:00:58	10:12:03 2015-03-23	10:13:01 2015-03-23	Mommy	NA	AAM Cambridge
	QT452DCMI_ADV_EN-XX-UK-XX_51_2K_20131003_DCM	3	00:00:15	10:11:47 2015-03-23	10:12:02 2015-03-23	Mommy	NA	AAM Cambridge

*Playback reports*

See exactly what is happening on your screens with live playback.

- View a live timeline of current and planned playback at any site.
- See all planned schedules at sites, and drill down to see the actual playlist content and any errors with clear colour coding.
- See what is happening on screen when supported IP cameras are fitted.



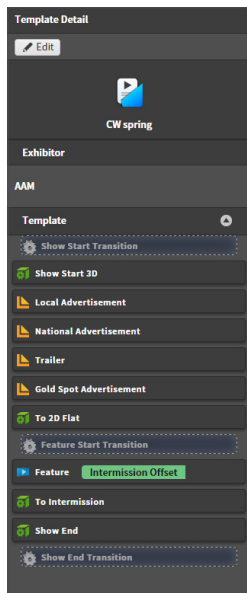
### Playlist detail



# PLAYLIST AUTOMATION

Automated playlist building under centralised head office control reduces missed shows due to errors and frees up on-site staff for customer service.

- Manage a playlist template and synchronise across the estate for brand consistency.
- Content is automatically inserted into placeholders in the playlist template with no room for human error.
- Deal with multiple versions and automate version selection through centralised title management.
- Integrated with Screenwriter TMS to manage playlist creation, scheduling and content transfers with no local interaction.



*Playlist template with placeholders*

---

### Theatre Management System (TMS) Support \*

AAM Screenwriter; Christie Avias™; Cinemeccanica Cinecloud™

*\*Support for cinemas with no TMS or other TMS systems can be provided through AAM's Theatre Core technology. Contact us for more details.*

### Media Player Support \*

Barco; Christie; Dolby; Doremi; GDC; IMAX; Qube; Sony

*\*Supports multiple different servers in the same complex*

### Projector Support

Barco; Christie; Kinton; NEC; Sony

### Web-based User Interface

Best in class and easy to use. Unlimited number of client connections.

### Browser Support

Firefox; Chrome; Internet Explorer 9+

### Language Support

English; Chinese; German; Italian; Japanese; Portuguese; Russian; Spanish; Turkish

### Hosting

Provided by AAM as cloud-based SaaS (Software as a Service)

*Accessible through secure VPN or through secure HTTP with 2 factor authentication*

## CONTACT US

sales@artsalliancemediacom

+44 (0)20 7751 7500

www.artsalliancemediacom



KEEP  
CALM  
AND  
GET  
CENTRALISED

