

PDi

Communication Systems, Inc

CV-Series Healthcare-grade LCD Televisions

The CV-Series is the non modular PDi Communication Systems Inc. selection of healthcare-grade LCD televisions. Available in screen sizes 22", 26" and 32". The PDi CV-Series television is the perfect complement to the award winning modular series of PDi televisions.

The CV-Series can be used with standard VESA wall mounts as specified or table stands.

The CV-Series line of televisions come with all of the healthcare-grade features and support you have come to expect from PDi, the leader in providing healthcare-grade solutions since 1980.



CV3200P



CV2200



CV2600P



CV-Series

CV-Series 22" • 26" • 32"

- Non-Modular
- Great Picture Quality
- High Quality Components
- Highly Reliable
- Flat Front Surface is Easy to Clean
- UL Approved For Hospital Use in The US and Canada (UL/ UL 60065 Annex Q)
- Bed A/B Functionality
- Selectable Pillow Speaker Function
- Pro:Idiom Enabled (Except on the CV2200)
- Cloneable
- Min/Max Volume Settings
- Programmable Source Selection
- 2-year Parts and Labor Warranty
- Eligible for 4-year Gold Vision Service

A complete solution brought to you by the nation's oldest engineering design and manufacturing company providing complete healthcare-grade TV swing arm solutions since 1980... PDi.



PDi Communication Systems, Inc.
40 Greenwood Ln Springboro, OH 45066
Toll-free 800.628.9870 | Fax 937.743.9871

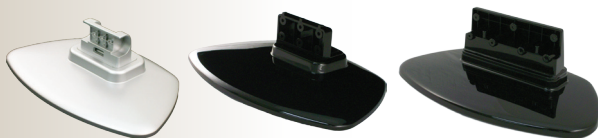
www.pdiarm.com

SPECIFICATIONS

Model No.	CV2200	CV2600P	CV3200P
PANEL			
Diagonal Screen Size	21.5" (54.6 cm)	26" (66.0 cm)	31.5" (80.0 cm)
Aspect Ratio	16:9	16:9	16:9
Native Display Resolution	1920 X 1080P	1366 X 768 WXGA	1366 X 768 WXGA
Contrast Ratio	1000:1	3000:1	3000:1
Brightness	300 nits	420 nits	420 nits
Viewing Angle	170(H)/160(V)	178(H)/178(V)	178(H)/178(V)
Response Time	6.5ms(Gray to Gray)	6.5ms(Gray to Gray)	6.5ms(Gray to Gray)
Lamp Life	50,000 hrs	50,000 hrs	50,000 hrs
Menu OSD	English/French/Spanish	English/French/Spanish	English/French/Spanish
VIDEO BROADCASTING			
NTSC (Air VHF/UHF,CATV,IRC,HRC)	YES	YES	YES
ATSC/Clear QAM (Air VHF/UHF,CATV,IRC,HRC)	YES	YES	YES
MPEG 4/Pro:Idiom	NO	YES (MPEG-4)	YES (MPEG-4)
Supported Formats (1080p/1080i/720p/480p/480i)	YES	YES	YES
AUDIO			
Speakers	2@3-Watt RMS	2@5-Watt RMS	2@5-Watt RMS
Analog (Mono/Stereo/SAP)	YES	YES	YES
Digital (Multilingual)	YES	YES	YES
HEALTHCARE SPECIFIC FEATURES			
Audio Volume Limiter	YES	YES	YES
Internal Speaker Disable	YES	YES	YES
Min/Max Volume Limiter	YES	YES	YES
Start/ Power-on Volume	YES	YES	YES
Selectable Pillow Speaker	YES	YES	YES
Universal Pillow Speaker Recognition	YES	YES	YES
Auto Power On	YES	YES	YES
Channel Enable/Disable	All channel for ATSC and NTSC	All channel for ATSC and NTSC	All channel for ATSC and NTSC
Bed A/B	YES	YES	YES
Programmable Source Selection	YES	YES	YES
Direct Access to source from Pillow Speaker	YES	YES	YES
Progressive Scan	YES	YES	YES
Parental Control (V-CHIP)	YES	YES	YES
Clone Programmable	YES	YES	YES
3D digital Comb filter	YES	YES	YES
Sleep Timer	YES	YES	YES
Restore Factory Defaults	YES	YES	YES
FM Radio	YES	YES	YES
A/V INPUT/OUTPUT			
USB Port	YES	YES, 2	YES, 2
RF Antenna Input	1 (75ohm Unbalanced)	1 (75ohm Unbalanced)	1 (75ohm Unbalanced)
HDMI With HDCP	YES, 1	YES, 2	YES, 2
VGA Input	YES	YES	YES
PC Audio Input	YES	YES	YES
Audio L/R Input	YES	YES	YES
S-Video Input	YES	YES	YES
Component Video Input	YES, 1	YES, 1	YES, 1
Composite Input	YES	YES	YES
CCI/MTI	YES	YES	YES
Digital Audio Output	YES	YES	YES
Analog Audio Output	NO	YES	YES
Pillow Speaker (3 conductor 1/4 female, TIP=Audio, RING=Data, SLEEVE=Common)	YES	YES	YES
POWER			
Source	120V AC (-10%,+10%) 50/60 Hz	120V AC (-10%,+10%) 50/60 Hz	120V AC (-10%,+10%) 50/60 Hz
Consumption	70W	90W	120W
Standby Consumption	<1W(pillow speaker disable)	<1W(pillow speaker disable)	<1W(pillow speaker disable)
REGULATORY			
Healthcare Grade UL/cUL 60065 Annex Q	YES	YES	YES
RoHS	YES	YES	YES
ACCESSORY			
Quick Start Guide	YES	YES	YES
User's Manual	Available Online	Available Online	Available Online
Warranty Card	Available Online	Available Online	Available Online
Hospital Grade Power Cord	Integral 6 FT	Integral 6 FT	Integral 6 FT
Patient Remote / Program Remote	Yes, Optional	Yes, Optional	Yes, Optional
TV Stand	Yes, Optional	Yes, Optional	Yes, Optional
UNIT CHARACTERISTICS			
Cabinet Color	Silver	Silver	Silver
Weight Lbs. (kg)	10 lbs (4.53 kg)	18 lbs (8.16 kg)	25 lbs (11.34 kg)
Unit Dimension In. (h*w*d) (cm)	14" x 3" x 21" (35.5 * 53.3 * 7.6)	17.25" x 3.9" x 26.3" (43.2 * 66.0 * 9.9)	20" x 3.7" x 31" (50.8 * 78.7 * 9.4)
Wall Mounted VESA Pattern	YES, 75 X 75 MM	YES, 200 X 200 MM	YES, 200 MM X 400MM

Design, features and specifications are subject to change without notice.

TV Stand
Optional



2yr factory TV warranty
standard or upgrade to
4yr GVS – Gold Vision
Service Plan



©2013 PDi Communication Systems, Inc. All rights reserved. Persona is a trademark of PDi Communication Systems, Inc. Other products and services may be trademarks or registered trademarks of their respective companies.

For more information contact
your local distributor or please
call: 1.800.628.9870

PDi
Communication Systems, Inc

Document Number: MAR-723-F2R2