

	This symbol indicates that dangerous voltage constituting a risk of electric shock is present within this unit.
	This symbol indicates that there are important operating and maintenance instructions in the literature accompanying this unit.

	CAUTION RISK OF ELECTRIC SHOCK, DO NOT OPEN!	
CAUTION: TO REDUCE THE RISK OF ELECTRIC SHOCK, DO NOT REMOVE COVER. NO USER SERVICEABLE PARTS INSIDE. REFER SERVICING TO QUALIFIED SERVICE PERSONNEL		

THIS INSTALLATION SHOULD BE MADE BY A QUALIFIED SERVICE PERSON AND SHOULD CONFORM TO ALL LOCAL CODES. READ AND FOLLOW THE SAFETY INSTRUCTIONS BEFORE ATTEMPTING THIS INSTALLATION.

Note to CATV system installer: This reminder is provided to call the CATV system installer's attention to Article 820-40 of the NEC that provides guidelines for proper grounding and, in particular, specifies that the cable ground shall be connected to the grounding system of the building, as close to the point of cable entry into the room as practical.



WARNING: OXYGEN ENVIRONMENT Do not use in any oxygen tent or oxygen chamber. Such use may cause a fire hazard.

WARNING: To avoid the hazards of fire or electric shock, DO NOT expose this Video Cassette Player to rain or moisture.

INTRODUCTION

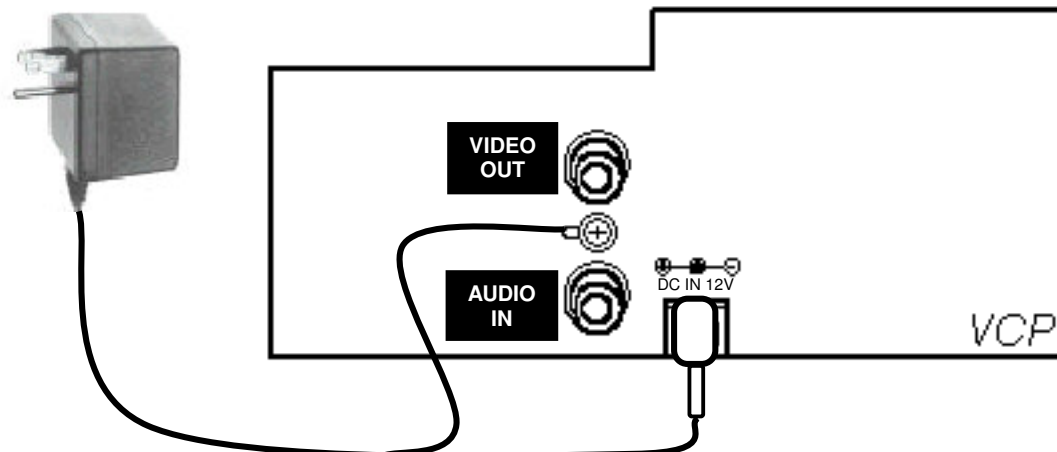
The model PDI-VCP-ULKIT-A Video Cassette Player is a specialize product intended for entertainment and educational purposes for use in a hospital, a nursing home, a medial-care center, or a similar health-care facility in which installation is limited to a non-hazardous area in accordance with the National Electrical Code, ANSI/NFPA 70. It is not intended for use in a critical-care area in which a patient may be treated with an externalized electrical conductor, such as a probe, a catheter, or other electrode, connected to the heart: however, the product is likely to be contacted by a patient during his stay in a health-care facility.

POWERING THE VCP

1. Plug the DC input into the back of the VCP labeled "DC IN 12V".
2. Plug the AC Accessory Power Pack adapter into an operating 120V AC outlet.



This VCP utilizes a specialized Hospital Grade AC Power Pack adaptor (supplied) Part No PD239-227. DO NOT defeat the grounding pin of this adaptor. Do NOT use this VCP with a substitute AC adaptor – doing so will compromise the safety of this hospital VCP system.

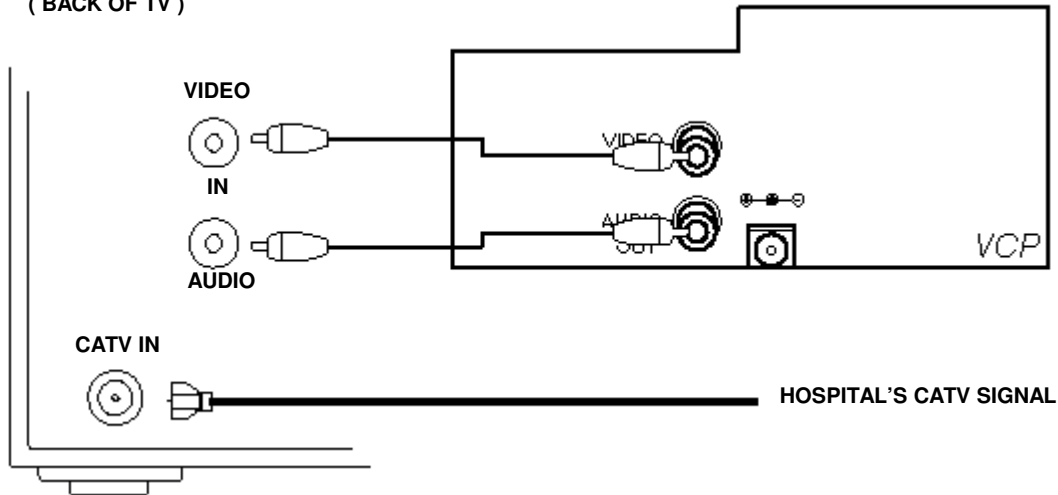


DIRECT CONNECTION TO TV'S A / V

1. Connect the Yellow Cable (supplied) between the VCP's Video Out jack and the TV's Video In jack.
2. Connect the White Cable (supplied) between the VCP's Audio Out jack and the TV's Audio In jack.

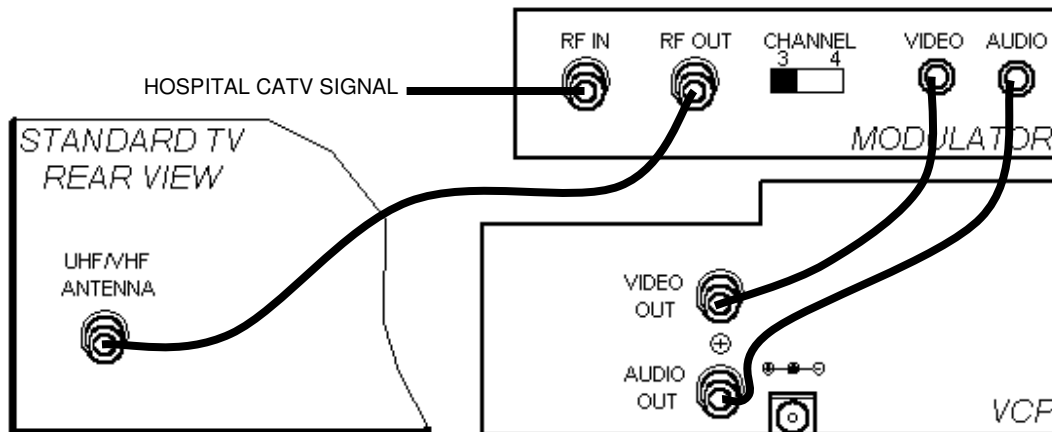
NOTE: Switch the TV to the A / V mode to view the VCP signal.

(BACK OF TV)



CONNECTION WITH RF MODULATOR

This VCP does not provide modulated RF signal. To use this VCP with a TV that does not have Video or Audio inputs an RF modulator is required such as: Radio Shack 15-1244, Radio Shack 15-1214, Recoton V649, Terk MOD-34, or similar. Please refer to your modulator's instructions for hook-up. In general, Video, Audio, and RF Signal are connected as shown below.



MODULATOR SUPPLIERS

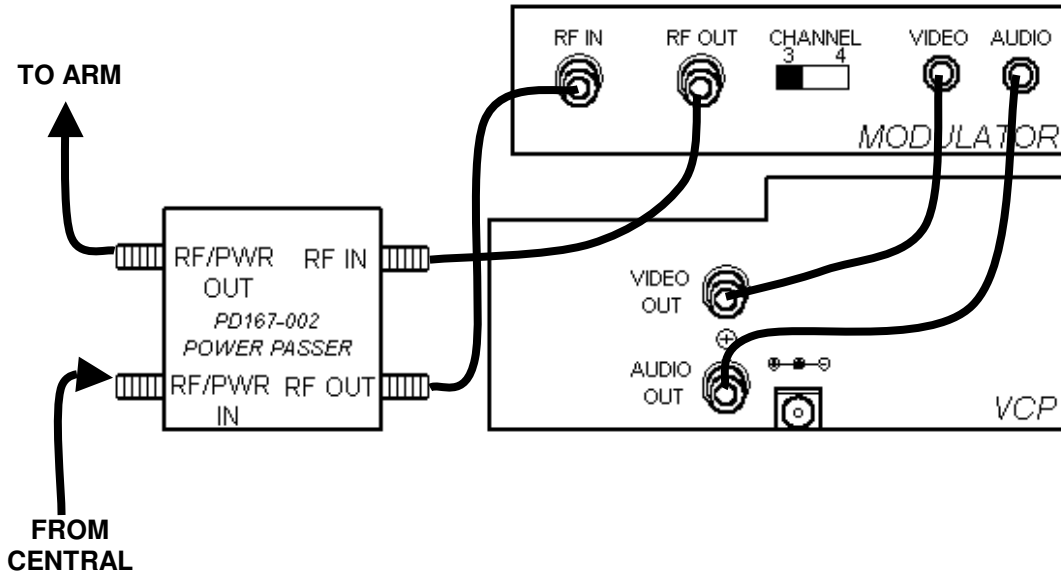
PDI does not supply a modulator with this VCP. Please contact one of the supplies listed below for volume purchasing.

RADIO SHACK Models 15-1244, 15-1214	1-800-THE-SHACK	http://www.radioshack.com
RECOTON Model VMOD-34	1-888-955-6000	http://www.crutchfield.com

CONNECTION TO COAX LINE-POWERED SMALL SCREEN TV

The model PD167-002 Power Passer (not supplied) is a specialized device that allows video devices to be inserted and operated in a coax line-powered TV system.

1. Remove power from the TV at the central power supply.
2. In the room locate the coaxial cable from the central power supply. Connect this cable to RF/PWR IN.
3. Connect the coaxial cable that exits the base of the suspension arm to RF/PWR OUT.
4. Apply power to the central power supply and test TV.



SERVICING

Do not attempt to service this product yourself, as opening or removing covers may expose you to dangerous voltage or other hazards. Refer all servicing to qualified service personnel. Unplug this product from the wall outlet and refer servicing to qualified service personnel under these conditions:

- a. If power-supply cord or plug is damaged.
- b. If liquid has been spilled or objects have fallen into product.
- c. If product has been exposed to rain or water.
- d. If product doesn't operate normally by following handbook instructions. Adjust only those controls covered by handbook instructions: improper adjustment of other controls may result in damage and often requires extensive work by a qualified technician to restore product to normal operation.
- e. If product has been dropped or cabinet has been damaged.
- f. If product exhibits a distinct change in performance.

Operation Summary

For additional instructions see the Zenith Operating Guide

PLAYING A VIDEO CASSETTE

- Turn on the TV.
- If the VCP is connected to the TV via a modulator, tune the TV to the same channel (3 or 4) as the Channel 3/4 switch on the back of modulator.
- If the connection is made via the VCP's Audio/Video Out Jacks, your TV must be set to receive audio and video from an auxiliary source. (Refer to your TV operating instructions.)
- To view a VHS cassette tape, insert it into the cassette compartment. The VCP will automatically turn on, play the tape to its end, rewind the tape, eject the tape, and shut off. If necessary, use the TRK (TRACKING) control to adjust for the best picture.

NORMAL TV VIEWING

To watch TV, simply place VCP in TV mode by pressing TV/VCR on the remote repeatedly until the TV/VCR indicator light disappears from the VCP front panel. If the TV antenna or cable-TV line has been connected to modulator as shown in this manual, its signal will pass through the turned-off VCP unaffected, as if connected directly to the TV.

Troubleshooting and Maintenance

Before requesting Warranty service, please refer to the chart below. It may help you avoid a service call.

OPERATING PROBLEM		
Observed Condition	Possible Cause	Probable Solution
No Power to the VCP	AC Power Wall Pack is not connected. Power Connector at VCP not connected.	Connect it.
The tape will not rewind	Tape is already rewind.	No action is necessary.
Operating sound is audible during playback, rewind, fast forward, etc.	Normal Condition.	No Action is necessary.
The playback picture does not appear while the tape is running.	You are using the RF OUT jack on the modulator, but the TV is not turned to the correct Video Channel. You are using the VCP audio/video Out Jacks but the TV is not set to AUX channel or Audio/Video IN source.	Set the TV to either modulator channel 3 or channel 4. Set the TV to AUX channel or Audio/Video IN source.
Noise appears during search and still pictures.	Normal condition.	No action is necessary
Noise appears during playback.	The tracking needs to be adjusted.	Adjust tracking.
Playback picture is blurred or interrupted while normal TV picture is clear.	Video heads may be dirty.	Head cleaning is necessary.
Cassette cannot be inserted into VCP.	The cassette is being loaded backwards or upside down or another cassette is already loaded. AC Power Wall Pack is not connected. Power Connector at VCP not connected.	Load cassette in direction indicated by arrow on cassette, or remove the cassette that is loaded already. Connect it.
Remote control does not work.	Batteries are not installed or old.	Install or replace with new batteries.
Dew Indicator is lit.	Excessive condensation.	Keep power ON until indicator turns off.

MAINTENANCE

VIDEO HEAD CLEANING

You VCP automatically cleans the heads as it is used. After long periods of use, the video heads may become clogged with accumulated dirt, causing distortion (snow, streaking in picture and horizontal pulling of picture). When this occurs, use do-it-yourself VHS wet head cleaning cassettes.

CLEANING AND DISINFECTING

This product may be cleaned with hospital grade disinfectant. However, certain precautions must be followed during cleaning.

- A. Unplug this product from the AC wall outlet before cleaning.
- B. Do not spray this product directly with cleaner since cleaning liquid might enter the product and cause damage. Rather, apply the cleaning liquid to a cloth and wipe the product.
- C. Do not autoclave the AC power pack. Rather, apply the cleaning liquid to a cloth and wipe.

LIMITED WARRANTY

PDI Communication Systems warrants, to the original purchaser only that all new PDI products (excluding any equipment manufactured by others and included in PDI's shipment) are free from defects in material for a period of one year from date of shipment. Workmanship to be covered for a period of ninety (90) days.

After receipt of written notice of a defect or malfunction occurring during the warranty period, PDI will repair or replace goods returned to its Springboro, Ohio location, at its discretion, free of charge to the original purchaser, the whole or any component part of any product manufactured by PDI and found by PDI to be defective.

As a condition to obtaining warranty service, written notification must be received by PDI within at least ten (10) days after defect is first observed. Repair of said product requires it to be shipped to the PDI factory in Springboro, Ohio, all shipments shall be F.O.B. Springboro, Ohio, and all shipping and freight charges to and from PDI's factory shall be paid by the customer.

This warranty shall not apply to any PDI products subjected to improper use, negligence or accident; nor to tampering, alterations, or repairs by others, without PDI's specific prior written authorization. For information regarding authorized servicing and all other information pertaining to this warranty, please contact PDI COMMUNICATION SYSTEMS at 40 Greenwood Lane, Springboro, Ohio 45066 or phone 513-743-6010.

This warranty gives specific legal rights. There may also be other rights which vary from state to state.

PDI's liability under this warranty is limited to repair or replacement of defective products and parts as provided above. PDI shall not be liable for incidental or consequential damages.*

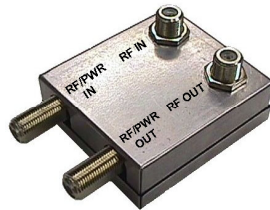
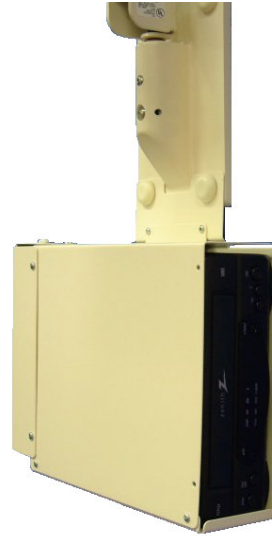
The warranty contained herein is in lieu of all other expressed or implied warranties, including any implied warranty of merchantability or fitness for any particular purpose. PDI neither assumes nor authorizes any person to assume, on its behalf, any other obligation or liability.

*Some states do not allow the exclusion of limitation of incidental or consequential damages or a disclaimer of warranties implied by law, so the above limitation or exclusion may not apply.

Other accessories from PDI

PD240-410 VCP Tray

Convenience tray mounts directly to suspension arm wall bracket and provides a clean VCP installation and minimizes patient tampering.



PD167-002 Power Passer

Routes coax power around an externally connected device and safely powers a small screen hospital television from a central power supply.