

 PDi Communication Systems, Inc. Your Source for Healthcare and Wellness Infotainment™	MODEL NUMBER: <h2 style="text-align: center;">PD181-660</h2>	Document Number: PD196-177R4
	<h3>Bolt Down TV Table Stand</h3>	Page 1 of 3

**SCOPE:**

TO ATTACH A 42, 43 OR 50 ELED TV TO A PD181-660 TABLE STAND USING A PDI BRACKET KIT (PURCHASED SEPARATELY)

**SAFETY STEPS:**

1. ALWAYS WEAR SAFETY GLASSES/GOGGLES TO PREVENT INJURY FROM DEBRIS.
2. FOLLOW THE INSTALLATION/REMOVAL INSTRUCTIONS FOR YOUR EXISTING PRODUCTS.

**TOOLS:**

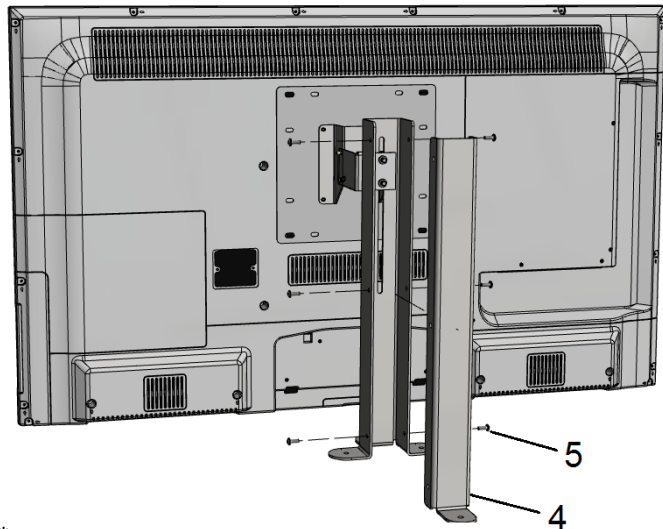
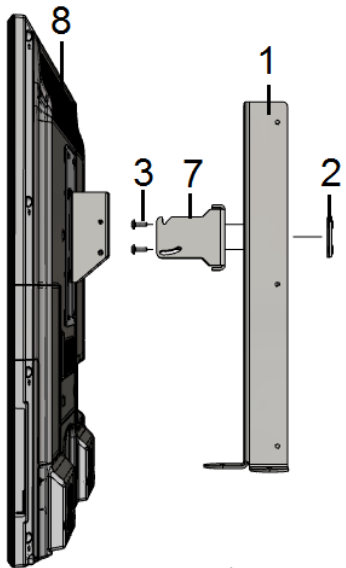
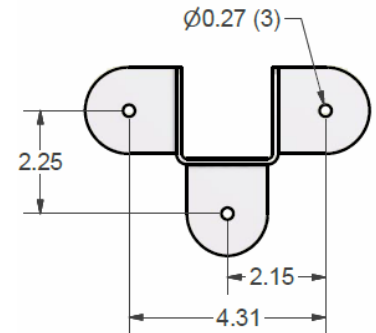
1. P1 OR P2 PHILLIPS SCREWDRIVER
2. 1/4" HEX BIT DRIVER
3. SAFETY GLASSES/GOGGLES

**PROCEDURE:**

1. SECURELY MOUNT PD181-620 STAND (#1) TO TABLE SURFACE USING 1/4" FASTENERS (CUSTOMER SUPPLIED).
2. ATTACH THE VERTICAL WALL MOUNT BRACKET FROM CHOSEN MOUNT KIT (#7) TO THE PD181-620 STAND (#1) USING THE PD181-619 NUT PLATE (#2), AND PDIBSHCS252050 BUTTON SOCKET HEAD CAP SCREWS (#3). THIS MOUNT HAS AN ADJUSTABLE MOUNTING HEIGHT FEATURE. DETERMINE THE PROPER MOUNTING HEIGHT AND SECURELY TIGHTEN THE TWO 1/4 -20 X 1/2 BUTTON SOCKET HEAD CAP SCREWS.
3. NEXT, MOUNT THE ELED TV USING PARTS SUPPLIED WITH CHOSEN MOUNTING KIT.
4. FINALLY, ATTACH PD181-618-S (#4) TO PD181-620 (#1) USING SIX PDIPPHMS103250 SCREWS (#5), THEN BOLT THE LEG TO THE TABLE USING 1/4"FASTENERS (CUSTOMER SUPPLIED).

**PARTS LIST**

ITEM	PART NUMBER	DESCRIPTION	QTY
1	PD181-620	STAND	1
2	PD181-619	NUT PLATE	1
3	PDIBSHCS 2520 50	1/4 – 20 X 1/2 BUTTON SOCKET HEAD CAP SCREW	2
4	PD181-618-S	STIFFENER: FOR LARGE SCREEN TABLE MOUNT	1
5	PDIPPHMS103250	PHILLIPS PAN HEAD MACHINE SCREW 10-32 X ½	6

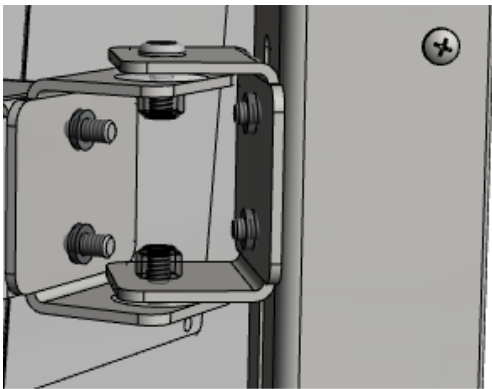


\*E42 shown for reference\*

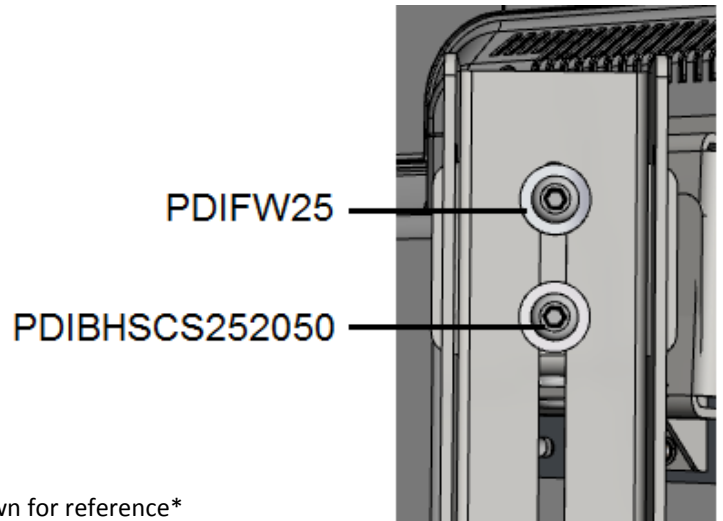
 PDi Communication Systems, Inc. Your Source for Healthcare and Wellness Infotainment™	MODEL NUMBER: <p style="text-align: center;"><b>PD181-660</b></p>	Document Number: PD196-177R4
	Bolt Down TV Table Stand	Page 2 of 3

**MOUNTING INSTRUCTIONS FOR LCD TABLE MOUNT WITH PAN OPTION:**

1. SECURELY MOUNT PD181-620 STAND TO TABLE SURFACE USING THREE 1/4" FASTENERS (CUSTOMER SUPPLIED).
2. ATTACH PD168-004 (PAN OPTION KIT, PURCHASED SEPARATELY) TO PD181-620 USING THE (2) 1/4 -20 X 1/2 BUTTON SOCKET HEAD CAP SCREWS AND TWO 1/4" FLAT WASHERS AS PICTURED IN DETAILS "D" AND "E".
3. ATTACH VERTICAL WALL MOUNT BRACKET FROM PURCHASED MOUNTING KIT TO PD168-004 USING THE HARDWARE PROVIDED IN THE PAN OPTION KIT.
4. DETERMINE THE PROPER MOUNTING HEIGHT AND SECURELY TIGHTEN THE TWO 1/4 -20 X 1/2 BUTTON SOCKET HEAD CAP SCREWS.
5. NEXT, MOUNT THE ELED TV ACCORDING TO INSTRUCTIONS INCLUDED IN THE PURCHASED MOUNTING KIT.
6. FINALLY, ATTACH PD181-618-S (#4) TO PD181-620 STAND USING (6) PDIPPHMS103250 (10-32 X .5") SCREWS, THEN BOLT THE LEG TO THE TABLE USING 1/4" FASTENER (CUSTOMER SUPPLIED).



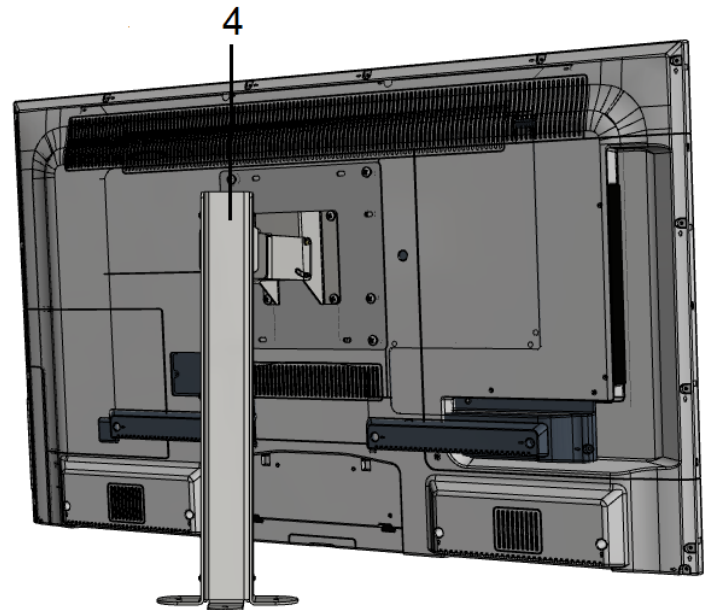
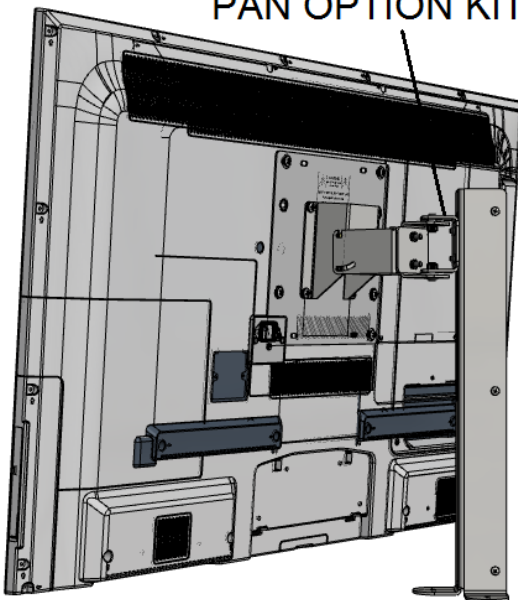
**PD168-004 ASSEMBLY  
DETAIL D**



\*E42 shown for reference\*

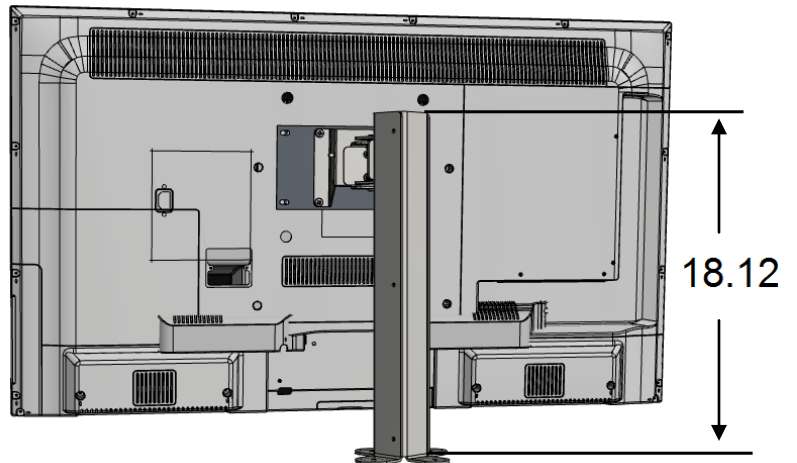
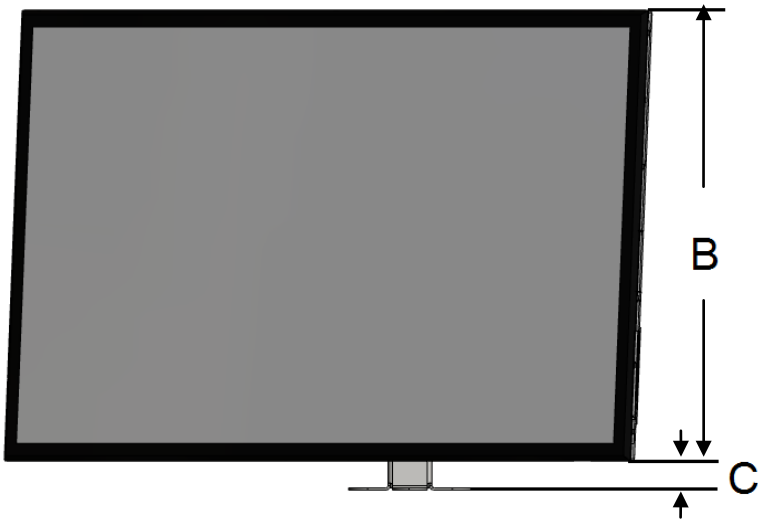
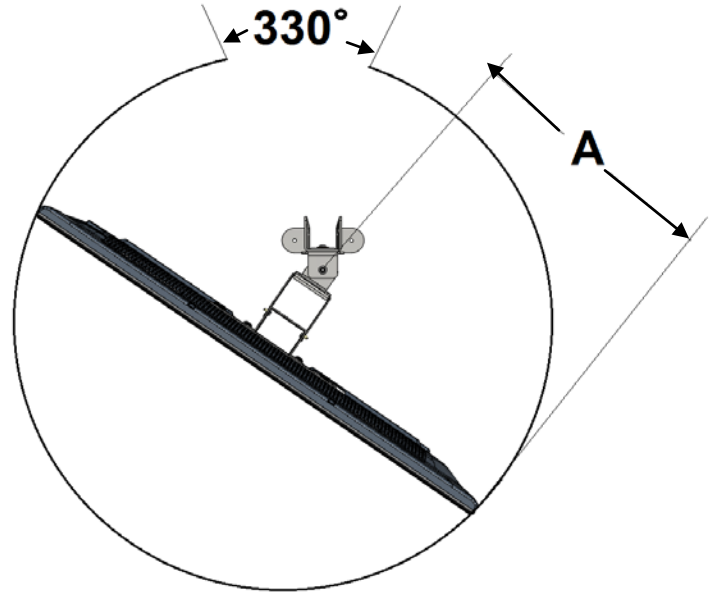
**DETAIL E**

**PD168-004  
PAN OPTION KIT**



 PDi Communication Systems, Inc. <i>Your Source for Healthcare and Wellness Infotainment™</i>	MODEL NUMBER: <b>PD181-660</b>	Document Number: PD196-177R4
	<b>Bolt Down TV Table Stand</b>	Page 3 of 3

A, B, C VALUES VARY DEPENDING ON ELED TV SIZE.



\*E42 shown for reference\*