

	MODEL NUMBER: <b>PDI-P15X HIGH TILT MODELS</b>	Document Number: PD196-218R3
	High Tilt Swivel Installation Instructions	Page 1 of 2

## Installation for High Tilt Swivel

### Safety steps:

1. Always wear safety glasses/goggles to prevent injury from debris.
2. Follow the installation/removal instructions for your existing product.

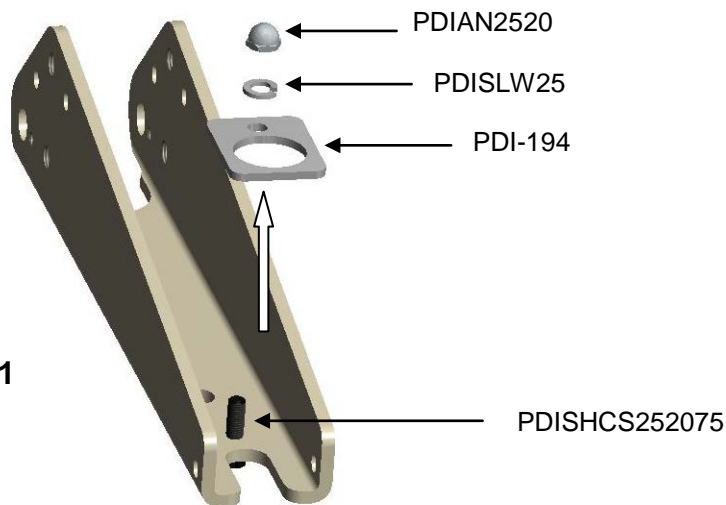
### Tool List:

1. Safety glasses/goggles
2. Wrench or socket for removing and tightening PDIAN2520 acorn nut. (not included)
3. 3/16" allen wrench for PDISHCS252075 if needed.

### **Installation:**

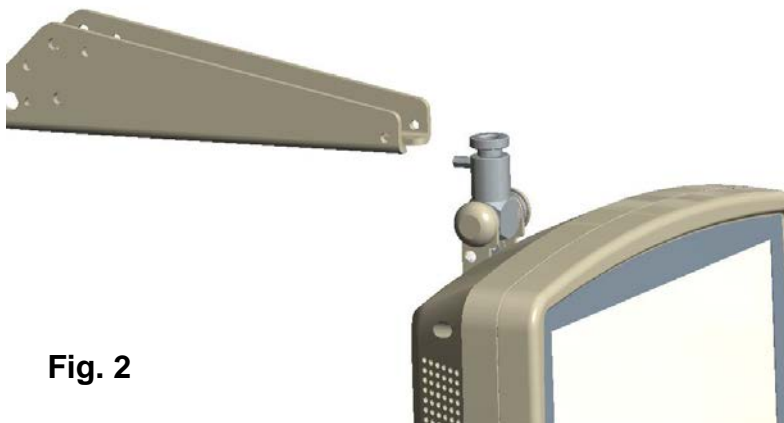
1. If the arm has the swivel retainer already installed, start by removing PDIAN2520 acorn nut, PDISLW25 split lock washer, and PDI-194 retainer from the nose of the arm. (Fig. 1)

**NOTE:** At this time, if the arm does not have the PDISHCS252075 retainer bolt, install as shown and securely tighten with allen wrench.



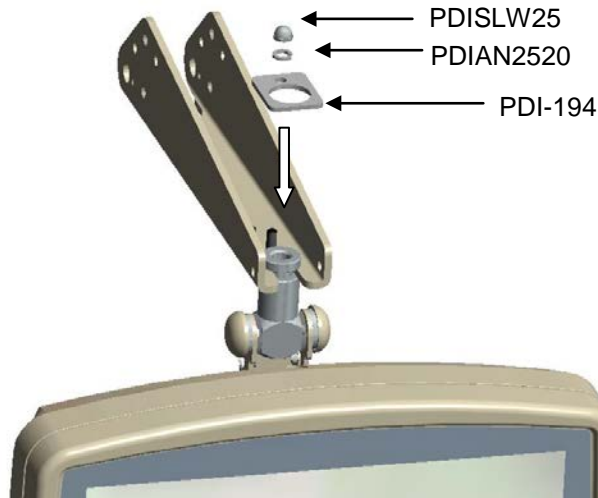
**Fig. 1**

2. Insert swivel stem of TV into nose of arm mount. (Fig. 2)



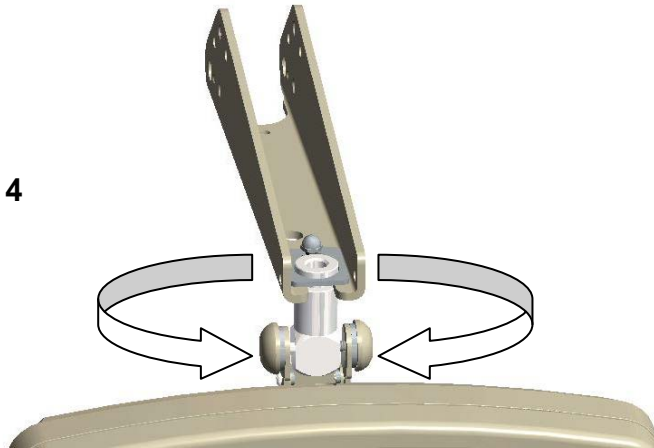
**Fig. 2**

3. Place swivel stem to arm using PDI-194 retainer, then secure retainer to nose of arm using PDISLW25 split lock washer and PDIAN2520 acorn nut. Tighten securely with tool. (Fig. 3)



**Fig. 3**

4. Rotate the TV from “stop” to “stop” to verify that there are no binding or interference conditions. (Fig. 4)
5. Mate arm coax with TV coax. Wrench tighten and cover with protective boots.
6. Secure arm nose cover in place (not shown).



**Fig. 4**