



PDI-E42LEDA
Modular High Definition
Healthcare-grade LED Television

Document Number: PD196-278R3



MODEL NUMBER:
PDI-E42LEDA-NK LED TV

Document Number:
PD196-278R3

Service Manual

Page 2 of 11



Table of Contents



Copyright, Disclaimer, and Trademarks.....	3
Regulatory Information.....	4
Product Safety Servicing Precautions.....	4
PDI-E42LEDA-NK Specifications.....	5
Disinfecting and Cleaning	6
Checking Points to Consider.....	6
Product Identification.....	6
Back Cover.....	6
Speakers	7
Board Removal.....	7
Parts List	8
Basic Troubleshooting Steps	9
Reassembly.....	10
Safety Checks	11

	MODEL NUMBER: PDI-E42LEDA-NK LED TV	Document Number: PD196-278R3
	Service Manual	Page 3 of 11

	This symbol indicates that dangerous voltage constituting a risk of electric shock is present within this unit.		CAUTION	
	This symbol indicates that there are important operating and maintenance instructions in the literature accompanying this unit.	CAUTION: TO REDUCE THE RISK OF ELECTRIC SHOCK, DO NOT REMOVE COVER. NO USER SERVICEABLE PARTS INSIDE. REFER SERVICING TO QUALIFIED SERVICE PERSONNEL		

This Service Manual is intended for use by qualified service persons possessing an adequate background in electrical equipment, electronic devices, and mechanical systems. In any attempt to repair a major product, personal injury and property damage can result. The manufacturer or seller maintains no liability for the interpretation of this information, nor can it assume any liability in conjunction with its use. When servicing this product, under no circumstances should the original design be modified or altered without permission from PDi. Unauthorized modifications will not only void the warranty, but may also lead to property damage or user injury.

	Ce symbole indique qu'une tension dangereuse constituant un risque de choc électrique est présente dans cet appareil.
	Ce symbole indique qu'il existe des instructions d'utilisation et d'entretien importantes dans la documentation accompagnant cet appareil.

	AVERTISSEMENT	
RISQUE DE CHOC ELECTRIQUE, NE PAS OUVRIR!		
AVERTISSEMENT: AFIN DE REDUIRE LE RISQUE DE CHOC ÉLECTRIQUE, NE PAS RETIRER LE COUVERCLE. L'APPAREIL NE CONTIENT AUCUN COMPOSANT SUSCEPTIBLE D'ÊTRE RÉPARÉ PAR L'UTILISATEUR. CONFIER L'ENTRETIEN À DU PERSONNEL QUALIFIÉ		

Cette installation doit être effectuée par un technicien qualifié et doit être conforme à tous les codes locaux. Lire et suivre les consignes de sécurité avant de procéder à l'installation.

Copyright, Disclaimer, and Trademarks

Copyright

PDi Communication Systems, Inc. claims proprietary right to the material disclosed in this service manual. This manual is issued in confidence for servicing information only and may not be used to manufacture anything shown herein. Copyright 2014 by PDi Communication Systems, Inc. All rights reserved.

Disclaimer

The author and publisher have used their best efforts in preparing this manual. PDi Communication Systems, Inc. makes no representation or warranties with respect to the accuracy or completeness of the contents of this manual and specifically disclaim any implied warranties of merchantability or fitness for any particular purpose and shall in no event be liable for any loss of profit or any other damages, including but not limited to special, incidental, consequential or other damages. The information contained herein is believed accurate, but is not warranted, and is subject to change without notice or obligation.

Trademarks

All brand names and product names used in this manual are trademarks, registered trademarks, or trade names of their respective holders.

PDi® is a registered trademark of PDi Communication Systems, Inc., Springboro, Ohio.

Dolby Digital Manufactured under license from Dolby Laboratories. "Dolby" and the double-D symbol are trademarks of Dolby Laboratories.

	MODEL NUMBER: PDI-E42LEDA-NK LED TV	Document Number: PD196-278R3
	Service Manual	Page 4 of 11

Regulatory Information

FCC
 This equipment has been tested and found to comply with the limits pursuant to part 15 of the FCC Rules. These limits are designed to provide reasonable protection against harmful interference when the equipment is operated in a residential or commercial installation. If this equipment does cause harmful interference to radio or television reception, which can be determined by turning the equipment off and on, the user is encouraged to try to correct the interference by one of more of the following measures:

- Reorient or relocate the receiving antenna.
- Increase the separation between the equipment and receiver.
- Connect the equipment into an outlet on a circuit different from that to which the receiver is connected.
- Consult the dealer or an experienced radio/TV technician for help.

Underwriters Laboratories



The model PDI-E42LEDA-NK Hospital Grade TV Receiver is a specialized television. This TV is intended for entertainment and educational purposes for use in a hospital, a nursing home, a medical-care center, or a similar health-care facility in which installation is limited to a non-hazardous area in accordance with the National Electrical Code.

This device is safety tested and listed by the Underwriters Laboratories as a product suitable for use in health care facilities in both the United States and Canada.

Energy Star



PDi Communication Systems, Inc. has voluntarily partnered with the US government as part of the ENERGY STAR® program in support of energy efficiency initiatives. The US EPA has authority over the ENERGY STAR program. As an ENERGY STAR partner, PDi Communication Systems, Inc. has determined that, in the as-shipped factory default condition, this healthcare television product meets the energy efficiency guidelines. Changes to the default as-shipped television configuration and settings, such as enabling certain optional features and functionalities, may increase energy consumption beyond the limits required for ENERGY STAR qualification. ENERGY STAR is a registered mark owned by the US government. For more information, visit www.energystar.gov.

ESD Notice (Electrostatic Discharge)

Today's electronics are electrostatic discharge (ESD) sensitive. ESD can weaken or damage the electronics in a manner that renders them inoperative or reduces the time until their next failure. Connect an ESD wrist strap to a ground connection point or unpainted metal in the product. Alternatively, you can touch your finger repeatedly to a ground connection point or unpainted metal in the product. Before removing a replacement part from its package, touch the anti-static bag to a ground connection point or unpainted metal in the product. Handle the electronic control assembly by its edges only. When repackaging a failed electronic control assembly in an anti-static bag, observe these same precautions.

Product Safety Servicing Precautions

1. **POWER SOURCE** Use only a power source indicated for use with this product. This TV will operate on AC voltage. To avoid personal injury, disconnect the power before servicing this product. If electrical power is required for diagnosis or test purposes, disconnect the power immediately after performing the necessary checks.
2. **REPLACEMENT Replace** only with the part number specified.
3. **VOLTAGE CHECKS Exercise** care when making voltage and waveform checks to prevent costly short circuits from damaging the unit.
4. **METAL OBJECTS** Be cautious of lost screws and other metal objects to prevent a possible short in the circuitry.
5. **SAFETY CHECKS** This hospital grade television requires special safety checks before returning to service. Observe and follow the "Safety Check" section in this service manual.



MODEL NUMBER:
PDI-E42LEDA-NK LED TV

Document Number:
PD196-278R3

Service Manual

Page 5 of 11

PDI-E42LEDA-NK Specifications

PANEL		
Diagonal Size		42" (106.7cm)
HDTV compatible		Yes
Aspect Ratio		16:9
Native Display Resolution		1920 x 1080
Contrast Ratio		1000:1
Viewing Angle		176° V / 176° H
Response Time		8 ms
Color Depth		1.07G
Luminance (nits)		330
Backlight Lamp Life (hours)		30,000
Backlight Type		LED
VIDEO BROADCASTING		
ATSC/NTSC/Clear QAM		Air VHF/UHF, CATV, IRC,HRC
MPEG4/Pro:Idiom		Yes
FM Tuner		88.1 – 107.9 MHz
Supported Formats		1080p/1080i/720p/576p/576i/480p/480i
AUDIO		
Speakers/Audio Output Power		2 x 5W RMS
Analog Channels		Mono/Stereo/SAP
Digital Channels		Multilingual
Tone Control Balance		Yes
HEALTHCARE SPECIFIC FEATURES		
Internal Speaker Disable		Yes
Min/Max Volume Limiter		Yes
Start/Power-on Volume		Yes
Selectable Pillow Speaker		+12VDC, +5VDC, OFF, -5VDC
Universal Pillow Speaker Recognition		Yes
Auto Power On		Yes
Channel Enable/Disable		Yes
Bed A/B/C/D		Yes
Programmable Source Selection		Yes
Direct Access to Source from Pillow Speaker		Yes
Progressive Scan		Yes
Parental Control (V-CHIP)		Yes
USB Clone Programmable		Yes
2D Digital Comb Filter		Yes
Sleep Timer		Yes
Factory Reset		Yes
OSD Language		English/French/Spanish
A/V INPUT/OUTPUT		
AC		IEC Male, Hospital-grade
USB Port		Yes
RF Input		Yes
HDMI/HDCP Input		Yes, 2
VGA Input		Yes
PC Audio Input		Yes
Composite Input with L/R Audio		Yes
CCI/MTI/MPI Smart Plug		Yes
DVD Module Port		Yes
Pillow Speaker Output		Yes, 3 conductor ¼" female
Service Port		Yes
POWER		
Source		120V +/- 15%, 60HZ
Max Consumption		120W
Standby Consumption – Normal/Low		<15W/<1W
REGULATORY		
UL/UL 60065 Annex Q		Yes
FCC Title 15, Part 47, Subpart B		Yes
Energy Star 6.0		Yes
CEC		Yes
UNIT CHARACTERISTICS		
Cabinet Color		Black Gloss
Mount Pattern		200 x 200MM VESA, 6MM Thread
Weight (kgs) (with Stand)		33 lbs (15 kg)
Unit Dimensions Inches (WxHxD) (cm)		38.7 x 23.0 x 2.2 (98.3 x 58.5 x 5.7)

Disinfecting and Cleaning

The E42 should be disinfected before performing any service. The following procedure is only a recommendation. Your hospital or company may have a different procedure to follow.



Caution: Before using any cleaning or disinfecting agent on the E42, perform a spot check by wetting a small area of the cabinet. Verify the agent does not discolor or deteriorate the cabinet.

1. The PDI-E42LEDA-NK has been designed to withstand up to a 5% chlorine based disinfectant. Many alcohol and ammonia based disinfectants have also been tested with success. Apply the cleaner or disinfectant per its recommended instructions.

Note: Most disinfectants require a waiting time following application and prior to wipe-down.

2. The manufacturer recommends isopropyl alcohol for the cleaning of the LCD screen.

Checking Points to Consider

Dynamic picture adjustments to Brightness, Contrast, Color, and Tint are available using the IR Remote Control, Part number PD108-420, using the SETUP/Picture menu.

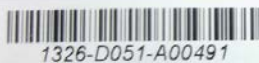
1. Check the appearance of the replacement panel and circuit boards for both physical damage and part number accuracy.
2. Check the model label. Verify model names and board model matches.
3. Check details of defective condition and history. Contact PDi with serial number for details.

Product Identification

Product Label

The E42 is easily identified using the product label located on the back cabinet housing.

Serial Number Format Explanation



Manufactured : June, 2013

1. The first two digits compose the year of manufacture. 2013 would be 13.
2. The second two digits compose the week of manufacture. 26 would be week 26.
3. The single alphabetic character represents the place of manufacturing.
4. The next three alphanumeric characters compose the unique model ID.
5. The next character is the revision level.
6. The next five digits compose the serial number starting with the first unit produced in the current year.

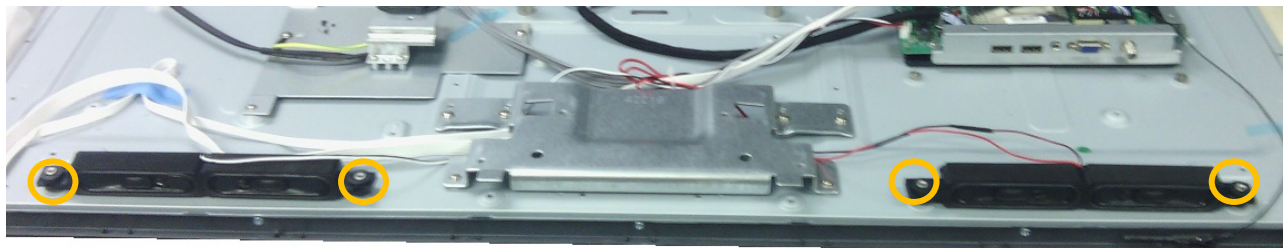
Back Cover

1. Remove 27 screws from the back cover.
2. Lift back cover and remove, being careful of tabs and cable connections.



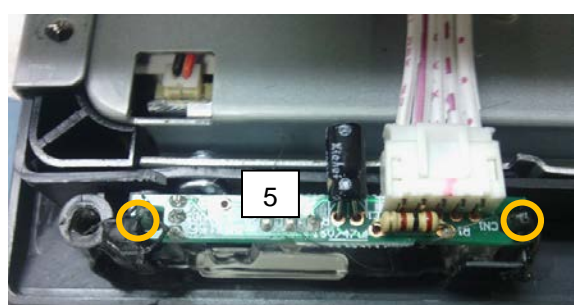
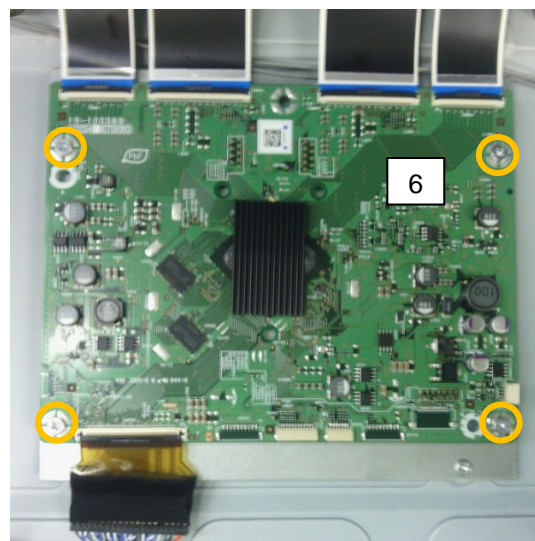
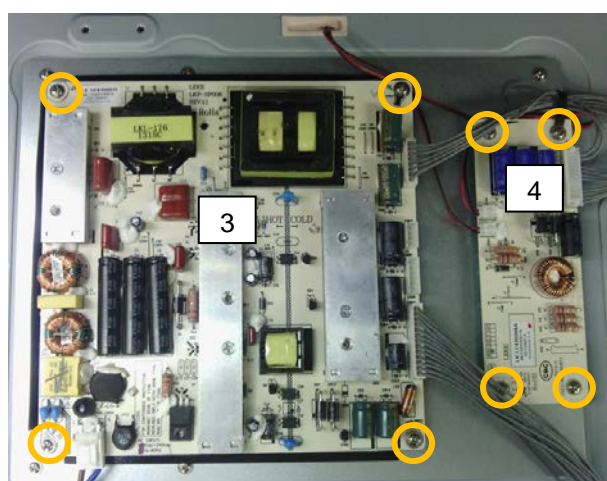
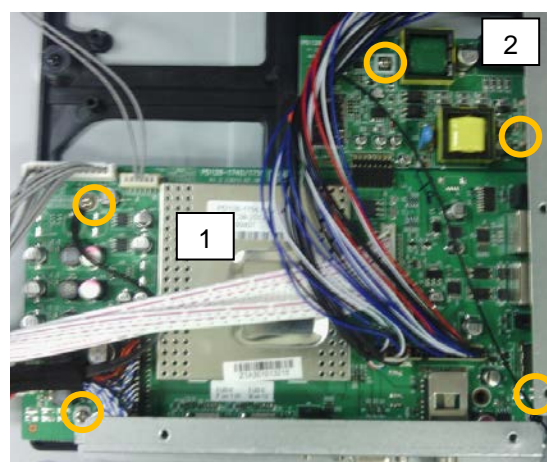
Speakers

The speakers **PD164-048** are held in place by 2 screws each as shown.



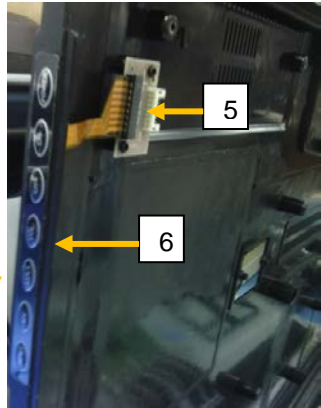
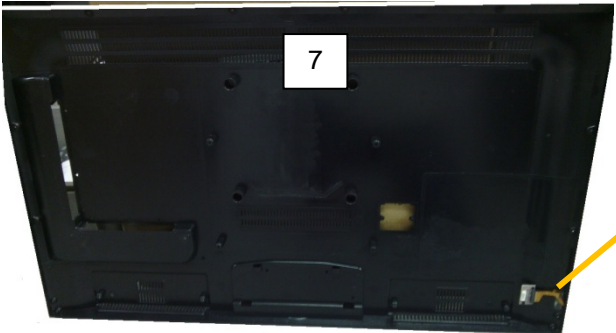
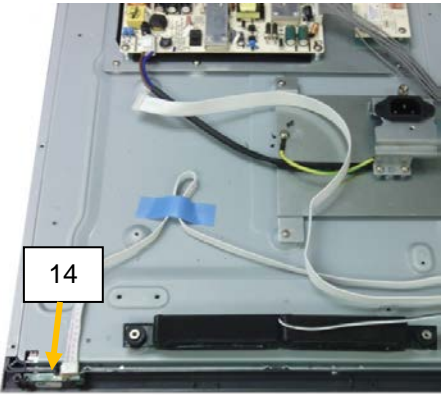
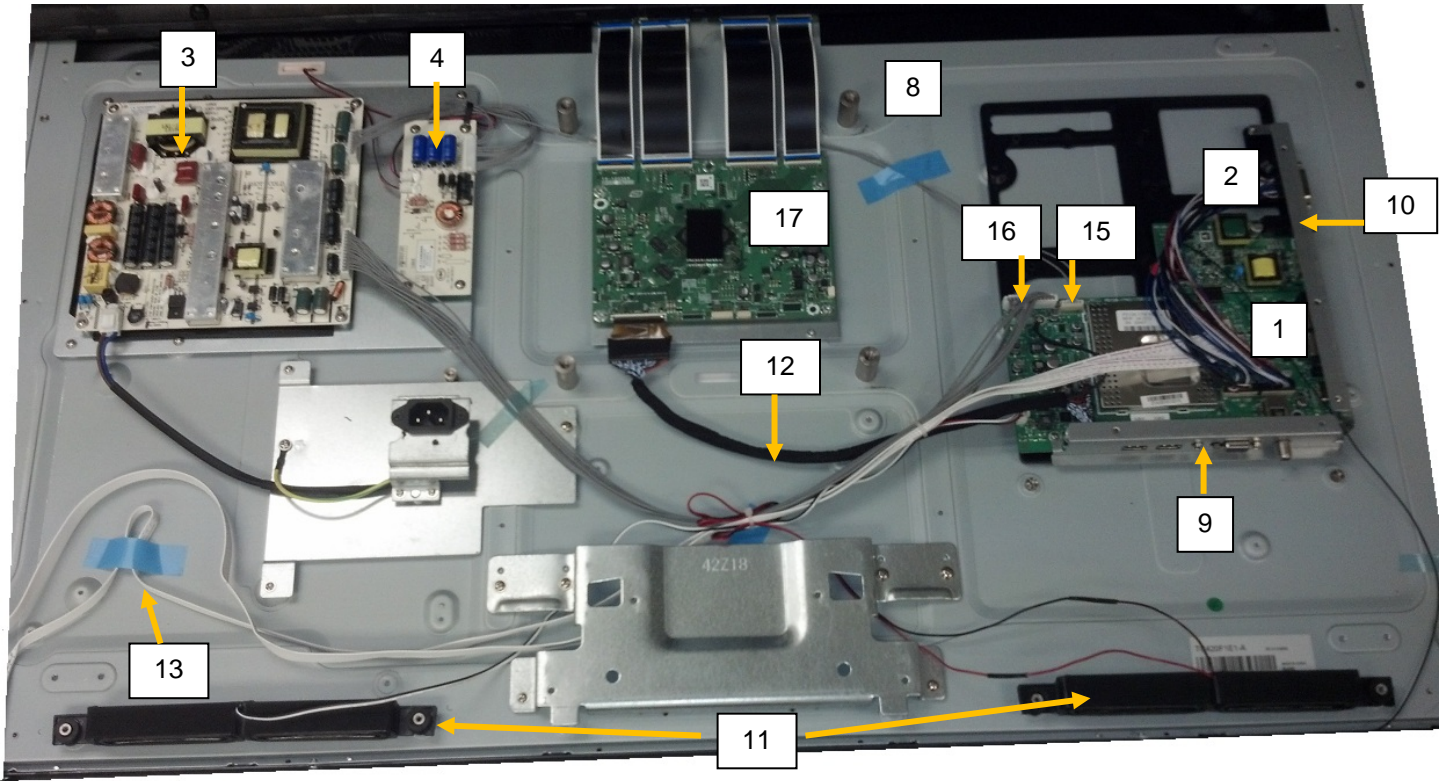
Board Removal

1. The main board **PD128-1756** is secured with 3 screws.
2. The pillow speaker board **PD128-1752** is secured with 2 screws.
3. The power board **PD128-1779** is secured with 4 screws.
4. The LED driver board **PD128-1780** is secured with 4 screws.
5. The IR board **PD128-1783** is secured with plastic tabs.
6. The TCON board **PD128-1782** is secured with 4 screws.
7. The keypad board (page 7, #5) **PD128-1774** is secured with 2 screws.



Parts List

- 1. PD128-1756 MAIN BD.
- 2. PD128-1752 PILLOW SPEAKER BD.
- 3. PD128-1779 POWER SUPPLY BD.
- 4. PD128-1780 LED DRIVER BD.
- 5. PD128-1774 KEYPAD BD.
- 6. PD134-244 KEYPAD
- 7. PD133-933 BACK CABINET
- 8. PD289-143 32" ASSEMBLY LCD PANEL
- 9. PD180-017 RF I/O FRAME
- 10. PD180-018 PILLOW SPEAKER I/O FRAME
- 11. PD164-048 SPEAKERS
- 12. PD106-798 LVDS CABLE
- 13. PD106-804 IR/KEYPAD CABLE
- 14. PD128-1783 IR BOARD
- 15. PD106-801 P101 to LED POWER CABLE
- 16. PD106-802 P102 to PSU
- 17. PD128-1782 TCON BOARD



Basic Troubleshooting Steps

Factory Reset Procedure

Many times issues can be resolved by performing a factory reset on the TV. Press and hold down “CC” button on TV and press and hold down “Last” on the remote. Hold both down simultaneously until TV displays a reset message on screen.

Symptom	Check
TV DEAD (No Power)	<ul style="list-style-type: none"> • Verify AC power cord is fully seated into TV’s power socket • Verify AC plug is connected to a powered AC outlet • Check Power cable for voltage. • Replace power supply board (PD128-1779) • Replace main board (PD128-1756) if red LED is lit.
NO COLOR	<ul style="list-style-type: none"> • Tune TV to another channel. Check for color • Adjust color settings in Setup/Picture menu • Verify correct AC line voltage is used to power TV • Verify correct signal type is set in Setup/Channels menu • Perform Auto Program • Replace LVDS cable (PD106-798) • Replace main board (PD128-1756) • Replace panel (PD289-143)
CANNOT TUNE TO A DESIRED CHANNEL	<ul style="list-style-type: none"> • Verify TV is connected to a coax cable that has RF signal • Verify channel is programmed into current service level • Tune to channel with remote • Tune to channel with TV keypad • Verify correct Signal type is set in Setup/Channels menu • Verify Channel Memory Override is enabled in Setup/Channels. • Verify Channel Lock is disabled • Replace main board (PD128-1756)
TV KEYPAD INOPERATIVE	<ul style="list-style-type: none"> • Verify TV is powered • Check TV operation with remote control • Disconnect pillow speaker jumper cable and recheck keypad • Verify that LVDS cable is seated correctly to main chassis connector • Replace keypad (PD134-244) • Replace main board (PD128-1756)
SNOWY PICTURE	<ul style="list-style-type: none"> • Verify TV RF signal level is (0 to+10dbmv at the TV) • Tune to another channel • Verify correct Signal type is set in Setup/Channels Manual • Replace LVDS cable (PD106-798) • Replace main board (PD128-1756)
NOISY PICTURE	<ul style="list-style-type: none"> • Verify TV RF signal level is (0 to+10dbmv at the TV) • Tune to another channel • Turn off nearby equipment if possible and isolate noise source • Move TV and cables to minimize or eliminate noise. • Replace main board (PD128-1756)

<p>PICTURE OK, NO PILLOW SPEAKER SOUND</p>	<ul style="list-style-type: none"> • Verify pillow speaker is fully inserted into TV's speaker jack • Try a different pillow speaker • Verify TV is not muted. Adjust for maximum volume • Replace pillow speaker board (PD128-1752) • Replace main board (PD128-1756)
<p>BLACK OR DIM PICTURE, SOUND OK</p>	<ul style="list-style-type: none"> • Check for on-screen menu and adjust for maximum brightness and contrast • Verify LVDS connector is seated on main board • Verify Backlight connectors are plugged in and secure • Replace board, LED driver (PD128-1780) • Replace LVDS cable (PD106-798) • Replace main board (PD128-1756) • Replace panel (PD289-143)
<p>PICTURE OK, NO SPEAKER SOUND</p>	<ul style="list-style-type: none"> • Verify TV is not muted. Verify cable is seated into main chassis and into IR board • Verify pillow speaker is not being used • Verify TV speaker has not been disabled for the current Service Level in the Sound/Internal Speaker Enable menu • Replace speaker (PD164-048) • Replace pillow speaker board (PD128-1752) • Check sound. If there is still no sound, replace the main board
<p>LOW VOLUME OR VIBRATION IN SPEAKER</p>	<ul style="list-style-type: none"> • Check for missing or loose screw in speaker

Reassembly

Reassemble the unit in reverse manner as the disassembly paying special attention to:

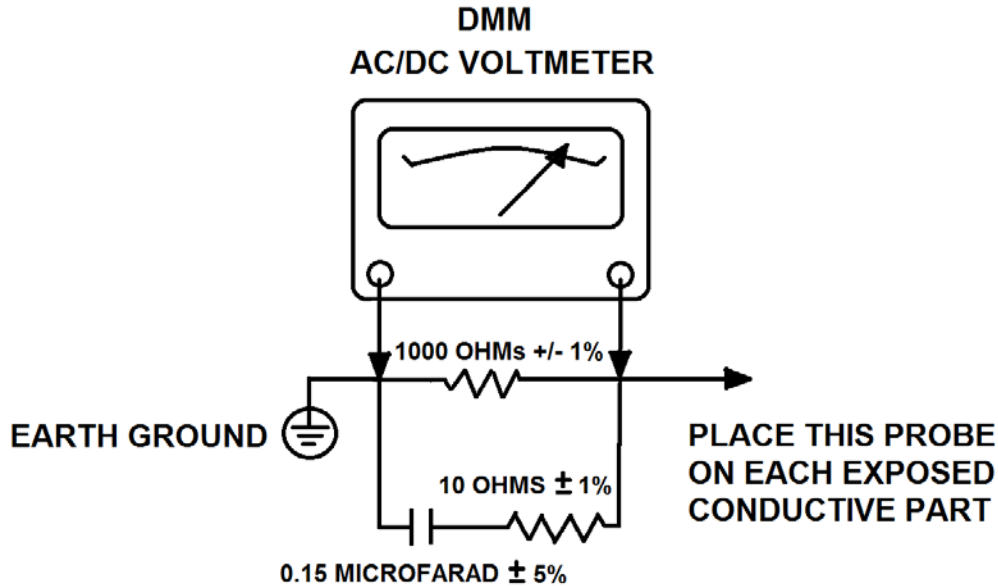
- All parts removed in the repair of the TV are reassembled in original manner.
- Wires are dressed in a way not to be damaged by reassembly.
- All circuit boards should be mounted to the chassis with screws (DO NOT over torque).

Safety Checks

Leakage Current

After re-assembly of the unit, always perform a leakage test on all exposed conductive parts such as metal connectors, chassis, and mount.

With the unit powered, the following circuit should be connected from earth ground to each exposed conductive part on the repaired unit. A DMM is placed in parallel with this circuit to measure AC rms or DC voltage. If leakage currents are greater than the maximum allowed, inspect the TV for insulation or component breakdowns.



The maximum allowed leakage current depends on the type of power the unit receives and whether the unit is within reach of the patient bed/chair.

TV Type	Max Leakage Current	Max DMM Voltage Reading
Footwall TV (120VAC grounded wall outlet)	500µA AC rms	500mV AC rms
12VDC Arm Mount TV (PDI-750XL power supply)	100µA DC	100mV DC
28VAC Arm Mount TV (PDI-750A 750B or 772HE power supply)	50µA AC rms	50mV AC rms

Contact Information

For any questions with servicing PDi televisions contact our Service Department at:

PDi Communication Systems, Inc.
 40 Greenwood Ln.
 Springboro, OH 45066 USA

800-628-9870