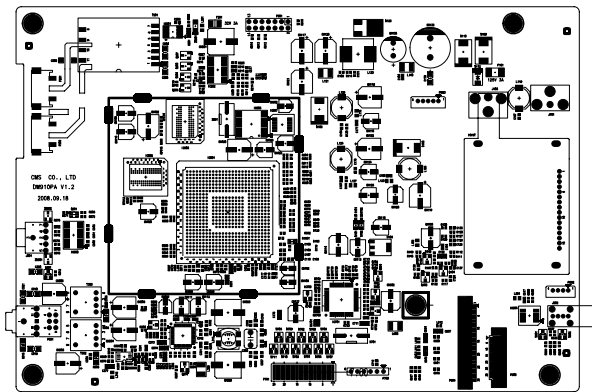


Introduction The PD128-1378-B generic replacement main board can be used to service many of the P10LCD model televisions. This procedure describes which television models are candidates and how to perform the replacement.

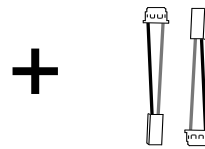
Affected Units To identify a compatible television, locate the serial number on the TV's back cabinet. The following table lists appropriate television serial numbers.

Serial Number Beginning with	Main Board Replacement Compatibility
0812-345999-F or less	Not Compatible. Component Level repair necessary. See document PDTCHB16R1.
0812-34600-F to 0839-355849-F	Unit compatible with the PD128-1378-B main board.
0850-A003-050001-A or greater	Use Replacement Main Board PD128-1434 instead.

Required Tools & Materials



PD128-1378-B Replacement Main Board



Extension
 Cables
 Included

#2 Phillips Screw Driver	Crescent or 7/16" Box End Wrench
#1 Phillips Screw Driver	ESD Mat and Wrist Strap
Vice Grip or Channel Lock Pliers	Solder Iron and Desoldering Tools

Procedure Please observe proper ESD precautions before proceeding.

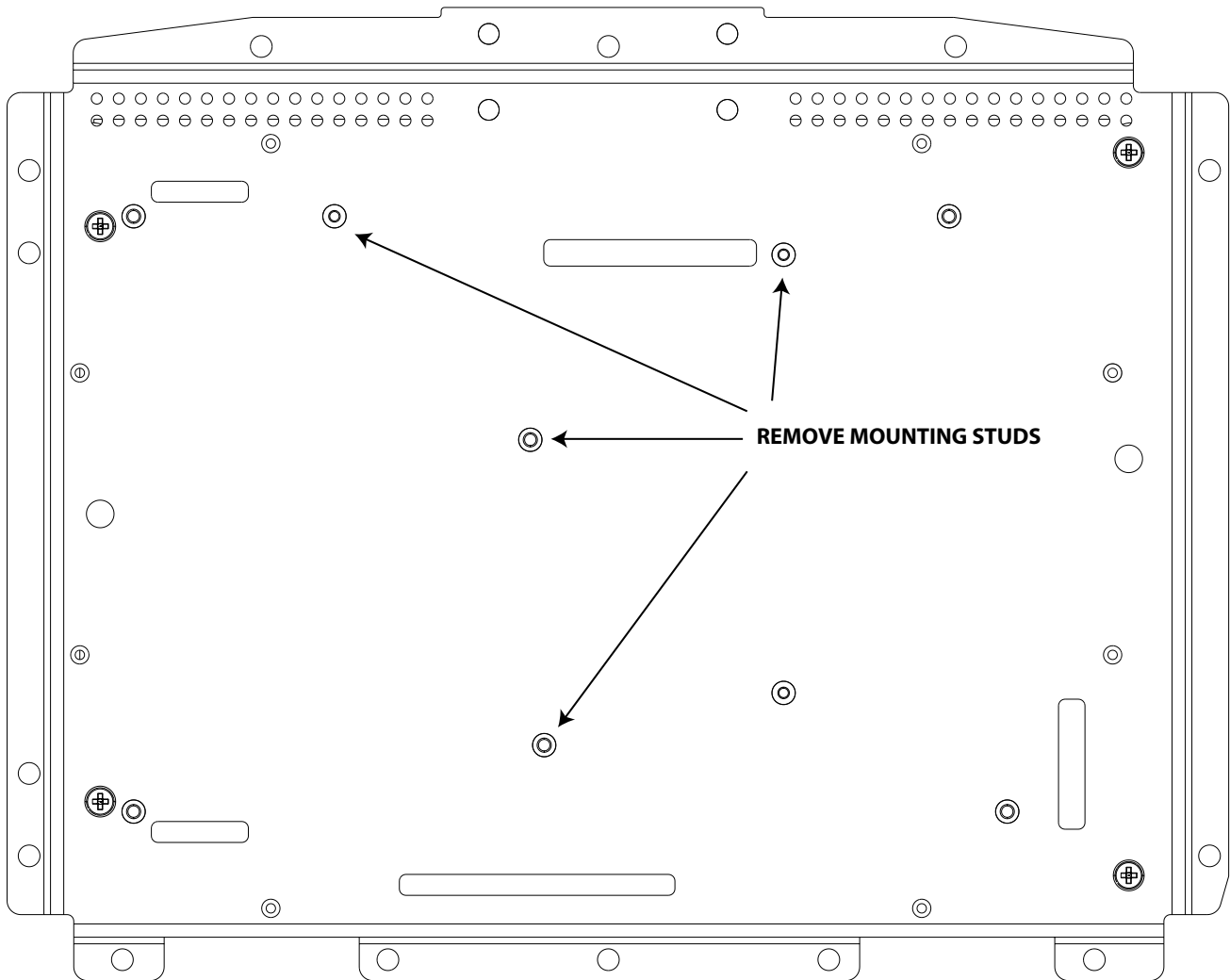
This procedure should only be performed by a qualified technician with component level repair experience.

Please refer to the full service manual for additional servicing details.¹

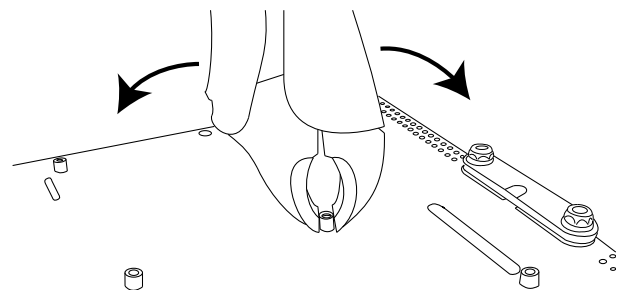
References 1) PD196168-R1.PDF, PDI-P10LCD Service Manual

Procedure Please refer to the full service manual¹ for details regarding disassembly of the TV.

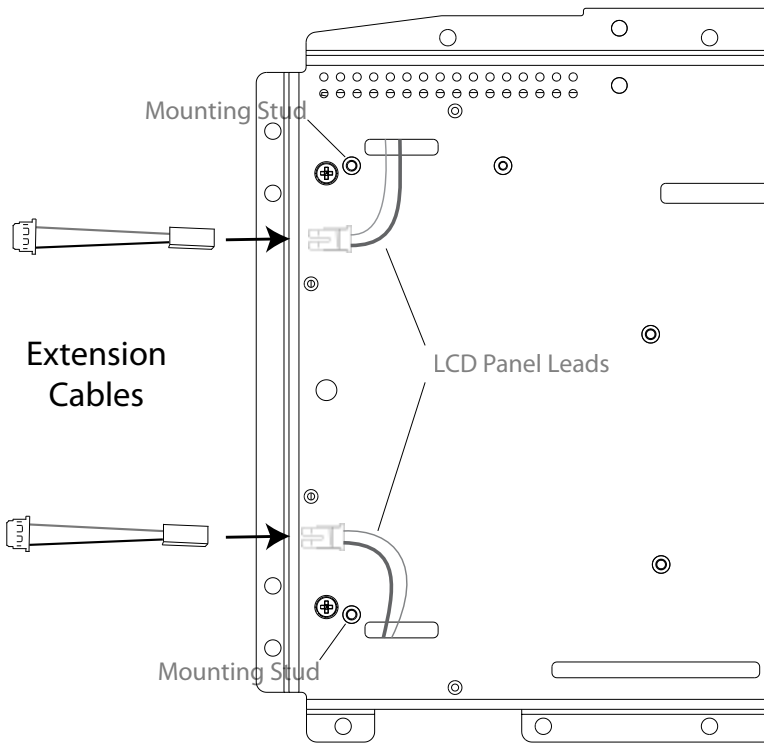
1. Remove the TV's Back Cabinet Cover
2. Remove the Internal EMI Shield and expose the Main Board.
3. Disconnect all wiring harnesses and cables from the Main Board.
4. Remove and save 9 Main Board mounting screws.
5. Remove the Main Board from the TV's metal chassis.



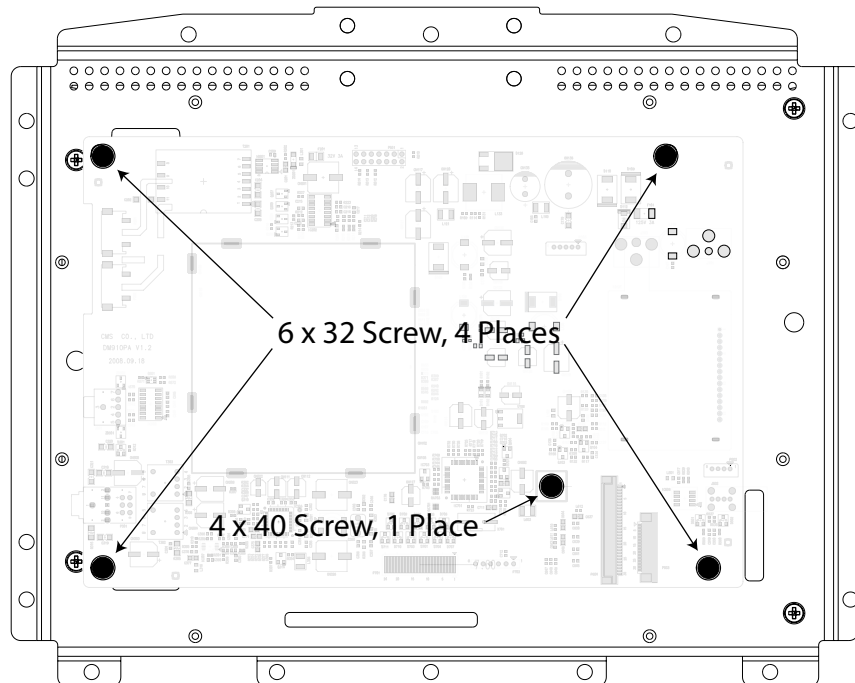
6. Locate 4 mounting studs as pictured.
7. Remove each of the 4 studs using a Vise Grip or Channel Lock Pliers. DO NOT REMOVE the remaining studs.
8. Verify no loose metal has fallen from the Metal Chassis into the TV cabinet.



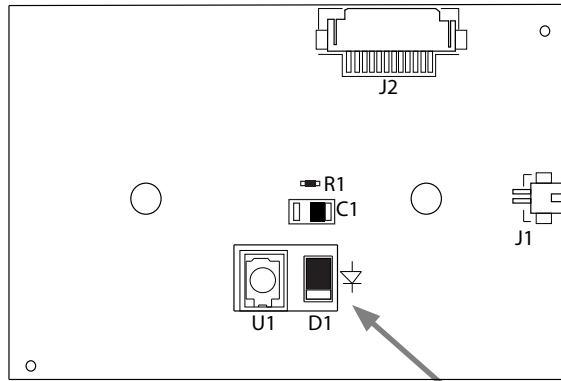
9. Locate the High Voltage LCD Panel Leads and route them around the mounting stud as shown.
10. Attach an Extension Cable to each Lead.



11. Position the replacement Main Board over the modified Metal Chassis.
12. Attach replacement Main Board with 4 of the 6x32 screws and 1, 4x40 screw removed and saved in step 4.



13. Locate the IR Speaker Board mounted near the internal speaker.
14. Remove the board from the plastic friction posts. Turn the board over and locate diode D1.
15. If the D1 location is populated with a diode, unsolder the diode and remove it from the board. If the D1 location is not populated, no further modification to the IR Speaker Board is necessary.
16. Verify the Ribbon Cable is attached to J2.
17. Verify the Internal Speaker Cable is attached to J1.
18. Reinstall the IR Speaker Board back onto the plastic friction posts.



IR SPEAKER BOARD

Remove D1

19. Dress the High Voltage LCD leads under the main board.
20. Position the EMI Shield over the Main Board taking care to avoid pinching any cables or wires. Re-attach the EMI Shield.

TEST PROCEDURE

21. Power the TV with an appropriate external power supply.
22. Turn the TV On. The front Green LED keypad lamp should flash several times and then display a visible picture with On Screen Display.
23. Re-assemble the back cabinet and perform the safety checks mentioned in the service manual¹.

TROUBLESHOOTING

TV Will Not Turn On

1. Check power path to the TV. The small LED D101, located near the center of the board (component side) will light if the TV is receiving power. A second LED diode D102 will light if the TV receives a power on command.
2. Verify the Keypad Ribbon Cable is correctly connected to the Main Board. Verify the Keypad Ribbon Cable is also correctly connected to J2 on the IR Speaker Board.

TV No Picture Displayed

1. Verify the LCD Panel's Video Cable is correctly seated to Main Board connector P604.
2. Verify LCD High Voltage and Extension Cable connectors are correctly seated to the Main Board.

Refer to the Service Manual¹ for additional troubleshooting suggestions.

END OF PROCEDURE