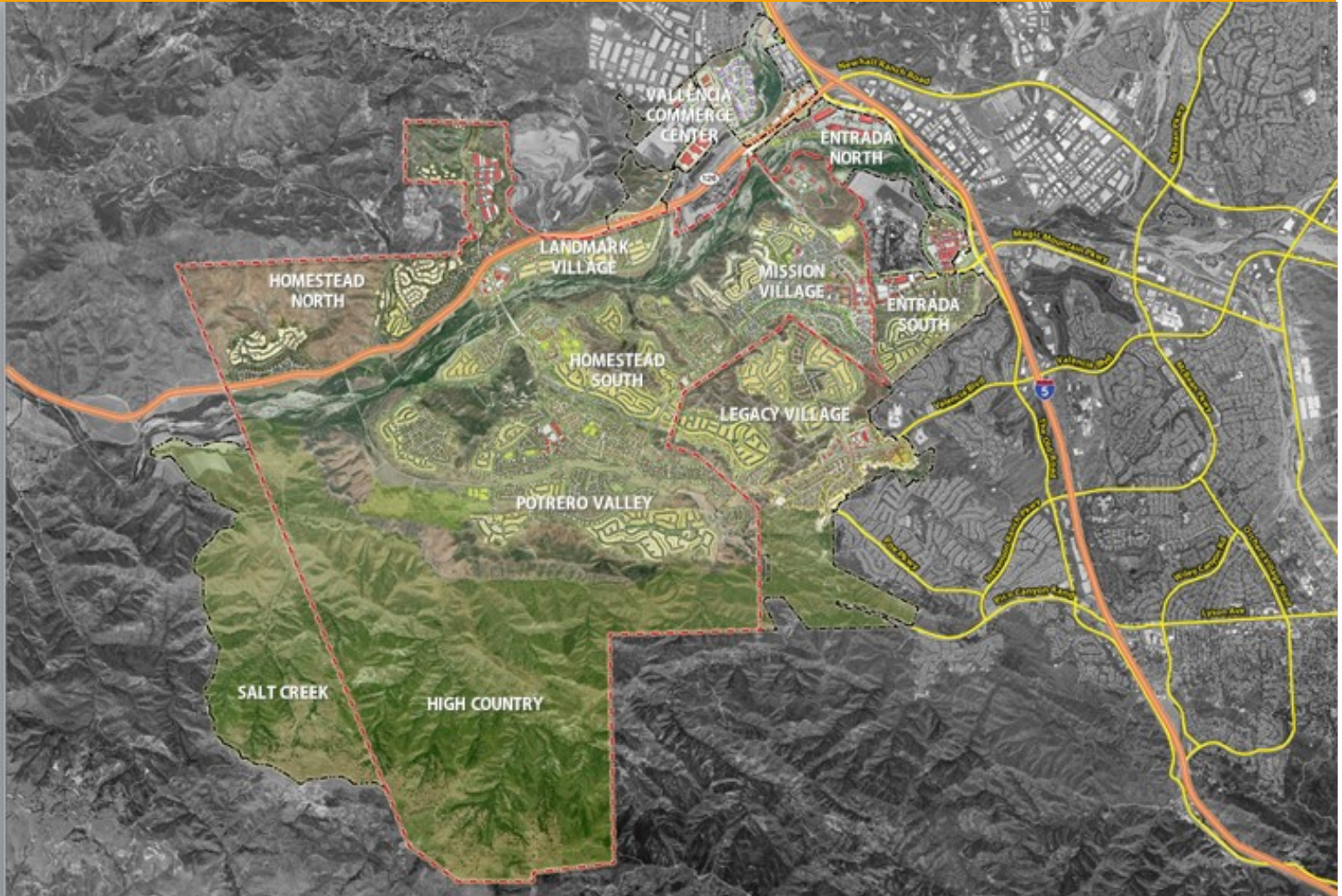


# SCV New Development | FivePoint Valencia



## FivePoint Valencia (Formerly Newhall Ranch)

Located in the Santa Clarita Valley, home to Los Angeles County's third-largest city, FivePoint Valencia will set a new standard of sustainability by protecting vast areas of open space for public use and reducing or mitigating net greenhouse gas emissions to zero. FivePoint Valencia will create 11.5 million square feet of job generating uses at buildout and generate thousands of permanent jobs, helping the SCV continue to thrive economically and allowing families to live close to their work.

- 21K+ homes
- 10K acres of open space and 50 miles of new trails
- 130K construction jobs
- 75K permanent jobs
- 11.5M SF of job generating uses
- \$12.7B total development investment
- \$1.8B in additional tax revenue each year

