

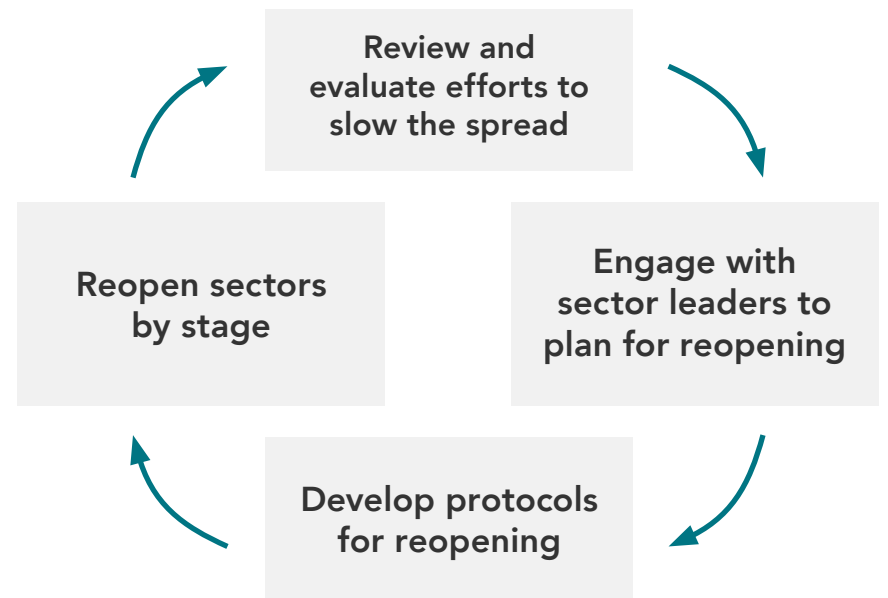
## A PHASED APPROACH TO REOPENING SAFELY IN LOS ANGELES COUNTY

Los Angeles County has worked together to slow the spread of COVID-19 by following the Safer at Home order. As we plan for recovery and the gradual relaxing of Safer at Home, we are sharing the Department of Public Health's Roadmap to Recovery. This provides goalposts for reopening as safely as possible.

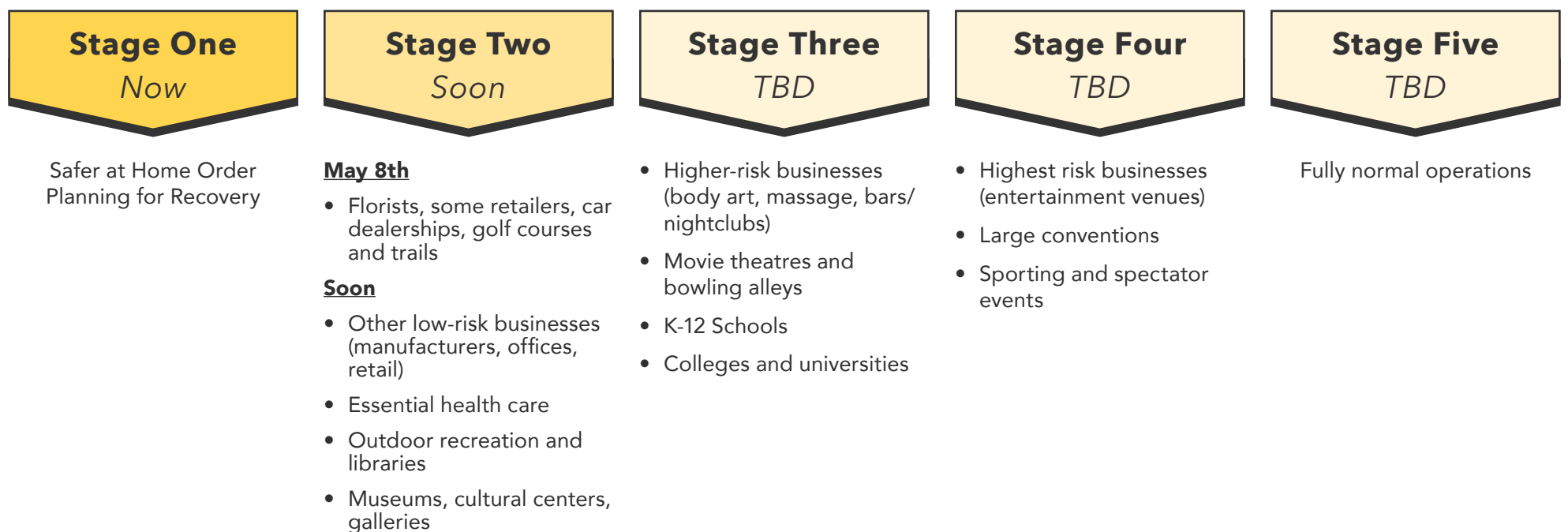
### Safeguards In Place Before Opening



### Process for Staged Reopening

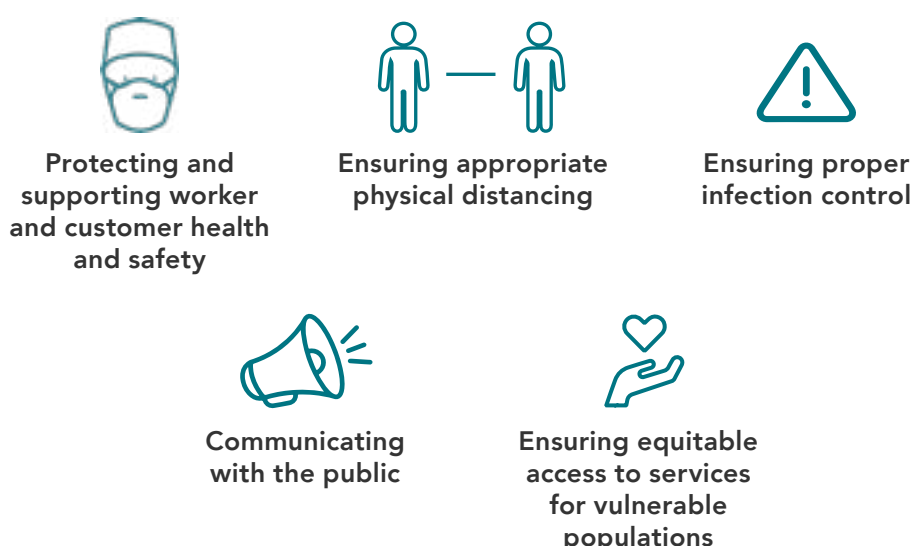


## Five-Stage Reopening Process Based On Risk



### Planning For Safe Reopening

Each sector will have a safe reopening guidelines that addresses the following areas of concern:



### Are We Slowing The Spread?

