



Qii.ai

# Qii Net

user manual V1.0

---



Intentionally Left Blank

# INTRODUCTION

---

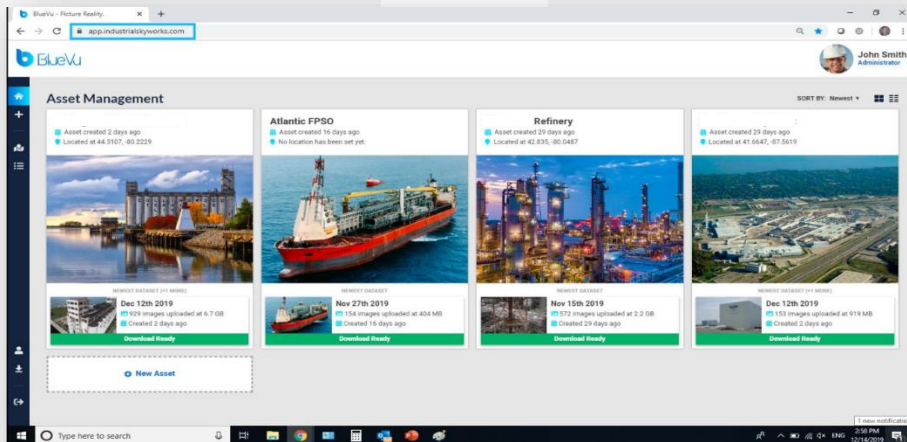
Qii Net is a web application that can be run through a browser. The goal of the application is to make inspections easier by harnessing the power of a digital twin. It allows you to navigate using the digital twin and review the high resolution photo. You can then mark up the anomaly and save this to the database. You can then automatically generate a report, share it or output a pdf.. Qii Net is part of family of applications including Qii Edge (desktop) and Qii Studio (portal).



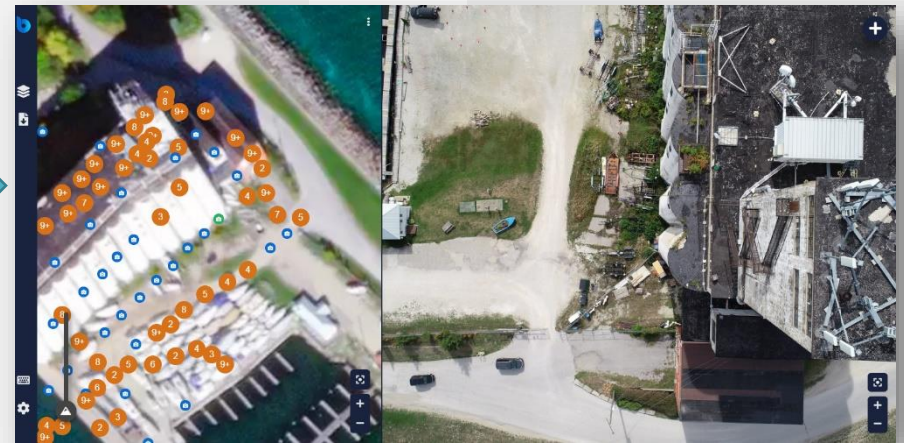
## KEY POINTS:

- No stitching of images, you work with the raw untouched images for your inspection work.
- You can quickly navigate large amounts of data either through a digital twin (3D model) or a map view
- Works with large datasets that create a Digital Twin or with a small number of pictures for a 2D view.
- Annotation is fast and easy
- In 3D annotations are marked not just on the 2D photo but in 3D space and are measurable.
- Class leading reports are generated automatically with a few simple clicks.
- Local servers can be set up, so your data never leaves the security of your companies' network.
- Works with Qii Studio for auto processing of data

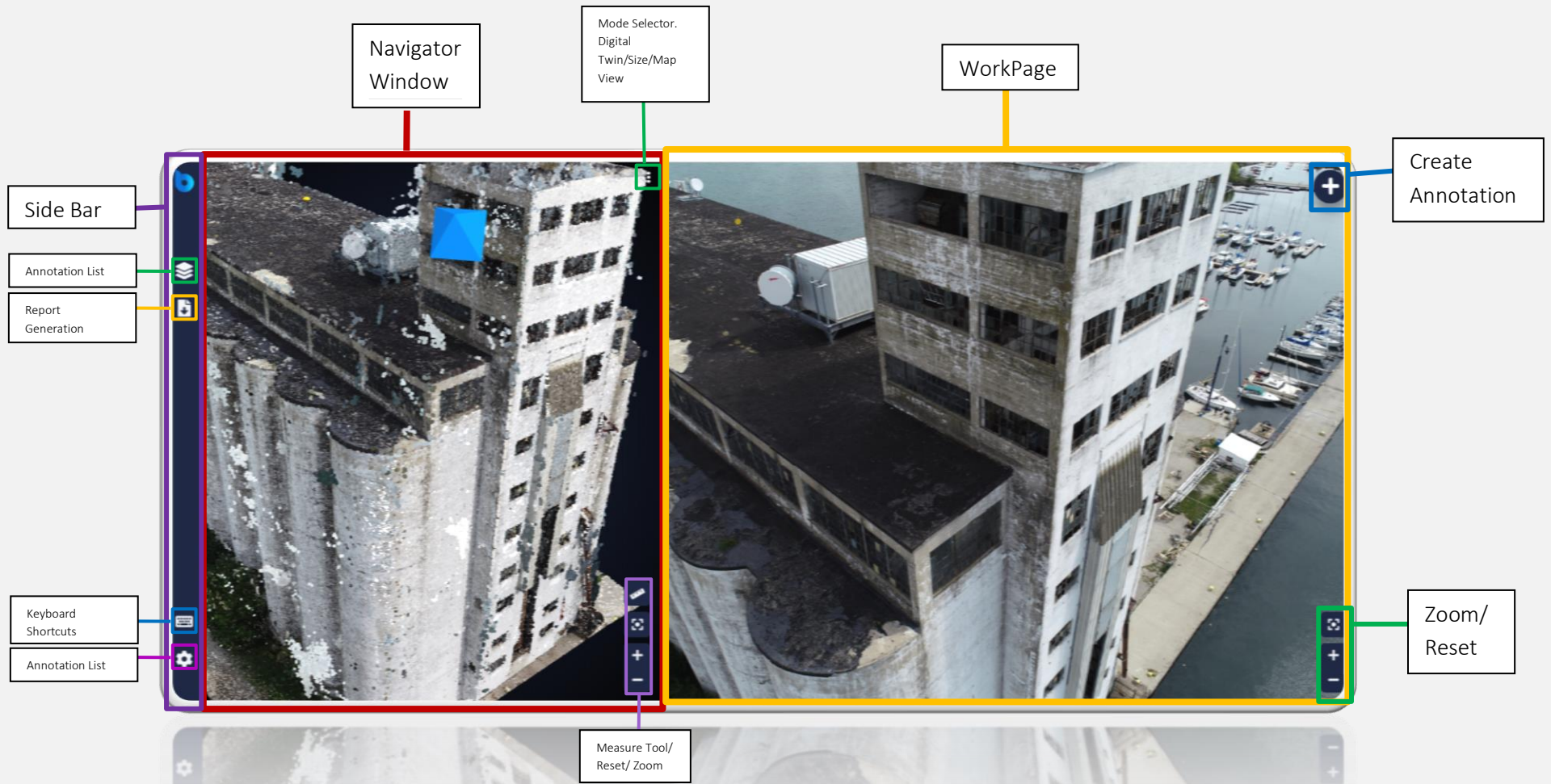
Qii Studio



Qii Net

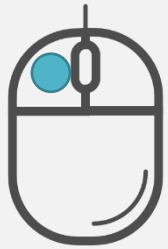


# LAYOUT



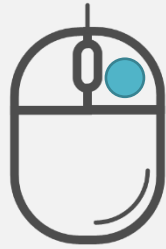
# CONTROLS

---

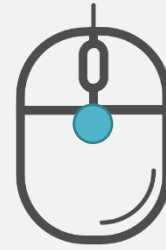


## NAVIGATOR WINDOW

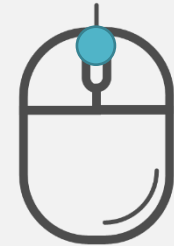
Rotate



Pan



Zoom



Zoom

## WORKSPACE WINDOW

(With Anomaly tab open)

Draw Rectangle box or

Polygon (with shift key)

Pan

N/A

Zoom

## SIDE BAR

---



**Annotations**



**Report Generation**

---



**Short Cut Menu**



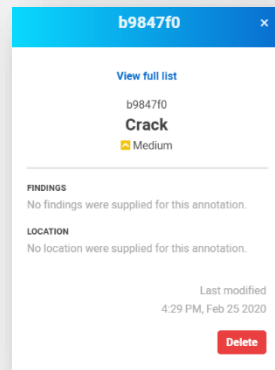
**Settings**

---

# ANNOTATIONS

Annotations				
Search for keywords				
<input type="checkbox"/>	Category	ID	Last Modified	
<input type="checkbox"/>	Coating breakdown	b6a152e	4 days ago	
<input type="checkbox"/>	Coating breakdown	1c593a4	5 days ago	
<input type="checkbox"/>	Wear and tear	d3db371	5 days ago	
<input type="checkbox"/>	Wear and tear	9c07881	5 days ago	
<input type="checkbox"/>	Staining	e938169	6 days ago	
<input type="checkbox"/>	Crack	3678116	7 days ago	
<input type="checkbox"/>	Crack	b9847f0	8 days ago	

This tab contains the list of annotations.  
 You can search the list using the search box.  
 You can sort the list by clicking on the name of each category.  
 You can select all or individually and delete them.  
 By Clicking on a Annotation you open up details on the annotation  
 The Workpage also opens the image where the annotation is made.





# REPORT TAB

**Report Generation**
✕

**Step 1 of 3 - Cover Page**

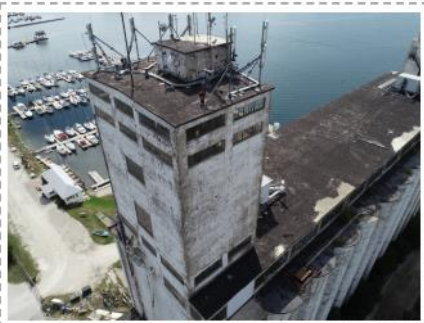
\* Report Title

Silo Building

Date Of Issue

03/03/2020

**COVER IMAGE**



\* COMPANY LOGO

This tab allows you to generate reports from the annotations you have created. You have several optional dialog boxes that can be filled in. You may optional chose to paste comments from a word processor.

- Report Title**                      Name of the report
- Date of Issue**                      Date of Report
- Cover Image**                      Picture for the front page of the report
- Company Logo**                      Company Logo (optional)
- Company Name**                      Company Name
- Company Address**                      Company Address
- Inspection Team**                      Inspection Gathering Team
- Reviewed By**                      Name of Report Inspector
- Approved By**                      Name of Supervisor

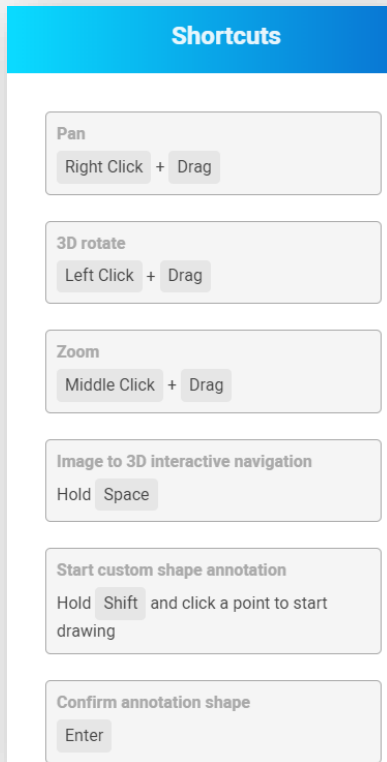
- Brief Summary**                      Overview of the Inspection purpose
- Statistics Chart**                      You can select Bar or Pie chart display
- Inspection Scope**                      Ground based or Aerial and overall Scope
- Reference Document**                      Reference of previous inspection document
- Inspection Limitations**                      Any limiting factors in the inspection gathering
- Weather**                      Weather conditions while data gathering

 **Preview Live Report**

Clicking on “Preview Live Report” Generates the report.



# SHORTCUTS



Shortcuts shows the keyboard shortcuts in using the software.  
Some shortcuts are modifiers and require the use of both mouse and keyboard.

## **Pan**

Right Click + Drag

## **3D rotate**

Left Click + Drag

## **Zoom**

Middle Click + Drag

## **Image to 3D digital twin interactive navigation**

Hold Space Bar, release to get photo.

## **Start custom shape annotation**

To create a polygon Hold the shift key

## **Confirm annotation shape**

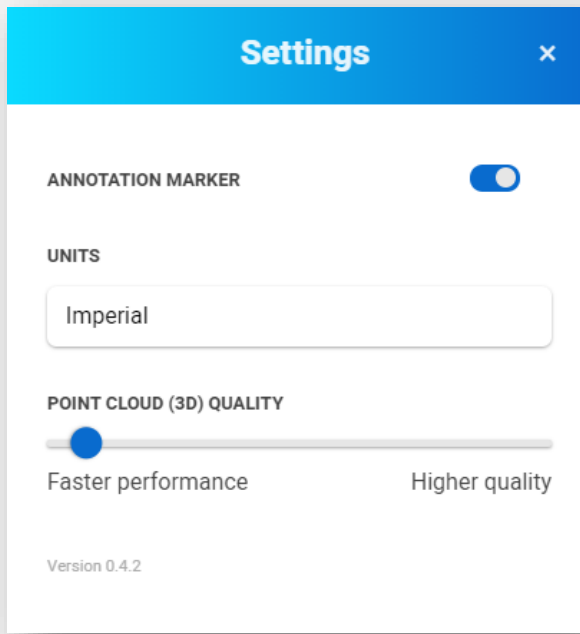
Enter Key

## **Cancel annotation shape**

Esc Key



# SETTINGS TAB



## Annotation Marker

Turns On or Off the marker on the digital twin

## Units

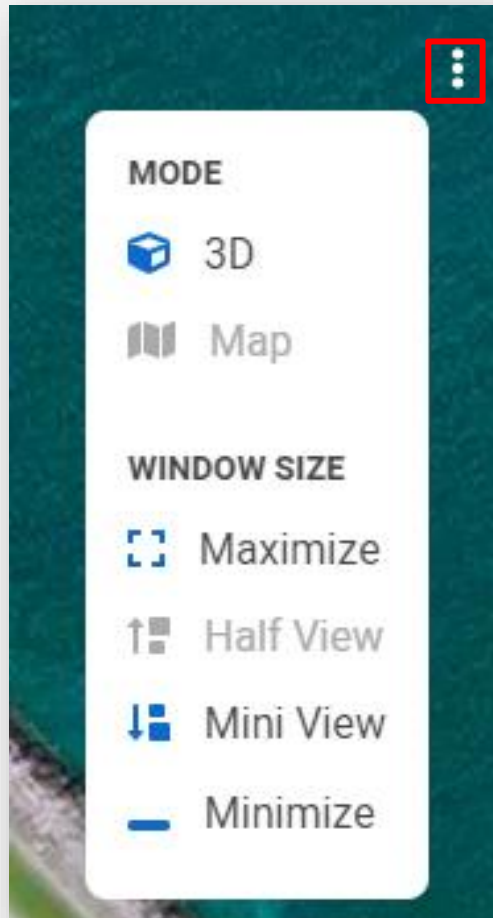
Metric or Imperial

## Point Cloud Quality

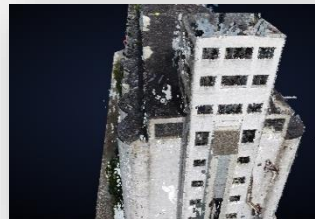
If you are working with a slow internet, you can adjust this for faster performance, the trade off is the digital twin will be in lower resolution.



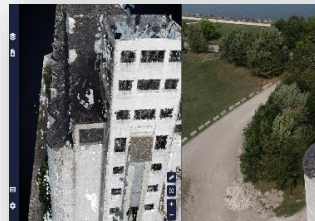
# MODE SELECTION



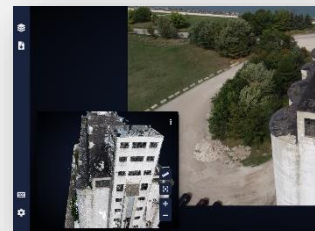
Opening the Mode Selection allows you to switch the Navigator window to different view points.



Maximize View gives the whole screen to the digital twin

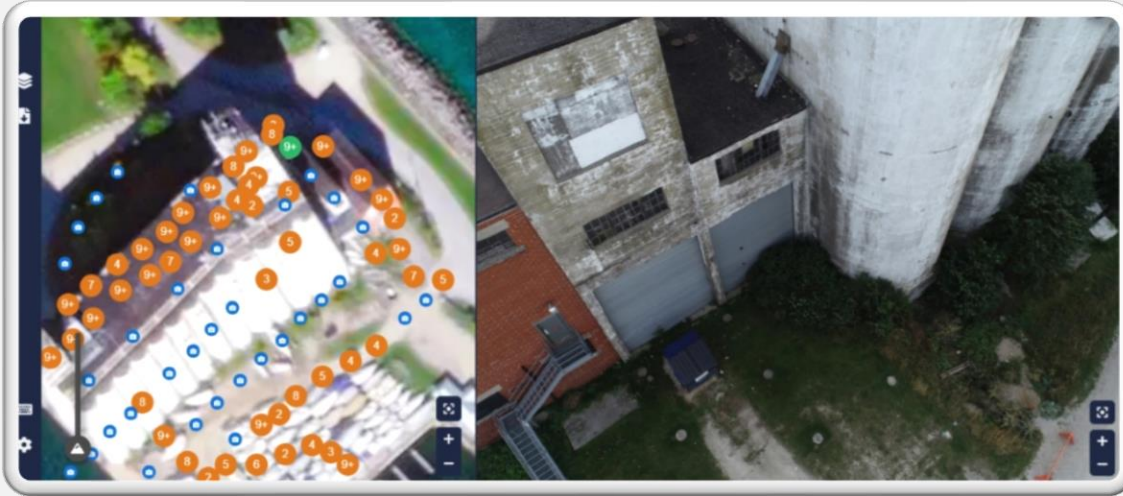


Half View Splits the screen between digital twin and Workpage

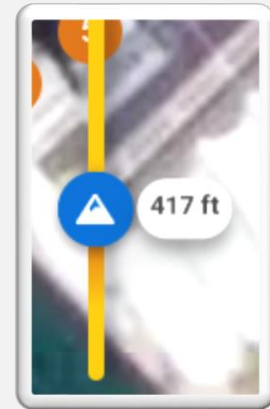


Mini View Shrinks the Navigator Window. Allowing more visibility in the WorkPage.  
Minimize removes the Digital twin window completely

# MAP VIEW



**Height Filter**  
You can filter the photo locations by altitude. Slide the marker up or down to show cameras at that altitude. Slide the icon to the bottom to show all the cameras



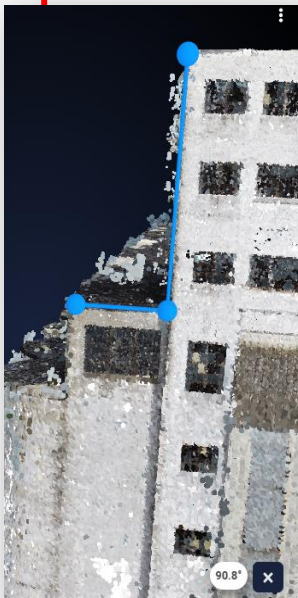
By Selecting map view you are given a top down view of all the camera positions.

Blue Icons represent individual camera positions. Clicking them brings up the image taken at that location.

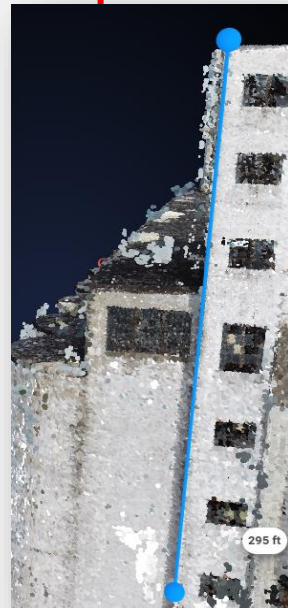
Orange icons represent several photos taken at that location. Repeat clicking on the icon goes through All the photos at that location.

# MEASURE TOOL

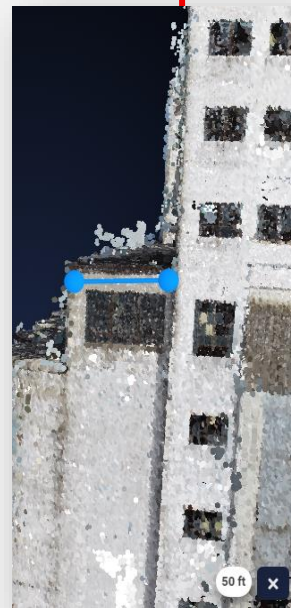
Measure Angle between  
3 points



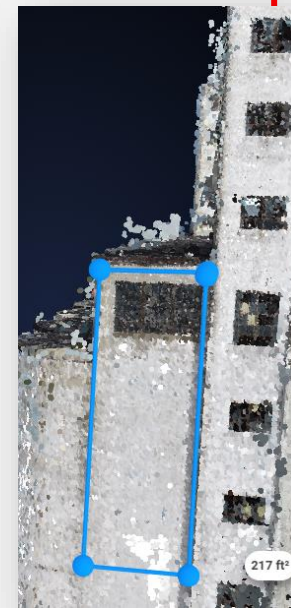
Measure vertical Height



Measure horizontal distance



Measure Area



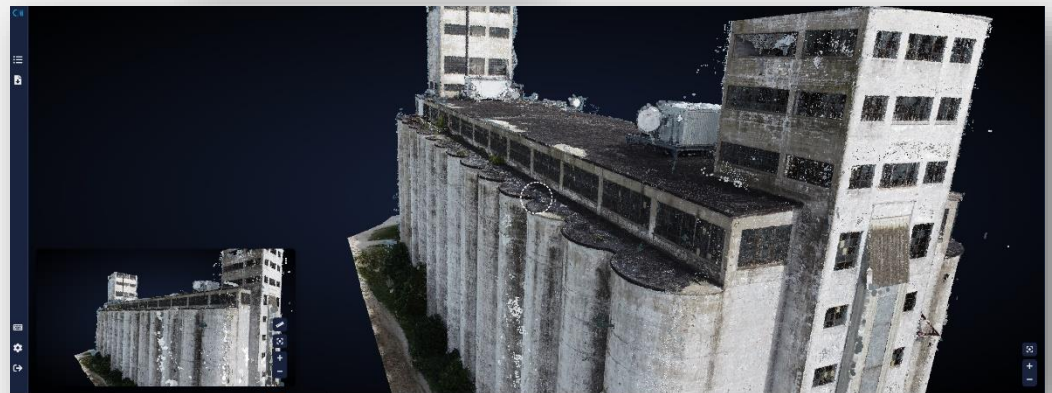
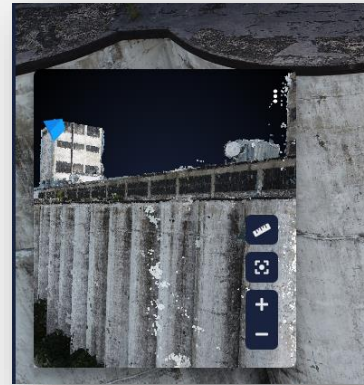
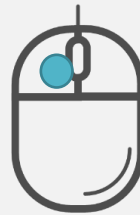
In Settings you can switch to Metric or Imperial units

# WORKFLOW

To Create an inspection you must first identify an anomaly.

Using the Digital twin you can rotate it to find the area to inspect



Click on the digital twin to look at the 2D photo of that area



Using space Bar and mouse you can quickly convert the 2D Workpage image into

The 3D digital twin, by releasing the space bar the nearest matching 2D Image is found.

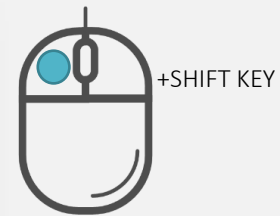
This is a quick and effective way of fine tuning where you are looking.

Use the  icon to open the annotation window. Icon will change to 

Use the left mouse button to draw a rectangle around the anomaly



Or hold down shift key if you want to create a polygon shape

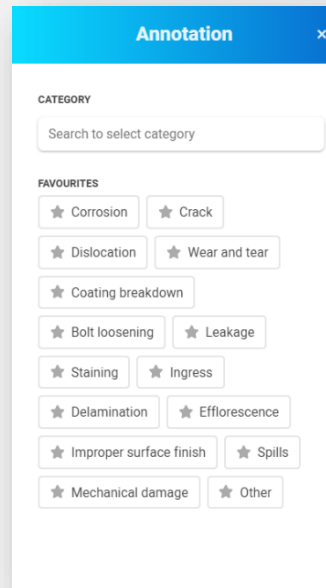


In Polygon mode you can confirm shape,(you can do just a line without closing the polygon) undo and redo points or Close the polygon using the icon (or snap the beginning and end Point together).





On the Left hand side select the type of anomaly  
You can favourite commonly used ones by clicking  
On the star, this puts them at the top of the list.



**Annotation** ✕

CATEGORY

Search to select category

FAVOURITES

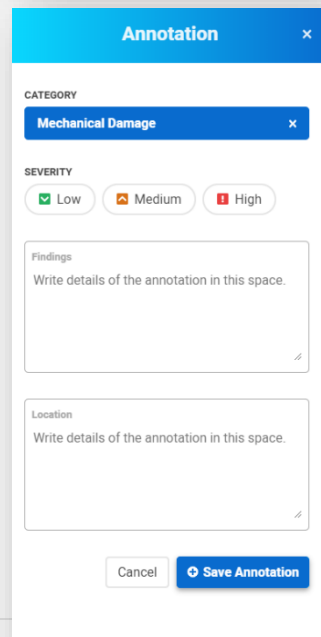
- ★ Corrosion
- ★ Crack
- ★ Dislocation
- ★ Wear and tear
- ★ Coating breakdown
- ★ Bolt loosening
- ★ Leakage
- ★ Staining
- ★ Ingress
- ★ Delamination
- ★ Efflorescence
- ★ Improper surface finish
- ★ Spills
- ★ Mechanical damage
- ★ Other

Once the type of anomaly is selected you must select  
The severity. You can choose between Low/Med/High

You may also choose to make notes about what the  
Problem is, and where it was found. These are optional.

When done click Save Annotation.

This will leave the colour coded box on the Workpage  
and (if selected in settings) a 3D marker on the digital  
twin.



**Annotation** ✕

CATEGORY

Mechanical Damage ✕

SEVERITY

Low  Medium  High

Findings

Write details of the annotation in this space.

Location

Write details of the annotation in this space.

Cancel Save Annotation

Ver 1.0