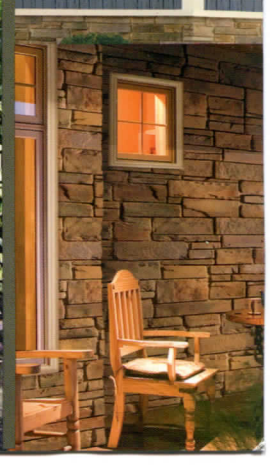




Exceptional design. Enduring appeal.

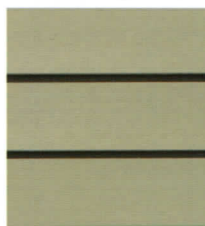
**CRANEBOARD**  
SOLID CORE SIDING®



exterior  
PORTFOLIO

by CRANE

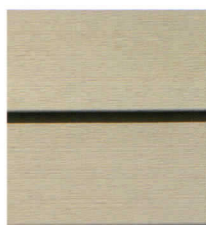




Clean styling makes an extraordinary statement.

Give your home a classic, crisp-looking exterior with **CraneBoard® 6**. It's the 21st century version of a time-tested surface that works in beautiful harmony with accents of stone, shake and board and batten, or can be used to cover an entire façade with smooth integrity. The triple-width, insulated span bridges structural imperfections for a flawless appearance. The milled cedargrain texture, straight face and deep shadows of the 6" profile give your house a solid, authentic presence.





## Beauty meets versatility.

The 7" clapboard plank is the tried-and-true choice for an infinite variety of architectural styles.

From the traditional Colonial to the most groundbreaking Contemporary design, **CraneBoard® 7** can be used as both a starting point and an exciting accent. Its expansive, architecturally correct width combines with a perfectly straight, deeply shadowed shape, and hand-milled cedar finish. Add to this design superiority a selection of 17 expressive colors, and it's a distinctive option for any home.





## Elements that add immeasurable impact.

Architecture has rhythm and flow. Adding the charm and dimension of rustic, cedargrain **CraneBoard® Board & Batten** to a conventional façade offers a lively change in tempo. It can be the influential element of a number of popular homes styles, from Craftsman to Contemporary. In addition to its exceptional weather resistance and energy savings, as an accent or a theme, CraneBoard Board & Batten brings vitality and interest to design.

## Window & Door Trim



5" and 3.5" Window Lineal



Window Crown Molding



Windowsill Lineal



Integral Window and Door Trim

Window Crown Molding, Windowsill Lineal, and Integral Window and Door Trim are only available in Aspen White.

## Corners

For a decorative 3-piece corner system, combine the corner connector with any of the window styles.

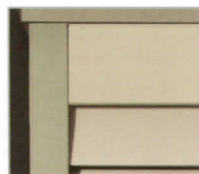


3-Piece Corner System



5.5" Corner Post

## Decorative Trim



Finish Board



Crown Molding



Batten Mold Trim

## Accents to make your home complete.

Distinctive finishing details give a home a final touch of craftsmanship. Depending on the effect you're going for, they can provide clean contrast or matching harmony. **Architectural Essentials™ Accessories** give you a wide selection of architectural accents, from a graceful fluted lineal and a decorative three-piece corner post system to stately crown molding. Most Architectural Essentials Accessories are available in the same gorgeous color options as CraneBoard®. All are engineered to fit smoothly with any CraneBoard design style you choose.



Harbor Blue



Aspen White



Wheat



Mocha



Driftwood



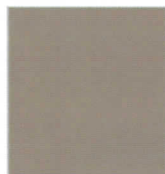
Pearl



Country Beige



Rye



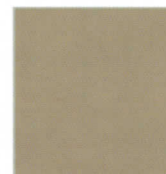
Greystone



Bone



Saddle



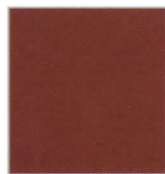
Clay



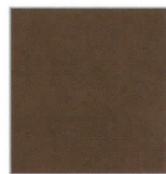
Cypress



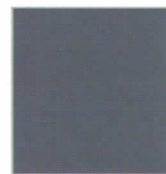
**COASTAL SHORES™**  
COLLECTION



Lighthouse Red



Cabin



Regatta

CraneBoard 6, CraneBoard 7 and CraneBoard Board & Batten available in all 17 colors. Architectural Essentials Accessories are available in up to 17 colors depending on the product style.



ColorLife™ Fade Defense is an advanced color protection formula that utilizes BASF's Luran S technology to keep siding color fresh and true for the life of the home.



When correctly installed, SOLID CORE SIDING can help meet the performance guidelines of an ENERGY STAR qualified new home.



Exterior Portfolio® by Crane is more than beautiful, long lasting exterior products for your home. We believe in a sustainable future for everyone. For you, this means a home made from environmentally preferred materials. For us, it means cladding products offering benefits such as durability and low maintenance. All of our products provide a long service life that requires no harmful finishes. Because our commitment to the environment stretches from our home to yours, we engineer sustainable benefits into our product development process through innovations such as our SmartTrack™ moisture management system and our energy-saving, Solid CORE™ insulation. To learn more, please visit [www.exteriorportfolio.com](http://www.exteriorportfolio.com).

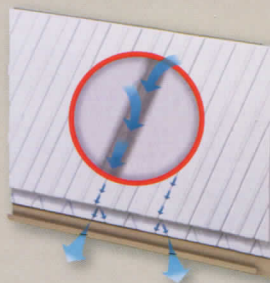


CraneBoard® 6 and 7 are engineered with SOLID CORE™ insulation that gives your home all the performance advantages of **SmartCORE™** intelligent design.

## SmartTRACK™ System



Our **SmartCORE™** Insulation breathes naturally... moisture vapor evaporates as it passes through the panel. Specially designed **SmartTrack** ridges create an air space for ventilation, allowing moisture to evaporate.



Any excess moisture is guided out through **SmartTrack** engineered channels. **SmartTrack** creates the ultimate moisture management system.

CraneBoard® Performance Features	CB 6	CB 7	Board & Batten	AE
Authentic hand-milled cedargrain beauty	•	•	•	
Natural, smooth look and feel				•
Smooth interlocking edges keep seams tight for a continuous look	•	•	•	
No painting. No scraping. True Maintenance Freedom!	•	•	•	•
R-Value	up to 4.0	up to 4.0	2.6	up to 4.0
<b>SmartCORE™</b> Insulation engineered to breathe and keep moisture out	•	•	•	•
240% more impact resistant than fiber cement	•	•	•	•
Quiet! Reduces noise up to 45%	•	•	•	•
Wind resistance	up to 200 mph	up to 200 mph	up to 150 mph	
Available colors	17	17	17	colors vary by style
No-Nonsense Life-of-the-Home Warranty	•	•	•	•



This NAHB Research **Center Green Approved** mark is your assurance that a product is eligible for points toward National Green Building Certification. Visit [www.GreenApprovedProducts.com](http://www.GreenApprovedProducts.com) for more details.

For more information  
and design inspiration, visit  
[www.ExteriorPortfolio.com](http://www.ExteriorPortfolio.com)

**CRANEBOARD®**  
SOLID CORE SIDING™

**Exterior Portfolio® by Crane**  
1441 Universal Road  
PO Box 1058  
Columbus, OH 43216  
800.366.8472



**exterior**  
**PORTFOLIO**  
by CRANE

**Think outside.**



**Crane**  
Building Products™



© 2010 Exterior Portfolio® by Crane.