



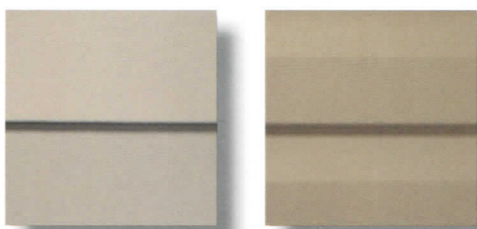
Unprecedented design for homes of distinction.

PREMIUM POINTE® 360



exterior
PORTFOLIO

by CRANE



Give your home a remarkably refined effect.

Premium Pointe® 360 will give your home the prestigious presentation it craves. Available in Double 4" and Double 4.5" Dutchlap profiles, its tasteful textures and handsome hues combine to produce a stunning exterior silhouette. With its unequalled quality, pronounced performance advantages and alluring appearance, you'll feel confident choosing Premium Pointe 360.

Window & Door Trim



5" and 3.5" Window Lineal



Window Crown Molding



Windowsill Lineal

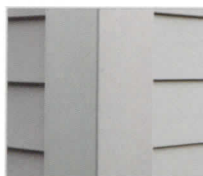
Window Crown Molding and Windowsill Lineal are only available in Aspen White.

Corners

For a decorative 3-piece corner system, combine the corner connector with any of the window styles.



3-Piece Corner System



5.5" Corner Post

Decorative Trim



Finish Board



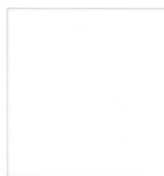
Crown Molding

Accents to make your home complete.

Architectural Essentials™ are the decorative window and corner systems, trim boards, crown moldings and other details that pull your entire exterior together. Made to match the aesthetics, quality and efficiency of Exterior Portfolio® by Crane, its attractive, soft-brushed finish looks like real painted wood trim. Architectural Essentials cover every area of your home, providing the perfect final touch. Most Architectural Essentials Accessories are available in the same gorgeous color options as Premium Pointe 360. All are engineered to fit smoothly with any Premium Pointe 360 design style you choose.



Harbor Blue



Aspen White



Wheat



Mocha



Driftwood



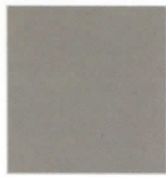
Pearl



Country Beige



Rye



Greystone



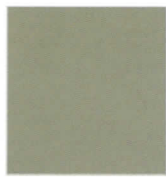
Bone



Saddle



Clay



Cypress



Ivory



ColorLife™ Fade Defense is an advanced color protection formula that utilizes BASF's Luran S technology to keep siding color fresh and true for the life of the home.



Exterior Portfolio® by Crane is more than beautiful, long lasting exterior products for your home. We believe in a sustainable future for everyone. For you, this means a home made from environmentally preferred materials. For us, it means cladding products offering benefits such as durability and low maintenance. All of our products provide a long service life that requires no harmful finishes. Because our commitment to the environment stretches from our home to yours, we engineer sustainable benefits into our product development process through innovations such as our **SmartTRACK™** moisture management system and our energy-saving, **SOLID CORE™** insulation. To learn more, please visit www.exteriorportfolio.com.

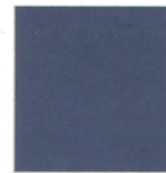
COASTAL SHORES™ COLLECTION



Lighthouse Red



Cabin



Regatta



Evergreen

Premium Pointe 360 Double 4" and Double 4.5" Dutchlap are available in all 18 colors listed above.

Architectural Essentials™ Accessories are available in up to 17 colors depending on the product style.

A legacy of integrity.

For three generations, the Crane family has been in the business of making quality siding products. The Crane heritage is grounded in the American tradition of hard work, pleasure in craftsmanship, and satisfaction in a job well done. Today, Crane is a category leader in innovation and is committed to sustainability, resulting in beautiful, durable products you can depend on and be proud of.

For more design inspiration, visit
www.ExteriorPortfolio.com

For more product information, visit
www.CraneSiding.com

PREMIUM POINTE® 360

Exterior Portfolio® by Crane

1441 Universal Road
PO Box 1058
Columbus, OH 43216
800.366.8472

© 2009 Exterior Portfolio® by Crane.

Premium Pointe® 360 Performance Features



True-milled finish makes an impressive statement



No Painting. No Scraping. True Maintenance Freedom!



Extra thick .092" full rollover HurriCrane® nailing hem provides 200 mph windload performance



HurriCrane® locking system is engineered for strength and stability



Full 3/4" profile edge assures straight walls



Extra-long 16' panels mean up to 33% fewer seams



.046" nominal thickness



Available in 18 colors



Lifetime Limited Warranty



exterior
PORTFOLIO

by CRANE

Think outside.



Crane
Building Products®

