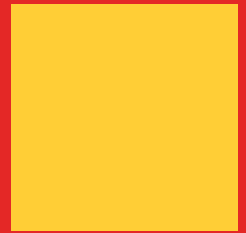


February 2019



coerco
mining & industrial



Engineered
Project Solutions



Consult | Design | Engineer | Deliver



Contents

Company Profile	3
Water Tanks	4
Tank Fittings and Accessories	9
Drilling	11
Industrial Process Tanks	12
Liquid Transportation and Dust Suppression	19
Fire Fighting & Washdown Equipment	24
Diesel Transport Products	28
Trailer Equipment Accessories	33
Septic Systems	34
Under Cabin Tanks	37
Portable Pressure Tank Systems	39
Hose and Cable Floats	40
Pontoons and Floating Walkways	41
Pump Pits	44
Lift Stations	44
Industrial Pump Accessories	45



Company Profile

COERCO is a leading broad-based Australian manufacturer, providing complete design, engineering and manufacturing solutions for poly based products throughout a wide range of industries, across the globe.

The company was born in 1994 to service a vastly unsupported market, with a niche for extensive customer service. Now with decades of experience and extensive facilities throughout Australia, COERCO is truly the leader in the market for engineered poly based products.

COERCO (Formerly Rapid Plastics) has been supplying Western Australia for almost twenty-five years with a range of innovative products designed to meet the needs of agricultural, industrial and domestic markets. With this experience and expertise, the company has seen exponential growth and market diversification, both nationally and internationally.

With a diverse range of standard products, COERCO can provide solutions for a wide spectrum of applications including water and chemical storage, liquid cartage, firefighting protection equipment, diesel fuel storage and transport, pumping operations and septic waste tank systems.

COERCO provides mining and heavy industrial markets with project solutions, from small custom products right through to complete turnkey packages. These include, potable water storage, chemical and process tanks, hose and pipe floats, pump pontoons, floating walkway, gangways, fluid transfer equipment through to custom HDPE products.

Our products can be found in all corners of the globe and form part of the world's largest resource projects, including Wheatstone LNG, Roy Hill Iron Ore, Exxon Mobil's PNG LNG, Grand Côte Operation, Ichthys LNG and various FMG, Rio Tinto, BHP sites.

COERCO is proud to support local industry and are wholly Australian owned. With the goal of ultimate satisfaction in view, all our products are made in Australia, and along with our facilities and processes, are internationally certified to ISO9001:2015.

We would like to assure you that we endeavor and strive diligently to provide the commitment and stability that you deserve throughout your dealings with COERCO. Our customers mean everything to us!

Premium Corrugated Tanks

Water Tanks



Features

- One piece construction
- Attractive Heritage design
- Corrugated for strength and traditional appearance
- UV stabilised to withstand our harsh climate
- Durable and impact resistant polyethylene for long life
- Self supporting lid design eliminates need for centre support pole
- Available in all colours (see colour chart on page 10)

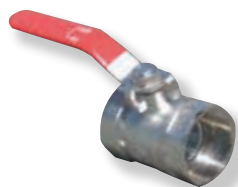
Premium Corrugated Tanks

Code	Capacity Litres	Capacity Gallons	Diameter	Wall Height	Total Height	Overflow Position
RT1000	1000	220	1000	1300	1500	3,6,9 or 12
RT2500	2500	550	1400	1750	2000	3,6,9 or 12
RT2500S	2500	550	1850	950	1240	3,6,9 or 12
RT3500	3500	750	1600	1800	2100	3,6,9 or 12
RT4500	4500	1000	1850	1800	2100	3,6,9 or 12
RT4500S	4500	1000	2400	1050	1400	3,6,9 or 12
RT9000S	9000	2000	2950	1400	1800	3,6,9 or 12
RT9500	9500	2100	2600	1800	2150	3,6,9 or 12
RT13500	13500	3000	2950	1900	2300	3,6,9 or 12
RT22500	22500	5000	3550	2350	2950	3,6,9 or 12
RT32000	32000	7000	3950	2450	3100	3,6,9 or 12
RT45000	45000	10000	Tank Combination (2 x RT22500) Tank Combination (2 x RT32000)			
RT64000	64000	14000				

Please note Tank sizes may vary between States and Territories in Australia



**PVC Mesh
Overflow**



Ball Valve



**Twist Lock Manhole
Cover**



Brass Outlet

Tank Ordering Check List:

1. Dimensions of rainwater tank?
2. Fittings supplied with tank?
3. Position of fittings?
4. Selected tank colour?
5. Other accessories required?
6. Clearance available at property (large tanks only)?
7. Clear directions for truck driver (large tanks only)?
8. Specified ideal time frame for requiring tank?

Optional Extra's



Brass Inlet



**Leaf Strainer
& Cover**

Premium Flat Walled Tanks

Water Tanks



Features

- One piece construction
- Sturdy, Reliable and built to last
- UV Stabilised to withstand our harsh climate
- Supplied with screw in lid, overflow, outlet and ball valve
- Self supporting lid design
- Manufactured in guidance with Australian standards
- Available all colours (see colour chart on page 10)

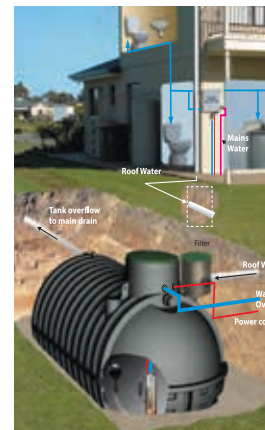
Premium Flat Walled Tanks

Code	Capacity		Diameter	Wall Height	Total Height
	Litres	Gallons			
JRR5300	5300	1170	1800	2000	2150
JRR10500	10500	2300	2495	2400	2450
JRR14000	14000	3100	2495	3000	3100
JRR25000	25000	5500	3950	1950	2590
JRR28000	28000	6100	3950	2000	2420
JRR30000	30000	6600	3500	3030	3500
JRR50000	50000	11100	4600	2900	3450

Please note Tank sizes may vary between States and Territories in Australia

Underground Water Storage Tanks

Water Tanks



URT3500



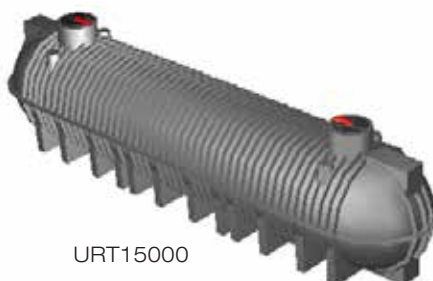
URT4000



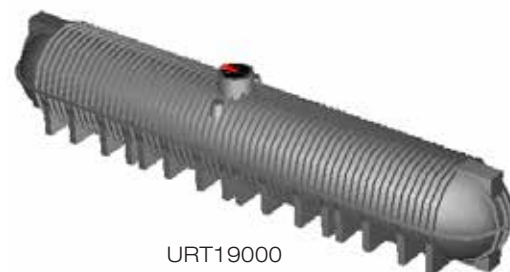
URT7000



URT11000



URT15000



URT19000



URT23000

Product images are a close guide only and may not represent actual product

"Under Site - Out of Mind"

Features:

- Fully tested one piece tough poly tank
- Sealed lid reduces the possibility of anyone falling into tank
- Pump options available

Underground Water Storage Tanks

Code	Description
URT3500	3500 Litre Underground Tank including lid
URT4000	4000 Litre Underground Tank including lid
URT7000	7000 Litre Underground Tank including lid
URT11000	11,000 Litre Underground Tank including lid
URT15000	15,000 Litre Underground Tank including lid
URT19000	19,000 Litre Underground Tank including lid
URT23000	23,000 Litre Underground Tank including lid
URT31000	31,000 Litre Underground Tank including lid

Tank Fittings and Accessories

Tank Fittings and Accessories



Tank Tie Down Kit

Features

- Secure your tank easily to anchor points
- Provides peace of mind for high wind areas
- Available as certified for cyclonic conditions

Tank Tie Down Kits

Code	Description
TTK-01	Tank tie down kit - not certified for cyclonic regions
TTK-02	Tank tie down kit - includes 3x lashings rated for cyclonic regions (suits tanks up to 32,000ltrs)
TTK-03	Tank tie down kit - includes 4x lashings rated for cyclonic regions RHS tie down products (suits JRR50,000 tank)



Tank Tie Down Block

Features

- Ideal for the tie down of tanks
- Integrated galvanised threads and/or ferrules.
- Heavily reinforced to meet cyclonic zones & engineer approval.
- Swiftlifters/fork pockets cast-in for ease of placement.

Tank Tie Down Block

Code	Description
TTB-2500	2.5T Concrete Tie Down Block (1000mm x 1000mm x 1000mm)

Tank Fittings and Accessories

Tank Fittings and Accessories



Dipstick (TAL-7)

- Out of reach of animals
- 360° all round visibility
- Great for 'Cup & Saucer' Tanks



Liquidator (TAL-10)

- Ideal for chemical tanks, only the float is in contact with liquid
- Captive guided indicator, isn't bothered by wind or other disturbances

Tank Level Gauges

Code	Description
TAL-7	"Dip-stick" tank level gauge
TAL-10	"Liquidator" tank level gauge



Poly Tank Fittings

- Available in 6 sizes
- Manufactured from UV Stabilised Glass Fibre Reinforced Nylon giving a weather, termite, fungi and bacterial resistance



Brass Tank Fittings

- Brass tank fittings have internal & external threads (25-50mm)
- Locking nut is left hand thread for secure fit. Doesnt come loose when fitting valves etc

Tank Fittings

Code	Description
COMP-19-02	25mm (1") Poly Fitting
COMP-19-03	32mm (1 1/4") Poly Fitting
COMP-19-04	40mm (1 1/2") Poly Fitting
COMP-19-05	50mm (2") Poly Fitting
COMP-19-06	80mm (3") Poly Fitting
COMP-19-07	100mm (4") Poly Fitting
COMP-01-01	25mm (1") Brass Fitting
COMP-01-02	32mm (1 1/4") Brass Fitting
COMP-01-03	40mm (1 1/2") Brass Fitting
COMP-01-04	50mm (2") Brass Fitting
COMP-01-05	80mm (3") Brass Fitting
COMP-01-06	100mm (4") Brass Fitting

Potable Water Storage Tanks

Water Tanks

Coerco poly water tanks are designed and manufactured under strict control to ensure they are suitable for drinking quality and fully UV stabilised in all colours to survive our harsh climate.

Our tanks are manufactured using the best linear low density food grade polyethylene and in guidance with the following standards:

- AS/NZS 4766(INT) Polyethylene storage tanks for water and chemicals
- AS/NZS 4020:2002 Aust. Std. for drinking water
- AS 2070 Part 1 & Part 8 Aust. Std. for food contact

All Coerco's tanks incorporate a self-supporting roof design which have been designed and tested and have proven to be the strongest and most durable. No internal support is needed in any size tank.



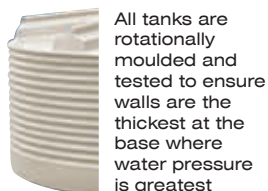
Twistlock manhole cover



PVC Mesh Overflow



Solid brass threaded outlet fitting



All tanks are rotationally moulded and tested to ensure walls are the thickest at the base where water pressure is greatest



Moulded lifting lugs



Ball Valve



An important feature of Coerco tanks is **one piece construction** roof and walls are moulded as one with no joins seams or parts lines down the walls. At no stage is the roof cut off and screwed back on.

Standard Tank Colours



Mist Green
(Pale Eucalypt[®])



Wheat
(Harvest[®])



Heritage Green
(Cottage Green[®])



Mountain Blue
(Deep Ocean[®])



Slate Grey
(Woodland Grey[®])



Rivergum
(Wilderness[®])



Beige



Smooth Cream
(Classic Cream[™])



Heritage Red
(Manor Red[®])



Merino
(Paperbark[®])



Torris Blue



Black
(Night Sky[™])

Optional COLORBOND[®] colours are available but may be subject to surcharge and/or delivery delay. Due to printing differences, some colours may vary. COLORBOND[®] and colour names are registered trademarks of Blue Scope Steel Ltd. [™]Colour names are trademarks of Blue Scope Steel Ltd. Coerco colours represented match COLORBOND[®] steel colours.

Mud Tubs

Drilling



Mud Tubs

Code	Description
MT1500	1500 Litre Mud Tub (2000D X 650H)
MT2000	2000 Litre Mud Tub (2300D X 650H)
MT3000	3000 Litre Mud Tub (2300D X 950H)

Features

Durable, lightweight poly tubs ideal for drilling and mining situations where on site mud water storage is required whilst still being able to transport easily.

- Tough polyethylene construction
- Various capacities available
- Light enough to man handle



Cone Based Process Tank Systems

Industrial Process Tanks



Cone Based Process Tank Systems

Code	Description
ITCB5000S	Stand (Galvanised) To Suit 5,000 Litre (1,110 Gallon) Chemical Industrial Storage Tank - Cone Base
ITCB5000RT	5,000 Litre (1,110 Gallon) Chemical Industrial Storage Tank (Bare) - Cone Base/Closed Roof Top
ITCB5000GT	5,000 Litre (1,110 Gallon) Chemical Industrial Storage Tank (Bare) - Cone Base/Open Gutter Top
ITCB12000GT	12,000 Litre (2,600 Gallon) Chemical Industrial Storage Tank (Bare) - Cone Base/Open Gutter Top
ITCB12000S	Stand (Galvanised) To Suit 12,000 Litre (2,600 Gallon) Chemical Industrial Storage Tank - Cone Base
ITCB27000	27,500 Litre (6000 Gallon) Chemical Industrial Storage Tank - Cone Base
ITCB27000S	Stand (Galvanized) To Suit 27,000 Litre (6,000 Gallon) Chemical

Please note Tank sizes may vary between States and Territories in Australia

Features

Ideal for mixing or batching liquid solutions, the cone base option offers complete drainage. Great for dosing of Bio Diesel and also pre-mixing of liquid or granular chemicals.

Available with custom fittings, pipework and agitators. These units can be designed to meet any requirements.

Common uses;

- Chemical Mixing/Agitation
- Bio-diesel Processing
- Trace Element Mixing



Heavy Duty Industrial Process Tanks

Industrial Process Tanks



Coerco heavy duty purpose “IT Tank Range” are specifically manufactured heavier for any industrial situation.



Features

- High Density Polyethylene (HDPE) fittings for all applications including inlets, outlets, anti-vortex and overflow fittings
- Electrofusion welded fittings to suit pipework of all sizes
- Content level gauge to enable safer, easier tank level sightings.
- Safety ladders and railwork built to enable easier, quicker and safer access to tank hatch.
- Available in chemical related colours for easy identification.
- Any ball/gate valves, float valves, fittings and pipework to suit your requirements
- Available as insulated units for increased liquid content temperature efficiency and stability.



Typical Applications:

- Mining Industry
- Waste Water Treatment
- Fire System Back Up Storage
- Storing Liquid Fertiliser
- Chemical Manufacturing
- Concrete batching plants
- Processing



Heavy Duty Industrial Process Tanks

Industrial Process Tanks

Heavy Duty Industrial Process Tanks

Code	Description
IT10001.3	1,000 Litre (220 gallon) chemical industrial storage tank @ sg = 1.3
IT25001.3	2,500 Litre (550 gallon) chemical industrial storage tank @ sg = 1.3
IT35001.3	3,500 Litre (750 gallon) chemical industrial storage tank @ sg = 1.3
IT45001.3	4,500 Litre (1,000 gallon) chemical industrial storage tank @ sg = 1.3
IT4500S1.3	4,500 Litre (1,000 gallon) squat chemical industrial storage tank @ sg = 1.3
IT90001.3	9,000 Litre (2,000 gallon) chemical industrial storage tank @ sg = 1.3
IT9000S1.3	9,000 Litre (2,000 gallon) squat chemical industrial storage tank @ sg = 1.3
IT95001.3	9,500 Litre (2,100 gallon) chemical industrial storage tank @ sg = 1.3
IT135001.3	13,500 Litre (3,000 gallon) chemical industrial storage tank @ sg = 1.3
IT225001.3	22,500 Litre (5,000 gallon) chemical industrial storage tank @ sg = 1.3
IT320001.3	32,000 Litre (7,000 gallon) chemical industrial storage tank @ sg = 1.3
IT500001.3	50,000 Litre (10,000 gallon) chemical industrial storage tank @ sg = 1.3
IT2501.5	250 Litre (55 gallon) chemical industrial storage tank @ sg = 1.5
IT10001.5	1,000 Litre (220 gallon) chemical industrial storage tank @ sg = 1.5
IT25001.5	2,500 Litre (550 gallon) chemical industrial storage tank @ sg = 1.5
IT35001.5	3,500 Litre (750 gallon) chemical industrial storage tank @ sg = 1.5
IT45001.5	4,500 Litre (1,000 gallon) chemical industrial storage tank @ sg = 1.5
IT4500S1.5	4,500 Litre (1,000 gallon) squat chemical industrial storage tank @ sg = 1.5
IT90001.5	9,000 Litre (2,000 gallon) chemical industrial storage tank @ sg = 1.5
IT9000S1.5	9,000 Litre (2,000 gallon) squat chemical industrial storage tank @ sg = 1.5
IT95001.5	9,500 Litre (2,100 gallon) chemical industrial storage tank @ sg = 1.5
IT135001.5	13,500 Litre (3,000 gallon) chemical industrial storage tank @ sg = 1.5
IT225001.5	22,500 Litre (5,000 gallon) chemical industrial storage tank @ sg = 1.5
IT320001.5	32,000 Litre (7,000 gallon) chemical industrial storage tank @ sg = 1.5
IT500001.5	50,000 Litre (10,000 gallon) chemical industrial storage tank @ sg = 1.5



Detailed drawings are required as to fitting location, type and sizes on all chemical tanks (Coerco can supply tank drawings for customer to complete fitting details).

Please note Tank sizes may vary between States and Territories in Australia



COURTESY OF MAKWATER



COURTESY OF MAKWATER



Clarifiers

Industrial Process Tanks



Features

- Manufactured from durable polyethylene
- Chemical and UV resistant
- Cone base allows complete drainage
- Ideal for waste water treatment
- Includes inlet, outlet and internal pipework
- Custom modifications to suit your requirement

Clarifier Tanks

Code	Description
ITCC5000RT	5,000 Litr (1,110 Gallon) Chemical Industrial Clarifier Tank (Bare) - Cone Base/Roof Top
ITCC5000GT	5,000 Litr (1,110 Gallon) Chemical Industrial Clarifier Tank (Bare) - Cone Base/Gutter Top
ITCB5000S	Stand (Galvanized) To Suit 5,000 Litre (1,110 Gallon) Chemical Industrial Storage Tank - Cone Base
ITCC12000GT	12,000 Litr (2,600 Gallon) Chemical Industrial Clarifier Tank (Bare) - Cone Base/Gutter Top
ITCB12000S	Stand (Galvanized) To Suit 12,000 Litre (2,600 Gallon) Chemical Industrial Storage Tank - Cone Base
ITCC27000RT	27,000 Litr (6,000 Gallon) Chemical Industrial Clarifier Tank (Bare) - Cone Base/Roof Top
ITCB27000S	Stand (Galvanized) To Suit 27,000 Litre (6,000 Gallon) Chemical - Cone Base

Please note Tank sizes may vary between States and Territories in Australia

Access Manholes and Signage

Industrial Process Tanks



MT-SAM710 and SIGN-10-01



COMP-33-10

Access Manholes and Signage

Code	Description
COMP-33-11	455MM Manhole Lid, Rim and Seal
COMP-33-10	600mm Manhole Lid, Rim and Seal
MT-SAM710	710mm Side Access Manhole
SIGN-10-01	Confined Space Danger Signage

Bunded Tanks

Industrial Process Tanks



Features

- Inner and outer skins both manufactured from durable, light weight, hexene polyethylene
- UV resistant suitable for our harsh climate conditions
- Chemical and impact resistant
- Large range of sizes available
- Designed to suit any project or requirement
- Available in all colourbond colours
- Manufactured in guidance with Australian Standards

Bunded Tanks	
Code	Description
ITBT5000	5,000 Litre (1,110 Gallon) Storage Tank Bunded
ITBT8000	8,000 Litre (1,760 Gallon) Storage Tank Bunded
ITBT13500	13,500 Litre (3,000 Gallon) Storage Tank Bunded
ITBT22500	22,500 Litre (5,000 Gallon) Storage Tank Bunded
ITBT32000	32,000 Litre (5,000 Gallon) Storage Tank Bunded

Please note Tank sizes may vary between States and Territories in Australia

Insulated Tanks

Industrial Process Tanks



Features

- Tank manufactured from tough hexene polyethylene and coated with a spray on polyurethane foam
- UV resistant suitable for harsh conditions
- Chemical and impact resistant
- Ideal for storing liquid at a consistent temperature
- Manufactured in guidance with Australian Standards

Waste Transfer Tank

Industrial Process Tanks



Features

- 7HP Diesel Electric start P301T/L70E Yanmar Trash Pump
- Mine Spec (Emergency Stop, Pump Bund)
- Suction pipe fitted with strainer
- Suction and pump out all tap engaged (no need to change pipes over)
- Suction hose support

Access Ladders

Industrial Process Tanks



Access Ladders

Code	Description
HAL-10500A	Hatch access ladder to suit JRR10500 manufactured from marine grade aluminium in compliance with AS1657
HAL-10500P	Hatch access ladder to suit JRR10500 manufactured from marine grade aluminium in compliance with AS1657 and painted in y14 safety yellow
HAL-13500A	Hatch access ladder to suit RT13500 manufactured from marine grade aluminium in compliance with AS1657
HAL-13500P	Hatch access ladder to suit RT13500 manufactured from marine grade aluminium in compliance with AS1657 and painted in y14 safety yellow
HAL-15000A	Hatch access ladder to suit JRR15000 manufactured from marine grade aluminium in compliance with AS1657
HAL-15000P	Hatch access ladder to suit JRR15000 manufactured from marine grade aluminium in compliance with AS1657 and painted in y14 safety yellow
HAL-22500A	Hatch access ladder to suit RT22500 manufactured from marine grade aluminium in compliance with AS1657
HAL-22500P	Hatch access ladder to suit RT22500 manufactured from marine grade aluminium in compliance with AS1657 and painted in y14 safety yellow
HAL-25000A	Hatch access ladder to suit JRR25000 manufactured from marine grade aluminium in compliance with AS1657
HAL-25000P	Hatch access ladder to suit JRR25000 manufactured from marine grade aluminium in compliance with AS1657 and painted in y14 safety yellow
HAL-28000A	Hatch access ladder to suit JRR28000 manufactured from marine grade aluminium in compliance with AS1657
HAL-28000P	Hatch access ladder to suit JRR28000 manufactured from marine grade aluminium in compliance with AS1657 and painted in y14 safety yellow
HAL-32000A	Hatch access ladder to suit RT32000 manufactured from marine grade aluminium in compliance with AS1657
HAL-32000P	Hatch access ladder to suit RT32000 manufactured from marine grade aluminium in compliance with AS1657 and painted in y14 safety yellow
HAL-50000A	Hatch access ladder to suit JRR50000 manufactured from marine grade aluminium in compliance with AS1657
HAL-50000P	Hatch access ladder to suit JRR50000 manufactured from marine grade aluminium in compliance with AS1657 and painted in y14 safety yellow

Please note Tank sizes may vary between States and Territories in Australia

Features

- Manufactured in compliance with Australian Standard AS1657
- Manufactured from a marine grade T6 Aluminium
- Light weight and ease of installation
- Specifically designed to suit Coerco tank range
- Stainless steel fixings
- Custom design and engineered to suit any requirements (optional)
- Painted in Y14 safety yellow (optional)



Container Tank Systems

Industrial Process Tanks

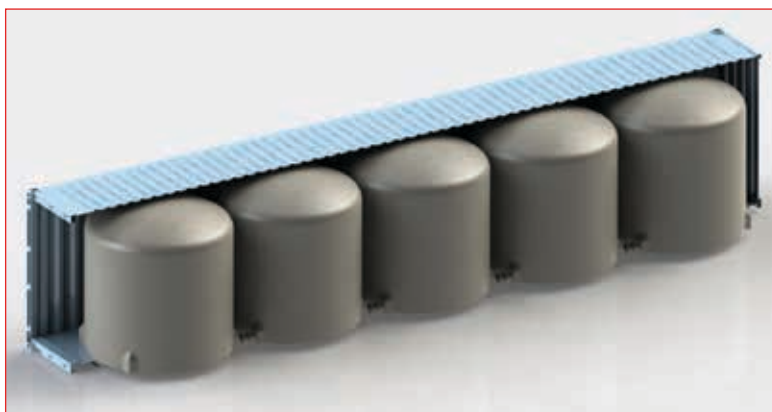


Container Tank Systems

Code	Description
CMT20-20	20,000Ltr Modular Container Tank System
CMT50-40	50,000Ltr Modular Container Tank System

Features

- Available in capacities to suit 20' and 40' sea containers
- Durable polyethylene tanks - no rust!
- 10,000ltr per unit
- Tank units fastened securely for safe transport
- Packaged unit conforms to international shipping and transport dimensional requirements for easy logistics!
- Suitable for short or long term water storage in remote areas



Free Standing Liquid Transport Tanks

Liquid Transportation and Dust Suppression

Sight tube for easy viewing of content volume



Features

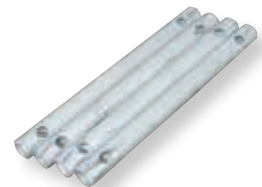
- Easy to read calibrations
- Strength through ingenuity of design
- Durable, impact resistant, UV stabilised polyethylene for long life
- Sight tube for easy viewing of content volume (3000 litres and larger)
- One outlet supplied with tank, quantity and sizes optional
- Spill containment lip surrounds lid on tanks larger than 200 litres
- Large range of sizes to satisfy every requirement
- Integral foam filled baffle to reduce surge and increase stability*
- Optional mounting pins available (refer page 23)
- Optional Ball Baffle System® available (refer page 22)
- All free standing tanks available with forkliftable galvanised skid.



- Moulded Lifting Lugs
- Vented Lid and Basket Filter
- Mounting Points Moulded into Tank
- Poly Fittings for Easy Connection



Cutaway showing Baffle



Optional Mounting Pins (refer page 23)

Free Standing Liquid Transport Tanks

Code	Description (mm)
ST200FS	200 Ltr Free Standing Cartage Tank - (1020L X 600W X 625H)
ST200FSS	200Ltr Free Standing Cartage Tank With Skid - (1020L X 600W X 725H)
ST400FS	400 Ltr Free Standing Cartage Tank - (1250L X 850W X 650H)
ST400FSS	400 Ltr Free Standing Cartage Tank With Skid - (1250L X 850W X 800H)
ST600FS	600 Ltr Free Standing Cartage Tank - (1300L X 980W X 710H)
ST600FSS	600 Ltr Free Standing Cartage Tank With Skid - (1300L X 980W X 860H)
ST800FS	800 Ltr Free Standing Cartage Tank - (1370L X 1100W X 860H)
ST800FSS	800 Ltr Free Standing Cartage Tank With Skid - (1370L X 1100W X 1010H)
ST1000FS	1000 Ltr Free Standing Cartage Tank - (1355L X 1210W X 960H)
ST1000FSS	1000 Ltr Free Standing Cartage Tank With Skid - (1355L X 1210W X 1110H)
ST1500FS	1500 Ltr Free Standing Cartage Tank - (1750L X 1250W X 1045H)
ST1500FSS	1500 Ltr Free Standing Cartage Tank With Skid - (1750L X 1250W X 1195H)

*Except 3000, 5000, 12500 & 15000ltr Models

Free Standing Liquid Transport Tanks

Liquid Transportation and Dust Suppression



ST200FS



ST400FS



ST600FS



ST800FS



ST1000FS



ST1500FS



ST2000FS



ST3000FS



ST5000FS



ST7000FS



ST10000FS



ST12500FS



ST15000FS

Free Standing Liquid Transport Tanks

Code	Description (mm)
ST2000FS	2000 Ltr Free Standing Cartage Tank - (1830L X 1400W X 1130H)
ST2000FSS	2000 Ltr Free Standing Cartage Tank With Skid - (1830L X 1400W X 1280H)
ST3000FS	3000 Ltr Free Standing Cartage Tank - (2300L X 1500W X 1260H) - Non Baffled
ST3000FSS	3000 Ltr Free Standing Cartage Tank With Skid - (2300L X 1500W X 1410H) - Non Baffled
ST5000FS	5000 Ltr Free Standing Cartage Tank - (2820L X 1650W X 1700H) - Non Baffled
ST5000FSS	5000 Ltr Free Standing Cartage Tank With Skid - (2820L X 1650W X 1850H) - Non Baffled
ST7000FS	7000 Ltr Free Standing Cartage Tank - (3430L x 1850W x 1670H)
ST7000FSS	7000 Ltr Free Standing Cartage Tank With Skid - (3430L x 1850W x 1820H)
ST10000FS	10,000 Ltr Free Standing Cartage Tank - (3600L x 2100W x 1890H)
ST10000FSS	10,000 Ltr Free Standing Cartage Tank With Skid (3600L x 2100W x 2140H)
ST12500FS	12,500 Ltr Free Standing Cartage Tank - (4000L x 2200W x 2250H) - Non Baffled
ST12500FSS	12,500 Ltr Free Standing Cartage Tank With Skid - (4000L x 2200W x 2400H) - Non Baffled
ST15000FS	15,000 Ltr Free Standing Cartage Tank - (4000L X 2350W X 2215H) - Non Baffled
ST15000FSS	15,000 Ltr Free Standing Cartage Tank With Skid (4000L X 2350W X 2465H) - Non Baffled

Heavy Duty Skid Mounted Liquid Transport Units

Liquid Transportation and Dust Suppression

Features

- Robust Galvanised skidmount frame
- Forklift access for manoeuvrability
- Sturdy lash down points on frame for secure transport
- High grade powdercoat finish on all safety rail work
- 360° swivelling hose reel with lock (to prevent accidental unwinding) for washdown applications etc.
- Unique stow-away, ground access ladder for hose reel/pump operation
- Lid access ladder and hand rails for safe filling operation
- 1½" pressure firefighter pump for hose reel supply
- 3" transfer pump with camlock fittings for easy use
- Both pump units can be used for filling, transfer etc. simultaneously



Heavy Duty Skid Mounted Liquid Transport Units

Code	Description (mm)
MT-ST7000SK	7000 Ltr Bare Tank And Heavy Duty Galvanised Skid Unit
MT-ST7000SKP	7000 Ltr Skidmount Liquid Cartage Unit Complete
MT-ST10000SK	10,000 Ltr Bare Tank And Heavy Duty Galvanised Skid Unit
MT-ST10000SKP	10,000 Ltr Skidmount Liquid Cartage Unit Complete
MT-FRC/S	Hose Reel Stand To Suit Heavy Duty Skids
MT-GAL	Ground Access Ladder To Suit Heavy Duty Skids
MT-HAL	Hatch Access Ladder To Suit Heavy Duty Skids
MT-PSR	Platform Safety Rail Kit To Suit Heavy Duty Skids



Options

- Tank and pumps suitable for liquid chemicals
- Both ladder models available on either side of unit
- Ground access ladder available at front of unit
- Pump sizes and setup (transfer and/or pressure)
- 25mm Hose Reel/s
- Spreader spray bars for water binding, dust suppression etc.
- Ball Baffle System® (refer page 22)



5000ltr Skidmount Unit with water cannon setup



Liquid Transport and Dust Suppression Accessories

Liquid Transportation and Dust Suppression

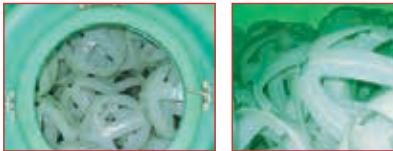


Features

- Reduces fluid movement for improved load stability during transit
- Suitable for use with all tanks - steel, poly, fibreglass, etc.
- Food grade quality material - suitable for potable water
- Can be used with water, diesel and other liquids
- No rust, lightweight & durable
- Low liquid displacement
- Simple to install
- Recommended use quantity:
 - 355mm is 1 ball baffle per 40 litres of tank capacity
 - 195mm is 1 ball baffle per 7 litres of tank capacity
- Ball Baffles are supplied in two halves and require clipping together and inserting through the lid into tank.

Liquid Transfer Equipment and Accessories

Code	Description (mm)
SBB195	Small Baffle Ball - 195mm
SBB355	Large Baffle Ball - 355mm



Tested and approved in Australia by Loadsafe Australia. Complies with load restraint guide performance standards.

Tested and approved in Australia by Loadsafe Australia.
Complies with load restraint guide performance standards



Improves tanker stability in rough terrain



STABILITY - Don't try this without Ball Baffles!



BRAKING - Independent testing shows 46% improvement in braking

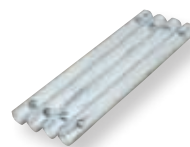
Slalom testing shows remarkable increase in vehicle stability with 2/3 full water tank fitted with Ball Baffle System®

Liquid Transport and Dust Suppression Accessories

Liquid Transportation and Dust Suppression

Tank Lids & Basket Filters

Code	Description (mm)
COMP-33-04	255mm Basket Filter
COMP-33-07	355mm Basket Filter
COMP-33-09	455mm Basket Filter
COMP-33-06	355mm Hinged Lid, Rim and Seal
COMP-33-08	455mm Hinged Lid, Rim and Seal



Mounting Pins

- Optional mounting pins
- Available to suit all sizes of Coerco liquid cartage tanks
- Fully galvanised - no rusting!

Mounting Pins

Code	Description (mm)
STA-20-1	Set of (4x PART-05-01) Mounting Pins to suit 200Ltr Cartage Tank
STA-20-2	Set of (4x PART-05-02) Mounting Pins to suit 400 & 600Ltr Cartage Tanks
STA-25	Set of (4x PART-05-03) Mounting Pins to suit 800-5000Ltr Cartage Tanks
STA-38	Set of (4x PART-05-04) Mounting Pins to suit 7,000Ltr Cartage Tank
STA-47	Set of (4x PART-05-05) Mounting Pins to suit 10,000Ltr Cartage Tank
STA-38-2	Set of (8x PART-05-04) Mounting Pins to suit 12,500Ltr Cartage Tank



Poly Tank Fittings

- Available in 6 sizes
- Manufactured from UV Stabilised Glass Fibre Reinforced Nylon giving a weather, termite, fungi and bacterial resistance



Brass Tank Fittings

- Brass tank fittings have internal & external threads (25-50mm)
- Locking nut is left hand thread for secure fit. Doesnt come loose when fitting valves etc

Tank Fittings

Code	Description (mm)
COMP-19-02	25mm (1") Poly Fitting
COMP-19-03	32mm (1 1/4") Poly Fitting
COMP-19-04	40mm (1 1/2") Poly Fitting
COMP-19-05	50mm (2") Poly Fitting
COMP-19-06	80mm (3") Poly Fitting
COMP-19-07	100mm (4") Poly Fitting
COMP-01-01	25mm (1") Brass Fitting
COMP-01-02	32mm (1 1/4") Brass Fitting
COMP-01-03	40mm (1 1/2") Brass Fitting
COMP-01-04	50mm (2") Brass Fitting
COMP-01-05	80mm (3") Brass Fitting
COMP-01-06	100mm (4") Brass Fitting

Skid Mount Fire Fighter and Washdown Units

Fire Fighting and Washdown Equipment



- Features**
 - Durable UV Stabilised Polyethylene Tank
 - Strong Hot Dip Galvanised Steel Frame with easy lifting & tie down points - always ready for action
 - 19mm Poly Hose Reel - Complete With Firefighting Adjustable Nozzle and Hose Reel Lock (to prevent accidental unwinding)
 - 40mm Camlock Quick Connection Fittings
 - Suction hose with non return foot valve
 - Reliable GX160 Honda Engine Powered Firefighter Pump (Other Models Available)

Skid Mount Fire Fighter and Washdown Units

Code	Description (mm)
FF400C	400 Ltr Skid Mounted Firefighter - (1750L X 1250W X 700H)
FF600C	600 Ltr Skid Mounted Firefighter - (1800L X 1300W X 800H)
FF800C	800 Ltr Skid Mounted Firefighter - (1950L X 1400W X 850H)
FF1000C	1000 Ltr Skid Mounted Firefighter - (2050L X 1400W X 1050H)
FF1500C	1500 Ltr Skid Mounted Firefighter - (2600L X 1250W X 1050H)
FF2000C	2000 Ltr Skid Mounted Firefighter - (2850L X 1350W X 1150H)

- Options**
 - 25mm Hose reel
 - Diesel powered pump
 - High pressure twin impeller pump
 - Ball Baffle System® (refer page 39)



Compact Fire Fighter and Washdown Units

Fire Fighting and Washdown Equipment



FFCH600



FFCH800



FFCH1000

Features

- Durable UV Stabilised Polyethylene Tank
- Strong Hot Dip Galvanised Steel Frame with easy lifting & tie down points - always ready for action
- 19mm Poly Hose Reel - Complete With Firefighting Adjustable Nozzle and Hose Reel Lock (to prevent accidental unwinding)
- 40mm Camlock Quick Connection Fittings
- Suction hose with non return foot valve
- Reliable GX160 Honda Engine Powered Firefighter Pump (Other Models Available)

Compact Fire Fighting and Washdown Equipment

Code	Description (mm)
FFCH600	600 Ltr Compact Firefighter - (1600L X 1100W X 1000H)
FFCH800	800 Ltr Compact Firefighter - (1800L X 1100W X 1000H)
FFCH1000	1000 Ltr Compact Firefighter - (1700L X 1250W X 1100H)

Options

- 25mm Hose reel
- Diesel powered pump
- High pressure twin impeller pump
- Ball Baffle System® (refer page 39)

Trailed Fire Fighting and Washdown Equipment

Fire Fighting and Washdown Equipment

Trailers shown with optional extras



MT-FF1000T



MT-FF1500TT

Features

- Designed and manufactured for easy operation
- Durable UV stabilised polyethylene baffled tank
- Galvanised chassis frame
- Mudguards
- Mudflaps
- Heavy duty pivot jockey wheel
- ADR (Australian Design Rules) compliant Brake Systems
- Landcruiser stud pattern rims
- Reliable GX160 Honda engine Powered Firefighter Pump (different models available)
- 40mm camlock quick connection fittings
- 19mm poly hose reel - complete with hose reel lock (to prevent accidental unwinding)
- Suction hose with non return foot valve

Trailed Fire Fighting and Washdown Equipment

Code	Description (mm)
MT-FF600T	600 Ltr Industrial Single Axle Firefighter Trailer Unit - Includes Tank, Petrol Pump & 20mm Hose Reel On Rolling Chassis/Unlicensed
MT-FF800T	800 Ltr Industrial Single Axle Firefighter Trailer Unit - Includes Tank, Petrol Pump & 20mm Hose Reel On Rolling Chassis/Unlicensed
MT-FF1000T	1000 Ltr Industrial Single Axle Firefighter Trailer Unit - Includes Tank, Petrol Pump & 20mm Hose Reel On Rolling Chassis/Unlicensed
MT-FF1000TT	1000 Ltr Industrial Tandem Axle Firefighter Trailer Unit - Includes Tank, Petrol Pump & 20mm Hose Reel On Rolling Chassis/Unlicensed
MT-FF1500TT	1500 Ltr Industrial Tandem Axle Firefighter Trailer Unit - Includes Tank, Petrol Pump & 20mm Hose Reel On Rolling Chassis/Unlicensed
MT-FF2000TT	2000 Ltr Industrial Tandem Axle Firefighter Trailer Unit - Includes Tank, Petrol Pump & 20mm Hose Reel On Rolling Chassis/Unlicensed

Options

- High quality powdercoat finish on mudguards
- Indicator lamp kit
- License inspection and registration
- High pressure twin impeller pump
- 25mm fire hose reel
- Diesel powered pump
- Tool/storage box
- Twin Hose Reels
- Spare Tyre Carrier
- Fire extinguisher
- Ball Baffle System® (refer page 39)

Poly Hose Reels

Fire Fighting and Washdown Equipment



Poly Firefighter and Washdown Hose Reels

Code	Description (mm)
FRC20	Fire Hose Reel - 20mm Hose @ 36 Mtr
FRC25	Fire Hose Reel - 25mm Hose @ 30 Mtr
FRXH20	Fire Hose Reel - Excluding Hose - To Suit 20mm Hose
FRXH25	Fire Hose Reel - Excluding Hose - To Suit 25mm Hose

Features

- Poly Hose reel and base - no rust hot dip galvanised spindle
- Available in 19mm & 25mm configurations
- Hose reel lock - to prevent accidental unwinding
- Quality firefighter spray nozzle

Trailed Diesel Transport Equipment

Diesel Transport Products



Shown with optional extras



Features

- Purpose built for easy operation and smooth towing
- Landcruiser stud pattern hubs with spring suspension
- Durable tank manufactured with a specialised grade polyethylene formulated for use in diesel tanks
- Galvanised chassis frame
- Custom mudflaps
- Heavy duty pivot jockey wheel
- UV stabilised for long life
- ADR (Australian Design Rules) compliant Brake Systems

Options

- Fully Bunded Chassis
- High quality powdercoat finish on mudguards
- Indicator lamp kit
- License Inspection and registration
- Tool/storage box
- Delivery hose reel
- Diesel transfer pump kits (refer to page 48 - this section)
- Spare Tyre Carrier
- Fire extinguisher
- Ball Baffle System® (refer page 39)

Trailed Diesel Transport Equipment	
Code	Description (mm)
MT-DT600T	600 Ltr Industrial Single Axle Diesel Trailer Unit - Includes Tank On Rolling Chassis Only/Unlicensed
MT-DT800T	800 Ltr Industrial Single Axle Diesel Trailer Unit - Includes Tank On Rolling Chassis Only/Unlicensed
MT-DT1000T	1000 Ltr Industrial Single Axle Diesel Trailer Unit - Includes Tank On Rolling Chassis Only/Unlicensed
MT-DT1000TT	1000 Ltr Industrial Tandem Axle Diesel Trailer Unit - Includes Tank On Rolling Chassis Only/Unlicensed
MT-DT1500TT	1500 Ltr Industrial Tandem Axle Diesel Trailer Unit - Includes Tank On Rolling Chassis Only/Unlicensed
MT-DT2000TT	2000 Ltr Industrial Tandem Axle Diesel Trailer Unit - Includes Tank On Rolling Chassis Only/Unlicensed



Free Standing Diesel Transport Tanks

Diesel Transport Products

Features

- Baffled for vastly improved vehicle stability
- Flat based to allow transport flexibility
- Special grade polyethylene for diesel - coloured to denote "Diesel Only"
- UV stabilised for long outdoor life
- Mounting Pins Available (refer page 36)
- Optional Ball Baffle System® (refer page 39)
- All models available with forkliftable galvanised mounting skid
- 2" filler hole with cap, 2" drum pump access fitting and splash resistant vent
- Calibrated for easy checking of content volume with optional sight tube available



DT600FS

Free Standing Diesel Transport Tanks

Code	Description (mm)
DT400FS	400 Ltr Baffled Free Standing Diesel Transport Tank - (1250L X 850W X 650H)
DT400FSS	400 Ltr Baffled Free Standing Diesel Transport Tank With Skid - (1250L X 850W X 800H)
DT600FS	600 Ltr Baffled Free Standing Diesel Transport Tank - (1300L X 980W X 710H)
DT600FSS	600 Ltr Baffled Free Standing Diesel Transport Tank With Skid - (1300L X 980W X 860H)
DT800FS	800 Ltr Baffled Free Standing Diesel Transport Tank - (1370L X 1100W X 860H)
DT800FSS	800 Ltr Baffled Free Standing Diesel Transport Tank With Skid - (1370L X 1100W X 1010H)
DT1000FS	1000 Ltr Baffled Free Standing Diesel Transport Tank - (1355L X 1210W X 960H)
DT1000FSS	1000 Ltr Baffled Free Standing Diesel Transport Tank With Skid - (1355L X 1210W X 1110H)
DT1500FS	1500 Ltr Baffled Free Standing Diesel Transport Tank - (1750L X 1250W X 1045H)
DT1500FSS	1500 Ltr Baffled Free Standing Diesel Transport Tank With Skid - (1750L X 1250W X 1195H)
DT2000FS	2000 Ltr Baffled Free Standing Diesel Transport Tank - (1830L X 1400W X 1130H)
DT2000FSS	2000 Ltr Baffled Free Standing Diesel Transport Tank With Skid - (1830L X 1400W X 1280H)
DT3000FS	3000 Ltr Baffled Free Standing Diesel Transport Tank - (2300L X 1500W X 1260H) - With Baffle Balls
DT3000FSS	3000 Ltr Baffled Free Standing Diesel Transport Tank With Skid - (2300L X 1500W X 1410H) - With Baffle Balls
DT5000FS	5000 Ltr Baffled Free Standing Diesel Transport Tank - (2820L X 1650W X 1700H) - With Baffle Balls
DT5000FSS	5000 Ltr Baffled Free Standing Diesel Transport Tank With Skid - (2820L X 1650W X 1850H) - With Baffle Balls
DT7000FS	7000 Ltr Baffled Free Standing Diesel Transport Tank - (3430L x 1850W x 1670H)
DT7000FSS	7000 Ltr Baffled Free Standing Diesel Transport Tank With Skid - (3430L x 1850W x 1820H)
DT10000FS	10,000 Ltr Baffled Free Standing Diesel Transport Tank - (3600L x 2100W x 1890H)
DT10000FSS	10,000 Ltr Baffled Free Standing Diesel Transport Tank With Skid (3600L x 2100W x 2140H)

Sump Base Diesel Transport Tanks

Diesel Transport Products

Features

- Convenient range of sizes to satisfy most requirements
- Strong, durable yet lightweight tanks with robust Galvanised steel skid frame to withstand most demanding conditions of use
- Integral draining sump with 3/4" drain plug to allow complete evacuation of contents
- 2" filler hole with cap, 2" drum pump access fitting and splash resistant vent
- Calibrated for easy checking of content volume with optional sight tube available
- Optional Ball Baffle System® (refer page 39)
- Mounting Pins Available (refer page 36)



DT400S

Sump Base Diesel Transport Tanks

Code	Description (mm)
DT400	400 Ltr Sump Drain Diesel Transport Tank - (1250L X 850W X 650H)
DT400S	400 Ltr Sump Drain Diesel Transport Tank With Skid - (1250L X 850W X 800H)
DT600	600 Ltr Sump Drain Diesel Transport Tank - (1300L X 980W X 710H)
DT600S	600 Ltr Sump Drain Diesel Transport Tank With Skid - (1300L X 980W X 860H)
DT800	800 Ltr Sump Drain Diesel Transport Tank - (1370L X 1100W X 860H)
DT800S	800 Ltr Sump Drain Diesel Transport Tank With Skid - (1370L X 1100W X 1010H)
DT1000	1000 Ltr Sump Drain Diesel Transport Tank - (1355L X 1210W X 960H)
DT1000S	1000 Ltr Sump Drain Diesel Transport Tank With Skid - (1355L X 1210W X 1110H)
DT1500	1500 Ltr Sump Drain Diesel Transport Tank - (1750L X 1250W X 1045H)
DT1500S	1500 Ltr Sump Drain Diesel Transport Tank With Skid - (1750L X 1250W X 1195H)
DT2000	2000 Ltr Sump Drain Diesel Transport Tank - (1830L X 1400W X 1130H)
DT2000S	2000 Ltr Sump Drain Diesel Transport Tank With Skid - (1830L X 1400W X 1280H)

Diesel Transfer Products

Diesel Transport Products

Features

Diesel Pump Kits for refuelling operations from drums, tanks or mobile refuelling carts. Robust proven pump kits for diesel refuelling operations. Designed to give effortless refuelling for agriculture, transport, earthmoving, mining, logging and marine industries.

Diesel Transfer Products

Code	Description
MT-12AHF	12 Volt Hi-Flo Pump Kit With Auto Shut-Off Nozzle - 85Lpm Kit
MT-12A45K	12 Volt Pump Kit With Auto Shut-Off Nozzle - 45Lpm
MT-12A60K	12 Volt Pump Kit With Auto Shut-Off Nozzle - 60Lpm
MT-FM4	1" Bsp Port 4 Digit Flow Meter, Manual.
MT-FMD	1" Bsp Electronic Inline Digital Flow Meter For Diesel
MT-DHA25	25mm Auto Rewind Diesel Hosereel
MT-DHM25	25mm Manual Rewind Diesel Hosereel
MT-ASN25	1" Auto Shut-off Nozzle



MT-12AHF

- 85 L/min open flow
- 12 volt DC/35 amp pump
- 4 metre battery cable with alligator clips
- Easy to use volumetric self priming
- 1" BSP female ports
- 4 metres of 25mm diesel delivery hose
- Auto Shutoff Nozzle with swivel



MT-12A45K

- 45L/min open flow
- 4 metres of 20mm anti-static delivery hose with anti-kink spring + auto shut-off nozzle
- 4 metres of power cable
- 2 metres of 20mm suction hose
- On/off switch on pump



MT-12A60K

- 60L/min open flow
- 4 metres of 25mm anti-static delivery hose with anti-kink spring + auto shut-off nozzle
- 4 metres of power cable
- 2 metres of 25mm suction hose
- Easy clean suction strainer



MT-FM4

- 1" BSP port 4 digit flow meter with flow range from 20 - 120 LPM.
- 4 digit resettable totaliser. 8 digit non resettable cumulative total.
- For use with diesel fuel in pump or gravity applications.



MT-FMD

- 1" BSP electronic inline turbine meter with compact display ideal for fitting at fuel nozzles.
- Flow range 10-120 LPM maximum, Working Pressure 300 PSI. Accuracy $\pm 1\%$.



MT-DHM25

- Hand rewind hose reel
- Entry level model for contractors
- Capacity 10m x 25mm hose,
- Powdercoated steel construction



MT-DHA25

- Hose reel with 15m x 25mm hose. 1" BSP inlet/outlet. Air/Water/Diesel.
- 300 PSI Working Pressure.



MT-ASN25

- 1" BSP port
- Auto Shut-off

Self Contained Diesel Transport Tanks

Diesel Transport Products



*Italian Made
Diesel Pumps*



Features

- Models to fit all ute trays
- Pump cover to protect pump and fittings from weather and damage
- Transfer pump includes 40LPM pump, vented filler cap, 4m fuel hose, electrical leads and clamps plus trigger nozzle
- Lightweight and compact units - saves tray space and allows easy on/off loading
- Automatic trigger nozzle as standard



Self Contained Diesel Transport Tanks

Code	Description (mm)
DMP200	200 Ltr Self Contained Diesel Unit - With 12 Volt Pump And Nozzle - (1020L X 790W X 680H)
DMP400	400 Ltr Self Contained Diesel Unit - With 12 Volt Pump And Nozzle - (1650L X 790W X 680H)
DMP600	600 Ltr Self Contained Diesel Unit - With 12 Volt Pump And Nozzle - (1700L X 900W X 760H)
DMP800	800 Ltr Self Contained Diesel Unit - With 12 Volt Pump And Nozzle - (1700L X 900W X 760H)
DMP1000	1000 Ltr Self Contained Diesel Unit - With 12 Volt Pump And Nozzle - (1730L X 1050W X 1030H) - With Baffle Balls

Safety Information

- For use with diesel only.
- Tank must be secured to vehicle and safe working practice observed.
- Some fuel distributors have specific filling requirements - check with your supplier before ordering.
- Coerco is not liable for any damage or loss through improper use of this equipment.

Trailer Equipment Accessories

Trailer Equipment Accessories



MT-FE9



MT-ILK



MT-SRK



MT-SW



MT-TB



MT-WCK

Features

There is a range of optional extras available for your Coerco trailer as required including licensing, spare wheel carriers, indicator lamp kits and accessories for safety compliance requirements.

Trailer Equipment Accessories

Code	Description
MT-FAK	First Aid Kit
MT-FE9	Fire Extinguisher & Mount Bracket - 9Kg
MT-ILK	Indicator Lamp Kit (Required If Licensing)
MT-LICP	License Inspection Compliance Plate (Required If Licensing)
MT-REG06	License Registration - 6 Months (Optional)
MT-REG12	License Registration - 12 Months (Optional)
MT-RM	Reflective Markings Tape -75Mm X 1Mtr
MT-SRK	Spill Response Kit Including Storage Box
MT-ST	Spare Wheel Carrier Only
MT-SW	Spare Wheel & Carrier
MT-TB	Heavy Duty Steel Tool Box
MT-WCK	Poly Wheel Chock (set x 2)

Septic Tanks

Septic Systems

Coerco offers a range of poly septic tank systems which are easily adaptable to suit any requirement and with all required Department of Health WA approvals. Manufactured from polyethylene these products are lightweight, resilient and very flexible to allow easy transportation and installation whilst delivering the perfect desired functionality.



Features

- Lightweight, easy to transport and install
- Manufactured from durable polyethylene
- Anti floatation ring and ribbing incorporated into design
- Certified to Australia Standard AS/NZS1456.1 and approved by Department of Health - WA
- Supplied as complete kit including lid, inlet & outlet 'T' pieces
- Leach Drain systems also available (Refer to page 42)

Septic Tanks

Code	Description (mm)
SEP-1450	1,450ltr Septic Tank (1250D x 1500H)
SEP-2200	2,200ltr Septic Tank (1540D x 1500H)
SEP-4000	4,000ltr Septic Tank (2200D x 1770H)



Large Septic Tanks

Septic Systems



Large Septic Tanks

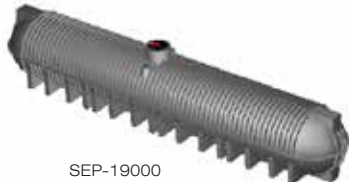
Code	Description
SEP-7000	7,000Ltr Underground Septic Tank
SEP-11000	11,000Ltr Underground Septic Tank
SEP-15000	15,000Ltr Underground Septic Tank
SEP-19000	19,000Ltr Underground Septic Tank
SEP-23000	23,000Ltr Underground Septic Tank



SEP-7000



SEP-11000



SEP-19000



SEP-23000



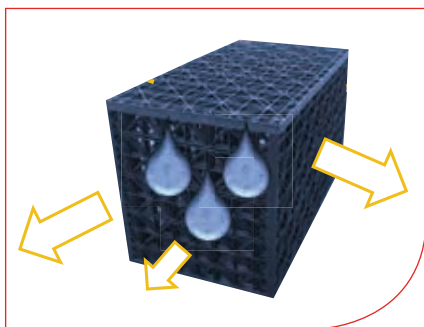
Features include

- Manufactured from Durable Polyethylene
- Engineered Design
- Chemical and Effluent resistant
- Lightweight (ease of installation)
- Various Manhole options
- Plug & Play with Baffle, Inlet, Outlet & 'T' pieces included

Product images are a close guide only and may not represent actual product

Leach Drain Systems

Septic Systems

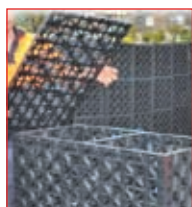


Features

- 100% recycled
- Light weight
- Modular
- 95% void area
- Strong
- Service temperature, -20oC – 120oC
- Polypropylene
- Flat pack form

Benefits

- Environmentally friendly
- Simple to install
- Trafficable
- Cost effective
- Chemically inert
- Not affected by mould or algae
- UV stabilised
- Water saving
- 100% recyclable



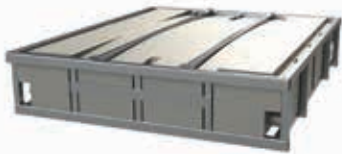
Coerco's leach drain systems are design to integrate efficiently with our septic tank units although can be utilised in any waste water situation requirement that requires a leaching system. Manufactured from strong light weight polypropylene they are an easy to install cost effective solution for effluent waste issues. They are flat packed for easy and efficient logistics. The systems are very flexible with a range of configurations for every individual requirement and designed to meet strict industry regulations and standards.

Leach Drain Systems

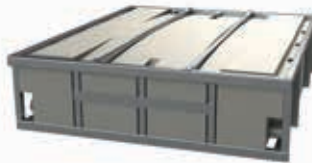
Code	Description
RS-LD500	5.00Mtr (Includes 22 Large Panels, 21 Small Panels & Geocloth 6.0M X 2M)
RS-LD572	5.72Mtr (Includes 25 Large Panels, 24 Small Panels & Geocloth 7.0M X 2M)
RS-LD643	6.43Mtr (Includes 28 Large Panels, 27 Small Panels & Geocloth 7.5M X 2M)
RS-LD786	7.86Mtr (Includes 34 Large Panels, 33 Small Panels & Geocloth 9.0M X 2M)
RS-LD858	8.58Mtr (Includes 37 Large Panels, 36 Small Panels & Geocloth 10M X 2M)
RS-LD930	9.30Mtr (Includes 40 Large Panels, 39 Small Panels & Geocloth 10.5M X 2M)
RS-LD1000	10.00Mtr (Includes 43 Large Panels, 42 Small Panels & Geocloth 11M X 2M)
RS-LD1144	11.44Mtr (Includes 49 Large Panels, 48 Small Panels & Geocloth 12.5M X 2M)
RS-LD1287	12.87Mtr (Includes 55 Large Panels, 54 Small Panels & Geocloth 14.0M X 2M)
RS-LD1358	13.58Mtr (Includes 58 Large Panels, 57 Small Panels & Geocloth 15.0M X 2M)
RS-LD1430	14.30Mtr (Includes 61 Large Panels, 60 Small Panels & Geocloth 15.5M X 2M)
RS-LD1501	15.01Mtr (Includes 64 Large Panels, 63 Small Panels & Geocloth 16.0M X 2M)
RS-LD1573	15.73Mtr (Includes 67 Large Panels, 66 Small Panels & Geocloth 17.0M X 2M)
RS-LD1644	16.44Mtr (Includes 70 Large Panels, 69 Small Panels & Geocloth 17.5M X 2M)
RS-LD1716	17.16Mtr (Includes 73 Large Panels, 72 Small Panels & Geocloth 18.5M X 2M)
RS-LD1787	17.87Mtr (Includes 76 Large Panels, 75 Small Panels & Geocloth 19.0M X 2M)
RS-LD1859	18.59Mtr (Includes 79 Large Panels, 78 Small Panels & Geocloth 20.0M X 2M)
RS-LD1930	19.30Mtr (Includes 82 Large Panels, 81 Small Panels & Geocloth 20.5M X 2M)
RS-LD2002	20.02Mtr (Includes 85 Large Panels, 84 Small Panels & Geocloth 21.0M X 2M)
RS-LD2073	20.73Mtr (Includes 88 Large Panels, 87 Small Panels & Geocloth 22.0M X 2M)
RS-LD2145	21.45Mtr (Includes 91 Large Panels, 90 Small Panels & Geocloth 22.5M X 2M)
RS-LD2216	22.16Mtr (Includes 94 Large Panels, 93 Small Panels & Geocloth 23.5M X 2M)
RS-LD2288	22.88Mtr (Includes 97 Large Panels, 96 Small Panels & Geocloth 24M X 2M)
RS-LD2359	23.59Mtr (Includes 100 Large Panels, 99 Small Panels & Geocloth 25.0M X 2M)
RS-LD2431	24.31Mtr (Includes 103 Large Panels, 102 Small Panels & Geocloth 25.5M X 2M)
RS-LD2502	25.02Mtr (Includes 106 Large Panels, 105 Small Panels & Geocloth 26.0M X 2M)
RS-LD2574	25.74Mtr (Includes 109 Large Panels, 108 Small Panels & Geocloth 27.0M X 2M)
RS-LD2645	26.45Mtr (Includes 112 Large Panels, 111 Small Panels & Geocloth 27.5M X 2M)
RS-LD2717	27.17Mtr (Includes 115 Large Panels, 114 Small Panels & Geocloth 28.5M X 2M)
RS-LD2788	27.88Mtr (Includes 118 Large Panels, 117 Small Panels & Geocloth 29.0M X 2M)
RS-LD2860	28.60Mtr (Includes 121 Large Panels, 120 Small Panels & Geocloth 30.0M X 2M)
RS-LD2931	29.31Mtr (Includes 124 Large Panels, 123 Small Panels & Geocloth 30.5M X 2M)
RS-LD3003	30.03Mtr (Includes 127 Large Panels, 126 Small Panels & Geocloth 31.0M X 2M)
RS-LD3074	30.74Mtr (Includes 130 Large Panels, 129 Small Panels & Geocloth 32.0M X 2M)
RS-LD3146	31.46Mtr (Includes 133 Large Panels, 132 Small Panels & Geocloth 32.5M X 2M)
RS-LD3217	32.17Mtr (Includes 136 Large Panels, 135 Small Panels & Geocloth 33.5M X 2M)
RS-LD3289	32.89Mtr (Includes 139 Large Panels, 138 Small Panels & Geocloth 34.0M X 2M)
RS-LD3360	33.60Mtr (Includes 142 Large Panels, 141 Small Panels & Geocloth 35.0M X 2M)
RS-LD3432	34.32Mtr (Includes 145 Large Panels, 144 Small Panels & Geocloth 35.5M X 2M)
RS-LD3503	35.03Mtr (Includes 148 Large Panels, 147 Small Panels & Geocloth 36.0M X 2M)
RS-LD3575	35.75Mtr (Includes 151 Large Panels, 150 Small Panels & Geocloth 37.0M X 2M)
RSLD-CELL33	Leach Drain Cell (3 X Large And 3 X Small Panels) - 715 (L) X 400 (W) X 440 (H) Mm
RSLD-CELL43	Leach Drain Cell (4 X Large And 3 X Small Panels) - 715 (L) X 400 (W) X 420 (H) Mm

Standard Profile

Under Cabin Tanks



ABWT1500



ABWT2000



ABWT3000



ABWT4000



ABWT4500



ABWT6000

Features

- Heavy Duty Steel Frame
- Engineer Certified
- Certified to withstand 7000kg
- 6 sizes to suit any application
- Durable Polyethylene tanks – Will not Rust
- Certified lifting tabs
- Steel tow hooks on all sizes
- Tank pump out port available

Standard Profile Under Cabin Tanks

Code	Description (mm)
ABWT1500SF	1500Ltr under cabin waste tank (2000mm L x 2400mm W x 470mm H)
ABWT2000SF	2000Ltr under cabin waste tank (2000mm L x 2400mm W x 575mm H)
ABWT3000SF	3000Ltr under cabin waste tank (4000mm L x 2400mm W x 470mm H)
ABWT4000SF	4000Ltr under cabin waste tank (4000mm L x 2400mm W x 575mm H)
ABWT4500SF	4500Ltr under cabin waste tank (6000mm L x 2400mm W x 470mm H)
ABWT6000SF	6000Ltr under cabin waste tank (6000mm L x 2400mm W x 575mm H)



Custom Skids/Tanks

Under Cabin Tanks



Features

- Heavy Duty Steel Frame
- Custom built skid to suit your requirement with engineering available
- Tanks manufactured from durable, UV resistant polyethylene
- Custom fit nozzles to suit your requirements



Fabricated Steps to Cabin

Under Cabin Tanks



Features

All custom steps are Designed and Manufactured in accordance with AS1657 to fit any purpose required. Each project is carefully designed in accordance with Budget Restraints, purpose and always in compliance with all relevant Australian standards.

Options are

- Hot Dip Galvanised construction
- Hot dip galvanised handrail and painted for longevity
- forklift pockets
- anti slip flooring

Aluminium, Stainless & FRP options available.

Portable Tank Systems

Portable Pressure Tank Systems



Features

- Available in several capacities
- Heavy Duty galvanised steel skid frame
- Certified lifting points for crane or forklift
- Optional full UV filtration for hassle free portable water
- Durable polyethylene tanks - no rust!
- Removable pump cover
- Commercial pressure pump plumbed to tank
- Suitable for shower and washrooms, ablution buildings, kitchens/messes, construction sites and public events

Portable Tank Systems

Code	Description
PPTS2500	2500Ltr tank & skid unit including pump
PPTS3500	3500Ltr tank & skid unit including pump
PPTS4500	4500Ltr tank & skid unit including pump
PPTS9000	9000Ltr tank & skid unit including pump
PPTS-FLTR	25mm inline sediment filter option
PPTS-PUMP	Pressure pump only option - (SJ200pm) 40lpm with 3mtr x 25mm flexi poly hose
PPTS-PUMP-125	Pressure pump only option - (OP400pm15) 125lpm with 3mtr x 25mm flexi poly hose
PPTS-UV	Steriflo UV filtration system <40lpm option
PPTS-UV-125	Steriflo UV filtration system <130lpm option



Hose and Cable Floats

Hose and Cable Floats

A global industry standard for the floatation of pipes, hoses and cables in mining, marine and dredging applications. This system allows pipes to bend and flex and maintain a minimum resistance to water currents, tidal changes and windy conditions.

Mini Series

Code	Hose O/Dmm	Length	OD	Reserve Buoyancy
MTF75	10-75	600	300	26kg
MTF90	75-90	580	300	25kg
MTF130	90-130	600	300	22kg

Pallet Load

- 1200 (L) x 1200 (W) x 1700mm (H)
- 52 sets per pallet • Approx 160kg

Small Series

Code	Hose O/Dmm	Length	OD	Reserve Buoyancy
MTF160	160	900	460	132kg
MTF200	200	900	460	106kg

Pallet Load

- 1200 (L) x 1200 (W) x 2200mm (H)
- 12 sets per pallet • Approx 240kg

Medium Series

Code	Hose O/Dmm	Length	OD	Reserve Buoyancy
MTF250	250	1000	670	240kg
MTF315	315	1000	670	212kg

Pallet Load (250-315)

- 1200 (L) x 1200 (W) x 2300mm (H)
- 7 sets per pallet • Approx 140kg

Large Series

Code	Hose O/Dmm	Length	OD	Reserve Buoyancy
MTF355	355	1000	800	200kg
MTF450	450	1050	1300	680kg
MTF480	480	1050	1300	650kg
MTF630	630	1160	1160	560kg

Pallet Load

- 1200 (L) x 1200 (W) x 2200mm (H)
- 2 sets per pallet • Approx 160kg

Mega Series

Code	Pipe O/Dmm	Length	OD	Reserve Buoyancy
MTF1100	1100	2500	2300	5.5T
MTF1650	1650	2600	2500	6T

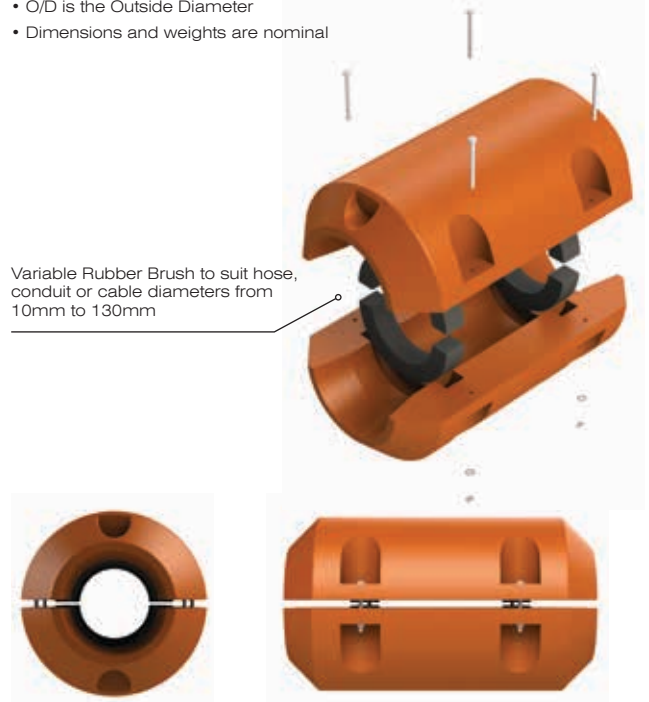
Pallet Load

- 2500 (L) x 2500 (W) x 2600mm (H)
- 1 set per pallet • Approx 260kg

Features

- Manufactured in Australia to international standards
- Tough hexene polyethylene for maximum service life
- Fully UV stabilised for protection against degradation
- Galvanised fasteners for long life
- Recessed ribs for added strength
- Chamfered openings for flexibility
- Chemical resistant allowing diverse applications
- Available in a wide range of sizes and very easy to install.

- Reserve Buoyancy is the weight the float will carry before full submergence
- O/D is the Outside Diameter
- Dimensions and weights are nominal



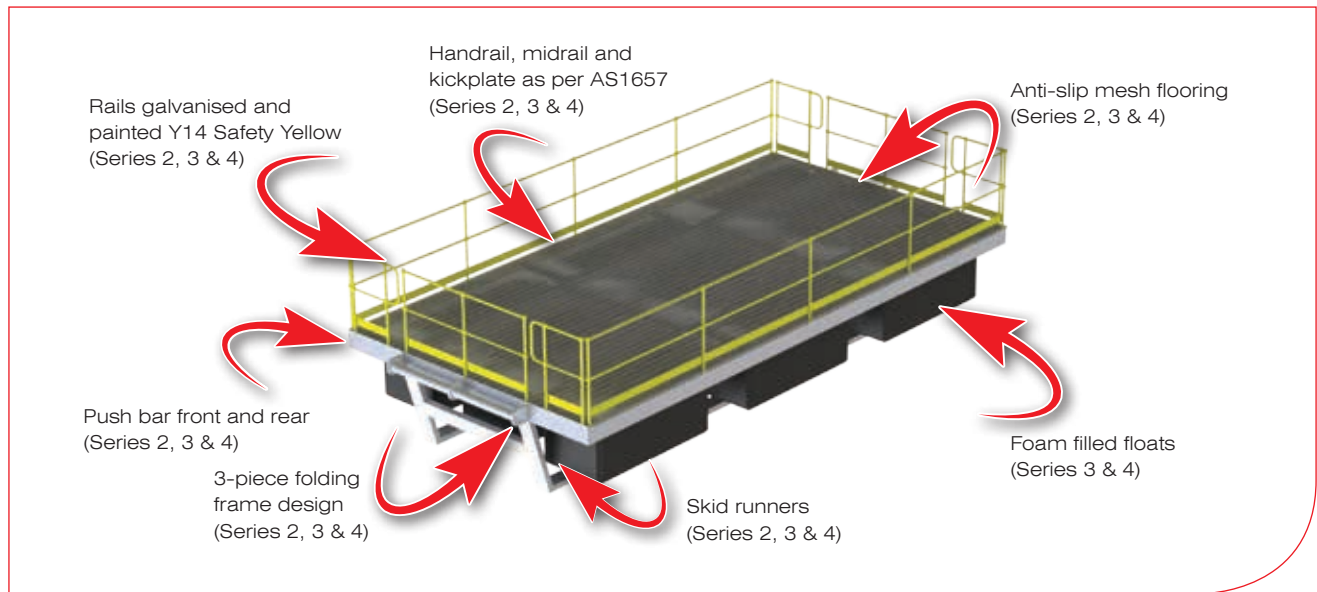
Optional Extras

- Foam reducing bushes
- Floats foam filled
- Stainless steel fastener kit
- GRP Kits
- Chain Kits



Heavy Duty Pontoons

Pontoons & Floating Walkway



Heavy Duty Pontoons

Code	Description
PNT3000-02	Series 2 Heavy Duty Pontoon to carry 3T Live Load
PNT3000-03	Series 3 Heavy Duty Pontoon to carry 3T Live Load
PNT3000-04	Series 4 Heavy Duty Pontoon to carry 3T Live Load
PNT5000-02	Series 2 Heavy Duty Pontoon to carry 5T Live Load
PNT5000-03	Series 3 Heavy Duty Pontoon to carry 5T Live Load
PNT5000-04	Series 4 Heavy Duty Pontoon to carry 5T Live Load
PNT10000-02	Series 2 Heavy Duty Pontoon to carry 10T Live Load
PNT10000-03	Series 3 Heavy Duty Pontoon to carry 10T Live Load
PNT10000-04	Series 4 Heavy Duty Pontoon to carry 10T Live Load
PNT12000-02	Series 2 Heavy Duty Pontoon to carry 12T Live Load
PNT12000-03	Series 3 Heavy Duty Pontoon to carry 12T Live Load
PNT12000-04	Series 4 Heavy Duty Pontoon to carry 12T Live Load
PNT15000-02	Series 2 Heavy Duty Pontoon to carry 15T Live Load
PNT15000-03	Series 3 Heavy Duty Pontoon to carry 15T Live Load
PNT15000-04	Series 4 Heavy Duty Pontoon to carry 15T Live Load
PNT18000-02	Series 2 Heavy Duty Pontoon to carry 18T Live Load
PNT18000-03	Series 4 Heavy Duty Pontoon to carry 18T Live Load
PNT18000-04	Series 4 Heavy Duty Pontoon to carry 18T Live Load
PNT20000-02	Series 2 Heavy Duty Pontoon to carry 20T Live Load
PNT20000-03	Series 3 Heavy Duty Pontoon to carry 20T Live Load
PNT20000-04	Series 4 Heavy Duty Pontoon to carry 20T Live Load
PNT25000-02	Series 2 Heavy Duty Pontoon to carry 25T Live Load
PNT25000-03	Series 3 Heavy Duty Pontoon to carry 25T Live Load
PNT25000-04	Series 4 Heavy Duty Pontoon to carry 25T Live Load

Features

- Heavy duty galvanised frame
- Y14 Painted handrail to AS1657
- Modular for transport
- Anti-slip decking
- Heavy duty push bars and lifting points
- Can be designed to support any weight or to suit any application

Features

Features	Series 2	Series 3	Series 4
Three piece folding frame design	✓	✓	✓
Foam filled floats		✓	✓
Skid runners	✓	✓	✓
Anchor posts on 4 corners		✓	✓
Anti-slip mesh decking	✓	✓	✓
Mounting points for pump unit		✓	✓
Hand, knee and kick rail	✓	✓	✓
Access gate	✓	✓	✓
Galvanized pontoon frame	✓	✓	✓
Painted pontoon frame		✓	✓
Galvanized and painted handrail	✓	✓	✓
Certified lifting lugs	✓	✓	✓
Push bar - front and rear	✓	✓	✓
Minespec reflective tape			✓
Mounting bracket for sub board (optional)			✓



Donut Pontoon with Pump Cradle

Pontoons & Floating Walkways



PNT-R-01

Features

- Manufactured from UV stabilised polyethylene
- Hi visibility yellow
- Chemical resistant
- Range to suit up to 1.5T Submersible Pump
- All metal components hot dip galvanised to ensure longevity

Donut Pontoon - with Pump Cradle

Code	Description
PNT-R-01	Submersible Pump Float To House a pump up to a max diameter of 554mm as standard. Larger Available Please Specify Pump Dia.
PNT-R-02	Submersible Pump Float To House a pump up to a max diameter of 554mm as standard. Comes with Skid Legs Larger Available Please Specify Pump Dia.
PNT-R-03	Submersible Pump Float To House a pump up to a max diameter of 554mm as standard. Comes with Skid Legs and Stabilising Frame on Top of Float. Larger Available Please Specify Pump Dia.



PNT-R-02



PNT-R-03

Upgrade to Side Discharge

Code	Description
PNT-R-SD	Custom Modifications To Donut Pontoon To Suit Side Discharge Submersible Pump



PNT-R-SD

Donut Pontoon suits suspended pump

Pontoons & Floating Walkways



Features

- Manufactured from UV stabilised polyethylene
- Hi visibility yellow
- Chemical resistant
- Range to suit up to 1.5T Submersible Pump
- All metal components hot dip galvanised to ensure longevity

Donut Pontoon suits suspended pump

Code	Description
PNT-D-01	1000MM (D) X 500MM (H) Floatation Module Including Galvanised Bracket
PNT-D-02	1800MM (D) X 500MM (H) Floatation Module Including Galvanised Bracket
PNT-D-03	1800MM (D) X 1000MM (H) Floatation Module Including Galvanised Bracket

Poly Pontoons

Pontoons & Floating Walkways



Features

- All Poly Construction
- UV and Chemical Resistant
- Light weight
- Custom Designs Available
- Optional Anti-Vortex (as pictured)
- Optional Strainer Box

Poly Pontoons

Code	Description
PNT-P-100	All poly pontoon to support 100kg bore pump
PNT-P-200	All poly pontoon to support 200kg bore pump
PNT-P-400	All poly pontoon to support 400kg bore pump
PNT-P-600	All poly pontoon to support 600kg bore pump
PNT-P-800	All poly pontoon to support 800kg bore pump
PNT-P-1000	All poly pontoon to support 1000kg bore pump



Custom Build to Suit Vertical Bore Pump



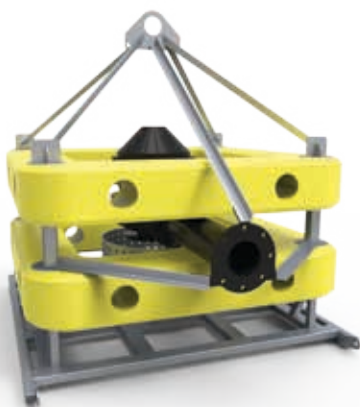
With Pump Shroud
(Optional Extra)



With Skid Legs
(Optional Extra)

Modular Pontoons

Pump Pontoons



Features

- Modular Floats
- Floats manufactured from UV Resistant Polyethylene
- Chemical resistant
- Modular Construction to support up to 5T
- Ease of Handling (Lift, Pull, Skid)

Modular Pontoons

Code	Description
PNT-M-01	Frame construction including one modular float
PNT-M-02	Modular float
PNT-M-03	Modular float joiners

Pump Pits

Pump Pits



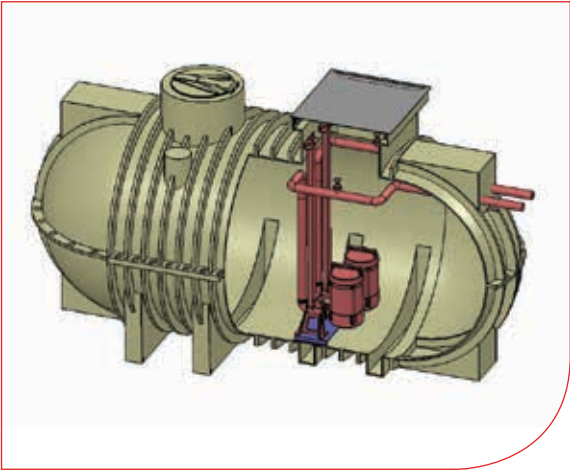
Features

- Manufactured from Durable Polyethylene
- Engineered Design
- Chemical and Effluent resistant
- Lightweight (ease of installation)
- Various manhole options
- Lifting lugs
- Sump base
- Levelling legs (ease of installation) including tie down/anchor points for high water table applications
- Suitable for a wide range of pumps
- Easy access to pumps
- Range of lid options available
- Designed in compliance with AS2865 & AS1657 (for access)

Pump Pits	
Code	Description (mm)
PP-1000	1000Ltr Poly Pump Pit
PP-1500	1500Ltr Poly Pump Pit
PP-3000	3000Ltr Poly Pump Pit
PP-4000	4000Ltr Poly Pump Pit

Lift Stations

Lift Stations



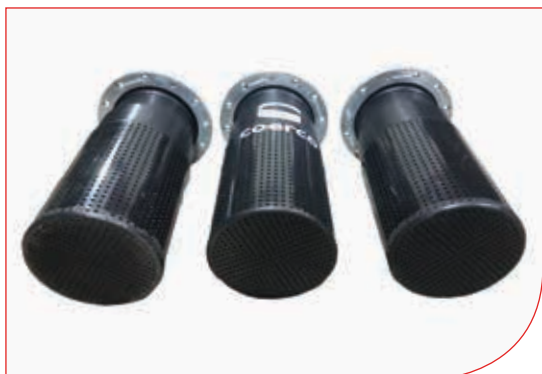
Features

- Custom build to suit any pump size or design
- Fully tested one piece tough poly tank
- Chemical and impact resistant
- Manufactured from durable, light weight polyethylene
- Ease of installation

*pumps for illustration purpose only

Poly Strainers

Industrial Pump Accessories



Features

- Fully constructed from tough high density polyethylene (HDPE)
- Corrosion resistant
- Prevent pump damage – reduce wear and tear of pumps
- Large open screen surface area that won't restrict flow rates
- Anti-vortex vanes
- Draw down inlet stub provides better suction
- Flange sized to suit each installation (Table D, Table E, DIN & ANSI)
- Sizes range from 100mm to 500mm
- Skid bases for liner protection are an optional and easy add on

Poly Strainer

Description
Sizes Range from 100mm - 500mm

Foot Valves

Industrial Pump Accessories



Features

- Fully constructed from tough high-density polyethylene (HDPE)
- Corrosion resistant
- Prevent pump damage – reduce wear and tear of pumps
- Large open screen surface area that won't restrict flow rates
- Anti-vortex vanes
- Draw down inlet stub provides better suction
- Flange sized to suit each installation (Table D, Table E, DIN & ANSI)
- Sizes range from 100mm to 500mm
- Skid bases for liner protection are an optional and easy add on
- Includes Non-Return Valve between strainer and flange to keep pump primed at all times

Poly Strainer

Description
Sizes Range from 100mm - 500mm

