



Volkswagen

Hello Fuel Included,

# Which one will you choose?

**Passat GTE PHEV TSI 218ps 4 door DSG**  
Blue-e-Motion

<http://vw.co.uk/s/23wut>



**Passat GTE Advance PHEV TSI 218ps 4 door**  
DSG Blue-e-Motion

<http://vw.co.uk/s/23jf8>

Share your new cars on



Your

# Passat choices

This is your personalised brochure for your Passat choices. It comes complete with your specifications and features configured with us today. Feel free to get in touch anytime if you have any questions.

	<b>Passat GTE</b> PHEV TSI 218ps 4 door DSG Blue-e-Motion	<b>Passat GTE</b> Advance PHEV TSI 218ps 4 door DSG Blue-e-Motion
<b>Total</b>	<b>£37,015</b>	<b>£40,670</b>



## Changed your mind?

That's an easy change to make, whether you fancy another colour or decide to add that optional extra you wanted. Our configuration code links to each car in our online website configurator so you can make as many changes as you need.

Your

# Specifications

**Passat GTE**  
PHEV TSI 218ps 4 door  
DSG Blue-e-Motion

**Passat GTE**  
Advance PHEV TSI 218ps  
4 door DSG Blue-e-  
Motion

## Engine & transmission

Fuel type	Plug-in Hybrid Battery Electric Vehicle	Plug-in Hybrid Battery Electric Vehicle
Engine capacity	1.4 litre 218ps	1.4 litre 218ps
Wheel drive	2wd	2wd
BlueMotion	YES	YES
Transmission	6 Speed auto DSG	6 Speed auto DSG

## Emissions

CO2 emissions	40g/km^	40g/km^
CO2 emissions class	EURO 6	EURO 6
AdBlue†	NO	NO

## Performance

Acceleration (0 - 62mph)	7.4 secs	7.4 secs
Maximum speed	140mph	140mph
Maximum power	218ps at 5000rpm	218ps at 5000rpm
Maximum torque	184lbs.ft at 1500rpm	185lbs.ft at 1500rpm

## Dimensions

Number of doors	4	4
Style	Saloon	Saloon
Length	4767mm	4767mm
Width	1832mm	1832mm
Height	1456mm	1456mm

## Tax and insurance

Insurance group	26E	26E
VED	£0	£0

## Fuel economy

Urban	N/A mpg*	N/A mpg*
Extra urban	N/A mpg*	N/A mpg*
Combined	156.9 mpg*	156.9 mpg*

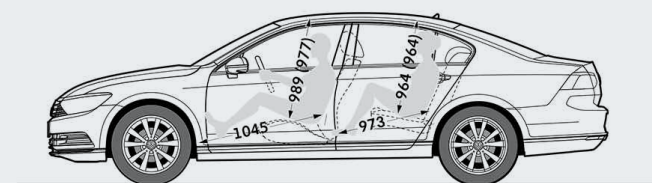
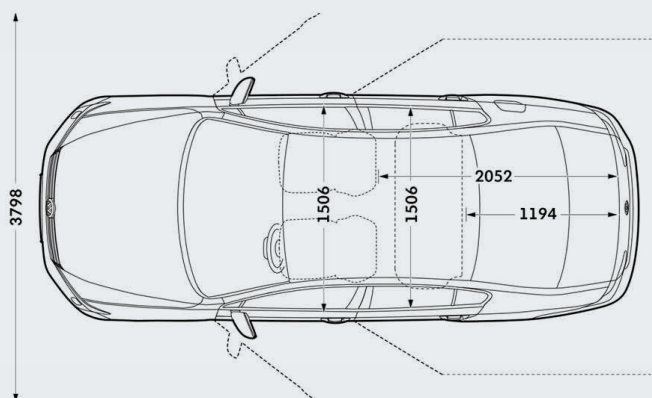
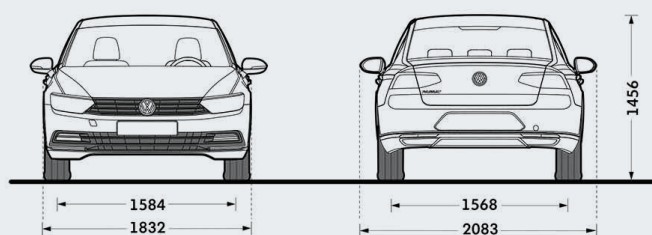
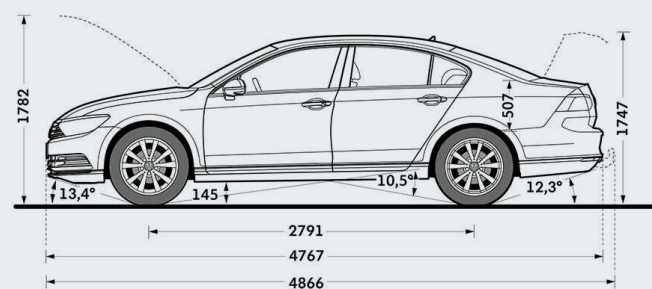
\*This information should be used for illustration purposes only. Standard EU Test figures for comparative purposes, may not reflect real driving results.

^The 'combined/weighted' fuel consumption / CO2 figures are calculated from two test results: one when the high voltage battery is fully charged and another when the high voltage battery is discharged. The two results are a weighted average, taking into account mileage range on battery power only, providing a figure in a variety of charge conditions. Extended range achieved by 1.4 TSI petrol engine generating electricity. Fuel consumption and CO2 emissions figures are obtained under standardised test conditions (Directive 93/116/EEC) using a representative model. This allows direct comparison between different models from different manufacturers, but may not represent the actual fuel consumption achieved in 'real world' driving conditions. Electricity is mains sourced and emissions are while driving. More information is available at [www.dft.gov.uk/vca](http://www.dft.gov.uk/vca).

† Some Volkswagen diesel engines are AdBlue. AdBlue is a water / urea based additive that cleans exhaust gases to comply with EU6 exhaust emissions regulations. AdBlue will need to be topped up but frequency will be dependent on mileage and driving style. AdBlue top-ups at authorised repairers are extremely competitive and charge by the litre so you only pay for what you need.

Your

# Dimensions



Applicable to

Passat GTE PHEV TSI 218ps 4 door DSG Blue-e-Motion  
Passat GTE Advance PHEV TSI 218ps 4 door DSG Blue-e-Motion

Your

# Standard features

## Passat GTE

PHEV TSI 218ps 4 door  
DSG Blue-e-Motion  
<http://vw.co.uk/s/23wut>

## Passat GTE

Advance PHEV TSI 218ps  
4 door DSG Blue-e-  
Motion  
<http://vw.co.uk/s/23jf8>

---

### Overview

Base price

£37,015

£40,670

### Key features

Adaptive Cruise Control  
(ACC)

Air conditioning - 3-zone  
automatic climate  
control with an  
improved anti-allergen  
filter

Discover Navigation  
System (DNS)

ergoComfort front seats

Front fog lights

Heat insulating, tinted  
glass from B pillar  
backwards - 65%

Multifunction colour  
display

Rear LED Lights with  
dynamic lighting effect

Two charging cables

Adaptive Cruise Control  
(ACC)

Air conditioning - 3-zone  
automatic climate  
control with an  
improved anti-allergen  
filter

Discover Navigation  
System (DNS)

ergoComfort front seats

Front fog lights

Heat insulating, tinted  
glass from B pillar  
backwards - 65%

Multifunction colour  
display

Rear LED Lights with  
dynamic lighting effect

Two charging cables

---

Your

# Standard features

**Passat GTE**  
PHEV TSI 218ps 4 door DSG  
Blue-e-Motion  
<http://vw.co.uk/s/23wut>

**Passat GTE**  
Advance PHEV TSI 218ps 4  
door DSG Blue-e-Motion  
<http://vw.co.uk/s/23jf8>

## All features

### Service

12-year body protection warranty	•	•
3-year paintwork warranty	•	•
3-year/60,000 miles warranty (which ever is soonest)	•	•
Volkswagen Roadside Assistance	•	•

### Wheels and Suspension

Alloy wheels, 18" Monterey	£105	•
Alloy wheels, 18" Oxford Anthracite	•	—
Brake calipers in blue	•	•
Tyre Mobility set	•	•

### Exterior

Urano Grey	•	•
Black radiator grille with chrome trimmed louvres and blue strip and GTE nameplate	•	•
Body coloured bumpers with decorative trim	•	•
Body coloured door mirrors and door handles with integrated indicators	•	•
Chrome side window surrounds	•	•
Decorative trims on lower part of car, front, side, and rear in Chrome	•	•
Gloss black pillar trim	•	•
Automatic "Leaving Home" and manual "Coming Home" feature	•	•
Dusk sensor with automatic driving lights	•	•
Headlight washers	—	•
LED Headlights with Daytime Running Lights	•	—

- Standard
- Not available
- £ Optional

† For this model, there are multiple standard options to choose from.

Your

# Standard features (cont)

	Passat GTE PHEV TSI 218ps 4 door DSG Blue-e-Motion <a href="http://vw.co.uk/s/23wut">http://vw.co.uk/s/23wut</a>	Passat GTE Advance PHEV TSI 218ps 4 door DSG Blue-e-Motion <a href="http://vw.co.uk/s/23jf8">http://vw.co.uk/s/23jf8</a>
LED Premium Headlights with LED Daytime Running Lights and dynamic cornering light	£510	•
Rear LED Lights with dynamic lighting effect	•	•
Rear number plate lights incorporating LED technology	•	•
Separate daytime running lights	•	•
Unique C signature GTE front LED daytime running lights in bumper	•	•
Heat insulating, tinted glass from B pillar backwards - 65%	•	•
<b>Interior</b>		
Load lashing points in luggage compartment x 4	•	•
Luggage compartment cover, removeable	•	•
Luggage compartment light	•	•
Glove compartment lockable, illuminated and with cooling capacity	•	•
Map pockets on the backs of front seats	•	•
Storage compartment in all doors with holder for 1.0ltr bottle on driver side and 1.5ltr bottle on the front passenger side	•	•
Storage compartment with flap in roof console	•	•
Two front cup holders with covers	•	•
Blue Ambient lighting	•	•
Carpet mats	•	•
Decorative inserts, aluminium 'Wave'	•	•
Alcantara/Leather St Tropez†	•	—
Alcantara/Leather Titan Black†	•	—
Leather 'Nappa' Titan Black†	£695	•
12V sockets in front centre console and in the luggage compartment	•	•

- Standard
- Not available
- £ Optional

† For this model, there are multiple standard options to choose from.

Your

# Standard features (cont)

	Passat GTE PHEV TSI 218ps 4 door DSG Blue-e-Motion <a href="http://vw.co.uk/s/23wut">http://vw.co.uk/s/23wut</a>	Passat GTE Advance PHEV TSI 218ps 4 door DSG Blue-e-Motion <a href="http://vw.co.uk/s/23jf8">http://vw.co.uk/s/23jf8</a>
Analogue clock	•	•
Exterior temperature gauge and frost warning function	•	•
Gearshift knob in leather	•	•
Interior lighting with LED technology	•	•
Rear seat bench not split, backrest split folding 60:40, with centre armrest with 2 cup holders, load-through hatch and rear seat backrest with remote unlocking from luggage compartment	•	•
Steering column with height and longitudinal adjustment	•	•
Steering wheel leather, multifunction and gear knob with blue stitching, with paddleshift	•	•
<b>In Car Entertainment and Communication</b>		
Bluetooth telephone connectivity	•	•
Car-Net App-Connect	£165	•
Car-Net e-remote Mobile Online Services app	•	•
Car-Net Guide and Inform Plus	–	•
Discover Navigation System (DNS)	•	•
Discover Pro DVD nav/radio system (DNS PRO) with Gesture Control	£855	•
MDI Multi Device Interface	•	•
Voice Activation	£180	•
Volkswagen Media Control	•	•
<b>Safety and Security</b>		
eCall and Security with Service Plus	•	•
First aid kit and warning triangle	•	•
Front assist including City Emergency Braking	•	•
3 rear head restraints, all height adjustable	•	•

- Standard
- Not available
- £ Optional

† For this model, there are multiple standard options to choose from.



Your

# Standard features (cont)

	Passat GTE PHEV TSI 218ps 4 door DSG Blue-e-Motion <a href="http://vw.co.uk/s/23wut">http://vw.co.uk/s/23wut</a>	Passat GTE Advance PHEV TSI 218ps 4 door DSG Blue-e-Motion <a href="http://vw.co.uk/s/23jf8">http://vw.co.uk/s/23jf8</a>
3 rear three-point seatbelts	•	•
ABS (Anti-lock Braking System)	•	•
Airbags - Curtain airbag system	•	•
Airbags - Driver and front passenger's airbags including driver's knee airbag	•	•
Automatic Post-Collision Braking System	•	•
Driver and front passenger safety optimised head restraints	•	•
ESC (Electronic Stability Control)	•	•
Front three-point seat belts with height adjustment and seat belt tensioners	•	•
Isofix child seat preparation	•	•
Pre-crash preventive occupant protection	•	•
Warning indicator in multifunction display if seatbelts are unfastened	•	•
Warning light for when doors and luggage compartment are ajar	•	•
Warning reflectors in all doors	•	•
Alarm with interior monitoring	•	•
Central locking system	•	•
Electronic engine immobiliser	•	•
Disc brakes, front and rear	•	•
Galvanised body	•	•
High level 3rd brake light	•	•
Misfuelling prevention	•	•
Tyre pressure loss indicator	•	•
<b>Comfort and Convenience</b>		
Air conditioning - 3-zone automatic climate control with an improved anti-allergen filter	•	•

- Standard
- Not available
- £ Optional

† For this model, there are multiple standard options to choose from.

Your

# Standard features (cont)

	Passat GTE PHEV TSI 218ps 4 door DSG Blue-e-Motion <a href="http://vw.co.uk/s/23wut">http://vw.co.uk/s/23wut</a>	Passat GTE Advance PHEV TSI 218ps 4 door DSG Blue-e-Motion <a href="http://vw.co.uk/s/23jf8">http://vw.co.uk/s/23jf8</a>
Door mirrors, electrically foldable	•	•
ergoComfort front seats	•	•
Front and rear electric windows	•	•
Front centre armrest with storage compartment	•	•
Front seats with height adjustment	•	•
Heated front seats	•	•
Lumbar support for front seats	•	•
One-touch indicator signal	•	•
Premium front comfort seats	•	•
Service interval display	•	•
Convenience pack	•	•
LED entrance/warning lights in front doors	•	•
White instrument lighting	•	•
Automatic dimming interior rear-view mirror	•	•
Heated rear window	•	•
Panoramic sunroof	£945	•
Sun visors, front, with illuminated vanity mirror with LED technology	•	•
Heated windscreen washer nozzles	•	•
Windscreen wipers with intermittent wipe and rain sensor	•	•

- Standard
- Not available
- £ Optional

† For this model, there are multiple standard options to choose from.

Your

# Standard technologies

Here are some of the clever technologies that are standard in some of your configurations. Find out more by following the links where available.



## ♥ Adaptive Cruise Control (ACC)



Adaptive Cruise Control keeps your car at a safe distance from the vehicle in front.

<https://youtu.be/uJmYVrEFIFQ>



## Area View



Keep an eye on everything from the driver's seat.

<https://youtu.be/xzyNhrH4qfQ>



## ♥ Auto Hold



An extension of our electronic parking brake system that stops your car accidentally rolling back if you stop on a hill.

[https://youtu.be/PjrPK7ECD\\_0](https://youtu.be/PjrPK7ECD_0)



## BlueMotion Technologies



Lower emissions, greater economy.



## Car-Net



Car-Net refers to everything related to in-car internet connectivity in Volkswagen vehicles.

<https://youtu.be/NdqxvPxsOgQ>



## Car-Net



Car-Net refers to everything related to in-car internet connectivity in Volkswagen vehicles.

<https://youtu.be/NdqxvPxsOgQ>

Your

# Standard technologies (cont)

Here are some of the clever technologies that are standard in some of your configurations. Find out more by following the links where available.



## ♥ City Emergency Braking



The City Emergency Braking system is an innovative safety technology.

<https://youtu.be/SITCsd56bXM>



## Driver Alert System



Our new Driver Alert System gives early warning of when you need to take a break on long and tiring journeys, making motorway driving safer.

<https://youtu.be/WqR3YbjxyS0>

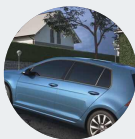


## ♥ DSG



Our dual-clutch gearboxes offer the ease of an automatic with the responsiveness and economy of a manual.

<https://youtu.be/ILGxWLlxYG0>

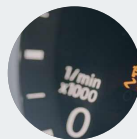


## ♥ Electronic Parking Brake



Lets you park quickly and easily - at the touch of a button.

<https://youtu.be/lhvaZ-pSWDI>

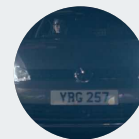


## ♥ ESC



Our advanced Electronic Stability Control detects critical situations to stop skidding before it begins.

<https://youtu.be/jpGLRf2NU3w>



## ♥ Home Safe Lights



The 'coming home' and 'leaving home' functions are designed to improve your convenience and comfort.

<https://youtu.be/5VsJEJAZwGE>

Your

# Standard technologies (cont)

Here are some of the clever technologies that are standard in some of your configurations. Find out more by following the links where available.



## ♥ Isofix child seat fixings



Your child's safety is a priority - for us, as well as for you. That's why we use Isofix child seat fixings in all our cars.

<https://youtu.be/TBSd5NL07LU>

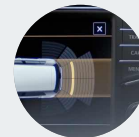


## ♥ Misfuel Prevention device



Prevents you from putting in the wrong fuel into your Volkswagen.

<https://youtu.be/qLAfTzgqAx4>

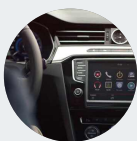


## ♥ Parking Sensors



Parking sensors make reversing into tricky spaces easier and help prevent minor damage to your car.

[https://youtu.be/kxsuv\\_t5XIY](https://youtu.be/kxsuv_t5XIY)



## ♥ Proactive occupant protection



Front is standard, Rear is optional and is included with the addition of Emergency assist or Side Assist Plus options.

<https://youtu.be/AwHGloYqC1s>



## ♥ Rear View Camera



See behind your car with a camera in your boot.

<https://youtu.be/FU3-mjiF4b0>



## ♥ Start/Stop Technology



We think that sitting in traffic is bad enough without knowing that you have to pay for it too. That's why we created Start/Stop Technology, a really simple way of helping you to save money whenever you come to a stop.

<https://youtu.be/xHOvyQu57cc>

Your

# Standard technologies (cont)

Here are some of the clever technologies that are standard in some of your configurations. Find out more by following the links where available.



♥ TSI

1

2

Our award-winning TSI technology offers you great performance with fuel economy and low emissions. Our turbocharged engines deliver more power when you need it and use less fuel when you don't.

<https://youtu.be/M9piiq2Grd8>

1

**Passat GTE PHEV TSI 218ps 4 door**  
DSG Blue-e-Motion

2

**Passat GTE Advance PHEV TSI**  
218ps 4 door DSG Blue-e-Motion

Your

# Exterior choices

## Passat GTE

PHEV TSI 218ps 4 door DSG Blue-e-Motion



Urano Grey

Standard



## Alloy wheels, 18" Oxford

### Anthracite

Four 8J x 18" 'Oxford Anthracite' alloy wheels with 235/45 ContiSeal (self-sealing) R18 tyres, anti-theft wheel bolts, and blue calipers

Standard

---

## Passat GTE

Advance PHEV TSI 218ps 4 door DSG Blue-e-Motion



Urano Grey

Standard



## Alloy wheels, 18" Monterrey

Four 8J x 18" 'Monterrey' alloy wheels with 235/45 ContiSeal (self-sealing) R18 tyres and anti-theft wheel bolts and blue calipers

Standard

Your

# Interior choices

## Passat GTE

PHEV TSI 218ps 4 door DSG Blue-e-Motion



Alcantara/Leather Titan Black

Seat trim covers in Alcantara / leather Titan Black, bolsters and centre armrest surfaces in 'Vienna' leather, door trim panel with leather appearance, armrest with decorative stitching  
Standard



## Discover Navigation System (DNS)

8" colour touch-screen control system for navigation, CD and radio functions. Preloaded European navigation data, 2D/2,5D map view, three calculated routes (Fast, Short, Eco), dynamic navigation based on TMC, branded points of interest and Traffic Sign display. (Includes navigation software updates for a period of three years, please contact your authorised Volkswagen retailer for full details). Features Car-Net online services

Standard

---

## Passat GTE

Advance PHEV TSI 218ps 4 door DSG Blue-e-Motion



Leather 'Nappa' Titan Black

Leather 'Nappa' Titan Black  
Standard



## Discover Navigation System (DNS)

8" colour touch-screen control system for navigation, CD and radio functions. Preloaded European navigation data, 2D/2,5D map view, three calculated routes (Fast, Short, Eco), dynamic navigation based on TMC, branded points of interest and Traffic Sign display. (Includes navigation software updates for a period of three years, please contact your authorised Volkswagen retailer for full details). Features Car-Net online services

Standard



Your

# Chosen options

## Passat GTE

PHEV TSI 218ps 4 door  
DSG Blue-e-Motion

## Passat GTE

Advance PHEV TSI 218ps 4  
door DSG Blue-e-Motion



### Alloy wheels, 18" Monterrey

Four 8J x 18" 'Monterrey' alloy wheels with 235/45 ContiSeal (self-sealing) R18 tyres and anti-theft wheel bolts and blue calipers

£105

• ✓



### Alloy wheels, 18" Oxford Anthracite

Four 8J x 18" 'Oxford Anthracite' alloy wheels with 235/45 ContiSeal (self-sealing) R18 tyres, anti-theft wheel bolts, and blue calipers

• ✓

—



### Urano Grey

• ✓

• ✓



### Alcantara/Leather Titan Black

Seat trim covers in Alcantara / leather Titan Black, bolsters and centre armrest surfaces in 'Vienna' leather, door trim panel with leather appearance, armrest with decorative stitching

• ✓

—



### Leather 'Nappa' Titan Black

Leather 'Nappa' Titan Black

£695

• ✓



### Steering wheel leather, multifunction and gear knob with blue stitching, with paddleshift

Steering wheel leather, multifunction and gear knob with blue stitching, with paddleshift

• ✓

• ✓

- Standard
- Not available
- £ Optional
- ✓ Selected
- ♥ Liked

Your

# Chosen options (cont)

## Passat GTE

PHEV TSI 218ps 4 door  
DSG Blue-e-Motion

## Passat GTE

Advance PHEV TSI 218ps 4  
door DSG Blue-e-Motion



### Discover Navigation System (DNS)

8" colour touch-screen control system for navigation, CD and radio functions. Preloaded European navigation data, 2D/2,5D map view, three calculated routes (Fast, Short, Eco), dynamic navigation based on TMC, branded points of interest and Traffic Sign display. (Includes navigation software updates for a period of three years, please contact your authorised Volkswagen retailer for full details). Features Car-Net online services

• ✓

• ✓



### Active Info Display

12 inch high resolution TFT dash display screen with customisable menus and information.

£585

• ✓

## Recommended packs and accessories

Curious to see packs, accessories and what's popular? See our extras available in our online configurator

- Standard
- Not available
- £ Optional
- ✓ Selected
- ♥ Liked

<http://www.volkswagen.co.uk/new/passat-viii/configure/extras/2392/2393>

<http://www.volkswagen.co.uk/new/passat-viii/configure/extras/2392/2408>