

EN-SUITE OPERATION AND MAINTENANCE INSTRUCTIONS

SII003, REVISION 1



The load release en-suite doors in this unit remove all known ligature points.

- They offer privacy and dignity, enabling partial observations (head and feet check).
- In day-to-day use the leaves will rarely detach.
- The leaves detach on ligature attempt (approximately 8kg). Load release is the only safe option to prevent ligatures. Impossible to remove ligature risk with solid, permanently attached door.
- The staff-only reset (using the Lifeline key) is optional at point of purchase. It's designed to disrupt the ligature learning process - when a service user uses multiple attempts to practice their technique.
- The staff-only reset also informs clinical risk assessment by highlighting when ligature attempts have occurred.

STAFF-ONLY RESET: HOW TO ATTACH THE LEAF



STEP 1

With the leaf positioned **across** the doorway, offer up the leaf to the top pivot.

NOTE – the door **must** be in the closed (zero degrees) position when reattaching it.



STEP 2

While holding the leaf in place, insert the Lifeline key and turn it in either direction.

You'll hear an audible click when the magnet engages.



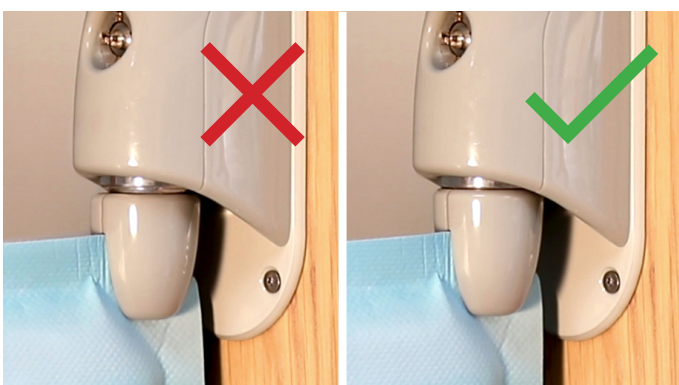
STEP 3

Align the bottom pivot with the bottom magnet.



STEP 4

Test the leaf by opening to 90 degrees.



STEP 5

Make sure the nibs are attached properly by swinging the door back and forth.



Watch the full video here:
www.shp.help/es-reset

FURTHER ASSISTANCE

Contact us at info@safehingeprimera.com or speak to the on-site product champion(s):

MAINTENANCE AND CLEANING

CLEANING THE DOOR LEAVES AND FRAME PIVOTS

Do not use solvents, neat bleach, phenolic based cleaning solutions or abrasive products to clean the door leaves or frame pivots.

All surfaces to be wiped down with cleaning wipes or a disposable soft cloth moistened with a mild detergent diluted in warm water. The wipe/cloth should be changed during the cleaning process if it becomes soiled.

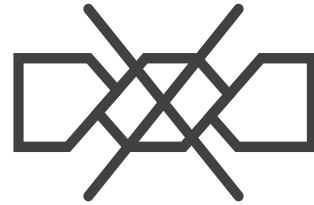
For the door leaves:



Do Not
Bleach



Hand
Wash



Do Not
Wring

MAINTENANCE

Door leaves and pivots should be checked for proper condition on a regular basis.

Any loose parts / poor condition should be reported and parts replaced / fixed as required.