

Fitting instructions

Safehinge™ unique tamper proof acoustic threshold seal. Part of the Symphony range of doorset products for Mental Health environments.

LAS9990 SUREsound



Length: 1m.....

Contents

Wrap around
silicone seal x 1
Multiple double fin
seal sections
Screw pack containing
tamper-proof fixings x 1

Tools required

Router
24mm cutter
Screwdriver
Drill

Recommended to be used in conjunction
with a LAS4002 threshold plate

For further information about our
products please visit our website

www.lorientgroup.com

t: +44 (0)1626 834252
f: +44 (0)1626 833166
e: mktg@lorientuk.com

For use exclusively with
Safehinge ALUmax or ALUmax
+SUREclose (ALU60/54mm) doors

Specification

Description: Unique tamper-proof acoustic threshold seal. SUREsound uses two seal sections; one to cover the main section of door and one to cover the pivot strap. The front seal comes with a double, staggered fin design to permit numerous screw fixings while achieving optimal acoustic rating.

Door type: 54mm, single / double swing and anti-ligature doors. For rebated doors.

Fire rating: FD60.

Product usage: Ideal for low / medium secure mental health, old age psychiatry and other environments where safety is of primary concern.

NOTES: 10mm gap at threshold is required - LAS4002 threshold plate is 6mm high and a 4mm gap must be left between the bottom of the door and the threshold plate.

Each double fin seal section = 150mm length as standard - short sections can be cut to size as required.

Please note: Recommendations as to methods, use of materials and construction details are based on the experience and knowledge of Lorient and are given in good faith as a general guide and service to designers, contractors and manufacturers. Lorient reserves the right to make alterations or delete installation detail without prior notice.

A: Front seal

1. LAS9990 is fixed to the underside of the door using a series of tamper-proof screws (provided).

The design is based on the anti-ligature door, with the rubber seals supplied in small sections. These fit into the unique aluminium carrier from the top and securely clamp in place on the door using staggered anti-tamper screws.

2. When routing for the carrier please ensure the groove extends just 3mm into the lipping, but does not breach the leading edge.

The routed groove must be 24mm wide and 9mm deep.



3. For total reassurance, rubber fins are inserted top-down from the top of the aluminium carrier, then clamped in place when acoustic threshold seal is fitted to door with anti-tamper fixings.



Please refer to the Safehinge™ website for ALUmax or ALUmax + SUREclose fitting instructions within the Symphony range for further information.
www.safehinge.com/tech

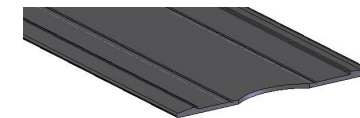
B: Pivot strap seal

1. Align and position the wrap-around silicone seal over the groove.

Push fit the pivot strap into the routed rebate.

Drill and screw fix through the seal.

NOTE: The pivot strap groove must be 24mm wide and 9mm deep.



2. The pivot strap seal contacts the threshold plate at a lower point compared to the front gaskets due to the wider position of the seal blades.



Lorient Polyproducts Ltd
Endeavour House Fairfax
Road Heathfield Ind Estate
Newton Abbot
Devon TQ12 6UD UK