

INSTALL YOUR LARSON EASYHANG[®] STORM DOOR LIKE A *pro*

with this

How-To Guide





adding a storm door

to your home has many benefits. Storm doors provide a second layer of protection from weather, increase energy efficiency, enhance your curb appeal and allow light to pour into an otherwise dark entrance.

The Tools

If you're considering tackling the installation of a storm door yourself, this e-book will guide you through the entire process, step by step. Our patented EasyHang® System makes installation a breeze, even for a new homeowner. No cutting or pre-drilling of the mounting rails is required, and bottom extenders ensure an exact fit. It can all be done in about an hour. Let's get started.



learnwith LARSON

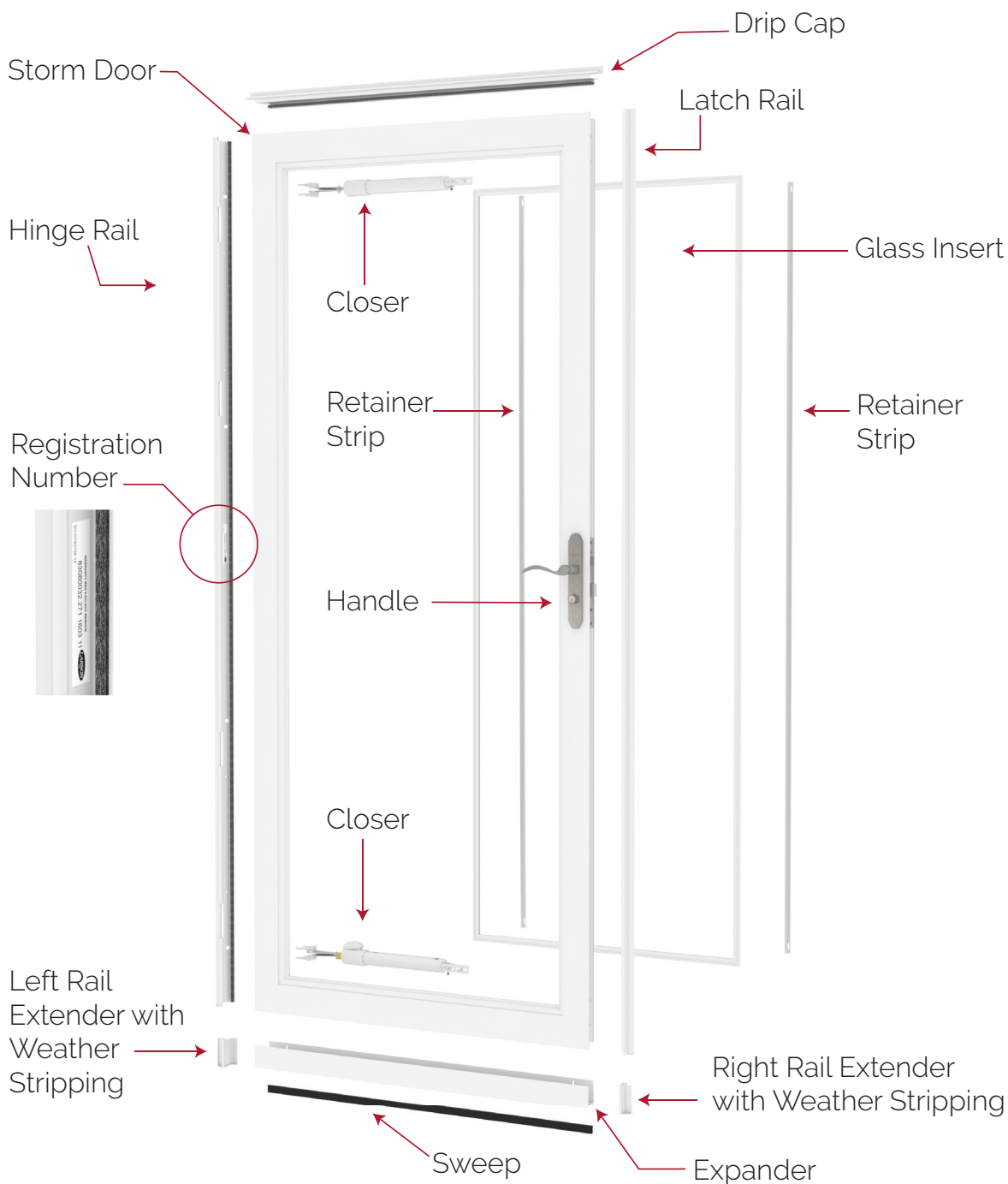
How to Install EasyHang Storm Doors

Once your tools are handy, unpack your storm door and all of its parts. The package contains the storm door itself, 1 hinge rail, 1 latch rail, 1 door expander, 1 door sweep, 1 drip cap and 2 rail extenders. Certain models also include handles and closers.

Understanding the purpose of each part will make for an easier installation. The storm door will be surrounded by the four main pieces of trim: hinge rail, latch rail, drip cap and door expander. The hinge rail will be installed on the hinged side of the storm door, and the latch rail will be installed on the opposite side, where the door opens and latches shut. The drip cap rests at the top to deflect rain,

and the door expander attaches to the bottom. The door expander can be lowered for a precise fit. One rail extender is added to the bottom of the hinge rail and the other is added to the bottom of the latch rail, which allows the rails to be adjusted to the exact length of your door frame.

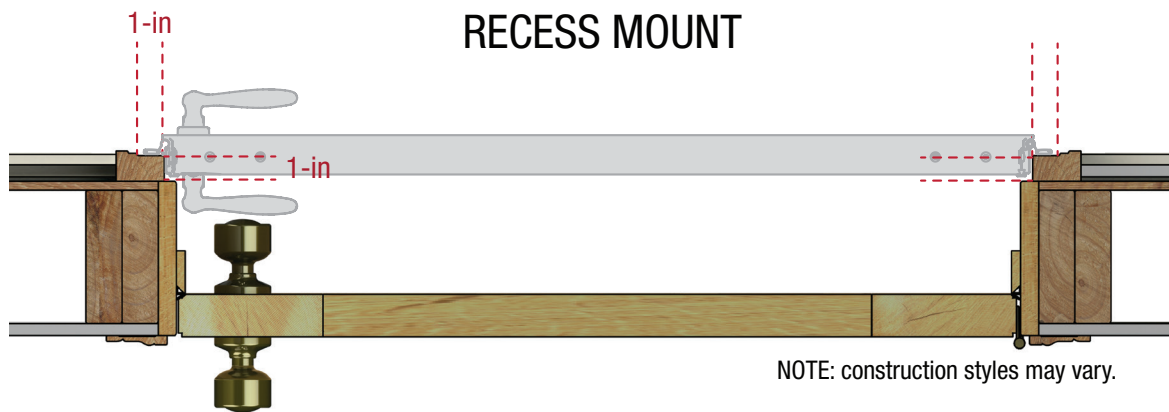
*This guide illustrates how to hang a left hinged storm door.



Before beginning, determine whether the door will be hinged on the left or the right side of the door. Most LARSON doors can be hinged on either side. Hinges can go on the same side as the entry door however it can vary more based on how one walks up to the opening and the layout of the entrance. Typically, the hinges will go on the same side as the hinges of your existing prime door. If your existing door handle obstructs the operation of the storm door, you can switch the hinged side to avoid interference on select models. This guide illustrates how to hang a left hinged storm door.

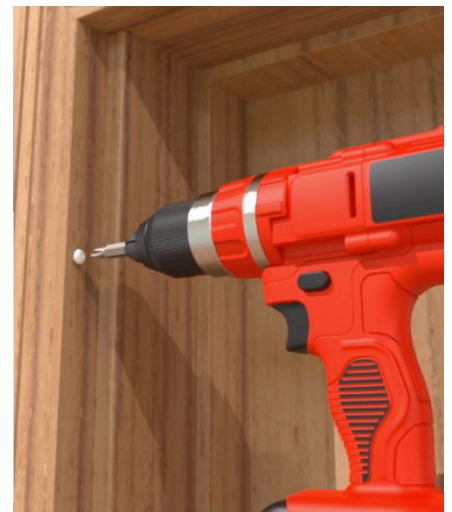
Set Placeholder Screw for Hinge Rail

To begin the installation, set the placeholder screw for the hinge rail. To do so, grab the hinge rail and place it firmly against the left side of the outer edge of the door frame in the mounting space formed by the brick mold trim and the door jamb. Slide the hinge rail all the way to the top. Then find the very top hole on the hinge rail and mark it with your pencil.



Place the rail to the side and drill a pilot hole then screw in a placeholder screw. Do not tighten the screw all the way. Leave a 1/8 inch space exposed between the head of the

screw and the door jamb. You will be sliding the hinge rail back onto this screw later in the process.



Attach Hinge Rail to Storm Door

Next, the hinge rail needs to be attached to the storm door. Place the storm door interior side up on a flat surface. Near the top of the edge of the door you'll find a "locator" hole. Grab the hinge rail and align the top hole on the top hinge leaf with the locator hole on the door. Insert a hinge screw. (The hinge rail will overlap the top of the door slightly.)

Then drill pilot holes for the remaining holes on the hinges. Typical LARSON storm doors have 4 hinges, with 2 holes/screws each. Insert the rest of the hinge screws from the bottom up.

Locator Hole



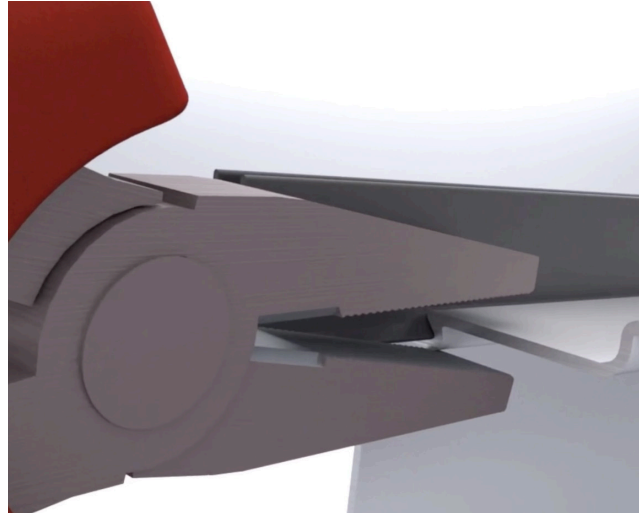
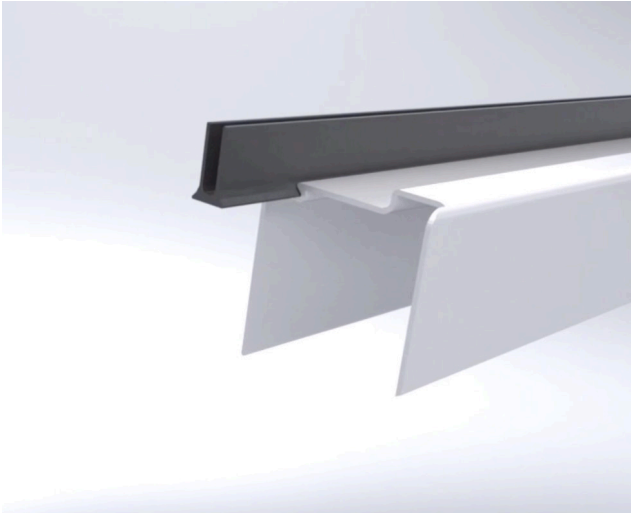
Insert Hinge Screws



Install Door Extender and Sweep

First, attach the sweep to the bottom of the door extender. Slide the sweep into the channel on the bottom of the door extender. Soapy water will help with this process if you're finding it tough to slide on. Once it's on, crimp the ends with your pliers and then trim any excess sweep.

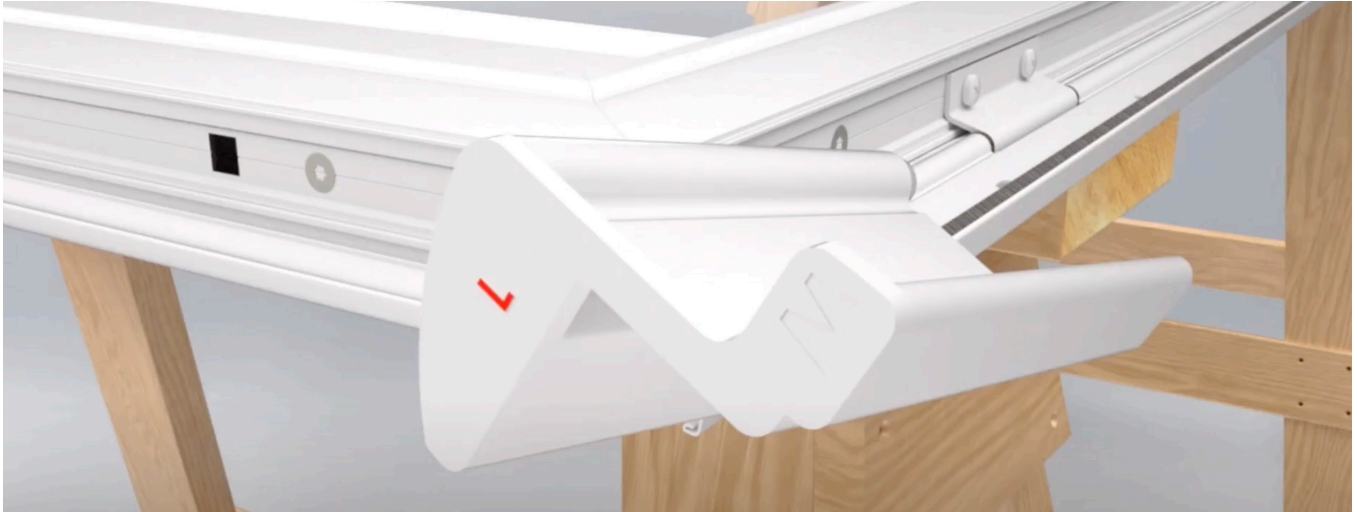
Then slide the door extender onto the bottom of the door. Do NOT screw the door extender in place just yet. After the door is hung you will adjust the door extender before securing it with screws.



Attach Storm Door to Door Frame

Before hanging the storm door on the door frame, the rail extender for the hinge rail needs to be attached. There are two rail extenders, one labeled R and one labeled L. Slide the extender labeled L onto the bottom of the hinge rail.

To hang the door, slide the top hole on the hinge rail onto the placeholder screw you installed in the door frame previously. With the hinge rail in place, hold it firmly against the door opening and tighten the placeholder screw.



Next, pre-drill and insert the very bottom screw on the hinge rail. At the second hinge from the bottom, pre-drill a hole and install a door installation screw in one of the pre-punched holes.



Then slide the rail extender down until it reaches the bottom sill for a perfect fit. Loosen the bottom screw if necessary.

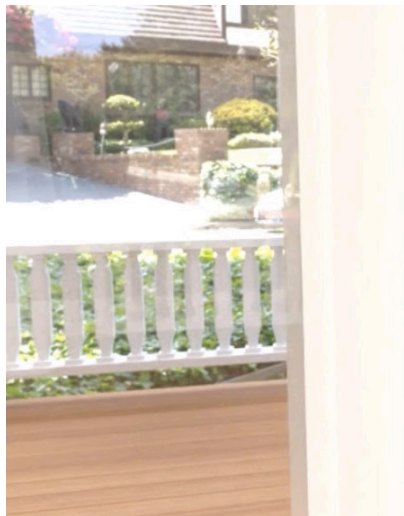


Cut the weatherstrip to fit the rail extender. Then peel the backing off and stick the weatherstrip onto the extender.

Drill pilot holes for the remaining hinge rail screws.



Starting at the bottom, install provided screws in the remaining six to eight locations.



Once the rest of the hinge rail screws are inserted, close the storm door. Push the storm door tight against the door frame and drill pilot holes through the outer side of the hinge rail. Then insert the screws.



Install Drip Cap

Place the drip cap on the door frame above the door, lining up the end of the drip cap with the edge of the hinge rail.

Close the door before securing to ensure there is consistent clearance. Make any necessary adjustments.



Then pre-drill and attach the screws, starting with the screw closest to the hinge rail. Caulk around the top and outer edges of the drip cap if desired.



Install the Latch Rail

Before attaching the latch rail to your opening, slide the extender labeled R on the bottom end of the latch rail. Slide the top end of the latch rail against the bottom of the drip cap in the opening. The latch rail needs to also line up with the outer edge of the drip cap.

Close the door and make sure it doesn't hit or rub against the latch rail. Once you have everything positioned, pre-drill and attach the screws. Start at the top and work your way to the bottom. Check to make sure the door still closes freely.



Slide the rail extender down to meet the door sill.

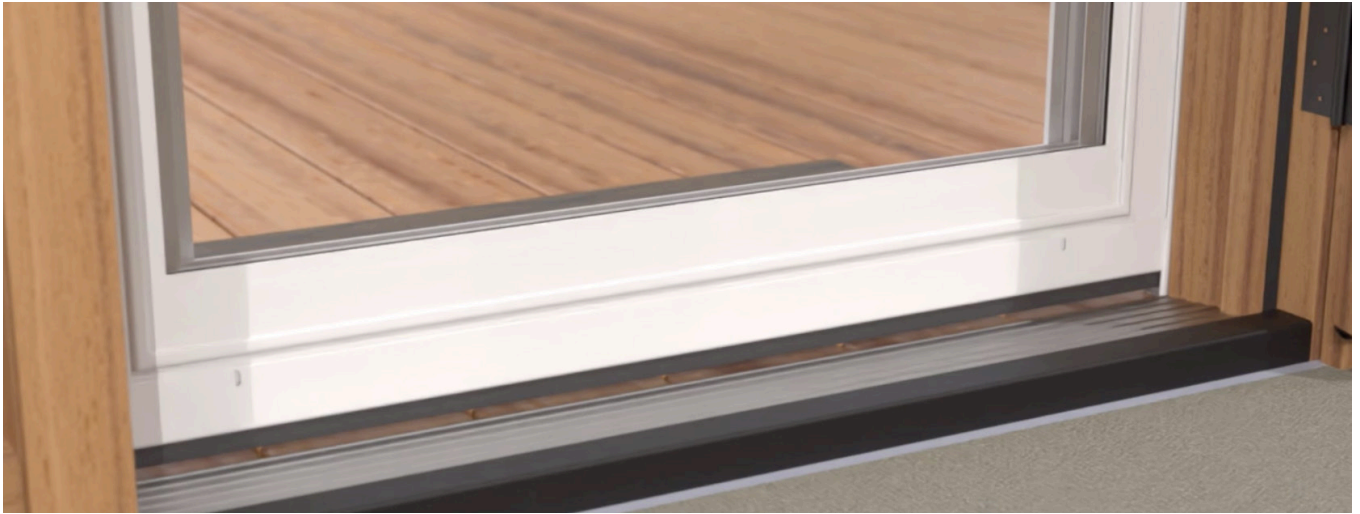


Cut the weatherstrip to fit the rail extender. Then peel the backing and stick to the extender. Close the storm door and check for alignment and overall door operation. Make any necessary adjustments and then secure the latch rail by pre-drilling and inserting all latch rail screws.



Now that the door is installed, it is time to secure the expander. Slide the expander down until the sweep

reaches the bottom of your opening.



From the inside of the door, drill pilot holes. Be sure not to drill all the way through to the other side of the door. Insert screws.

Handle and closer installation varies by model. Follow the directions in the handle and closer kit. LARSON also provides a video tutorial for installation. For more how-to videos on LARSON products, check out our video gallery.

LARSON YouTube Page





FIND A LARSON DEALER NEAR YOU

Subscribe to the LARSON blog

For additional tips on installing a storm door, watch our how-to video.

connect WITH US

